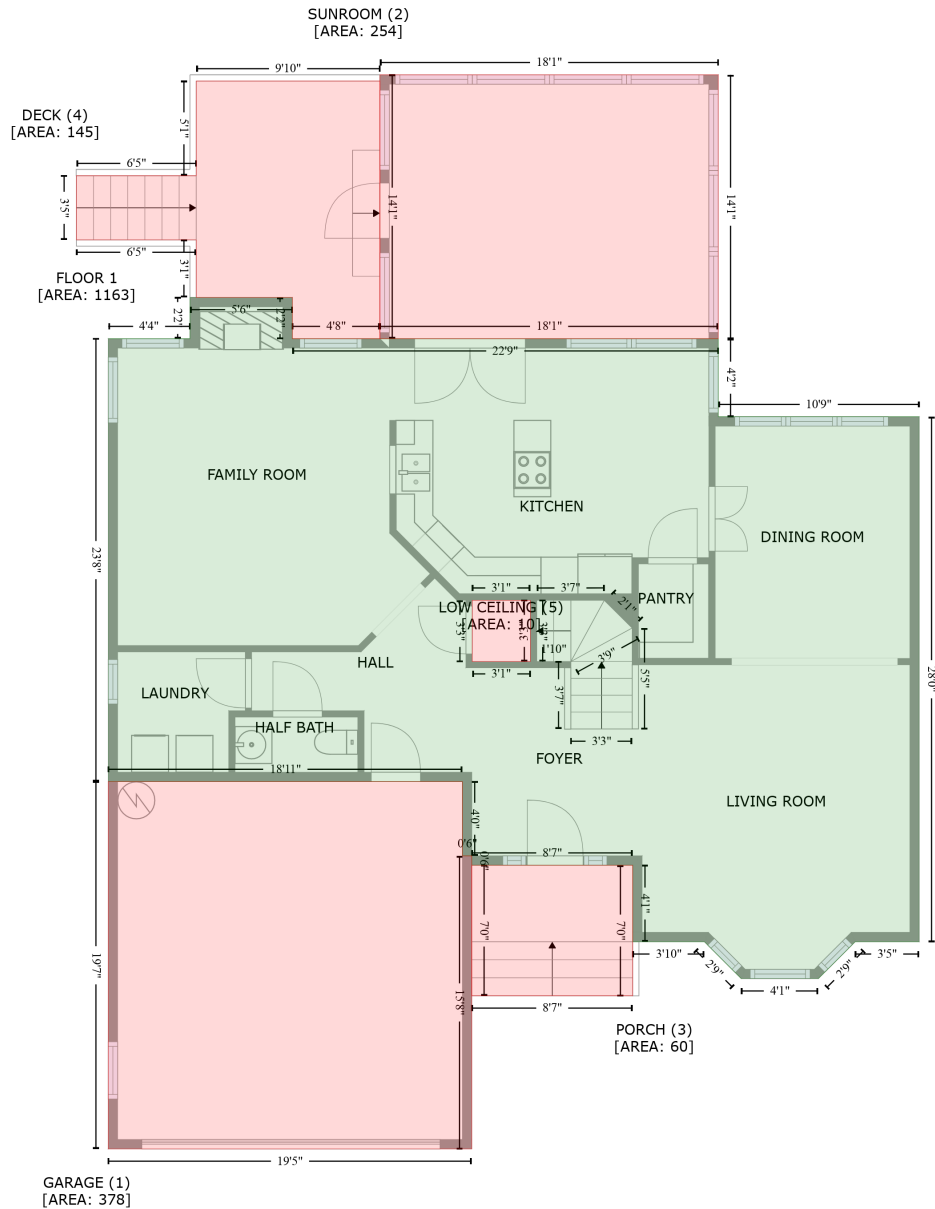


# 212 Red Field Street, Cary, Wake County, North Carolina, United States, 27513

Gross Living Area: 2392 sq. ft



Space	Area (sq. ft)	Calculation <small>Coordinate Polygon Area Algorithm using inches</small>
FLOOR 1 (Living area)	1163	$  \begin{aligned}  & -((145.8 + 145.8) * (224.7 - 251.1) + (145.8 + 418.6) * (251.1 - 251.1) + (418.6 + 418.6) * (251.1 - 301.1) \\  & + (418.6 + 547.3) * (301.1 - 301.1) + (547.3 + 547.3) * (301.1 - 637.2) + (547.3 + 506.3) * (637.2 - 637.2) \\  & + (506.3 + 482.6) * (637.2 - 660.8) + (482.6 + 433.4) * (660.8 - 660.8) + (433.4 + 409.7) * (660.8 - 637.2) \\  & + (409.7 + 363.8) * (637.2 - 637.2) + (363.8 + 363.8) * (637.2 - 588.2) + (363.8 + 260.7) * (588.2 - 588.2) \\  & + (260.7 + 260.7) * (588.2 - 582.2) + (260.7 + 254.7) * (582.2 - 582.2) + (254.7 + 254.7) * (582.2 - 534.6) \\  & + (254.7 + 27.9) * (534.6 - 534.6) + (27.9 + 27.9) * (534.6 - 251.1) + (27.9 + 80.2) * (251.1 - 251.1) \\  & + (80.2 + 80.2) * (251.1 - 224.7) + (80.2 + 145.8)  \end{aligned}  $

# 212 Red Field Street, Cary, Wake County, North Carolina, United States, 27513

Gross Living Area: 2392 sq. ft

Space	Area (sq. ft)	Calculation <small>Coordinate Polygon Area Algorithm using inches</small>
GARAGE (Non-living area)	378	$*(224.7 - 224.7) * 0.5 * 0.00694 + -((298.2 + 261) * (418.6 - 418.6) + (261 + 261) * (418.6 - 457.8) + (261 + 298.2) * (457.8 - 457.8) + (298.2 + 298.2) * (457.8 - 418.6)) * 0.5 * 0.00694$
SUNROOM (Non-living area)	254	$-((254.7 + 254.7) * (534.6 - 582.2) + (254.7 + 260.7) * (582.2 - 582.2) + (260.7 + 260.7) * (582.2 - 769.8) + (260.7 + 27.9) * (769.8 - 769.8) + (27.9 + 27.9) * (769.8 - 534.6) + (27.9 + 254.7) * (534.6 - 534.6)) * 0.5 * 0.00694$
PORCH (Non-living area)	60	$-((418.6 + 418.6) * (82.2 - 251.1) + (418.6 + 201.9) * (251.1 - 251.1) + (201.9 + 201.9) * (251.1 - 82.2) + (201.9 + 418.6) * (82.2 - 82.2)) * 0.5 * 0.00694$
DECK (Non-living area)	145	$-((363.8 + 363.8) * (588.2 - 671.8) + (363.8 + 260.7) * (671.8 - 671.8) + (260.7 + 260.7) * (671.8 - 588.2) + (260.7 + 363.8) * (588.2 - 588.2)) * 0.5 * 0.00694$
LOW CEILING (Non-living area)	10	$-((201.9 + 201.9) * (86.2 - 251.1) + (201.9 + 145.8) * (251.1 - 251.1) + (145.8 + 145.8) * (251.1 - 224.7) + (145.8 + 84.2) * (224.7 - 224.7) + (84.2 + 84.2) * (224.7 - 187.9) + (84.2 + 7.5) * (187.9 - 187.9) + (7.5 + 7.5) * (187.9 - 146.8) + (7.5 + 84.2) * (146.8 - 146.8) + (84.2 + 84.2) * (146.8 - 86.2) + (84.2 + 201.9) * (86.2 - 86.2)) * 0.5 * 0.00694$



# 212 Red Field Street, Cary, Wake County, North Carolina, United States, 27513

Gross Living Area: 2392 sq. ft

Space	Area (sq. ft)	Calculation <small>Coordinate Polygon Area Algorithm using inches</small>
OPEN TO BELOW (Non-living area)	38	$\begin{aligned} & * (370.4 - 370.4) + (198.3 + 198.3) * (370.4 - 333.4) + (198.3 + 253.1) * (333.4 - 333.4) + (253.1 + \\ & 253.1) * (333.4 - 251.1) + (253.1 + 386.7) * (251.1 - 251.1) * 0.5 * 0.00694 \\ & -((365.8 + 365.8) * (536.6 - 582.2) + (365.8 + 363.8) * (582.2 - 588.2) + (363.8 + 260.7) * (588.2 - \\ & 588.2) + (260.7 + 260.7) * (588.2 - 582.2) + (260.7 + 258.7) * (582.2 - 582.2) + (258.7 + 258.7) * \\ & (582.2 - 536.6) + (258.7 + 365.8) * (536.6 - 536.6)) * 0.5 * 0.00694 \end{aligned}$