



Home report


6115 St Ives Court, Sugar Loaf Hills, Cave Spring, Roanoke,
Roanoke County, Virginia, United States, 24018




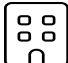
Property summary


**1** Garages


**4** Bedrooms

**3** Bathrooms

**1** Half baths

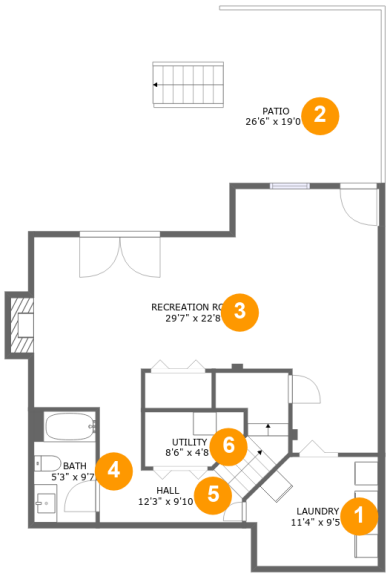
**3** Floors

**2,813** Gross living area sqft

**3,874** Total sqft

Home report

6115 St Ives Court, Sugar Loaf Hills, Cave Spring, Roanoke,
Roanoke County, Virginia, United States, 24018



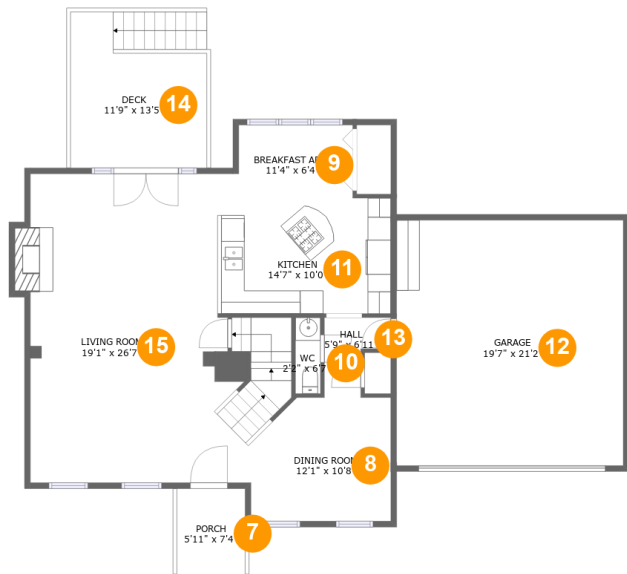
Room dimensions

Floor 1 Total sqft: 1256 Living area: 846

#		Max Dimensions	sqft	Included
1	Laundry	11'4" x 9'5"	96 sq. ft	Yes
2	Patio	26'6" x 19'0"	362 sq. ft	No
3	Recreation Room	29'7" x 22'8"	479 sq. ft	Yes
4	Bath	5'3" x 9'7"	51 sq. ft	Yes
5	Hall	12'3" x 9'10"	98 sq. ft	Yes
6	Utility	8'6" x 4'8"	36 sq. ft	No

Home report

6115 St Ives Court, Sugar Loaf Hills, Cave Spring, Roanoke,
Roanoke County, Virginia, United States, 24018



Room dimensions

Floor 2 Total sqft: 1641 Living area: 990

#		Max Dimensions	sqft	Included
7	Porch	5'11" x 7'4"	43 sq. ft	No
8	Dining Room	12'1" x 10'8"	121 sq. ft	Yes
9	Breakfast Area	11'4" x 6'4"	65 sq. ft	Yes
10	WC	2'2" x 6'7"	14 sq. ft	Yes
11	Kitchen	14'7" x 10'0"	148 sq. ft	Yes
12	Garage	19'7" x 21'2"	414 sq. ft	No
13	Hall	5'9" x 6'11"	29 sq. ft	Yes
14	Deck	11'9" x 13'5"	155 sq. ft	No
15	Living Room	19'1" x 26'7"	502 sq. ft	Yes

6115 St Ives Court, Sugar Loaf Hills, Cave Spring, Roanoke,
Roanoke County, Virginia, United States, 24018



Room dimensions

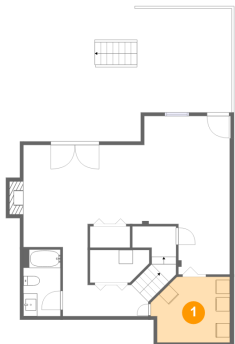
Floor 3

Total sqft: 977 Living area: 977

#		Max Dimensions	sqft	Included
16	W.I.C.	6'5" x 10'11"	62 sq. ft	Yes
17	Primary Bath	8'2" x 11'10"	96 sq. ft	Yes
18	Bedroom	9'9" x 11'10"	104 sq. ft	Yes
19	Primary Bedroom	11'11" x 15'11"	190 sq. ft	Yes
20	Bedroom	12'1" x 12'10"	125 sq. ft	Yes
21	Bath	5'1" x 7'10"	39 sq. ft	Yes
22	Hall	13'6" x 7'10"	111 sq. ft	Yes
23	Bedroom	9'10" x 10'1"	99 sq. ft	Yes

6115 St Ives Court, Sugar Loaf Hills, Cave Spring, Roanoke,
Roanoke County, Virginia, United States, 24018

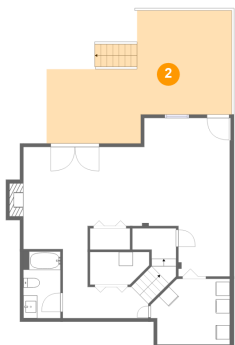
1 Floor 1 - Laundry



Max Dimensions: 11'4" x 9'5"
Calculated Area: 96 sq. ft
Included: Yes

Heated: Yes
Finished: Yes
Enclosed: Yes
Contiguous: Yes
Permitted: Yes
Wet space: No
Addition: No
Conversion: No

2 Floor 1 - Patio

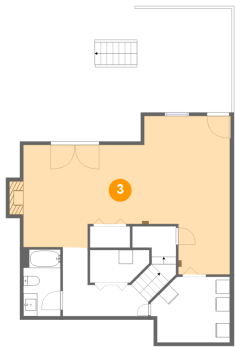


Max Dimensions: 26'6" x 19'0"
Calculated Area: 362 sq. ft
Included: No

Heated: No
Finished: Yes
Enclosed: No
Contiguous: Yes
Permitted: Yes
Wet space: No
Addition: No
Conversion: No

6115 St Ives Court, Sugar Loaf Hills, Cave Spring, Roanoke,
Roanoke County, Virginia, United States, 24018

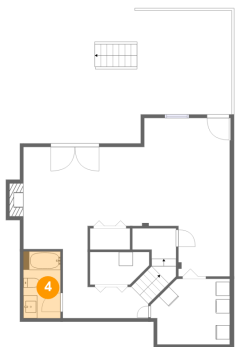
3 Floor 1 - Recreation Room



Max Dimensions: 29'7" x 22'8"
Calculated Area: 479 sq. ft
Included: Yes

Heated: Yes
Finished: Yes
Enclosed: Yes
Contiguous: Yes
Permitted: Yes
Wet space: No
Addition: No
Conversion: No

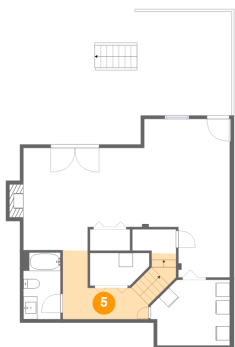
4 Floor 1 - Bath



Max Dimensions: 5'3" x 9'7"
Calculated Area: 51 sq. ft
Included: Yes

Heated: Yes
Finished: Yes
Enclosed: Yes
Contiguous: Yes
Permitted: Yes
Wet space: Yes
Addition: No
Conversion: No

5 Floor 1 - Hall

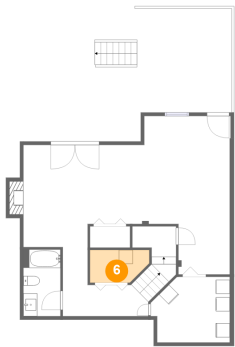


Max Dimensions: 12'3" x 9'10"
Calculated Area: 98 sq. ft
Included: Yes

Heated: Yes
Finished: Yes
Enclosed: Yes
Contiguous: Yes
Permitted: Yes
Wet space: No
Addition: No
Conversion: No

6115 St Ives Court, Sugar Loaf Hills, Cave Spring, Roanoke,
Roanoke County, Virginia, United States, 24018

6 Floor 1 - Utility



Max Dimensions: 8'6" x 4'8"
Calculated Area: 36 sq. ft
Included: No

Heated: Yes
Finished: No
Enclosed: Yes
Contiguous: Yes
Permitted: Yes
Wet space: No
Addition: No
Conversion: No

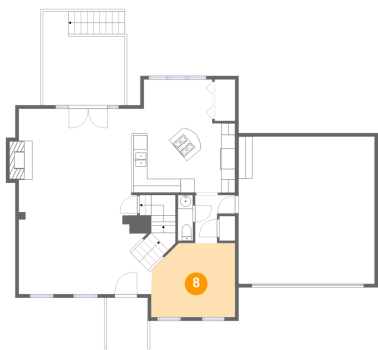
7 Floor 2 - Porch



Max Dimensions: 5'11" x 7'4"
Calculated Area: 43 sq. ft
Included: No

Heated: No
Finished: Yes
Enclosed: No
Contiguous: Yes
Permitted: Yes
Wet space: No
Addition: No
Conversion: No

8 Floor 2 - Dining Room

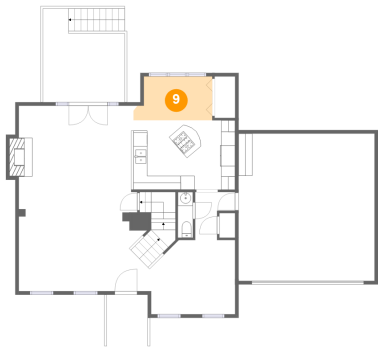


Max Dimensions: 12'1" x 10'8"
Calculated Area: 121 sq. ft
Included: Yes

Heated: Yes
Finished: Yes
Enclosed: Yes
Contiguous: Yes
Permitted: Yes
Wet space: No
Addition: No
Conversion: No

6115 St Ives Court, Sugar Loaf Hills, Cave Spring, Roanoke,
Roanoke County, Virginia, United States, 24018

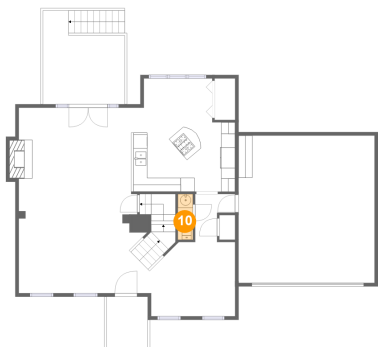
9 Floor 2 - Breakfast Area



Max Dimensions: 11'4" x 6'4"
Calculated Area: 65 sq. ft
Included: Yes

Heated: Yes
Finished: Yes
Enclosed: Yes
Contiguous: Yes
Permitted: Yes
Wet space: No
Addition: No
Conversion: No

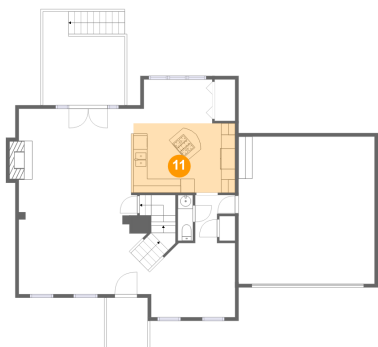
10 Floor 2 - WC



Max Dimensions: 2'2" x 6'7"
Calculated Area: 14 sq. ft
Included: Yes

Heated: Yes
Finished: Yes
Enclosed: Yes
Contiguous: Yes
Permitted: Yes
Wet space: Yes
Addition: No
Conversion: No

11 Floor 2 - Kitchen



Max Dimensions: 14'7" x 10'0"
Calculated Area: 148 sq. ft
Included: Yes

Heated: Yes
Finished: Yes
Enclosed: Yes
Contiguous: Yes
Permitted: Yes
Wet space: No
Addition: No
Conversion: No

6115 St Ives Court, Sugar Loaf Hills, Cave Spring, Roanoke,
Roanoke County, Virginia, United States, 24018

12 Floor 2 - Garage



Max Dimensions: 19'7" x 21'2"
Calculated Area: 414 sq. ft
Included: No

Heated: No
Finished: No
Enclosed: Yes
Contiguous: Yes
Permitted: Yes
Wet space: No
Addition: No
Conversion: No

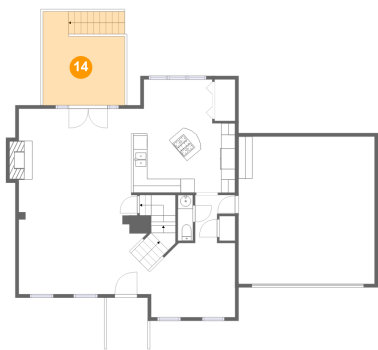
13 Floor 2 - Hall



Max Dimensions: 5'9" x 6'11"
Calculated Area: 29 sq. ft
Included: Yes

Heated: Yes
Finished: Yes
Enclosed: Yes
Contiguous: Yes
Permitted: Yes
Wet space: No
Addition: No
Conversion: No

14 Floor 2 - Deck

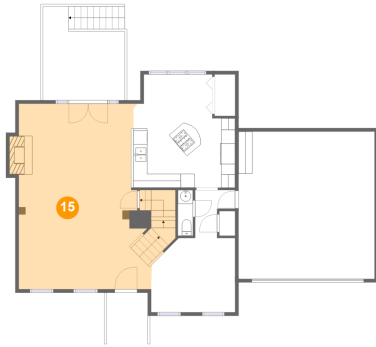


Max Dimensions: 11'9" x 13'5"
Calculated Area: 155 sq. ft
Included: No

Heated: No
Finished: Yes
Enclosed: No
Contiguous: Yes
Permitted: Yes
Wet space: No
Addition: No
Conversion: No

6115 St Ives Court, Sugar Loaf Hills, Cave Spring, Roanoke,
Roanoke County, Virginia, United States, 24018

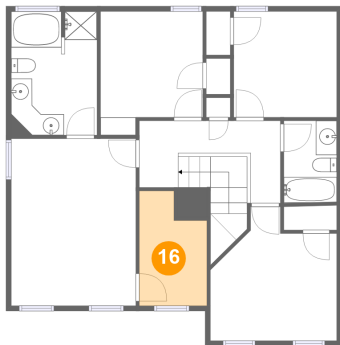
15 Floor 2 - Living Room



Max Dimensions: 19'1" x 26'7"
Calculated Area: 502 sq. ft
Included: Yes

Heated: Yes
Finished: Yes
Enclosed: Yes
Contiguous: Yes
Permitted: Yes
Wet space: No
Addition: No
Conversion: No

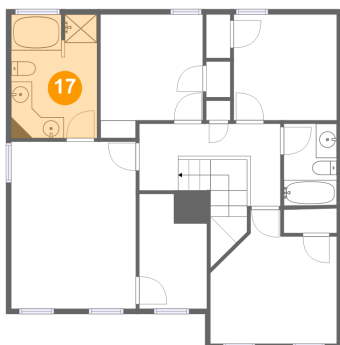
16 Floor 3 - W.I.C.



Max Dimensions: 6'5" x 10'11"
Calculated Area: 62 sq. ft
Included: Yes

Heated: Yes
Finished: Yes
Enclosed: Yes
Contiguous: Yes
Permitted: Yes
Wet space: No
Addition: No
Conversion: No

17 Floor 3 - Primary Bath

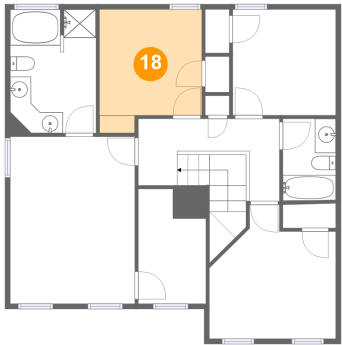


Max Dimensions: 8'2" x 11'10"
Calculated Area: 96 sq. ft
Included: Yes

Heated: Yes
Finished: Yes
Enclosed: Yes
Contiguous: Yes
Permitted: Yes
Wet space: Yes
Addition: No
Conversion: No

6115 St Ives Court, Sugar Loaf Hills, Cave Spring, Roanoke,
Roanoke County, Virginia, United States, 24018

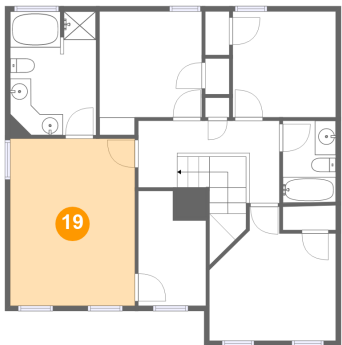
18 Floor 3 - Bedroom



Max Dimensions: 9'9" x 11'10"
Calculated Area: 104 sq. ft
Included: Yes

Heated: Yes
Finished: Yes
Enclosed: Yes
Contiguous: Yes
Permitted: Yes
Wet space: No
Addition: No
Conversion: No

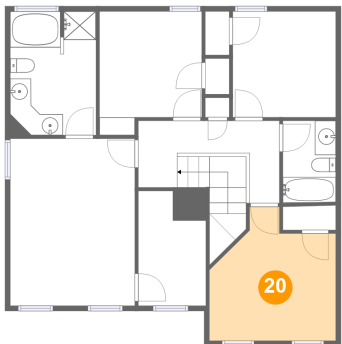
19 Floor 3 - Primary Bedroom



Max Dimensions: 11'11" x 15'11"
Calculated Area: 190 sq. ft
Included: Yes

Heated: Yes
Finished: Yes
Enclosed: Yes
Contiguous: Yes
Permitted: Yes
Wet space: No
Addition: No
Conversion: No

20 Floor 3 - Bedroom

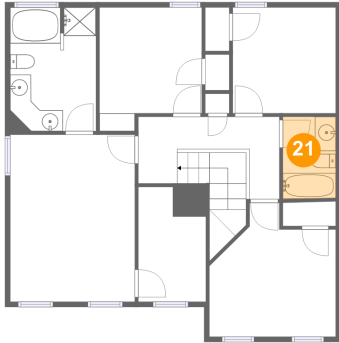


Max Dimensions: 12'1" x 12'10"
Calculated Area: 125 sq. ft
Included: Yes

Heated: Yes
Finished: Yes
Enclosed: Yes
Contiguous: Yes
Permitted: Yes
Wet space: No
Addition: No
Conversion: No

6115 St Ives Court, Sugar Loaf Hills, Cave Spring, Roanoke,
Roanoke County, Virginia, United States, 24018

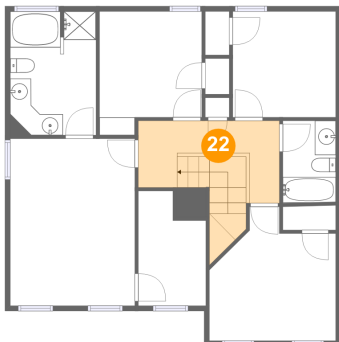
21 Floor 3 - Bath



Max Dimensions: 5'1" x 7'10"
Calculated Area: 39 sq. ft
Included: Yes

Heated: Yes
Finished: Yes
Enclosed: Yes
Contiguous: Yes
Permitted: Yes
Wet space: Yes
Addition: No
Conversion: No

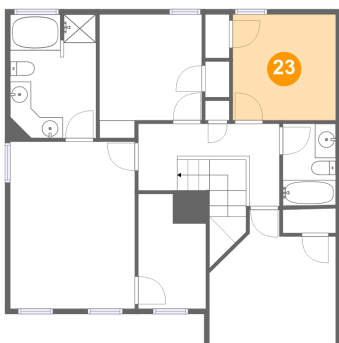
22 Floor 3 - Hall



Max Dimensions: 13'6" x 7'10"
Calculated Area: 111 sq. ft
Included: Yes

Heated: Yes
Finished: Yes
Enclosed: Yes
Contiguous: Yes
Permitted: Yes
Wet space: No
Addition: No
Conversion: No

23 Floor 3 - Bedroom



Max Dimensions: 9'10" x 10'1"
Calculated Area: 99 sq. ft
Included: Yes

Heated: Yes
Finished: Yes
Enclosed: Yes
Contiguous: Yes
Permitted: Yes
Wet space: No
Addition: No
Conversion: No