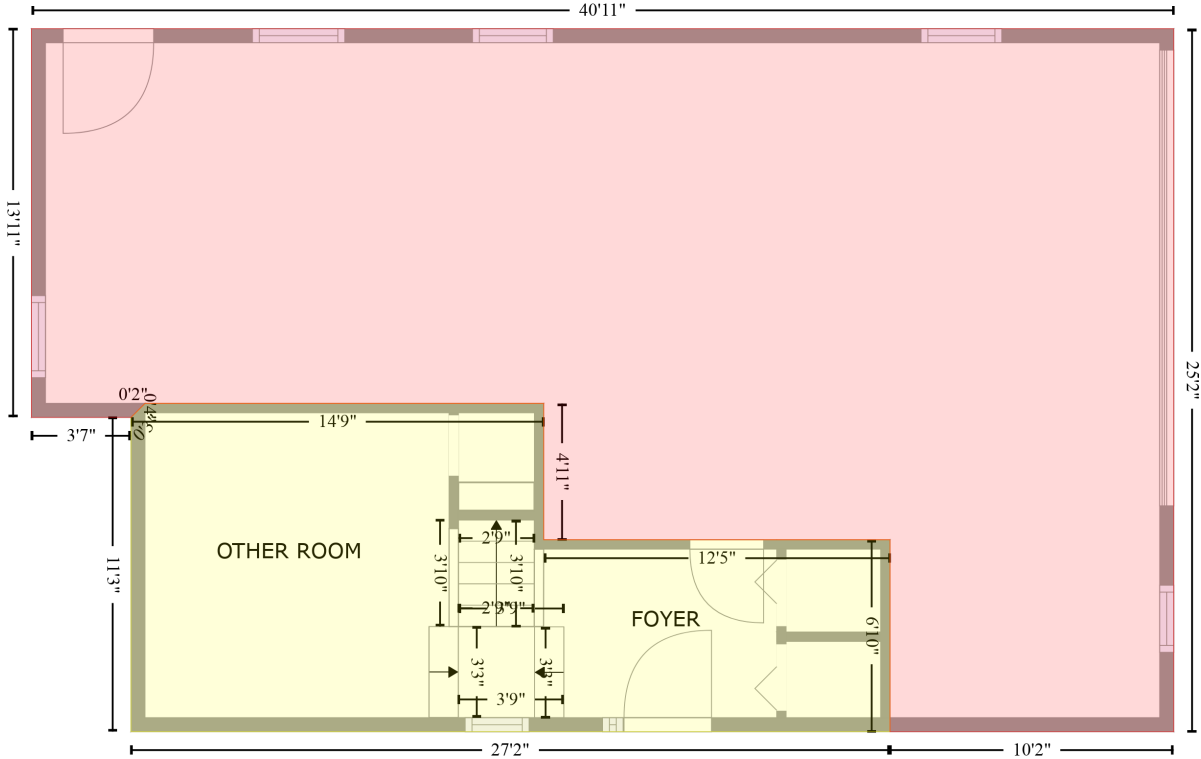


# 1612 1st Street, Indian Rocks Beach, Pinellas County, Florida, United States, 33785

Gross Living Area: 2115 sq. ft

GARAGE (1)  
[AREA: 729]



Below Ground  
[AREA: 258]

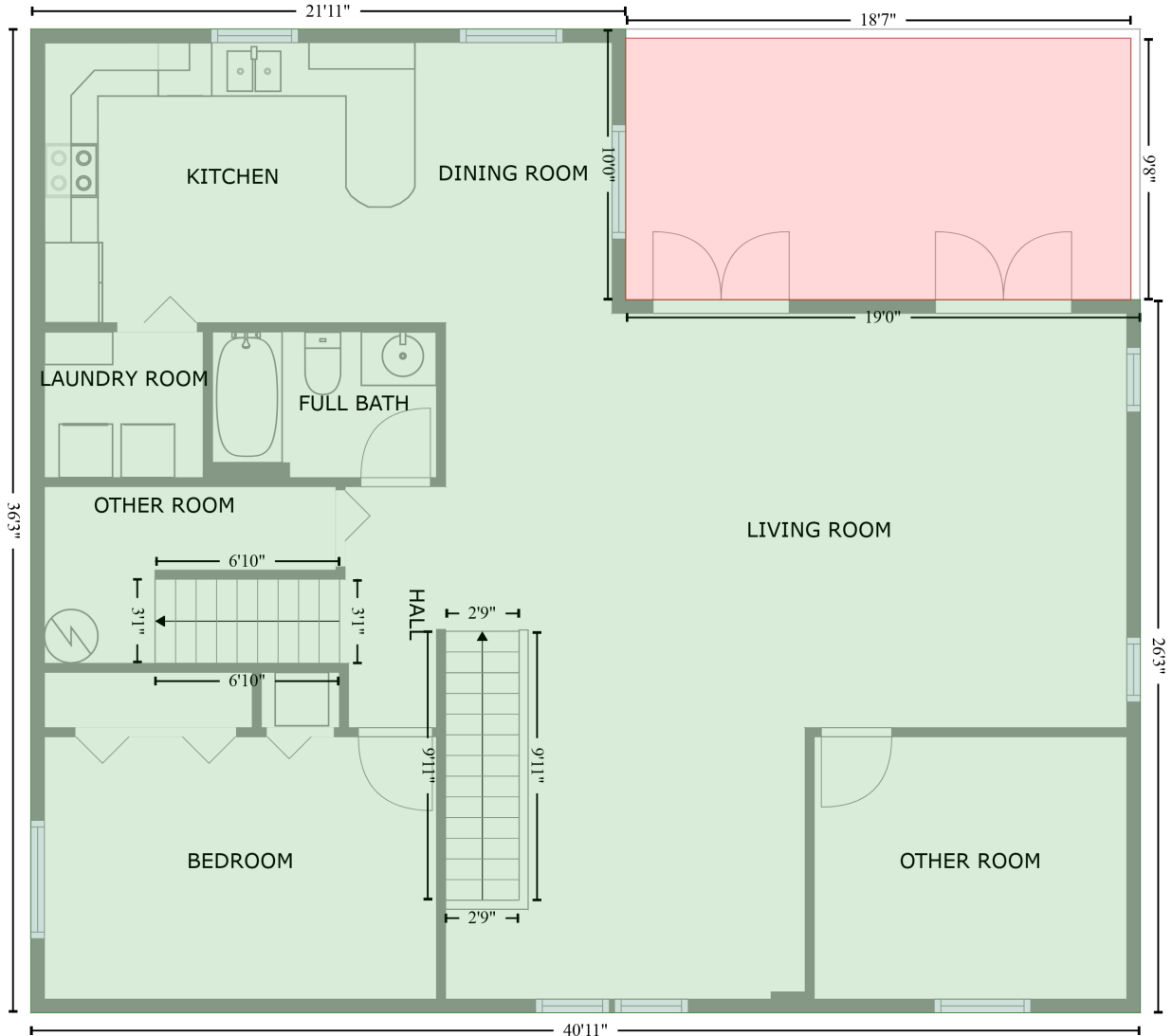
Space	Area (sq. ft)	Calculation
Below Ground (Living area)	258	Coordinate Polygon Area Algorithm using inches $-((232.7 + 232.7) * (282.1 - 340.6) + (232.7 + 381.4) * (340.6 - 340.6) + (381.4 + 381.4) * (340.6 - 423) + (381.4 + 55.5) * (423 - 423) + (55.5 + 55.5) * (423 - 288.1) + (55.5 + 61.5) * (288.1 - 282.1) + (61.5 + 232.7) * (282.1 - 282.1)) * 0.5 * 0.00694$
GARAGE (Non-living area)	729	$-((503.2 + 503.2) * (121.3 - 423) + (503.2 + 381.4) * (423 - 423) + (381.4 + 381.4) * (423 - 340.6) + (381.4 + 232.7) * (340.6 - 340.6) + (232.7 + 232.7) * (340.6 - 282.1) + (232.7 + 61.5) * (282.1 - 282.1) + (61.5 + 55.5) * (282.1 - 288.1) + (55.5 + 12.7) * (288.1 - 288.1) + (12.7 + 12.7) * (288.1 - 121.3) + (12.7 + 503.2) * (121.3 - 121.3)) * 0.5 * 0.00694$

# 1612 1st Street, Indian Rocks Beach, Pinellas County, Florida, United States, 33785

Gross Living Area: 2115 sq. ft

FLOOR 2  
[AREA: 1293]

BALCONY (1)  
[AREA: 179]

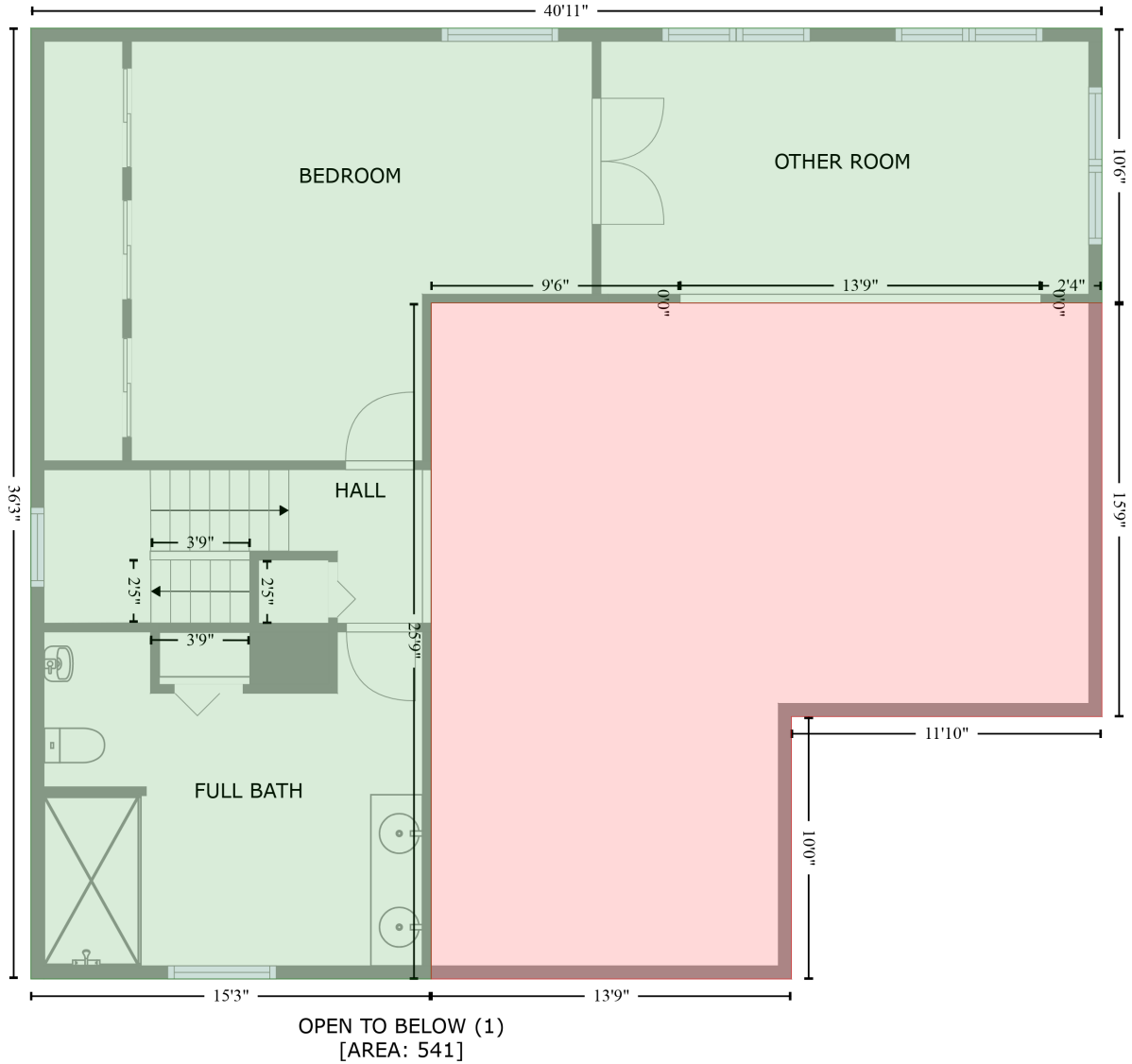


Space	Area (sq. ft)	Calculation <small>Coordinate Polygon Area Algorithm using inches</small>
FLOOR 2 (Living area)	1293	$-((275.7 + 275.7) * (1.5 - 121.3) + (275.7 + 503.2) * (121.3 - 121.3) + (503.2 + 503.2) * (121.3 - 436.7) + (503.2 + 12.7) * (436.7 - 436.7) + (12.7 + 12.7) * (436.7 - 1.5) + (12.7 + 275.7) * (1.5 - 1.5)) * 0.5 * 0.00694$
BALCONY (Non-living area)	179	$-((499 + 499) * (5.5 - 121.3) + (499 + 275.7) * (121.3 - 121.3) + (275.7 + 275.7) * (121.3 - 5.5) + (275.7 + 499) * (5.5 - 5.5)) * 0.5 * 0.00694$

# 1612 1st Street, Indian Rocks Beach, Pinellas County, Florida, United States, 33785

Gross Living Area: 2115 sq. ft

FLOOR 3  
[AREA: 822]



Space	Area (sq. ft)	Calculation <small>Coordinate Polygon Area Algorithm using inches</small>
FLOOR 3 (Living area)	822	$-((12.7 + 503.2) * (1.5 - 1.5) + (503.2 + 503.2) * (1.5 - 127.3) + (503.2 + 475.4) * (127.3 - 127.3) + (475.4 + 475.4) * (127.3 - 127.2) + (475.4 + 310) * (127.2 - 127.2) + (310 + 310) * (127.2 - 127.3) + (310 + 196.1) * (127.3 - 127.3) + (196.1 + 196.1) * (127.3 - 436.7) + (196.1 + 12.7) * (436.7 - 436.7) + (12.7 + 12.7) * (436.7 - 1.5)) * 0.5 * 0.00694$
OPEN TO BELOW (Non-living area)	541	$-((475.4 + 475.4) * (127.2 - 127.3) + (475.4 + 503.2) * (127.3 - 127.3) + (503.2 + 503.2) * (127.3 - 316.6) + (503.2 + 361.1) * (316.6 - 316.6) + (361.1 + 361.1) * (316.6 - 436.7) + (361.1 + 196.1) * (436.7 - 436.7)) * 0.5 * 0.00694$

# 1612 1st Street, Indian Rocks Beach, Pinellas County, Florida, United States, 33785

Gross Living Area: 2115 sq. ft

Space	Area (sq. ft)	Calculation <small>Coordinate Polygon Area Algorithm using inches</small>
		$\begin{aligned} & (436.7 - 436.7) + (196.1 + 196.1) * (436.7 - 127.3) + (196.1 + 310) * (127.3 - 127.3) + (310 + 310) \\ & * (127.3 - 127.2) + (310 + 475.4) * (127.2 - 127.2) * 0.5 * 0.00694 \end{aligned}$