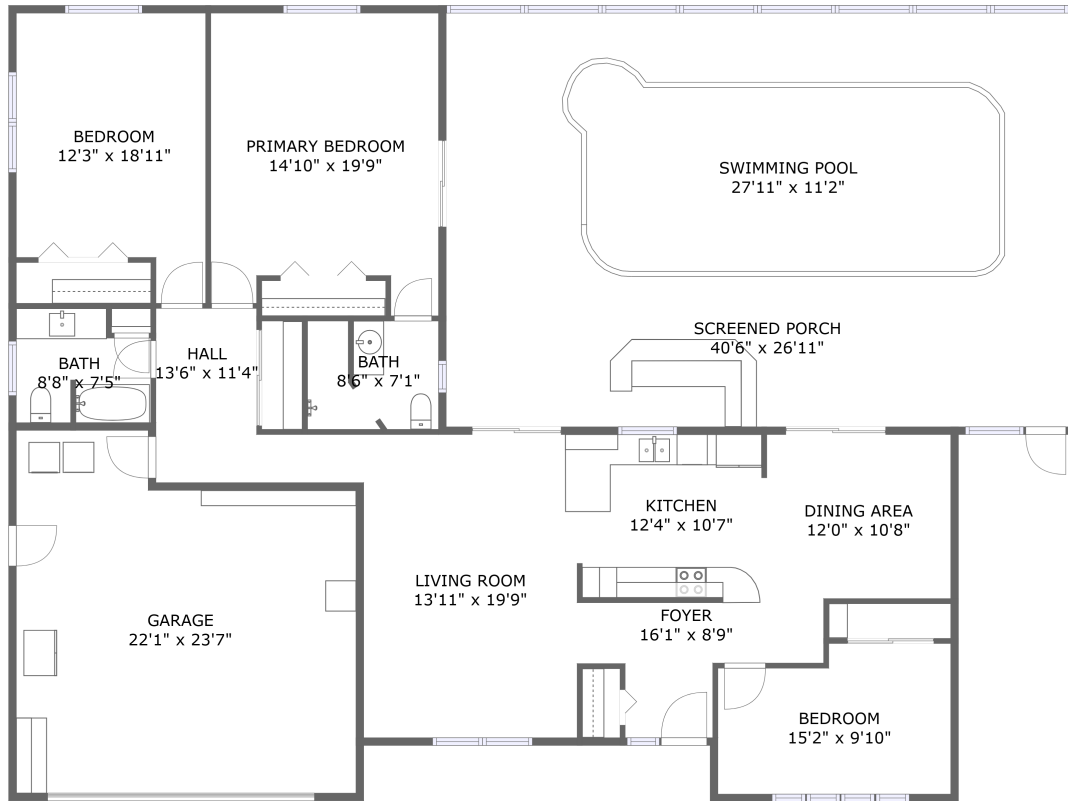



1761 Eaton Drive, Downtown Largo, Clearwater, Pinellas County, Florida, United States, 33756



Property summary


 **1** Garages

 **3** Bedrooms

 **2** Bathrooms

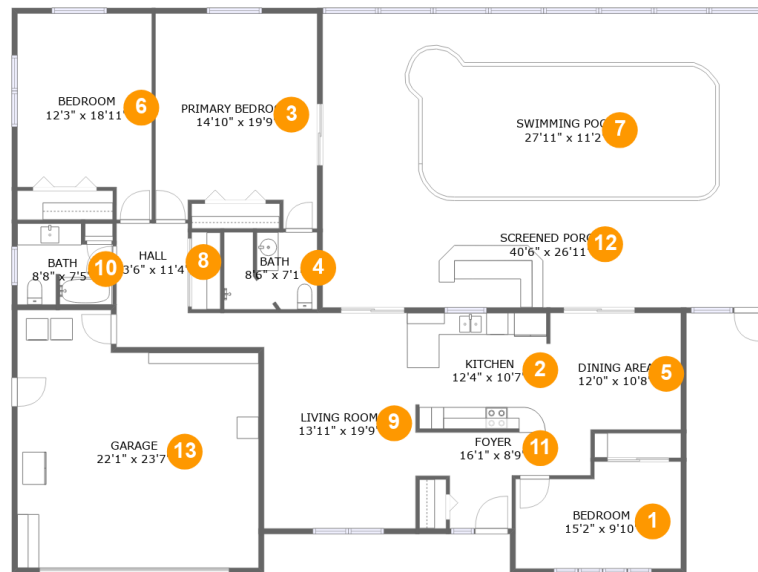
 **0** Half baths

 **1** Floors

 **1,712** Gross living area sqft

 **3,009** Total sqft

1761 Eaton Drive, Downtown Largo, Clearwater, Pinellas County, Florida, United States, 33756



Room dimensions

Floor 1

Total sqft: 3009

Living area: 1712

#		Dimensions	sqft	Counted as living area
1	Bedroom	15'2" x 9'10"	137 sq. ft	Yes
2	Kitchen	12'4" x 10'7"	129 sq. ft	Yes
3	Primary Bedroom	14'10" x 19'9"	267 sq. ft	Yes
4	Bath	8'6" x 7'1"	58 sq. ft	Yes
5	Dining Area	12'0" x 10'8"	128 sq. ft	Yes
6	Bedroom	12'3" x 18'11"	206 sq. ft	Yes
7	Swimming Pool	27'11" x 11'2"	326 sq. ft	No
8	Hall	13'6" x 11'4"	96 sq. ft	Yes
9	Living Room	13'11" x 19'9"	274 sq. ft	Yes
10	Bath	8'8" x 7'5"	58 sq. ft	Yes
11	Foyer	16'1" x 8'9"	93 sq. ft	Yes

Scan captured on Mon, 20 Jan 2025 20:18:37 GMT

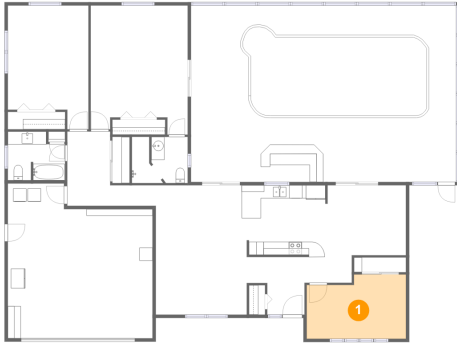
Information is calculated by Cubicasa technology deemed highly reliable but not guaranteed.

**1761 Eaton Drive, Downtown Largo, Clearwater,
Pinellas County, Florida, United States, 33756**

#		Dimensions	sqft	Counted as living area
12	Screened Porch	40'6" x 26'11"	1091 sq. ft	No
13	Garage	22'1" x 23'7"	469 sq. ft	No

1761 Eaton Drive, Downtown Largo, Clearwater, Pinellas County, Florida, United States, 33756

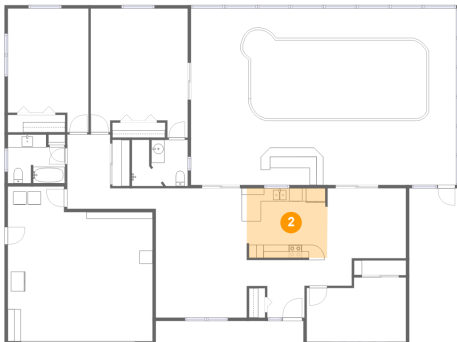
1 Floor 1 - Bedroom



Dimensions: 15'2" x 9'10"
Area: 137 sq. ft
Counted as living area: Yes

Heated: Yes
Finished: Yes
Enclosed: Yes
Contiguous: Yes
Permitted: Yes
Wet space: No
Addition: No
Conversion: No

2 Floor 1 - Kitchen

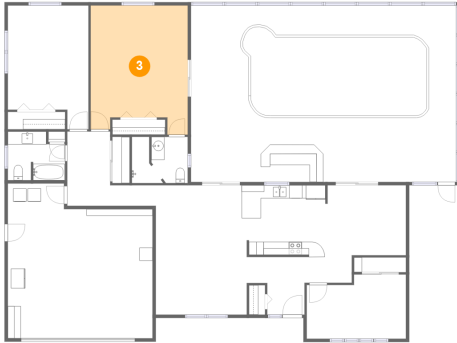


Dimensions: 12'4" x 10'7"
Area: 129 sq. ft
Counted as living area: Yes

Heated: Yes
Finished: Yes
Enclosed: Yes
Contiguous: Yes
Permitted: Yes
Wet space: No
Addition: No
Conversion: No

1761 Eaton Drive, Downtown Largo, Clearwater, Pinellas County, Florida, United States, 33756

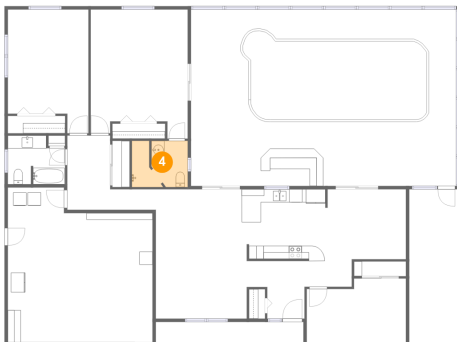
3 Floor 1 - Primary Bedroom



Dimensions: 14'10" x 19'9"
Area: 267 sq. ft
Counted as living area: Yes

Heated: Yes
Finished: Yes
Enclosed: Yes
Contiguous: Yes
Permitted: Yes
Wet space: No
Addition: No
Conversion: No

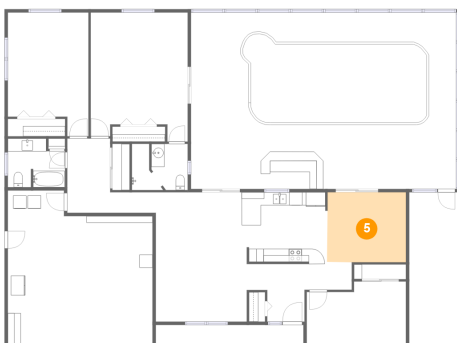
4 Floor 1 - Bath



Dimensions: 8'6" x 7'1"
Area: 58 sq. ft
Counted as living area: Yes

Heated: Yes
Finished: Yes
Enclosed: Yes
Contiguous: Yes
Permitted: Yes
Wet space: Yes
Addition: No
Conversion: No

5 Floor 1 - Dining Area



Dimensions: 12'0" x 10'8"
Area: 128 sq. ft
Counted as living area: Yes

Heated: Yes
Finished: Yes
Enclosed: Yes
Contiguous: Yes
Permitted: Yes
Wet space: No
Addition: No
Conversion: No

1761 Eaton Drive, Downtown Largo, Clearwater, Pinellas County, Florida, United States, 33756

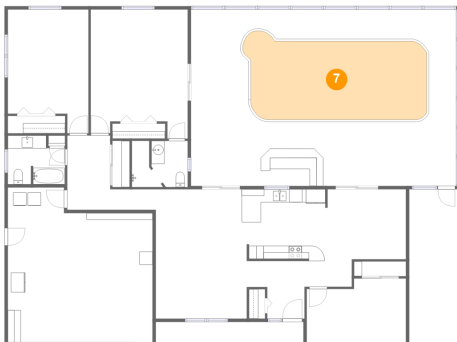
6 Floor 1 - Bedroom



Dimensions: 12'3" x 18'11"
Area: 206 sq. ft
Counted as living area: Yes

Heated: Yes
Finished: Yes
Enclosed: Yes
Contiguous: Yes
Permitted: Yes
Wet space: No
Addition: No
Conversion: No

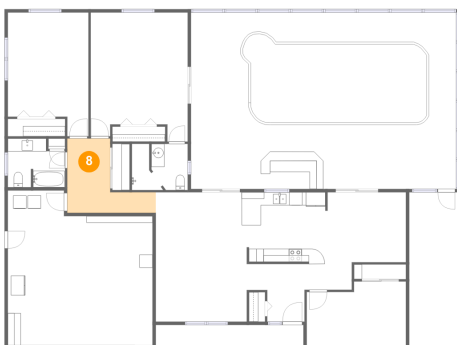
7 Floor 1 - Swimming Pool



Dimensions: 27'11" x 11'2"
Area: 326 sq. ft
Counted as living area: No

Heated: No
Finished: No
Enclosed: No
Contiguous: Yes
Permitted: No
Wet space: No
Addition: No
Conversion: No

8 Floor 1 - Hall

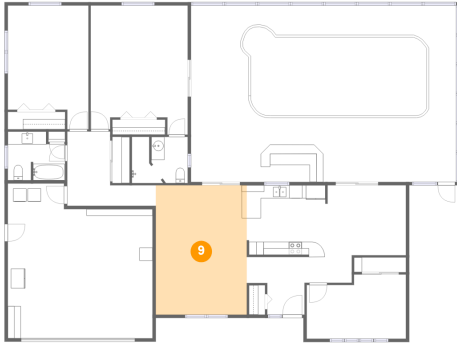


Dimensions: 13'6" x 11'4"
Area: 96 sq. ft
Counted as living area: Yes

Heated: Yes
Finished: Yes
Enclosed: Yes
Contiguous: Yes
Permitted: Yes
Wet space: No
Addition: No
Conversion: No

1761 Eaton Drive, Downtown Largo, Clearwater, Pinellas County, Florida, United States, 33756

9 Floor 1 - Living Room



Dimensions: 13'11" x 19'9"
Area: 274 sq. ft
Counted as living area: Yes

Heated: Yes
Finished: Yes
Enclosed: Yes
Contiguous: Yes
Permitted: Yes
Wet space: No
Addition: No
Conversion: No

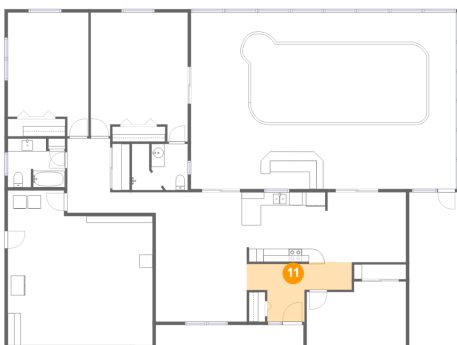
10 Floor 1 - Bath



Dimensions: 8'8" x 7'5"
Area: 58 sq. ft
Counted as living area: Yes

Heated: Yes
Finished: Yes
Enclosed: Yes
Contiguous: Yes
Permitted: Yes
Wet space: Yes
Addition: No
Conversion: No

11 Floor 1 - Foyer

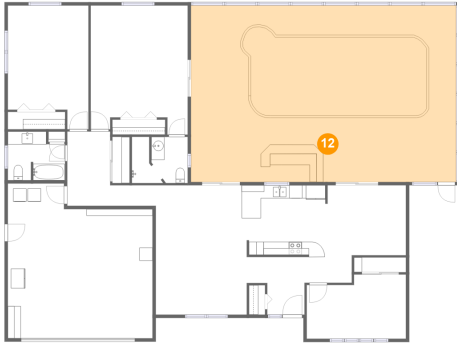


Dimensions: 16'1" x 8'9"
Area: 93 sq. ft
Counted as living area: Yes

Heated: Yes
Finished: Yes
Enclosed: Yes
Contiguous: Yes
Permitted: Yes
Wet space: No
Addition: No
Conversion: No

**1761 Eaton Drive, Downtown Largo, Clearwater,
Pinellas County, Florida, United States, 33756**

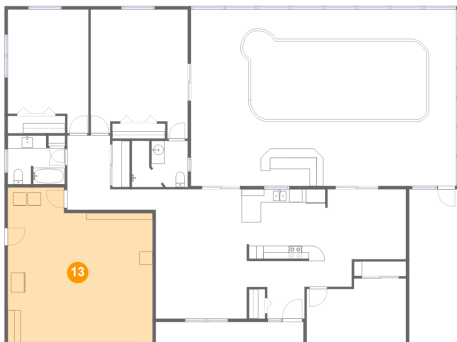
12 Floor 1 - Screened Porch



Dimensions: 40'6" x 26'11"
Area: 1091 sq. ft
Counted as living area: No

Heated: No
Finished: Yes
Enclosed: No
Contiguous: Yes
Permitted: Yes
Wet space: No
Addition: No
Conversion: No

13 Floor 1 - Garage



Dimensions: 22'1" x 23'7"
Area: 469 sq. ft
Counted as living area: No

Heated: No
Finished: No
Enclosed: Yes
Contiguous: Yes
Permitted: Yes
Wet space: No
Addition: No
Conversion: No