


Home data report

2052 Kitanning Pike, Parker, Butler County, Pennsylvania, United States, 16049



Property summary

 **1** Garages

 **3** Bedrooms

 **2** Bathrooms

 **0** Half baths

 **3** Floors

 **1,392** Gross living area sqft

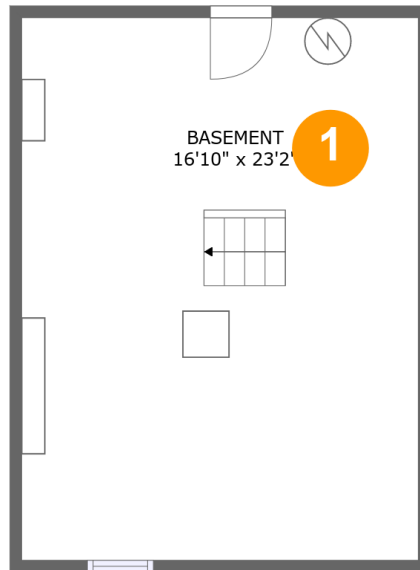
 **3,101** Total sqft

Scan captured on Tue, 07 Jan 2025 20:14:46 GMT

Information is calculated by **LIDAR** technology deemed highly reliable but not guaranteed.

Home data report

2052 Kitanning Pike, Parker, Butler County,
Pennsylvania, United States, 16049



Room dimensions

Floor 1

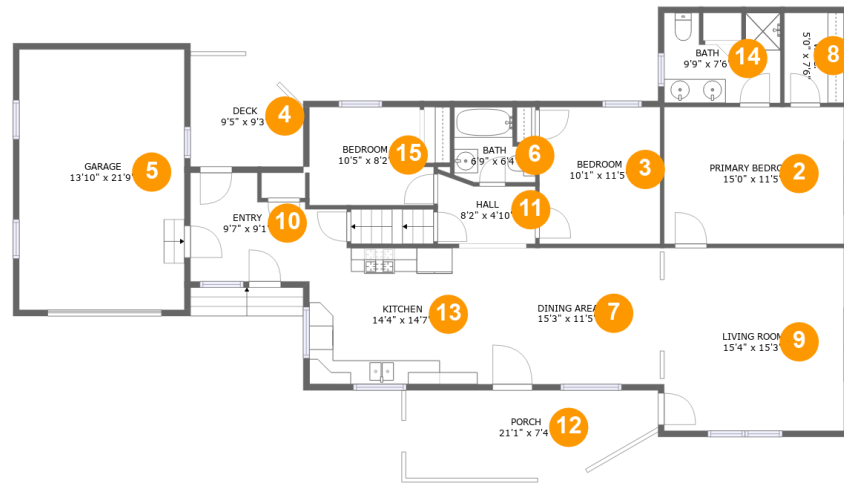
Total sqft: 433

Living area: 0

#		Dimensions	sqft	Counted as living area
1	Basement	16'10" x 23'2"	392 sq. ft	No

Scan captured on Tue, 07 Jan 2025 20:14:46 GMT

Information is calculated by **LIDAR** technology deemed highly reliable but not guaranteed.



Room dimensions

Floor 2

Total sqft: 1940 Living area: 1392

#		Dimensions	sqft	Counted as living area
2	Bedroom	15'0" x 11'5"	172 sq. ft	Yes
3	Bedroom	10'1" x 11'5"	115 sq. ft	Yes
4	Outdoor	9'5" x 9'3"	78 sq. ft	No
5	Garage	13'10" x 21'9"	301 sq. ft	No
6	Bath	6'9" x 6'4"	36 sq. ft	Yes
7	Dining Room	15'3" x 11'5"	174 sq. ft	Yes
8	Cl	5'0" x 7'6"	38 sq. ft	Yes
9	Living Room	15'4" x 15'3"	233 sq. ft	Yes
10	Entry	9'7" x 9'1"	77 sq. ft	Yes
11	Hall	8'2" x 4'10"	41 sq. ft	Yes
12	Outdoor	21'1" x 7'4"	139 sq. ft	No

Home data report

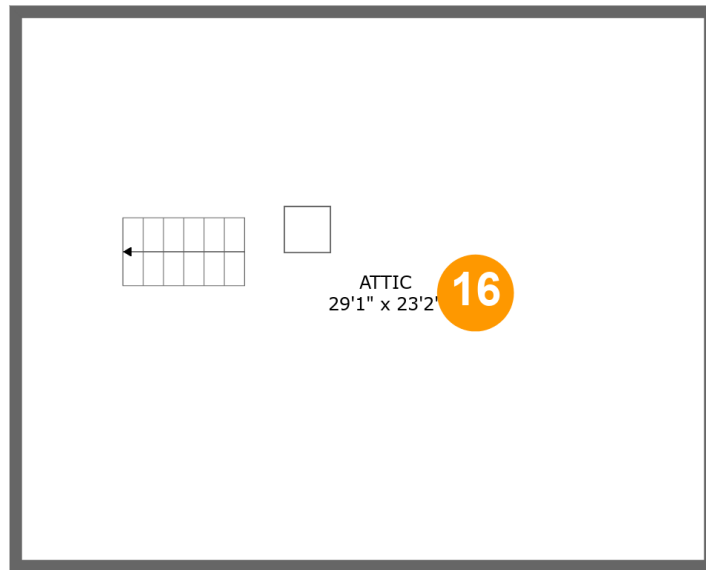
2052 Kitanning Pike, Parker, Butler County,
Pennsylvania, United States, 16049



#		Dimensions	sqft	Counted as living area
13	Kitchen	14'4" x 14'7"	172 sq. ft	Yes
14	Bath	9'9" x 7'6"	63 sq. ft	Yes
15	Bedroom	10'5" x 8'2"	80 sq. ft	Yes

Scan captured on Tue, 07 Jan 2025 20:14:46 GMT

Information is calculated by **LIDAR** technology deemed highly reliable but not guaranteed.



Room dimensions

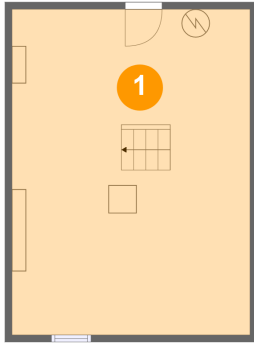
Floor 3

Total sqft: 728

Living area: 0

#		Dimensions	sqft	Counted as living area
16	Attic	29'1" x 23'2"	675 sq. ft	No

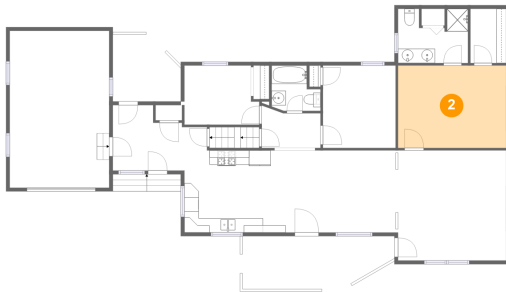
1 Floor 1 - Basement



Dimensions: 16'10" x 23'2"
Area: 392 sq. ft
Counted as living area: No

Heated: Yes
Finished: No
Enclosed: Yes
Contiguous: Yes
Permitted: Yes
Wet space: No
Addition: No
Conversion: No

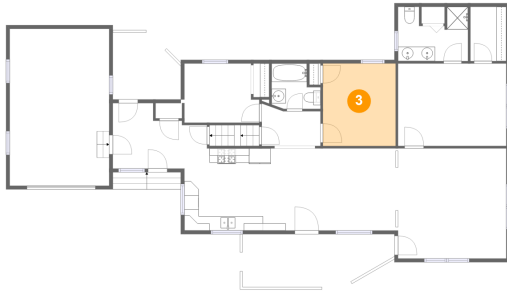
2 Floor 2 - Bedroom



Dimensions: 15'0" x 11'5"
Area: 172 sq. ft
Counted as living area: Yes

Heated: Yes
Finished: Yes
Enclosed: Yes
Contiguous: Yes
Permitted: Yes
Wet space: No
Addition: No
Conversion: No

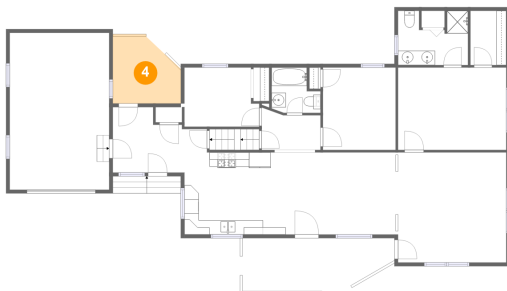
3 Floor 2 - Bedroom



Dimensions: 10'1" x 11'5"
Area: 115 sq. ft
Counted as living area: Yes

Heated: Yes
Finished: Yes
Enclosed: Yes
Contiguous: Yes
Permitted: Yes
Wet space: No
Addition: No
Conversion: No

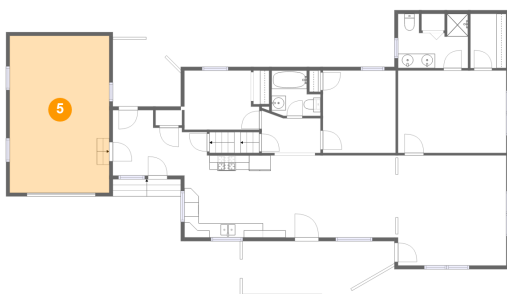
4 Floor 2 - Outdoor



Dimensions: 9'5" x 9'3"
Area: 78 sq. ft
Counted as living area: No

Heated: No
Finished: Yes
Enclosed: No
Contiguous: Yes
Permitted: Yes
Wet space: No
Addition: No
Conversion: No

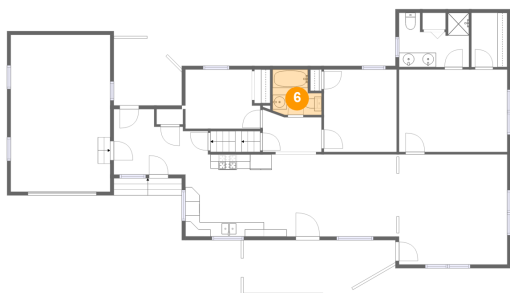
5 Floor 2 - Garage



Dimensions: 13'10" x 21'9"
Area: 301 sq. ft
Counted as living area: No

Heated: No
Finished: No
Enclosed: Yes
Contiguous: Yes
Permitted: Yes
Wet space: No
Addition: No
Conversion: No

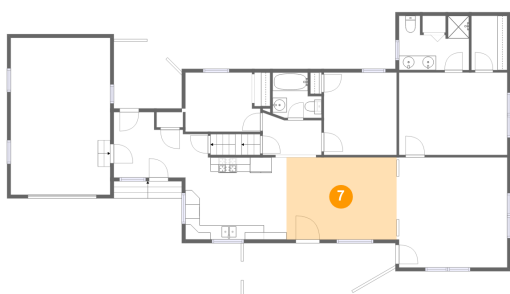
6 Floor 2 - Bath



Dimensions: 6'9" x 6'4"
Area: 36 sq. ft
Counted as living area: Yes

Heated: Yes
Finished: Yes
Enclosed: Yes
Contiguous: Yes
Permitted: Yes
Wet space: Yes
Addition: No
Conversion: No

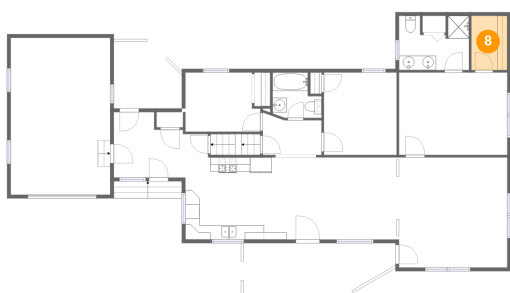
7 Floor 2 - Dining Room



Dimensions: 15'3" x 11'5"
Area: 174 sq. ft
Counted as living area: Yes

Heated: Yes
Finished: Yes
Enclosed: Yes
Contiguous: Yes
Permitted: Yes
Wet space: No
Addition: No
Conversion: No

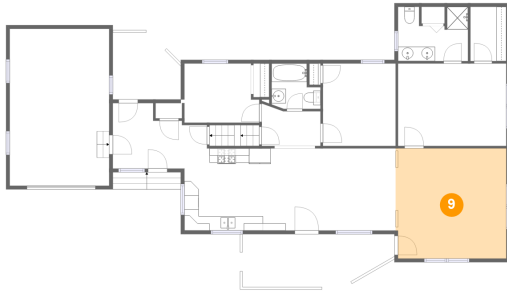
8 Floor 2 - Cl



Dimensions: 5'0" x 7'6"
Area: 38 sq. ft
Counted as living area: Yes

Heated: Yes
Finished: Yes
Enclosed: Yes
Contiguous: Yes
Permitted: Yes
Wet space: No
Addition: No
Conversion: No

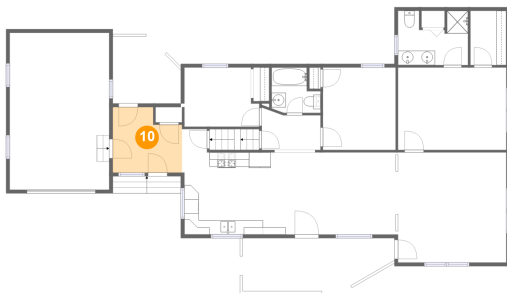
9 Floor 2 - Living Room



Dimensions: 15'4" x 15'3"
Area: 233 sq. ft
Counted as living area: Yes

Heated: Yes
Finished: Yes
Enclosed: Yes
Contiguous: Yes
Permitted: Yes
Wet space: No
Addition: No
Conversion: No

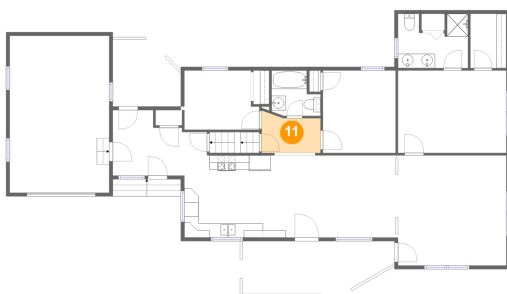
10 Floor 2 - Entry



Dimensions: 9'7" x 9'1"
Area: 77 sq. ft
Counted as living area: Yes

Heated: Yes
Finished: Yes
Enclosed: Yes
Contiguous: Yes
Permitted: Yes
Wet space: No
Addition: No
Conversion: No

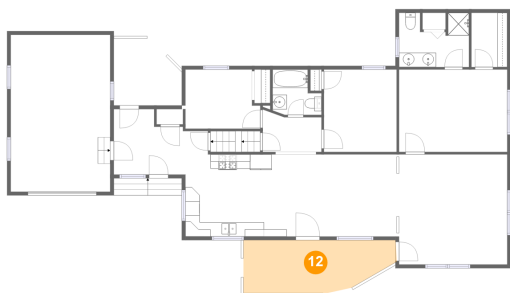
11 Floor 2 - Hall



Dimensions: 8'2" x 4'10"
Area: 41 sq. ft
Counted as living area: Yes

Heated: Yes
Finished: Yes
Enclosed: Yes
Contiguous: Yes
Permitted: Yes
Wet space: No
Addition: No
Conversion: No

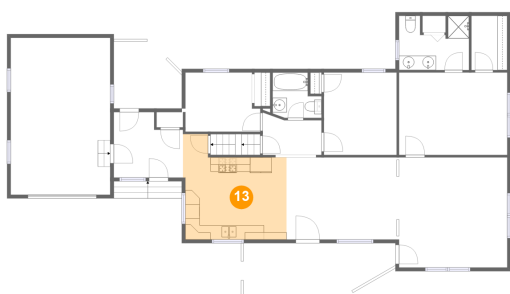
12 Floor 2 - Outdoor



Dimensions: 21'1" x 7'4"
Area: 139 sq. ft
Counted as living area: No

Heated: No
Finished: Yes
Enclosed: No
Contiguous: Yes
Permitted: Yes
Wet space: No
Addition: No
Conversion: No

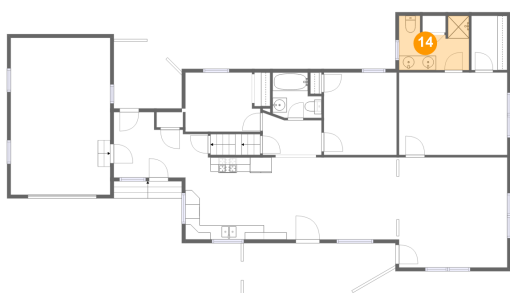
13 Floor 2 - Kitchen



Dimensions: 14'4" x 14'7"
Area: 172 sq. ft
Counted as living area: Yes

Heated: Yes
Finished: Yes
Enclosed: Yes
Contiguous: Yes
Permitted: Yes
Wet space: No
Addition: No
Conversion: No

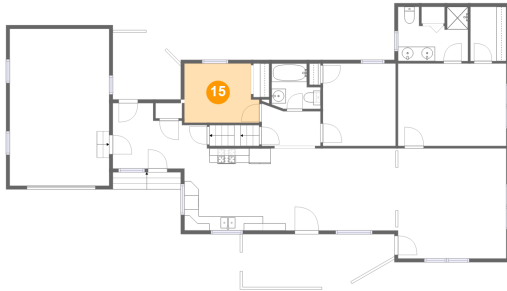
14 Floor 2 - Bath



Dimensions: 9'9" x 7'6"
Area: 63 sq. ft
Counted as living area: Yes

Heated: Yes
Finished: Yes
Enclosed: Yes
Contiguous: Yes
Permitted: Yes
Wet space: Yes
Addition: No
Conversion: No

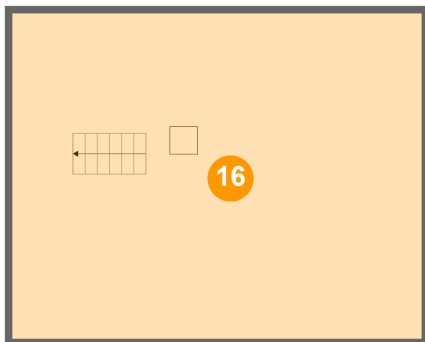
15 Floor 2 - Bedroom



Dimensions: 10'5" x 8'2"
Area: 80 sq. ft
Counted as living area: Yes

Heated: Yes
Finished: Yes
Enclosed: Yes
Contiguous: Yes
Permitted: Yes
Wet space: No
Addition: No
Conversion: No

16 Floor 3 - Attic



Dimensions: 29'1" x 23'2"
Area: 675 sq. ft
Counted as living area: No

Heated: No
Finished: No
Enclosed: Yes
Contiguous: Yes
Permitted: Yes
Wet space: No
Addition: No
Conversion: No