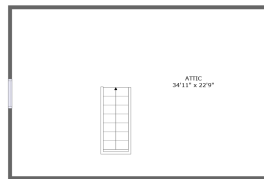
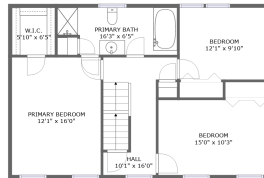


3 Harmony Lane, Salem, Rockingham County, New Hampshire, United States, 03079



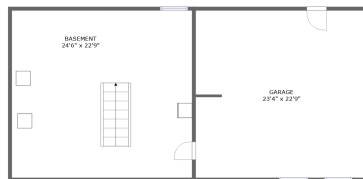
FLOOR 4



FLOOR 3




FLOOR 2




FLOOR 1

Property summary

 **1** Garages

 **3** Bedrooms

 **1** Bathrooms

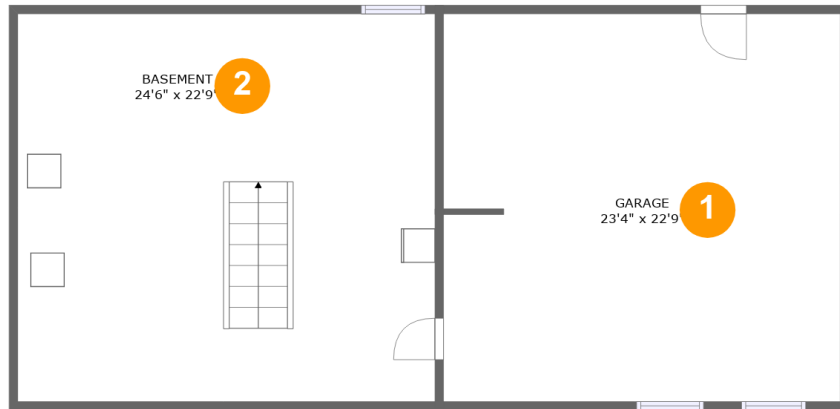
 **1** Half baths

 **4** Floors

 **2,043**
Gross living
area sqft

 **4,072**
Total sqft

3 Harmony Lane, Salem, Rockingham County, New Hampshire, United States, 03079



Room dimensions

Floor 1

Total sqft: 1174 Living area: 0

#		Dimensions	sqft	Counted as living area
1	Garage	23'4" x 22'9"	530 sq. ft	No
2	Basement	24'6" x 22'9"	559 sq. ft	No

3 Harmony Lane, Salem, Rockingham County, New Hampshire, United States, 03079



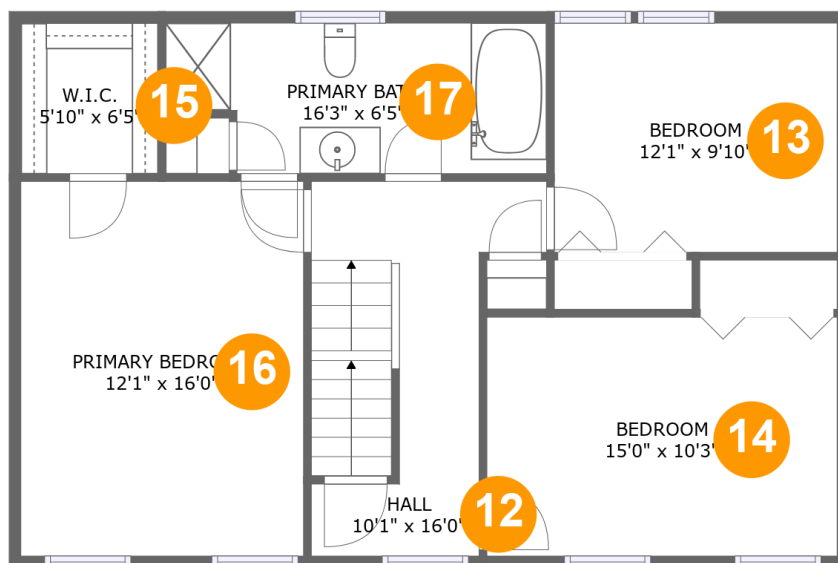
Room dimensions

Floor 2

Total sqft: 1188 Living area: 1188

#		Dimensions	sqft	Counted as living area
3	Foyer	9'10" x 13'1"	105 sq. ft	Yes
4	Breakfast Nook	9'0" x 11'11"	99 sq. ft	Yes
5	WC	5'11" x 5'6"	33 sq. ft	Yes
6	Dining Room	12'0" x 11'0"	132 sq. ft	Yes
7	Kitchen	13'6" x 11'6"	147 sq. ft	Yes
8	Family Room	13'5" x 22'9"	306 sq. ft	Yes
9	Entry	5'10" x 5'6"	32 sq. ft	Yes
10	Laundry	5'11" x 2'4"	14 sq. ft	Yes
11	Living Room	12'1" x 14'3"	172 sq. ft	Yes

3 Harmony Lane, Salem, Rockingham County, New Hampshire, United States, 03079



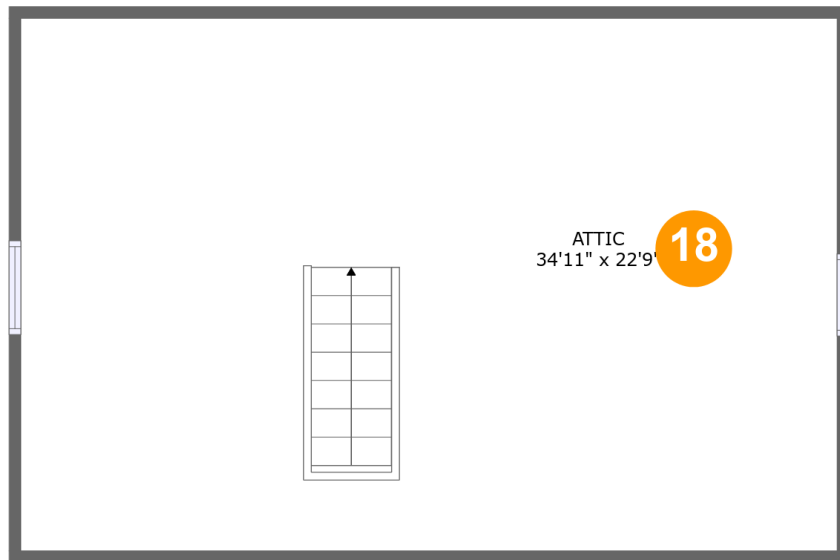
Room dimensions

Floor 3

Total sqft: 855 Living area: 855

#		Dimensions	sqft	Counted as living area
12	Hall	10'1" x 16'0"	121 sq. ft	Yes
13	Bedroom	12'1" x 9'10"	119 sq. ft	Yes
14	Bedroom	15'0" x 10'3"	153 sq. ft	Yes
15	W.I.C.	5'10" x 6'5"	38 sq. ft	Yes
16	Primary Bedroom	12'1" x 16'0"	194 sq. ft	Yes
17	Primary Bath	16'3" x 6'5"	97 sq. ft	Yes

3 Harmony Lane, Salem, Rockingham County, New Hampshire, United States, 03079



Room dimensions

Floor 4

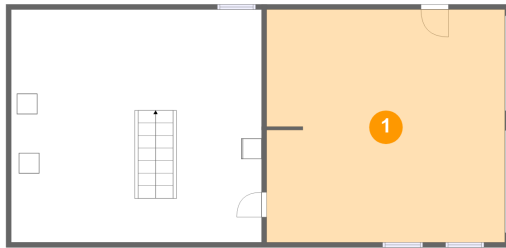
Total sqft: 855

Living area: 0

#		Dimensions	sqft	Counted as living area
18	Attic	34'11" x 22'9"	404 sq. ft	No

3 Harmony Lane, Salem, Rockingham County, New Hampshire, United States, 03079

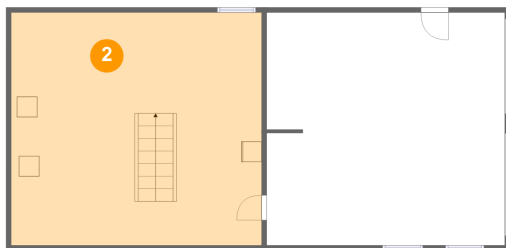
1 Floor 1 - Garage



Dimensions: 23'4" x 22'9"
Area: 530 sq. ft
Counted as living area: No

Heated: No
Finished: No
Enclosed: Yes
Contiguous: Yes
Permitted: Yes
Wet space: No
Addition: No
Conversion: No

2 Floor 1 - Basement

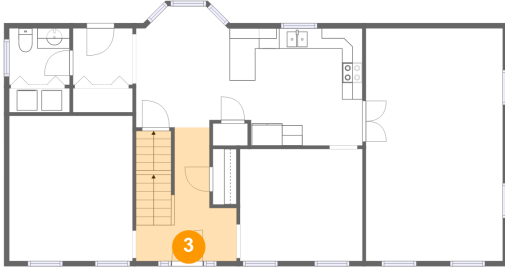


Dimensions: 24'6" x 22'9"
Area: 559 sq. ft
Counted as living area: No

Heated: Yes
Finished: No
Enclosed: Yes
Contiguous: Yes
Permitted: Yes
Wet space: No
Addition: No
Conversion: No

3 Harmony Lane, Salem, Rockingham County, New Hampshire, United States, 03079

3 Floor 2 - Foyer



Dimensions: 9'10" x 13'1"
Area: 105 sq. ft
Counted as living area: Yes

Heated: Yes
Finished: Yes
Enclosed: Yes
Contiguous: Yes
Permitted: Yes
Wet space: No
Addition: No
Conversion: No

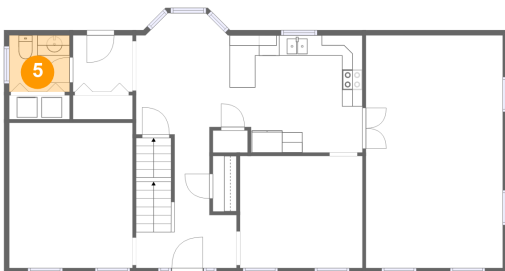
4 Floor 2 - Breakfast Nook



Dimensions: 9'0" x 11'11"
Area: 99 sq. ft
Counted as living area: Yes

Heated: Yes
Finished: Yes
Enclosed: Yes
Contiguous: Yes
Permitted: Yes
Wet space: No
Addition: No
Conversion: No

5 Floor 2 - WC



Dimensions: 5'11" x 5'6"
Area: 33 sq. ft
Counted as living area: Yes

Heated: Yes
Finished: Yes
Enclosed: Yes
Contiguous: Yes
Permitted: Yes
Wet space: Yes
Addition: No
Conversion: No

3 Harmony Lane, Salem, Rockingham County, New Hampshire, United States, 03079

6 Floor 2 - Dining Room



Dimensions: 12'0" x 11'0"
Area: 132 sq. ft
Counted as living area: Yes

Heated: Yes
Finished: Yes
Enclosed: Yes
Contiguous: Yes
Permitted: Yes
Wet space: No
Addition: No
Conversion: No

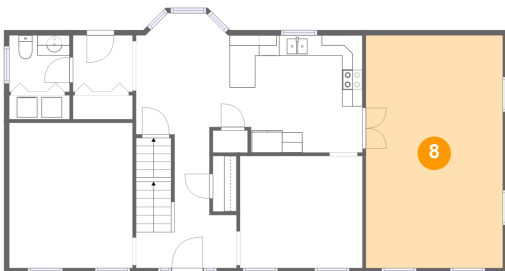
7 Floor 2 - Kitchen



Dimensions: 13'6" x 11'6"
Area: 147 sq. ft
Counted as living area: Yes

Heated: Yes
Finished: Yes
Enclosed: Yes
Contiguous: Yes
Permitted: Yes
Wet space: No
Addition: No
Conversion: No

8 Floor 2 - Family Room

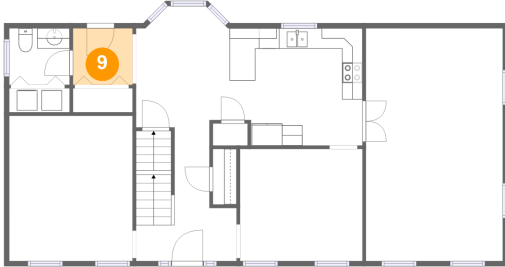


Dimensions: 13'5" x 22'9"
Area: 306 sq. ft
Counted as living area: Yes

Heated: Yes
Finished: Yes
Enclosed: Yes
Contiguous: Yes
Permitted: Yes
Wet space: No
Addition: No
Conversion: No

3 Harmony Lane, Salem, Rockingham County, New Hampshire, United States, 03079

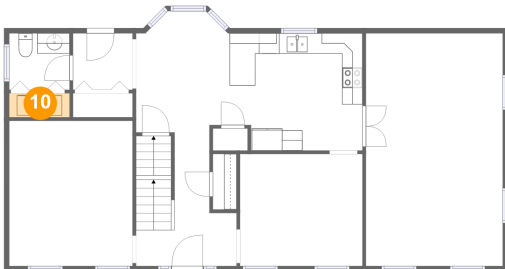
9 Floor 2 - Entry



Dimensions: 5'10" x 5'6"
Area: 32 sq. ft
Counted as living area: Yes

Heated: Yes
Finished: Yes
Enclosed: Yes
Contiguous: Yes
Permitted: Yes
Wet space: No
Addition: No
Conversion: No

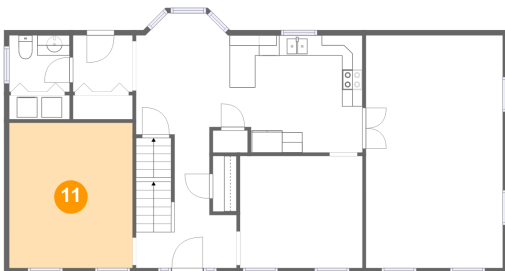
10 Floor 2 - Laundry



Dimensions: 5'11" x 2'4"
Area: 14 sq. ft
Counted as living area: Yes

Heated: Yes
Finished: Yes
Enclosed: Yes
Contiguous: Yes
Permitted: Yes
Wet space: No
Addition: No
Conversion: No

11 Floor 2 - Living Room

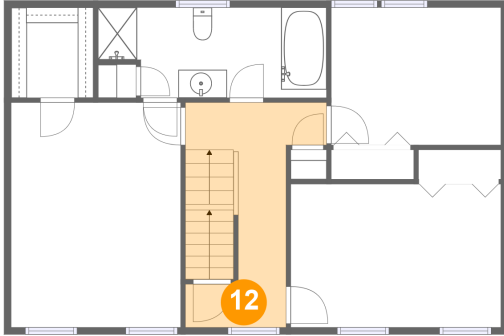


Dimensions: 12'1" x 14'3"
Area: 172 sq. ft
Counted as living area: Yes

Heated: Yes
Finished: Yes
Enclosed: Yes
Contiguous: Yes
Permitted: Yes
Wet space: No
Addition: No
Conversion: No

3 Harmony Lane, Salem, Rockingham County, New Hampshire, United States, 03079

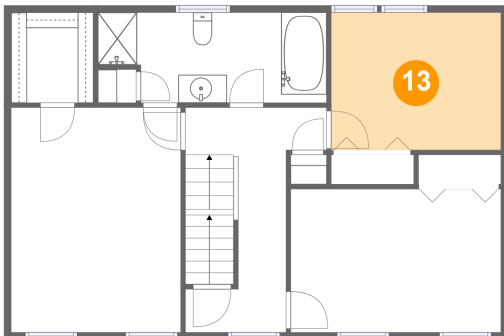
12 Floor 3 - Hall



Dimensions: 10'1" x 16'0"
Area: 121 sq. ft
Counted as living area: Yes

Heated: Yes
Finished: Yes
Enclosed: Yes
Contiguous: Yes
Permitted: Yes
Wet space: No
Addition: No
Conversion: No

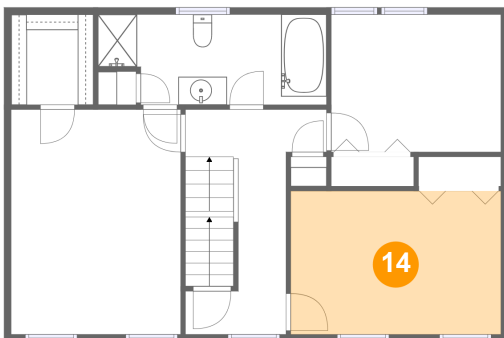
13 Floor 3 - Bedroom



Dimensions: 12'1" x 9'10"
Area: 119 sq. ft
Counted as living area: Yes

Heated: Yes
Finished: Yes
Enclosed: Yes
Contiguous: Yes
Permitted: Yes
Wet space: No
Addition: No
Conversion: No

14 Floor 3 - Bedroom

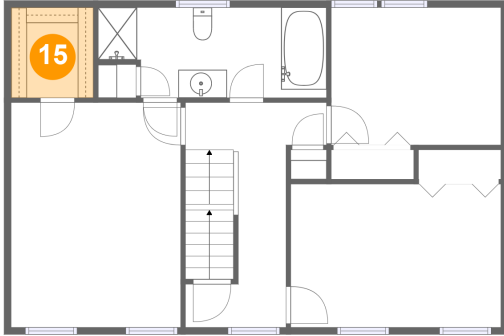


Dimensions: 15'0" x 10'3"
Area: 153 sq. ft
Counted as living area: Yes

Heated: Yes
Finished: Yes
Enclosed: Yes
Contiguous: Yes
Permitted: Yes
Wet space: No
Addition: No
Conversion: No

3 Harmony Lane, Salem, Rockingham County, New Hampshire, United States, 03079

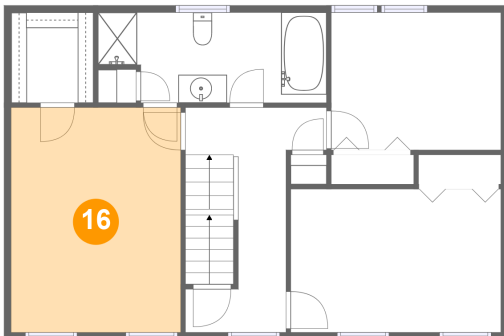
15 Floor 3 - W.I.C.



Dimensions: 5'10" x 6'5"
Area: 38 sq. ft
Counted as living area: Yes

Heated: Yes
Finished: Yes
Enclosed: Yes
Contiguous: Yes
Permitted: Yes
Wet space: No
Addition: No
Conversion: No

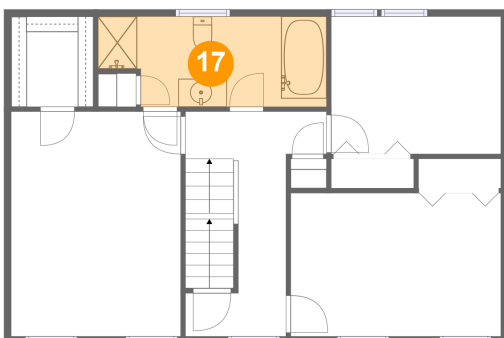
16 Floor 3 - Primary Bedroom



Dimensions: 12'1" x 16'0"
Area: 194 sq. ft
Counted as living area: Yes

Heated: Yes
Finished: Yes
Enclosed: Yes
Contiguous: Yes
Permitted: Yes
Wet space: No
Addition: No
Conversion: No

17 Floor 3 - Primary Bath

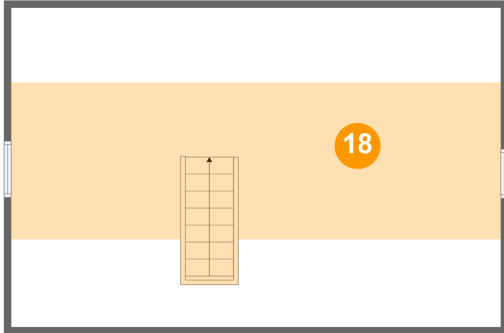


Dimensions: 16'3" x 6'5"
Area: 97 sq. ft
Counted as living area: Yes

Heated: Yes
Finished: Yes
Enclosed: Yes
Contiguous: Yes
Permitted: Yes
Wet space: Yes
Addition: No
Conversion: No

3 Harmony Lane, Salem, Rockingham County, New Hampshire, United States, 03079

18 Floor 4 - Attic



Dimensions: 34'11" x 22'9"
Area: 404 sq. ft
Counted as living area: No

Heated: No
Finished: No
Enclosed: Yes
Contiguous: Yes
Permitted: Yes
Wet space: No
Addition: No
Conversion: No