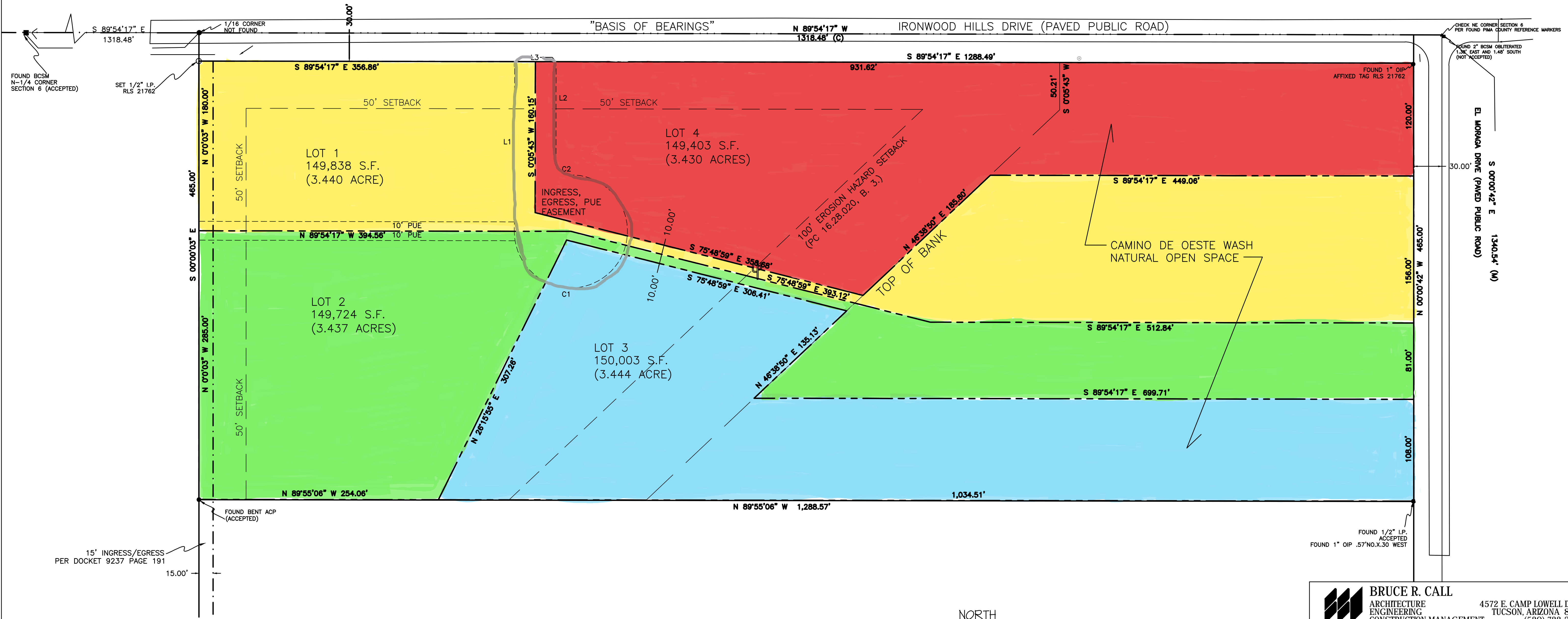
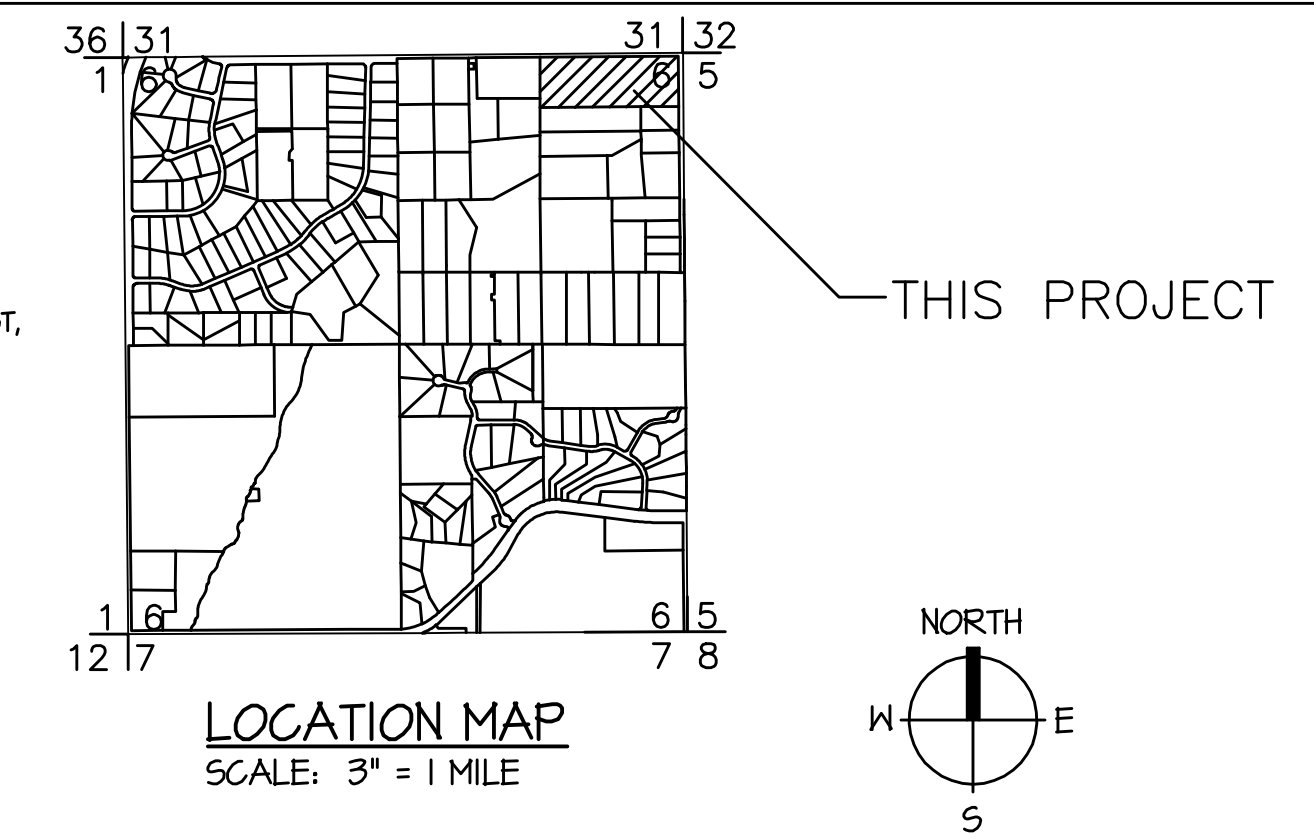


CURVE DATA			
MARK	RADIUS	DELTA	ARC LENGTH
C1	60.00'	270° 45' 39"	283.54'
C2	15.00'	90° 45' 23"	23.16'

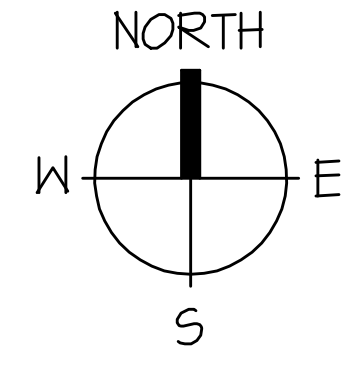
LINE DATA		
MARK	BEARING	DISTANCE
L1	S 00° 05' 43" E	180.00'
L2	N 00° 05' 43" W	105.00'
L3	N 89° 54' 17" W	44.00'

IRONWOOD PARK PLACE

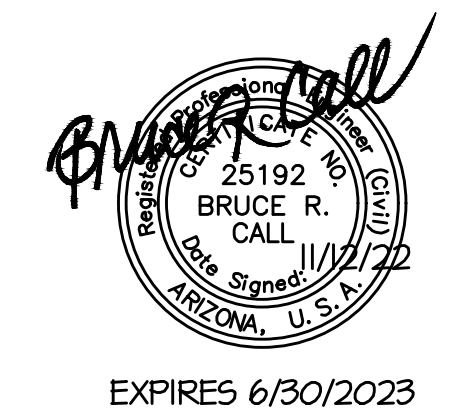
A PORTION OF THE NE 1/4 OF THE NE 1/4 OF SECTION 6, TOWNSHIP 14 SOUTH, RANGE 13 EAST, GILA AND SALT RIVER MERIDIAN, PIMA COUNTY, ARIZONA
TAX ID 116-07-1060



LOT LAYOUT
SCALE: 1" = 50'



- LEGEND**
- SET 1/2" IP LS 21762
 - FOUND AS NOTED
 - - - PUBLIC UTILITY EASEMENT LINE
 - - - BUILDING SETBACK LINE
 - - - PROPERTY LINE



EXPIRES 6/30/2023

BRUCE R. CALL
ARCHITECTURE
ENGINEERING
CONSTRUCTION MANAGEMENT
4572 E. CAMP LOWELL DRIVE
TUCSON, ARIZONA 85712
(520) 722-3668

LOT LAYOUT

IRONWOOD PARK
3425 W. IRONWOOD HILL DRIVE
TUCSON, ARIZONA 85715
BEING A PORTION OF THE NE 1/4 OF THE NE 1/4 OF SECTION 6, TOWNSHIP 14 SOUTH, RANGE 13 EAST, GILA AND SALT RIVER MERIDIAN, PIMA COUNTY, ARIZONA

PROJECT CASE NO:
TAX ID NO: 116-07-1060
REVISION DATE: 11/12/2022