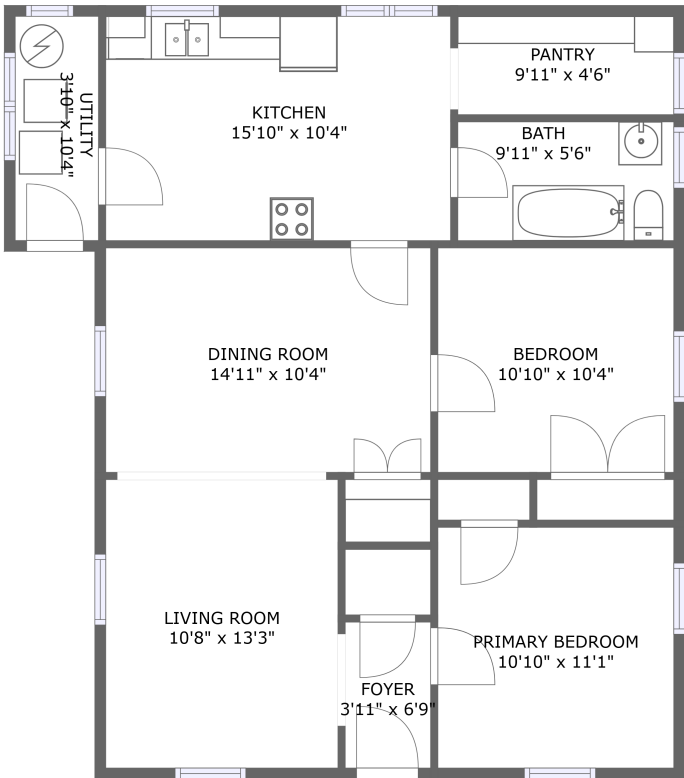


Home report

863 Chorro Street, San Luis Obispo, California 93401, United States



FLOOR 1

Total Area: 949 sq. ft

Floor 1: 949 sq. ft

Excluded: Walls: 65 sq. ft

Property summary

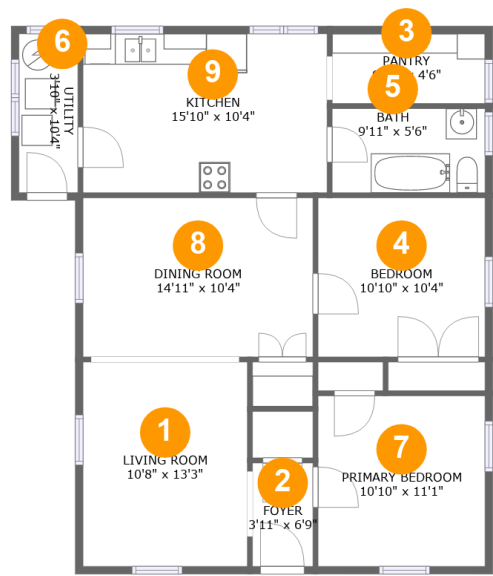
 1 Floors

 2 Bedrooms

 1 Bathrooms

Home report

863 Chorro Street, San Luis Obispo, California 93401, United States



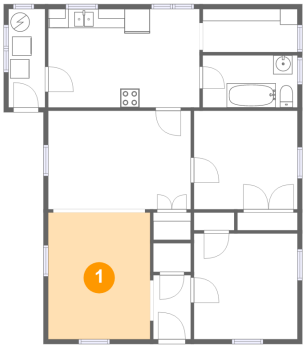
Room dimensions

Floor 1 Total:949sqft Excluded: 0sqft

#		Max Dimensions	sqft	Included
1	Living Room	10'8" x 13'3"	142 sq. ft	Yes
2	Foyer	3'11" x 6'9"	26 sq. ft	Yes
3	Pantry	9'11" x 4'6"	45 sq. ft	Yes
4	Bedroom	10'10" x 10'4"	112 sq. ft	Yes
5	Bath	9'11" x 5'6"	54 sq. ft	Yes
6	Utility	3'10" x 10'4"	40 sq. ft	Yes
7	Primary Bedroom	10'10" x 11'1"	120 sq. ft	Yes
8	Dining Room	14'11" x 10'4"	155 sq. ft	Yes
9	Kitchen	15'10" x 10'4"	164 sq. ft	Yes

863 Chorro Street, San Luis Obispo, California 93401, United States

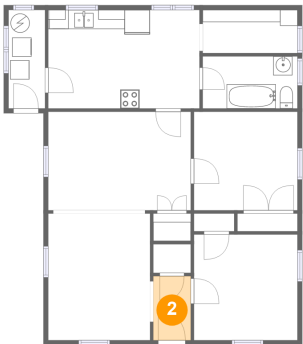
1 Floor 1 - Living Room



Max Dimensions: 10'8" x 13'3"
Calculated Area: 142 sq. ft
Included: Yes

Heated: Yes
Finished: Yes
Enclosed: Yes
Contiguous: Yes
Permitted: Yes
Wet space: No
Addition: No
Conversion: No

2 Floor 1 - Foyer

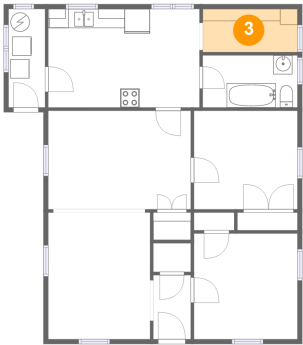


Max Dimensions: 3'11" x 6'9"
Calculated Area: 26 sq. ft
Included: Yes

Heated: Yes
Finished: Yes
Enclosed: Yes
Contiguous: Yes
Permitted: Yes
Wet space: No
Addition: No
Conversion: No

863 Chorro Street, San Luis Obispo, California 93401, United States

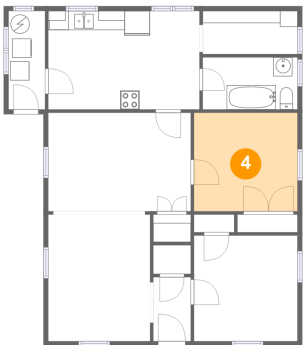
3 Floor 1 - Pantry



Max Dimensions: 9'11" x 4'6"
Calculated Area: 45 sq. ft
Included: Yes

Heated: Yes
Finished: Yes
Enclosed: Yes
Contiguous: Yes
Permitted: Yes
Wet space: No
Addition: No
Conversion: No

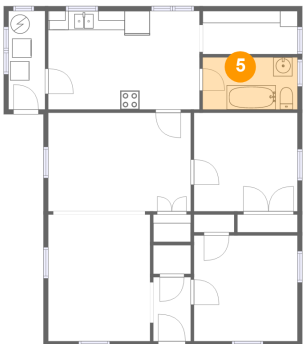
4 Floor 1 - Bedroom



Max Dimensions: 10'10" x 10'4"
Calculated Area: 112 sq. ft
Included: Yes

Heated: Yes
Finished: Yes
Enclosed: Yes
Contiguous: Yes
Permitted: Yes
Wet space: No
Addition: No
Conversion: No

5 Floor 1 - Bath

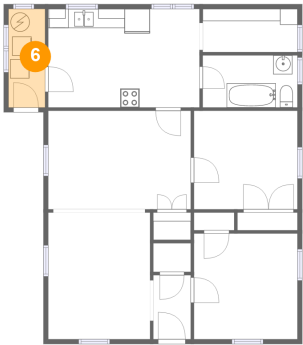


Max Dimensions: 9'11" x 5'6"
Calculated Area: 54 sq. ft
Included: Yes

Heated: Yes
Finished: Yes
Enclosed: Yes
Contiguous: Yes
Permitted: Yes
Wet space: Yes
Addition: No
Conversion: No

863 Chorro Street, San Luis Obispo, California 93401, United States

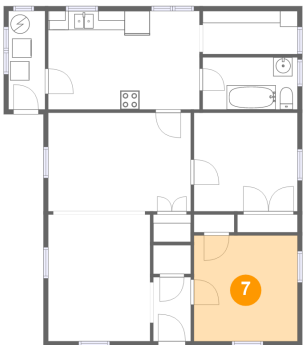
6 Floor 1 - Utility



Max Dimensions: 3'10" x 10'4"
Calculated Area: 40 sq. ft
Included: Yes

Heated: Yes
Finished: Yes
Enclosed: Yes
Contiguous: Yes
Permitted: Yes
Wet space: No
Addition: No
Conversion: No

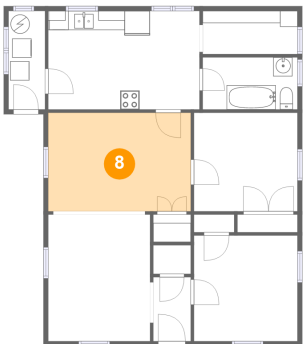
7 Floor 1 - Primary Bedroom



Max Dimensions: 10'10" x 11'1"
Calculated Area: 120 sq. ft
Included: Yes

Heated: Yes
Finished: Yes
Enclosed: Yes
Contiguous: Yes
Permitted: Yes
Wet space: No
Addition: No
Conversion: No

8 Floor 1 - Dining Room

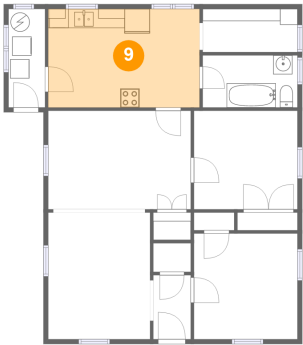


Max Dimensions: 14'11" x 10'4"
Calculated Area: 155 sq. ft
Included: Yes

Heated: Yes
Finished: Yes
Enclosed: Yes
Contiguous: Yes
Permitted: Yes
Wet space: No
Addition: No
Conversion: No

863 Chorro Street, San Luis Obispo, California 93401, United States

9 Floor 1 - Kitchen



Max Dimensions: 15'10" x 10'4"
Calculated Area: 164 sq. ft
Included: Yes

Heated: Yes
Finished: Yes
Enclosed: Yes
Contiguous: Yes
Permitted: Yes
Wet space: No
Addition: No
Conversion: No