


Home report


1143 Appletree Lane, Millcreek Township, Erie, Erie
County, Pennsylvania, United States, 16509



Property summary

 **0**
Garages

 **2**
Bedrooms

 **1**
Bathrooms

 **1**
Half baths

 **3**
Floors

 **1,530**
Gross living
area sqft

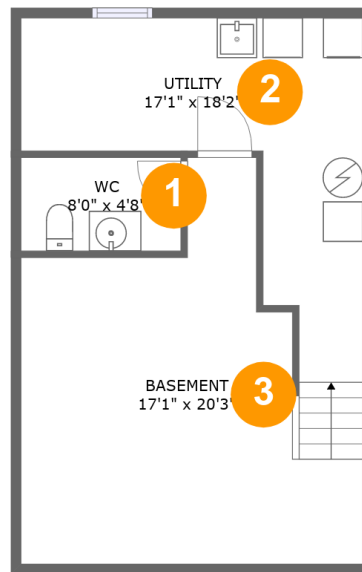
 **1,684**
Total sqft

Scan captured on Tue, 04 Feb 2025 03:03:56 GMT

Information is calculated by LIDAR technology deemed highly reliable but not guaranteed.

Home report

1143 Appletree Lane, Millcreek Township, Erie, Erie
County, Pennsylvania, United States, 16509



Room dimensions

Floor 1

Total sqft: 510 Living area: 510

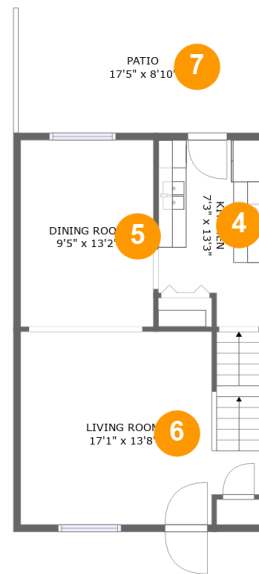
#		Dimensions	sqft	Counted as living area
1	WC	8'0" x 4'8"	37 sq. ft	Yes
2	Utility	17'1" x 18'2"	164 sq. ft	Yes
3	Basement	17'1" x 20'3"	251 sq. ft	Yes

Scan captured on Tue, 04 Feb 2025 03:03:56 GMT

Information is calculated by LIDAR technology deemed highly reliable but not guaranteed.

Home report

1143 Appletree Lane, Millcreek Township, Erie, Erie
County, Pennsylvania, United States, 16509



Room dimensions

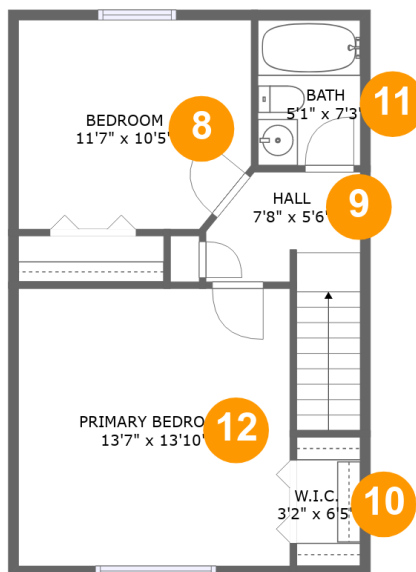
Floor 2

Total sqft: 664 Living area: 510

#		Dimensions	sqft	Counted as living area
4	Kitchen	7'3" x 13'3"	87 sq. ft	Yes
5	Dining Room	9'5" x 13'2"	124 sq. ft	Yes
6	Living Room	17'1" x 13'8"	224 sq. ft	Yes
7	Patio	17'5" x 8'10"	154 sq. ft	No

Scan captured on Tue, 04 Feb 2025 03:03:56 GMT

Information is calculated by LIDAR technology deemed highly reliable but not guaranteed.



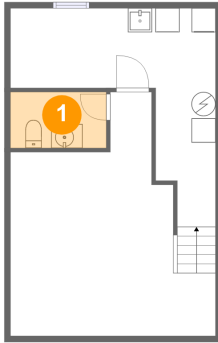
Room dimensions

Floor 3

Total sqft: 510 Living area: 510

#		Dimensions	sqft	Counted as living area
8	Bedroom	11'7" x 10'5"	117 sq. ft	Yes
9	Hall	7'8" x 5'6"	62 sq. ft	Yes
10	W.I.C.	3'2" x 6'5"	20 sq. ft	Yes
11	Bath	5'1" x 7'3"	37 sq. ft	Yes
12	Primary Bedroom	13'7" x 13'10"	187 sq. ft	Yes

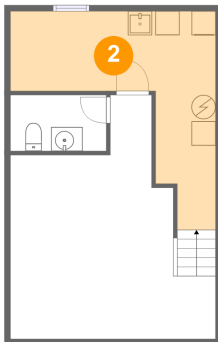
1 Floor 1 - WC



Dimensions: 8'0" x 4'8"
Area: 37 sq. ft
Counted as living area: Yes

Heated: Yes
Finished: Yes
Enclosed: Yes
Contiguous: Yes
Permitted: Yes
Wet space: Yes
Addition: No
Conversion: No

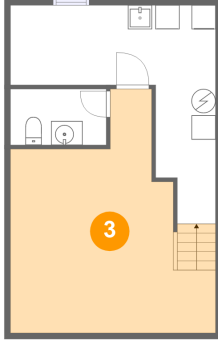
2 Floor 1 - Utility



Dimensions: 17'1" x 18'2"
Area: 164 sq. ft
Counted as living area: Yes

Heated: Yes
Finished: Yes
Enclosed: Yes
Contiguous: Yes
Permitted: Yes
Wet space: No
Addition: No
Conversion: No

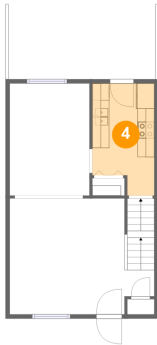
3 Floor 1 - Basement



Dimensions: 17'1" x 20'3"
Area: 251 sq. ft
Counted as living area: Yes

Heated: Yes
Finished: Yes
Enclosed: Yes
Contiguous: Yes
Permitted: Yes
Wet space: No
Addition: No
Conversion: No

4 Floor 2 - Kitchen



Dimensions: 7'3" x 13'3"
Area: 87 sq. ft
Counted as living area: Yes

Heated: Yes
Finished: Yes
Enclosed: Yes
Contiguous: Yes
Permitted: Yes
Wet space: No
Addition: No
Conversion: No

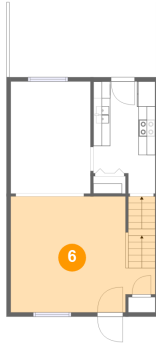
5 Floor 2 - Dining Room



Dimensions: 9'5" x 13'2"
Area: 124 sq. ft
Counted as living area: Yes

Heated: Yes
Finished: Yes
Enclosed: Yes
Contiguous: Yes
Permitted: Yes
Wet space: No
Addition: No
Conversion: No

6 Floor 2 - Living Room



Dimensions: 17'1" x 13'8"
Area: 224 sq. ft
Counted as living area: Yes

Heated: Yes
Finished: Yes
Enclosed: Yes
Contiguous: Yes
Permitted: Yes
Wet space: No
Addition: No
Conversion: No

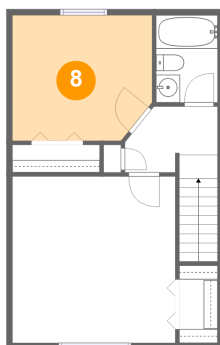
7 Floor 2 - Patio



Dimensions: 17'5" x 8'10"
Area: 154 sq. ft
Counted as living area: No

Heated: No
Finished: Yes
Enclosed: No
Contiguous: Yes
Permitted: Yes
Wet space: No
Addition: No
Conversion: No

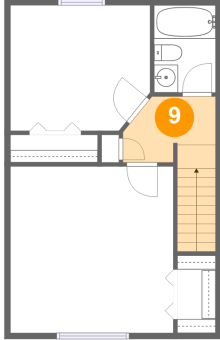
8 Floor 3 - Bedroom



Dimensions: 11'7" x 10'5"
Area: 117 sq. ft
Counted as living area: Yes

Heated: Yes
Finished: Yes
Enclosed: Yes
Contiguous: Yes
Permitted: Yes
Wet space: No
Addition: No
Conversion: No

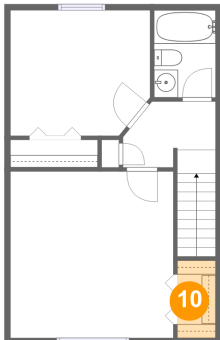
9 Floor 3 - Hall



Dimensions: 7'8" x 5'6"
Area: 62 sq. ft
Counted as living area: Yes

Heated: Yes
Finished: Yes
Enclosed: Yes
Contiguous: Yes
Permitted: Yes
Wet space: No
Addition: No
Conversion: No

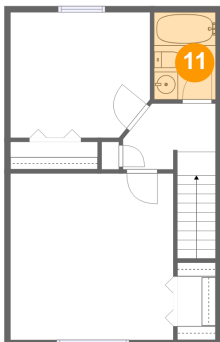
10 Floor 3 - W.I.C.



Dimensions: 3'2" x 6'5"
Area: 20 sq. ft
Counted as living area: Yes

Heated: Yes
Finished: Yes
Enclosed: Yes
Contiguous: Yes
Permitted: Yes
Wet space: No
Addition: No
Conversion: No

11 Floor 3 - Bath



Dimensions: 5'1" x 7'3"
Area: 37 sq. ft
Counted as living area: Yes

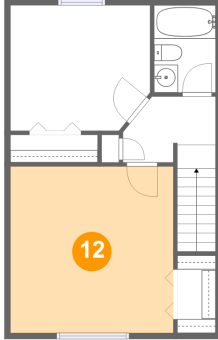
Heated: Yes
Finished: Yes
Enclosed: Yes
Contiguous: Yes
Permitted: Yes
Wet space: Yes
Addition: No
Conversion: No

Home report

1143 Appletree Lane, Millcreek Township, Erie, Erie
County, Pennsylvania, United States, 16509



12 Floor 3 - Primary Bedroom



Dimensions: 13'7" x 13'10"
Area: 187 sq. ft
Counted as living area: Yes

Heated: Yes
Finished: Yes
Enclosed: Yes
Contiguous: Yes
Permitted: Yes
Wet space: No
Addition: No
Conversion: No