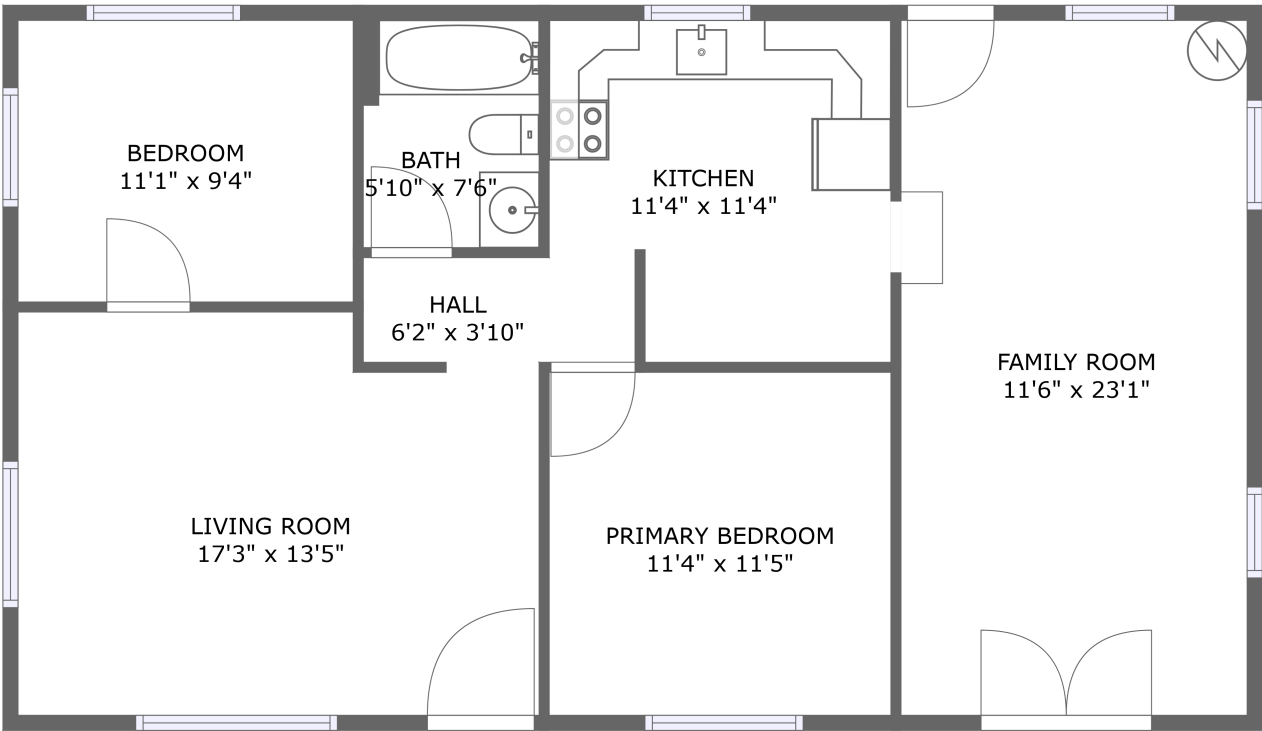


Home report

512 NW Cecil Ave,Roseburg,OR,US



FLOOR 1

Total Area: 1005 sq. ft

Floor 1: 1005 sq. ft

Excluded:

Property summary

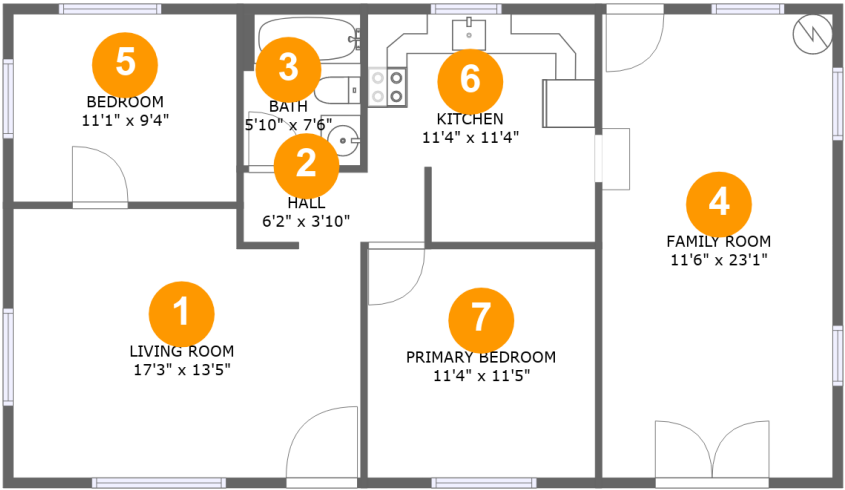
 1 Floors

 2 Bedrooms

 1 Bathrooms

Home report

512 NW Cecil Ave,Roseburg,OR,US

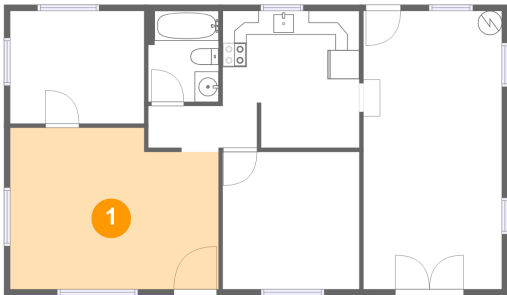


Room dimensions

Floor 1 Total:1005sqft Excluded: 0sqft

#		Max Dimensions	sqft	Included
1	Living Room	17'3" x 13'5"	219 sq. ft	Yes
2	Hall	6'2" x 3'10"	22 sq. ft	Yes
3	Bath	5'10" x 7'6"	44 sq. ft	Yes
4	Family Room	11'6" x 23'1"	265 sq. ft	Yes
5	Bedroom	11'1" x 9'4"	104 sq. ft	Yes
6	Kitchen	11'4" x 11'4"	127 sq. ft	Yes
7	Primary Bedroom	11'4" x 11'5"	129 sq. ft	Yes

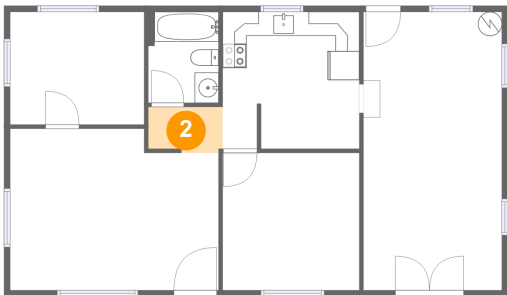
1 Floor 1 - Living Room



Max Dimensions: 17'3" x 13'5"
Calculated Area: 219 sq. ft
Included: Yes

Heated: Yes
Finished: Yes
Enclosed: Yes
Contiguous: Yes
Permitted: Yes
Wet space: No
Addition: No
Conversion: No

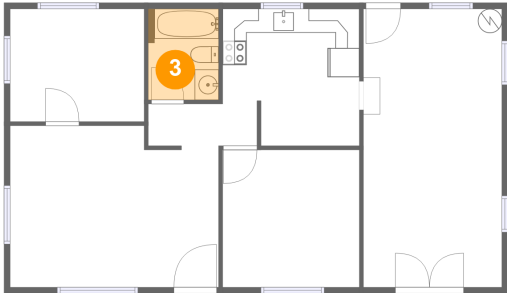
2 Floor 1 - Hall



Max Dimensions: 6'2" x 3'10"
Calculated Area: 22 sq. ft
Included: Yes

Heated: Yes
Finished: Yes
Enclosed: Yes
Contiguous: Yes
Permitted: Yes
Wet space: No
Addition: No
Conversion: No

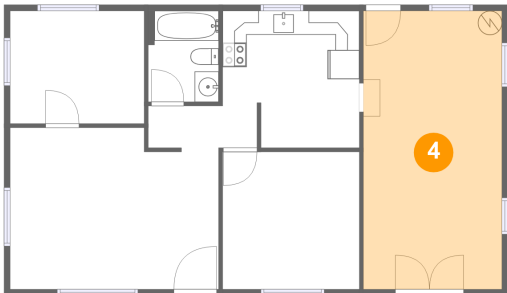
3 Floor 1 - Bath



Max Dimensions: 5'10" x 7'6"
Calculated Area: 44 sq. ft
Included: Yes

Heated: Yes
Finished: Yes
Enclosed: Yes
Contiguous: Yes
Permitted: Yes
Wet space: Yes
Addition: No
Conversion: No

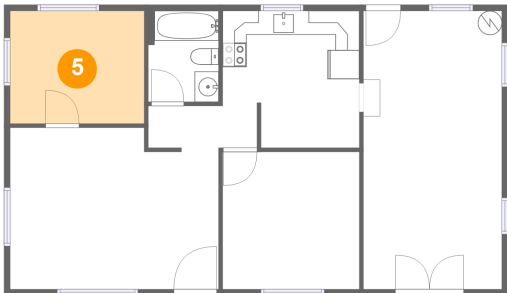
4 Floor 1 - Family Room



Max Dimensions: 11'6" x 23'1"
Calculated Area: 265 sq. ft
Included: Yes

Heated: Yes
Finished: Yes
Enclosed: Yes
Contiguous: Yes
Permitted: Yes
Wet space: No
Addition: No
Conversion: No

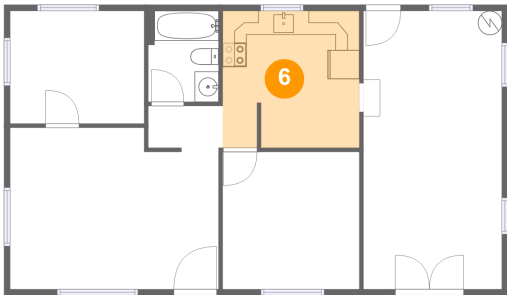
5 Floor 1 - Bedroom



Max Dimensions: 11'1" x 9'4"
Calculated Area: 104 sq. ft
Included: Yes

Heated: Yes
Finished: Yes
Enclosed: Yes
Contiguous: Yes
Permitted: Yes
Wet space: No
Addition: No
Conversion: No

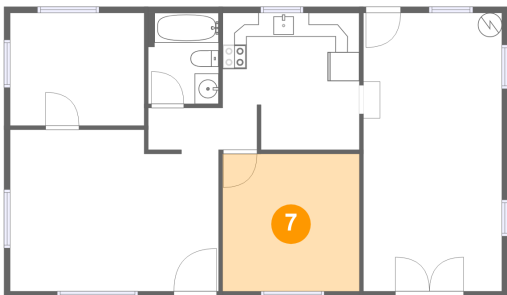
6 Floor 1 - Kitchen



Max Dimensions: 11'4" x 11'4"
Calculated Area: 127 sq. ft
Included: Yes

Heated: Yes
Finished: Yes
Enclosed: Yes
Contiguous: Yes
Permitted: Yes
Wet space: No
Addition: No
Conversion: No

7 Floor 1 - Primary Bedroom



Max Dimensions: 11'4" x 11'5"
Calculated Area: 129 sq. ft
Included: Yes

Heated: Yes
Finished: Yes
Enclosed: Yes
Contiguous: Yes
Permitted: Yes
Wet space: No
Addition: No
Conversion: No