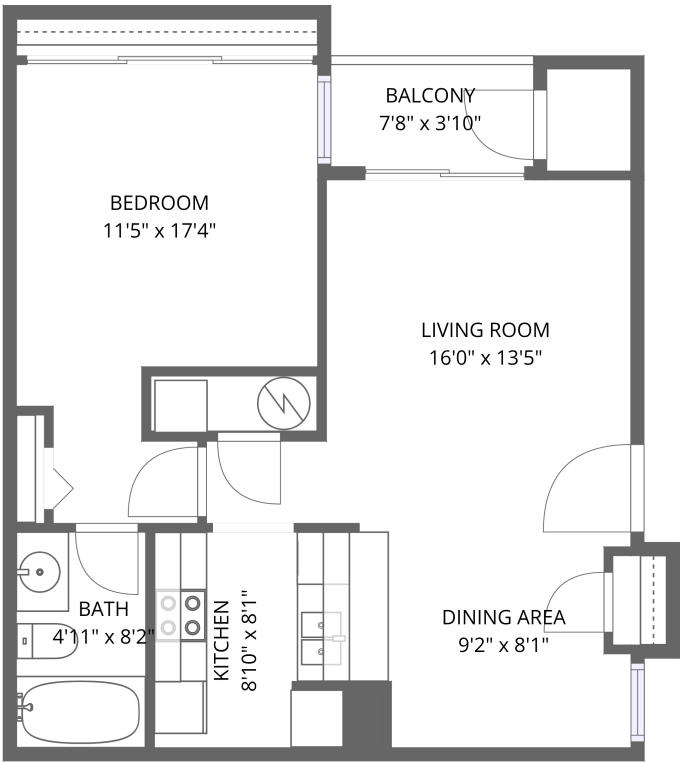


Home report

941 Mejia # 825,Santa Fe,NM,US



FLOOR 1

Total Area: 560 sq. ft
Floor 1: 560 sq. ft
Excluded: Undefined 26 sq. ft, Balcony 30 sq. ft, Walls: 0 sq. ft

Property summary

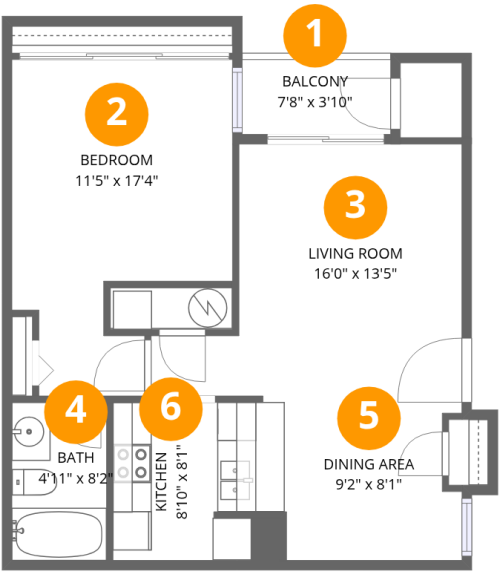
 **1** Floors

 **1** Bedrooms

 **1** Bathrooms

Home report

941 Mejia # 825,Santa Fe,NM,US

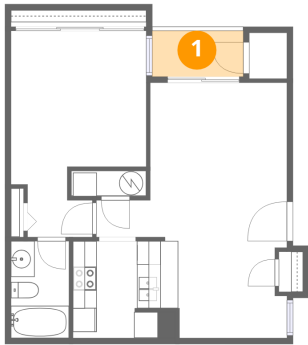


Room dimensions

Floor 1 Total:560sqft Excluded: 56sqft

#		Max Dimensions	sqft	Included
1	Balcony	7'8" x 3'10"	30 sq. ft	No
2	Bedroom	11'5" x 17'4"	158 sq. ft	Yes
3	Living Room	16'0" x 13'5"	167 sq. ft	Yes
4	Bath	4'11" x 8'2"	40 sq. ft	Yes
5	Dining Area	9'2" x 8'1"	70 sq. ft	Yes
6	Kitchen	8'10" x 8'1"	70 sq. ft	Yes

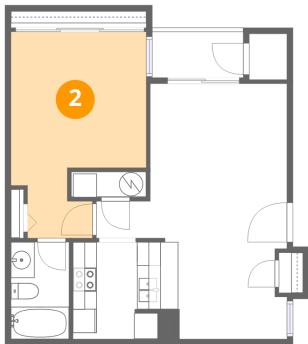
1 Floor 1 - Balcony



Max Dimensions: 7'8" x 3'10"
Calculated Area: 30 sq. ft
Included: No

Heated: No
Finished: No
Enclosed: No
Contiguous: Yes
Permitted: Yes
Wet space: No
Addition: No
Conversion: No

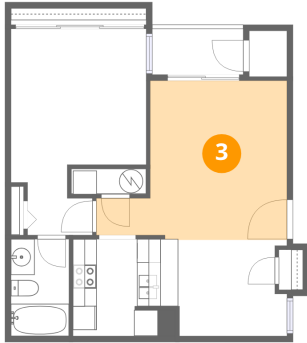
2 Floor 1 - Bedroom



Max Dimensions: 11'5" x 17'4"
Calculated Area: 158 sq. ft
Included: Yes

Heated: Yes
Finished: Yes
Enclosed: Yes
Contiguous: Yes
Permitted: Yes
Wet space: No
Addition: No
Conversion: No

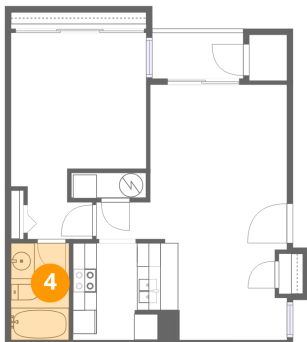
3 Floor 1 - Living Room



Max Dimensions: 16'0" x 13'5"
Calculated Area: 167 sq. ft
Included: Yes

Heated: Yes
Finished: Yes
Enclosed: Yes
Contiguous: Yes
Permitted: Yes
Wet space: No
Addition: No
Conversion: No

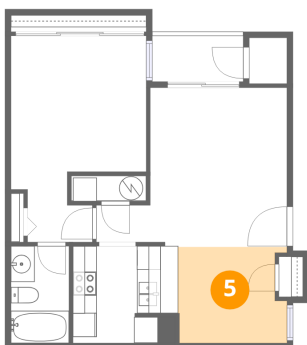
4 Floor 1 - Bath



Max Dimensions: 4'11" x 8'2"
Calculated Area: 40 sq. ft
Included: Yes

Heated: Yes
Finished: Yes
Enclosed: Yes
Contiguous: Yes
Permitted: Yes
Wet space: Yes
Addition: No
Conversion: No

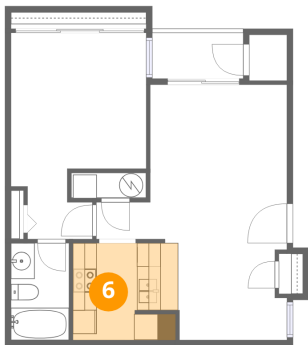
5 Floor 1 - Dining Area



Max Dimensions: 9'2" x 8'1"
Calculated Area: 70 sq. ft
Included: Yes

Heated: Yes
Finished: Yes
Enclosed: Yes
Contiguous: Yes
Permitted: Yes
Wet space: No
Addition: No
Conversion: No

6 Floor 1 - Kitchen



Max Dimensions: 8'10" x 8'1"
Calculated Area: 70 sq. ft
Included: Yes

Heated: Yes
Finished: Yes
Enclosed: Yes
Contiguous: Yes
Permitted: Yes
Wet space: No
Addition: No
Conversion: No