



Measurement Report

Measurement Date	April 15, 2025
Client Name	Billy Redpath - RE/MAX Real Estate
Property Address	#306, 10179 105 St NW, Edmonton, AB
Property Type	Condo
Exterior Wall Thickness	N/A
Measurement Equipment	Laser

Floor Area Totals

	Level	Metric (m ²)	Imperial (ft ²)
Main Floor	1	103.67	1115.93
Total Above Ground RMS Area		103.67	1115.93

Room Dimensions

	Level	Metric (m)	Imperial (ft)
Living Room	1	6.07 x 4.16	19'11" x 13'8"
Dining Room	1	3.94 x 5.89	12'11" x 19'4"
Kitchen	1	4.87 x 4.21	15'12" x 13'10"
Primary Bedroom	1	4.29 x 4.63	14'1" x 15'2"

Bathroom Count

	Level	Pieces
Bathroom 1	1	2
Bathroom 2	1	4

Measuring Process

Measurements have been completed and verified using the RMS guidelines. Measurements were obtained using lasers for the interior areas.

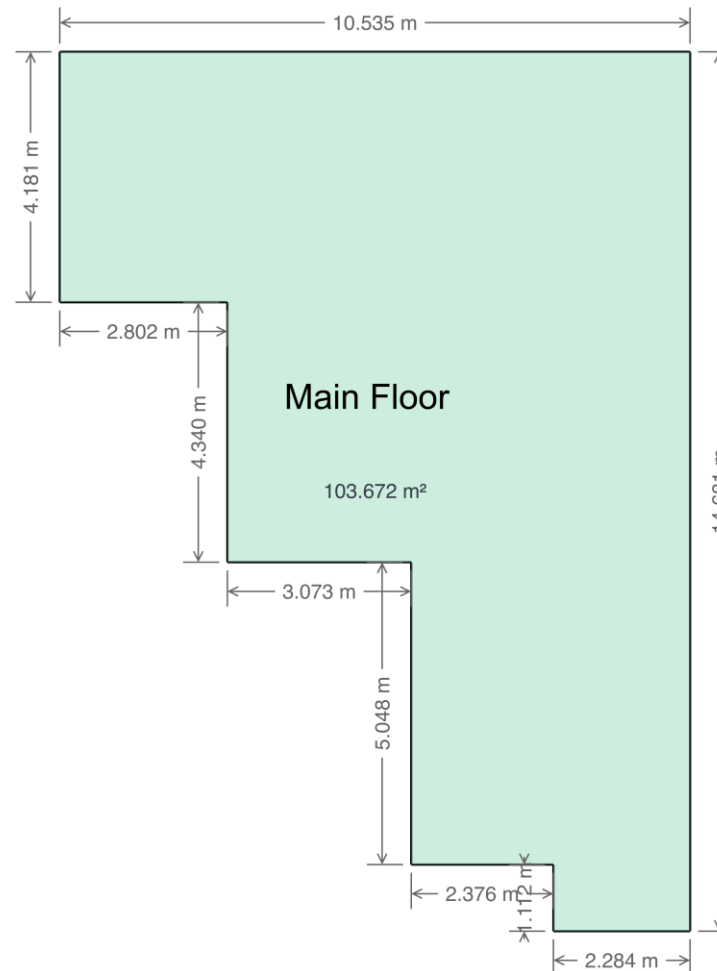
Room dimensions are largest length and width; parts of room may be smaller. Room area is not always equal to product of length and width.

587-566-6774

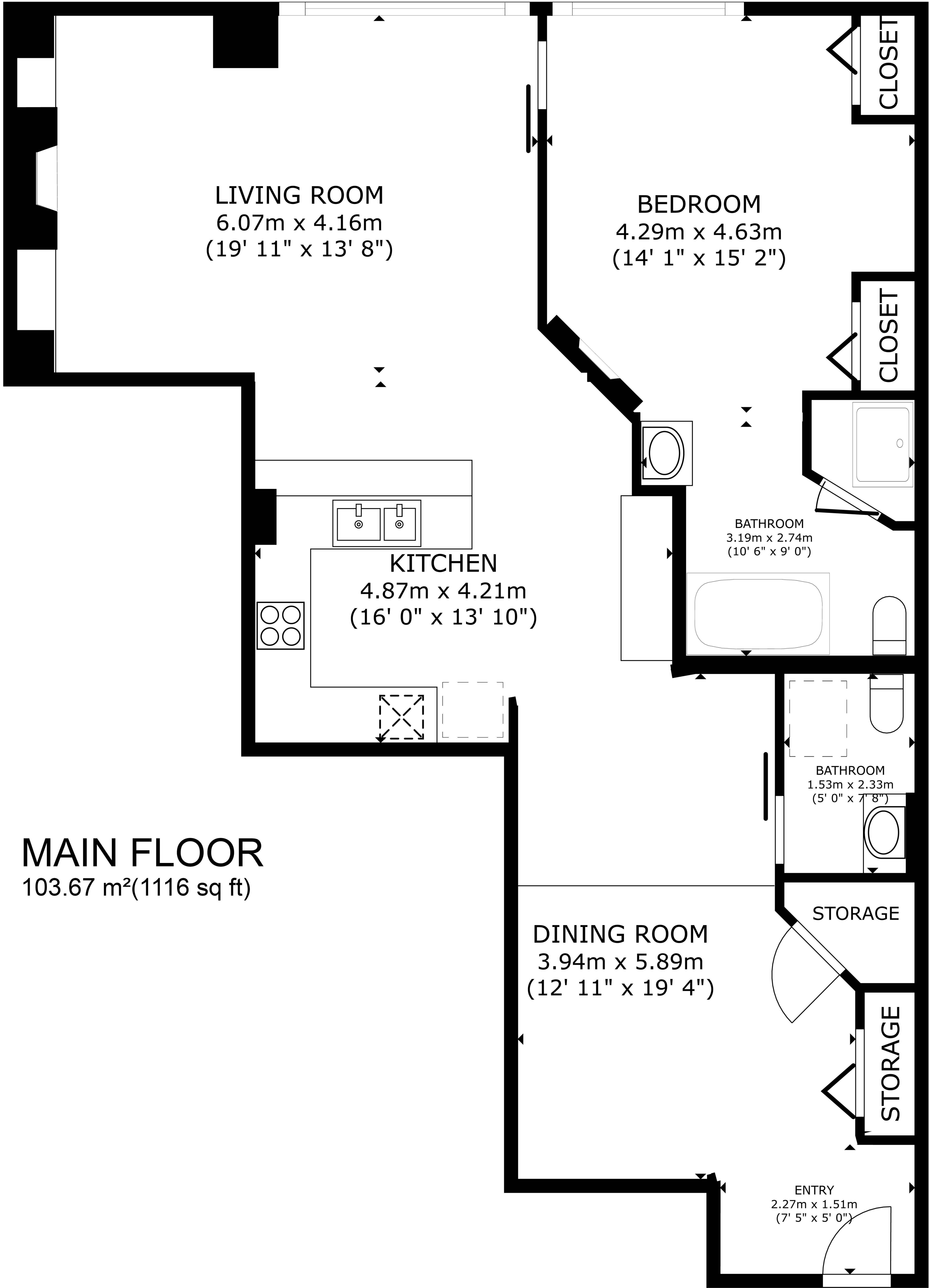
info@jcvisuals.ca

www.jcvisuals.ca

Schematics



#306-10179 105 ST NW
EDMONTON, AB



The floorplans and measurements are approximate within +/- 2% and are used for advertising usage only
May include unfinished area. Not suitable for architectural or construction use.