

Home report

964 East Duane Avenue, East Murphy, Sunnyvale, Santa Clara County, California, United States, 94085, 962



Total Area: 1998 sq. ft

Below Ground: 333 sq. ft, Floor 2: 832 sq. ft, Floor 3: 833 sq. ft

Excluded: Garage 430 sq. ft, Covered patio 83 sq. ft, Porch 69 sq. ft, Balcony 86 sq. ft, Walls: 154 sq. ft

Property summary

 **3** Floors

 **4** Bedrooms

 **3** Bathrooms

Home report

**964 East Duane Avenue, East Murphy, Sunnyvale, Santa Clara
County, California, United States, 94085, 962**



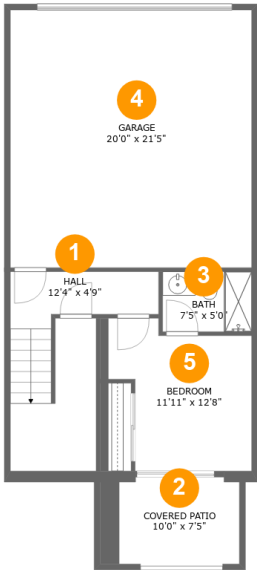
1
Half baths



1
Garages

Home report

964 East Duane Avenue, East Murphy, Sunnyvale, Santa Clara
County, California, United States, 94085, 962



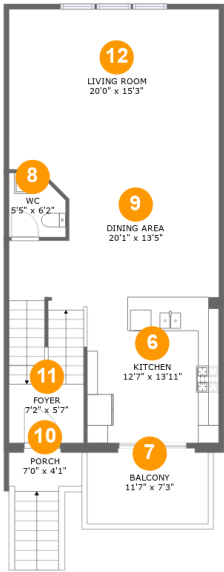
Room dimensions

Floor 1 Below ground Total:333sqft Excluded: 513sqft

#		Max Dimensions	sqft	Included
1	Hall	12'4" x 4'9"	133 sq. ft	Yes
2	Covered Patio	10'0" x 7'5"	83 sq. ft	No
3	Bath	7'5" x 5'0"	37 sq. ft	Yes
4	Garage	20'0" x 21'5"	430 sq. ft	No
5	Bedroom	11'11" x 12'8"	127 sq. ft	Yes

Home report

964 East Duane Avenue, East Murphy, Sunnyvale, Santa Clara County, California, United States, 94085, 962



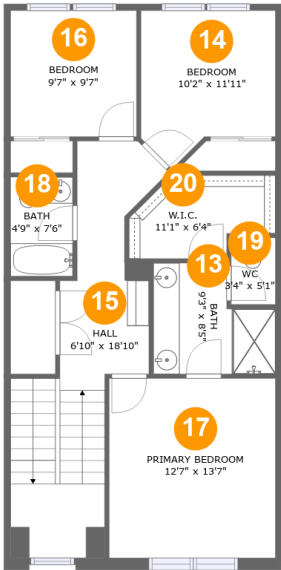
Room dimensions

Floor 2 Total:832sqft Excluded: 155sqft

#		Max Dimensions	sqft	Included
6	Kitchen	12'7" x 13'11"	176 sq. ft	Yes
7	Balcony	11'7" x 7'3"	86 sq. ft	No
8	WC	5'5" x 6'2"	30 sq. ft	Yes
9	Dining Area	20'1" x 13'5"	271 sq. ft	Yes
10	Porch	7'0" x 4'1"	69 sq. ft	No
11	Foyer	7'2" x 5'7"	40 sq. ft	Yes
12	Living Room	20'0" x 15'3"	307 sq. ft	Yes

Home report

964 East Duane Avenue, East Murphy, Sunnyvale, Santa Clara County, California, United States, 94085, 962



Room dimensions

Floor 3

Total:833sqft

Excluded: 0sqft

#		Max Dimensions	sqft	Included
13	Bath	9'3" x 8'5"	65 sq. ft	Yes
14	Bedroom	10'2" x 11'11"	103 sq. ft	Yes
15	Hall	6'10" x 18'10"	197 sq. ft	Yes
16	Bedroom	9'7" x 9'7"	91 sq. ft	Yes
17	Primary Bedroom	12'7" x 13'7"	171 sq. ft	Yes
18	Bath	4'9" x 7'6"	35 sq. ft	Yes
19	WC	3'4" x 5'1"	17 sq. ft	Yes
20	W.I.C.	11'1" x 6'4"	58 sq. ft	Yes

964 East Duane Avenue, East Murphy, Sunnyvale, Santa Clara
County, California, United States, 94085, 962

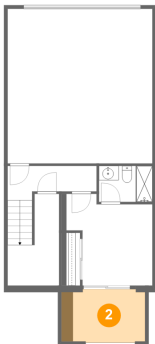
1 Floor 1 - Hall



Max Dimensions: 12'4" x 4'9"
Calculated Area: 133 sq. ft
Included: Yes

Heated: Yes
Finished: Yes
Enclosed: Yes
Contiguous: Yes
Permitted: Yes
Wet space: No
Addition: No
Conversion: No

2 Floor 1 - Covered Patio



Max Dimensions: 10'0" x 7'5"
Calculated Area: 83 sq. ft
Included: No

Heated: No
Finished: Yes
Enclosed: No
Contiguous: Yes
Permitted: Yes
Wet space: No
Addition: No
Conversion: No

964 East Duane Avenue, East Murphy, Sunnyvale, Santa Clara
County, California, United States, 94085, 962

3 Floor 1 - Bath



Max Dimensions: 7'5" x 5'0"
Calculated Area: 37 sq. ft
Included: Yes

Heated: Yes
Finished: Yes
Enclosed: Yes
Contiguous: Yes
Permitted: Yes
Wet space: Yes
Addition: No
Conversion: No

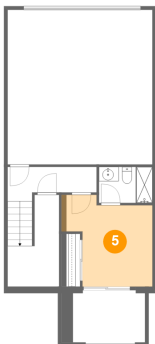
4 Floor 1 - Garage



Max Dimensions: 20'0" x 21'5"
Calculated Area: 430 sq. ft
Included: No

Heated: No
Finished: No
Enclosed: Yes
Contiguous: Yes
Permitted: Yes
Wet space: No
Addition: No
Conversion: No

5 Floor 1 - Bedroom



Max Dimensions: 11'11" x 12'8"
Calculated Area: 127 sq. ft
Included: Yes

Heated: Yes
Finished: Yes
Enclosed: Yes
Contiguous: Yes
Permitted: Yes
Wet space: No
Addition: No
Conversion: No

964 East Duane Avenue, East Murphy, Sunnyvale, Santa Clara
County, California, United States, 94085, 962

6 Floor 2 - Kitchen



Max Dimensions: 12'7" x 13'11"
Calculated Area: 176 sq. ft
Included: Yes

Heated: Yes
Finished: Yes
Enclosed: Yes
Contiguous: Yes
Permitted: Yes
Wet space: No
Addition: No
Conversion: No

7 Floor 2 - Balcony



Max Dimensions: 11'7" x 7'3"
Calculated Area: 86 sq. ft
Included: No

Heated: No
Finished: Yes
Enclosed: No
Contiguous: Yes
Permitted: Yes
Wet space: No
Addition: No
Conversion: No

8 Floor 2 - WC



Max Dimensions: 5'5" x 6'2"
Calculated Area: 30 sq. ft
Included: Yes

Heated: Yes
Finished: Yes
Enclosed: Yes
Contiguous: Yes
Permitted: Yes
Wet space: Yes
Addition: No
Conversion: No

964 East Duane Avenue, East Murphy, Sunnyvale, Santa Clara County, California, United States, 94085, 962

9 Floor 2 - Dining Area



Max Dimensions: 20'1" x 13'5"
Calculated Area: 271 sq. ft
Included: Yes

Heated: Yes
Finished: Yes
Enclosed: Yes
Contiguous: Yes
Permitted: Yes
Wet space: No
Addition: No
Conversion: No

10 Floor 2 - Porch



Max Dimensions: 7'0" x 4'1"
Calculated Area: 69 sq. ft
Included: No

Heated: No
Finished: Yes
Enclosed: No
Contiguous: Yes
Permitted: Yes
Wet space: No
Addition: No
Conversion: No

11 Floor 2 - Foyer



Max Dimensions: 7'2" x 5'7"
Calculated Area: 40 sq. ft
Included: Yes

Heated: Yes
Finished: Yes
Enclosed: Yes
Contiguous: Yes
Permitted: Yes
Wet space: No
Addition: No
Conversion: No

964 East Duane Avenue, East Murphy, Sunnyvale, Santa Clara
County, California, United States, 94085, 962

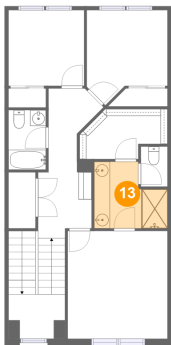
12 Floor 2 - Living Room



Max Dimensions: 20'0" x 15'3"
Calculated Area: 307 sq. ft
Included: Yes

Heated: Yes
Finished: Yes
Enclosed: Yes
Contiguous: Yes
Permitted: Yes
Wet space: No
Addition: No
Conversion: No

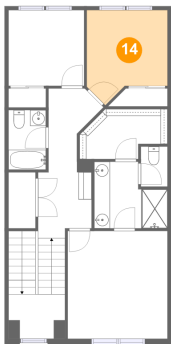
13 Floor 3 - Bath



Max Dimensions: 9'3" x 8'5"
Calculated Area: 65 sq. ft
Included: Yes

Heated: Yes
Finished: Yes
Enclosed: Yes
Contiguous: Yes
Permitted: Yes
Wet space: Yes
Addition: No
Conversion: No

14 Floor 3 - Bedroom

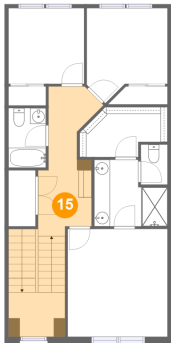


Max Dimensions: 10'2" x 11'11"
Calculated Area: 103 sq. ft
Included: Yes

Heated: Yes
Finished: Yes
Enclosed: Yes
Contiguous: Yes
Permitted: Yes
Wet space: No
Addition: No
Conversion: No

964 East Duane Avenue, East Murphy, Sunnyvale, Santa Clara
County, California, United States, 94085, 962

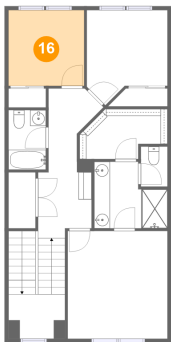
15 Floor 3 - Hall



Max Dimensions: 6'10" x 18'10"
Calculated Area: 197 sq. ft
Included: Yes

Heated: Yes
Finished: Yes
Enclosed: Yes
Contiguous: Yes
Permitted: Yes
Wet space: No
Addition: No
Conversion: No

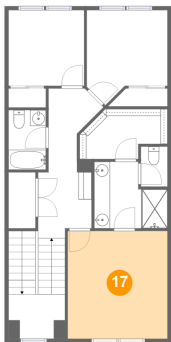
16 Floor 3 - Bedroom



Max Dimensions: 9'7" x 9'7"
Calculated Area: 91 sq. ft
Included: Yes

Heated: Yes
Finished: Yes
Enclosed: Yes
Contiguous: Yes
Permitted: Yes
Wet space: No
Addition: No
Conversion: No

17 Floor 3 - Primary Bedroom

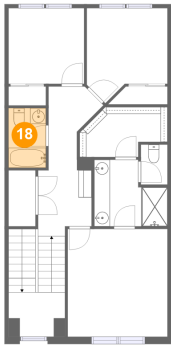


Max Dimensions: 12'7" x 13'7"
Calculated Area: 171 sq. ft
Included: Yes

Heated: Yes
Finished: Yes
Enclosed: Yes
Contiguous: Yes
Permitted: Yes
Wet space: No
Addition: No
Conversion: No

964 East Duane Avenue, East Murphy, Sunnyvale, Santa Clara
County, California, United States, 94085, 962

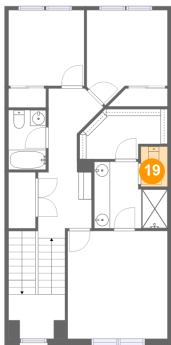
18 Floor 3 - Bath



Max Dimensions: 4'9" x 7'6"
Calculated Area: 35 sq. ft
Included: Yes

Heated: Yes
Finished: Yes
Enclosed: Yes
Contiguous: Yes
Permitted: Yes
Wet space: Yes
Addition: No
Conversion: No

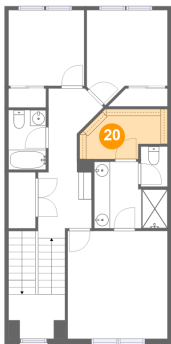
19 Floor 3 - WC



Max Dimensions: 3'4" x 5'1"
Calculated Area: 17 sq. ft
Included: Yes

Heated: Yes
Finished: Yes
Enclosed: Yes
Contiguous: Yes
Permitted: Yes
Wet space: Yes
Addition: No
Conversion: No

20 Floor 3 - W.I.C.



Max Dimensions: 11'1" x 6'4"
Calculated Area: 58 sq. ft
Included: Yes

Heated: Yes
Finished: Yes
Enclosed: Yes
Contiguous: Yes
Permitted: Yes
Wet space: No
Addition: No
Conversion: No