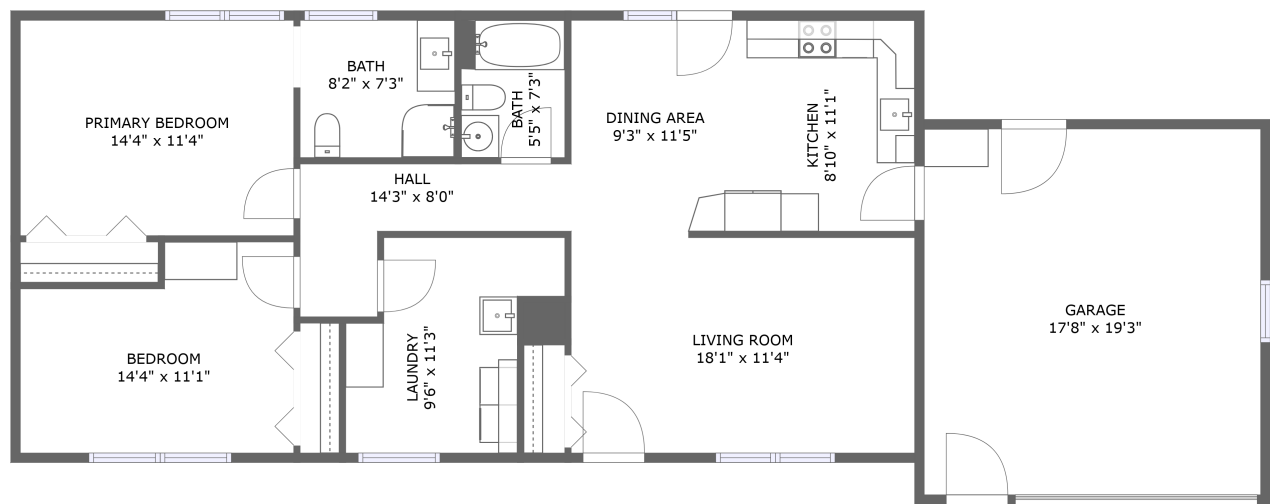


Home report

780 Whitney Road, Ontario, Wayne County, New York, United States, 14519



FLOOR 1

Total Area: 1070 sq. ft

Floor 1: 1070 sq. ft

Excluded: Garage 340 sq. ft, Walls: 98 sq. ft

Property summary



1 Floors



2 Bedrooms

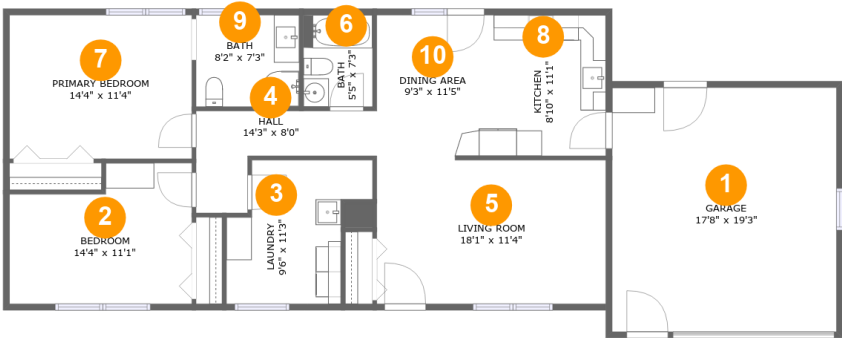


2 Bathrooms



1 Garages

780 Whitney Road, Ontario, Wayne County, New York, United States, 14519



Room dimensions

Floor 1 Total:1070sqft Excluded: 340sqft

#		Max Dimensions	sqft	Included
1	Garage	17'8" x 19'3"	340 sq. ft	No
2	Bedroom	14'4" x 11'1"	141 sq. ft	Yes
3	Laundry	9'6" x 11'3"	101 sq. ft	Yes
4	Hall	14'3" x 8'0"	69 sq. ft	Yes
5	Living Room	18'1" x 11'4"	204 sq. ft	Yes
6	Bath	5'5" x 7'3"	39 sq. ft	Yes
7	Primary Bedroom	14'4" x 11'4"	163 sq. ft	Yes
8	Kitchen	8'10" x 11'1"	98 sq. ft	Yes
9	Bath	8'2" x 7'3"	59 sq. ft	Yes
10	Dining Area	9'3" x 11'5"	104 sq. ft	Yes

780 Whitney Road, Ontario, Wayne County, New York, United States, 14519

1 Floor 1 - Garage



Max Dimensions: 17'8" x 19'3"
Calculated Area: 340 sq. ft
Included: No

Heated: No
Finished: No
Enclosed: Yes
Contiguous: Yes
Permitted: Yes
Wet space: No
Addition: No
Conversion: No

2 Floor 1 - Bedroom



Max Dimensions: 14'4" x 11'1"
Calculated Area: 141 sq. ft
Included: Yes

Heated: Yes
Finished: Yes
Enclosed: Yes
Contiguous: Yes
Permitted: Yes
Wet space: No
Addition: No
Conversion: No

780 Whitney Road, Ontario, Wayne County, New York, United States, 14519

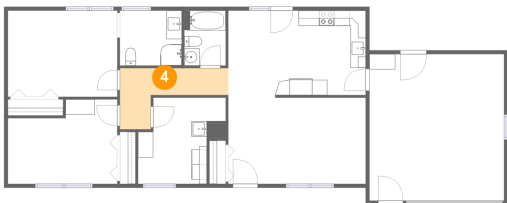
3 Floor 1 - Laundry



Max Dimensions: 9'6" x 11'3"
Calculated Area: 101 sq. ft
Included: Yes

Heated: Yes
Finished: Yes
Enclosed: Yes
Contiguous: Yes
Permitted: Yes
Wet space: No
Addition: No
Conversion: No

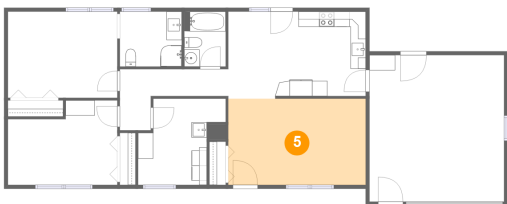
4 Floor 1 - Hall



Max Dimensions: 14'3" x 8'0"
Calculated Area: 69 sq. ft
Included: Yes

Heated: Yes
Finished: Yes
Enclosed: Yes
Contiguous: Yes
Permitted: Yes
Wet space: No
Addition: No
Conversion: No

5 Floor 1 - Living Room

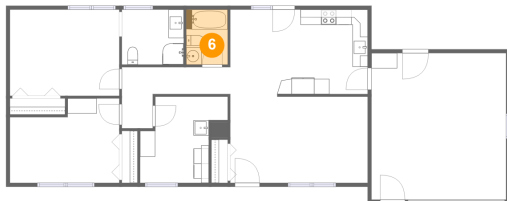


Max Dimensions: 18'1" x 11'4"
Calculated Area: 204 sq. ft
Included: Yes

Heated: Yes
Finished: Yes
Enclosed: Yes
Contiguous: Yes
Permitted: Yes
Wet space: No
Addition: No
Conversion: No

780 Whitney Road, Ontario, Wayne County, New York, United States, 14519

6 Floor 1 - Bath



Max Dimensions: 5'5" x 7'3"
Calculated Area: 39 sq. ft
Included: Yes

Heated: Yes
Finished: Yes
Enclosed: Yes
Contiguous: Yes
Permitted: Yes
Wet space: Yes
Addition: No
Conversion: No

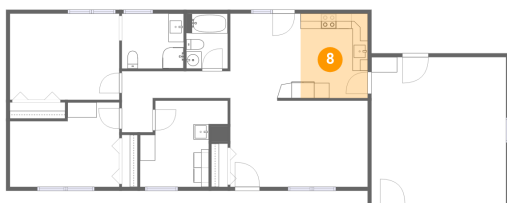
7 Floor 1 - Primary Bedroom



Max Dimensions: 14'4" x 11'4"
Calculated Area: 163 sq. ft
Included: Yes

Heated: Yes
Finished: Yes
Enclosed: Yes
Contiguous: Yes
Permitted: Yes
Wet space: No
Addition: No
Conversion: No

8 Floor 1 - Kitchen



Max Dimensions: 8'10" x 11'1"
Calculated Area: 98 sq. ft
Included: Yes

Heated: Yes
Finished: Yes
Enclosed: Yes
Contiguous: Yes
Permitted: Yes
Wet space: No
Addition: No
Conversion: No

780 Whitney Road, Ontario, Wayne County, New York, United States, 14519

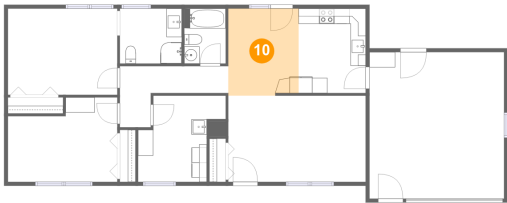
9 Floor 1 - Bath



Max Dimensions: 8'2" x 7'3"
Calculated Area: 59 sq. ft
Included: Yes

Heated: Yes
Finished: Yes
Enclosed: Yes
Contiguous: Yes
Permitted: Yes
Wet space: Yes
Addition: No
Conversion: No

10 Floor 1 - Dining Area



Max Dimensions: 9'3" x 11'5"
Calculated Area: 104 sq. ft
Included: Yes

Heated: Yes
Finished: Yes
Enclosed: Yes
Contiguous: Yes
Permitted: Yes
Wet space: No
Addition: No
Conversion: No