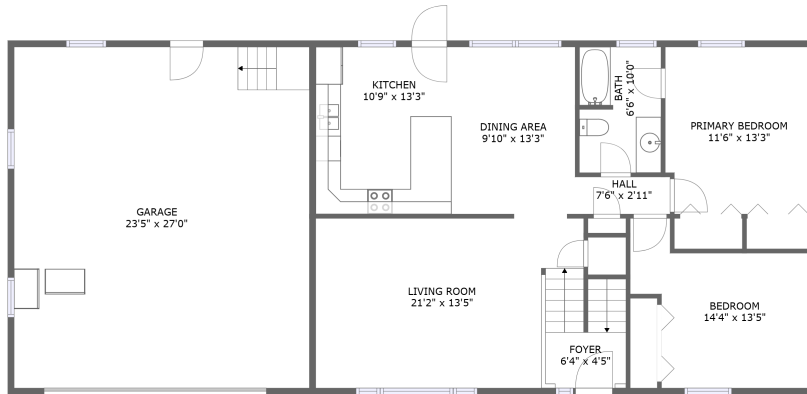
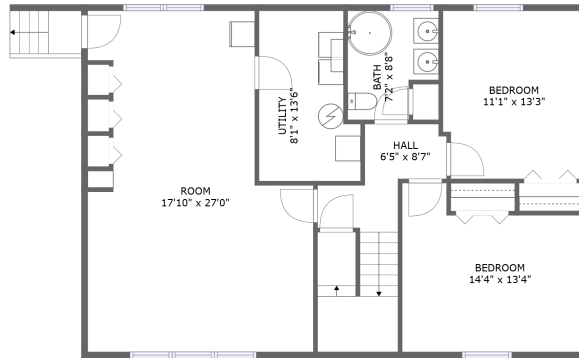


708 Wiltshire Dr, St Joseph, IL, US




FLOOR 2



FLOOR 1

Property summary


 **1** Garages

 **4** Bedrooms

 **2** Bathrooms

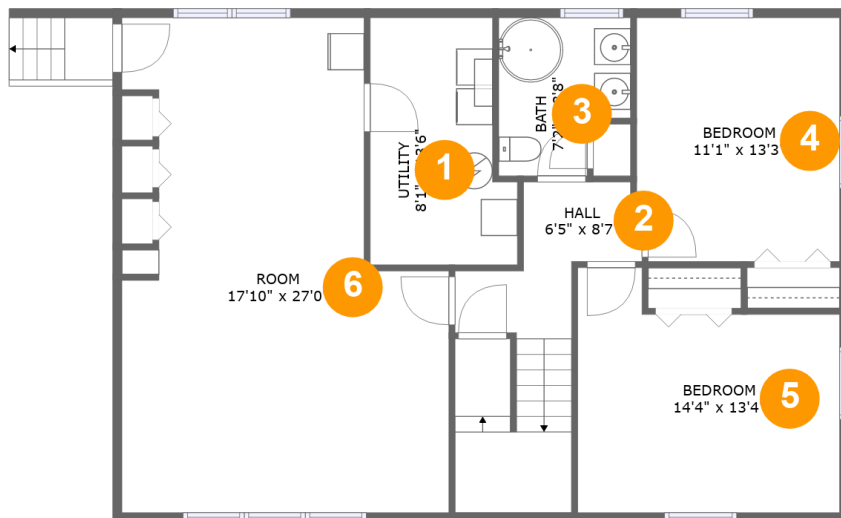
 **0** Half baths

 **2** Floors

 **2,178** Gross living area sqft

 **2,948** Total sqft

708 Wiltshire Dr, St Joseph, IL, US



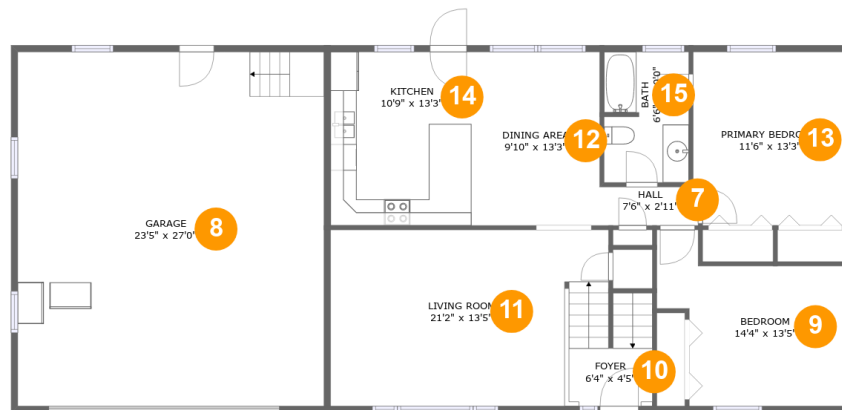
Room dimensions

Floor 1

Total sqft: 1150

Living area: 1050

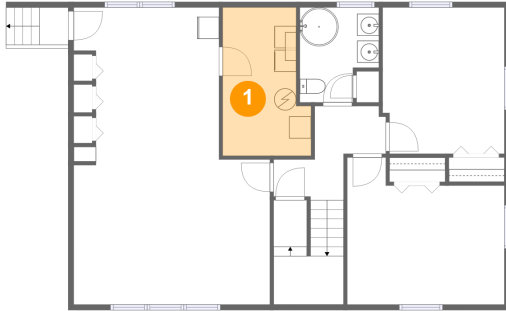
#		Dimensions	sqft	Counted as living area
1	Utility	8'1" x 13'6"	96 sq. ft	No
2	Hall	6'5" x 8'7"	110 sq. ft	Yes
3	Bath	7'2" x 8'8"	55 sq. ft	Yes
4	Bedroom	11'1" x 13'3"	145 sq. ft	Yes
5	Bedroom	14'4" x 13'4"	164 sq. ft	Yes
6	Room	17'10" x 27'0"	401 sq. ft	Yes

708 Wiltshire Dr, St Joseph, IL, US**Room dimensions****Floor 2****Total sqft: 1798 Living area: 1128**

#		Dimensions	sqft	Counted as living area
7	Hall	7'6" x 2'11"	22 sq. ft	Yes
8	Garage	23'5" x 27'0"	632 sq. ft	No
9	Bedroom	14'4" x 13'5"	143 sq. ft	Yes
10	Entry	6'4" x 4'5"	42 sq. ft	Yes
11	Living Room	21'2" x 13'5"	271 sq. ft	Yes
12	Dining Room	9'10" x 13'3"	130 sq. ft	Yes
13	Bedroom	11'6" x 13'3"	151 sq. ft	Yes
14	Kitchen	10'9" x 13'3"	142 sq. ft	Yes
15	Bath	6'6" x 10'0"	64 sq. ft	Yes

708 Wiltshire Dr, St Joseph, IL, US

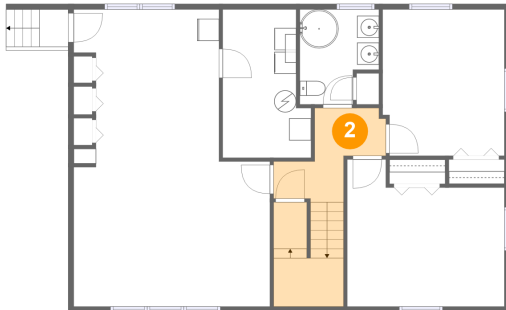
1 Floor 1 - Utility



Dimensions: 8'1" x 13'6"
Area: 96 sq. ft
Counted as living area: No

Heated: Yes
Finished: No
Enclosed: Yes
Contiguous: Yes
Permitted: Yes
Wet space: No
Addition: No
Conversion: No

2 Floor 1 - Hall

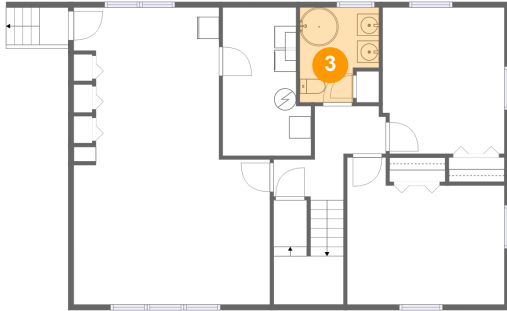


Dimensions: 6'5" x 8'7"
Area: 110 sq. ft
Counted as living area: Yes

Heated: Yes
Finished: Yes
Enclosed: Yes
Contiguous: Yes
Permitted: Yes
Wet space: No
Addition: No
Conversion: No

708 Wiltshire Dr, St Joseph, IL, US

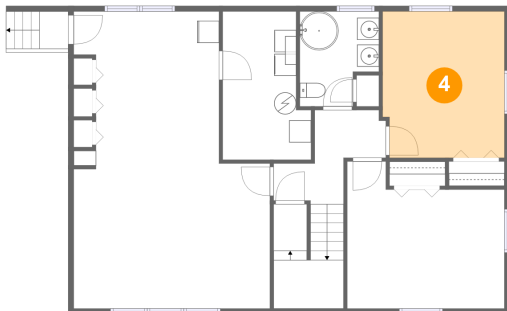
3 Floor 1 - Bath



Dimensions: 7'2" x 8'8"
Area: 55 sq. ft
Counted as living area: Yes

Heated: Yes
Finished: Yes
Enclosed: Yes
Contiguous: Yes
Permitted: Yes
Wet space: Yes
Addition: No
Conversion: No

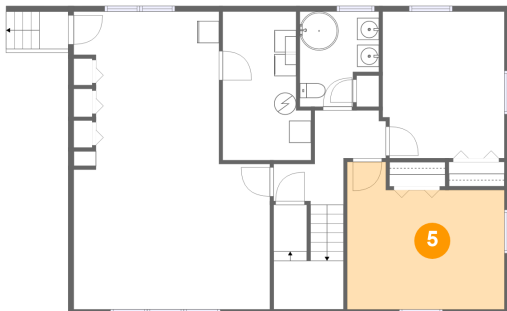
4 Floor 1 - Bedroom



Dimensions: 11'1" x 13'3"
Area: 145 sq. ft
Counted as living area: Yes

Heated: Yes
Finished: Yes
Enclosed: Yes
Contiguous: Yes
Permitted: Yes
Wet space: No
Addition: No
Conversion: No

5 Floor 1 - Bedroom

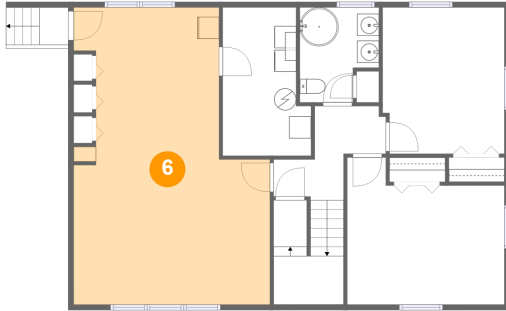


Dimensions: 14'4" x 13'4"
Area: 164 sq. ft
Counted as living area: Yes

Heated: Yes
Finished: Yes
Enclosed: Yes
Contiguous: Yes
Permitted: Yes
Wet space: No
Addition: No
Conversion: No

708 Wiltshire Dr, St Joseph, IL, US

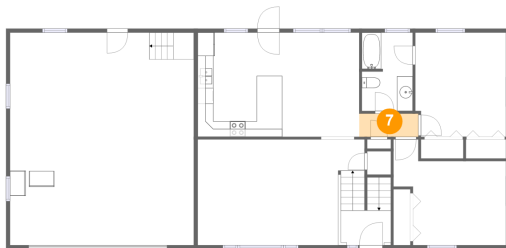
6 Floor 1 - Room



Dimensions: 17'10" x 27'0"
Area: 401 sq. ft
Counted as living area: Yes

Heated: Yes
Finished: Yes
Enclosed: Yes
Contiguous: Yes
Permitted: Yes
Wet space: No
Addition: No
Conversion: No

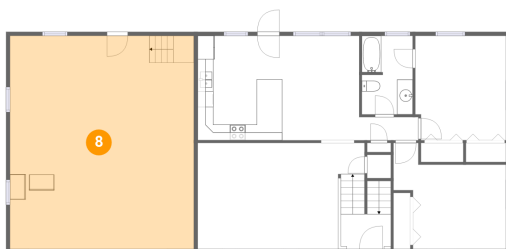
7 Floor 2 - Hall



Dimensions: 7'6" x 2'11"
Area: 22 sq. ft
Counted as living area: Yes

Heated: Yes
Finished: Yes
Enclosed: Yes
Contiguous: Yes
Permitted: Yes
Wet space: No
Addition: No
Conversion: No

8 Floor 2 - Garage

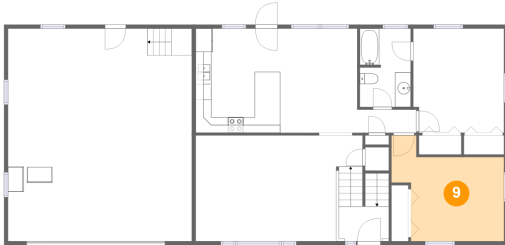


Dimensions: 23'5" x 27'0"
Area: 632 sq. ft
Counted as living area: No

Heated: No
Finished: No
Enclosed: Yes
Contiguous: Yes
Permitted: Yes
Wet space: No
Addition: No
Conversion: No

708 Wiltshire Dr, St Joseph, IL, US

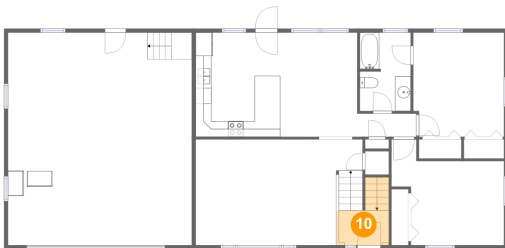
9 Floor 2 - Bedroom



Dimensions: 14'4" x 13'5"
Area: 143 sq. ft
Counted as living area: Yes

Heated: Yes
Finished: Yes
Enclosed: Yes
Contiguous: Yes
Permitted: Yes
Wet space: No
Addition: No
Conversion: No

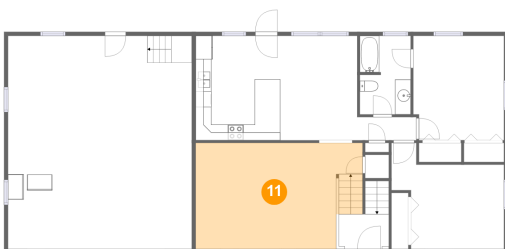
10 Floor 2 - Entry



Dimensions: 6'4" x 4'5"
Area: 42 sq. ft
Counted as living area: Yes

Heated: Yes
Finished: Yes
Enclosed: Yes
Contiguous: Yes
Permitted: Yes
Wet space: No
Addition: No
Conversion: No

11 Floor 2 - Living Room

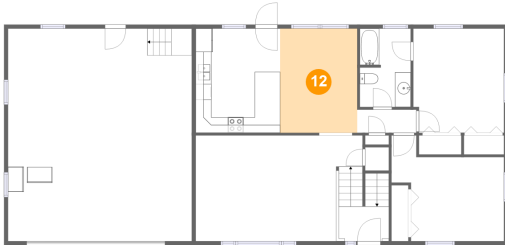


Dimensions: 21'2" x 13'5"
Area: 271 sq. ft
Counted as living area: Yes

Heated: Yes
Finished: Yes
Enclosed: Yes
Contiguous: Yes
Permitted: Yes
Wet space: No
Addition: No
Conversion: No

708 Wiltshire Dr, St Joseph, IL, US

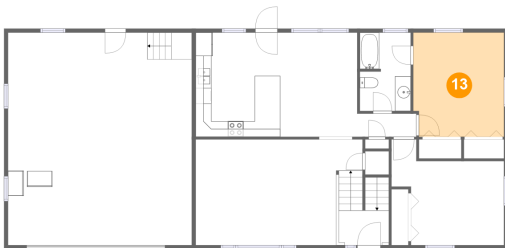
12 Floor 2 - Dining Room



Dimensions: 9'10" x 13'3"
Area: 130 sq. ft
Counted as living area: Yes

Heated: Yes
Finished: Yes
Enclosed: Yes
Contiguous: Yes
Permitted: Yes
Wet space: No
Addition: No
Conversion: No

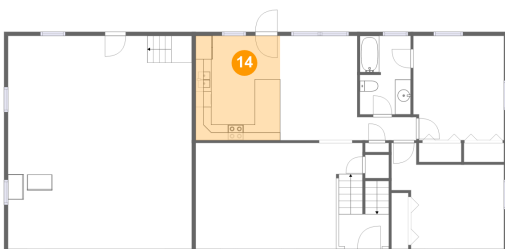
13 Floor 2 - Bedroom



Dimensions: 11'6" x 13'3"
Area: 151 sq. ft
Counted as living area: Yes

Heated: Yes
Finished: Yes
Enclosed: Yes
Contiguous: Yes
Permitted: Yes
Wet space: No
Addition: No
Conversion: No

14 Floor 2 - Kitchen

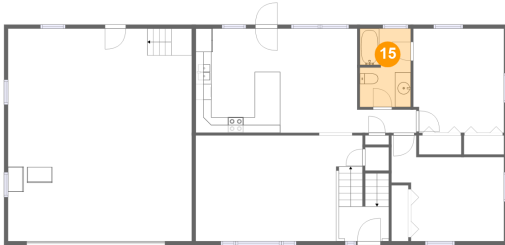


Dimensions: 10'9" x 13'3"
Area: 142 sq. ft
Counted as living area: Yes

Heated: Yes
Finished: Yes
Enclosed: Yes
Contiguous: Yes
Permitted: Yes
Wet space: No
Addition: No
Conversion: No

708 Wiltshire Dr, St Joseph, IL, US

15 Floor 2 - Bath



Dimensions: 6'6" x 10'0"
Area: 64 sq. ft
Counted as living area: Yes

Heated: Yes
Finished: Yes
Enclosed: Yes
Contiguous: Yes
Permitted: Yes
Wet space: Yes
Addition: No
Conversion: No