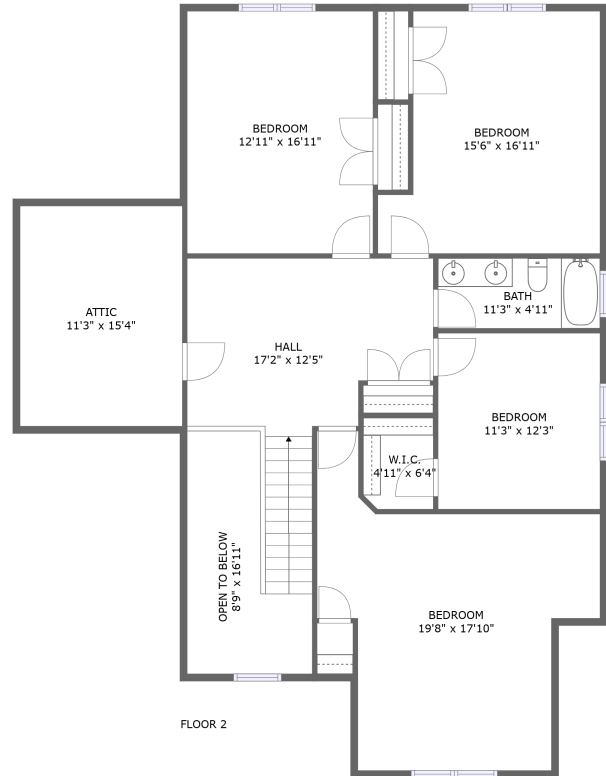
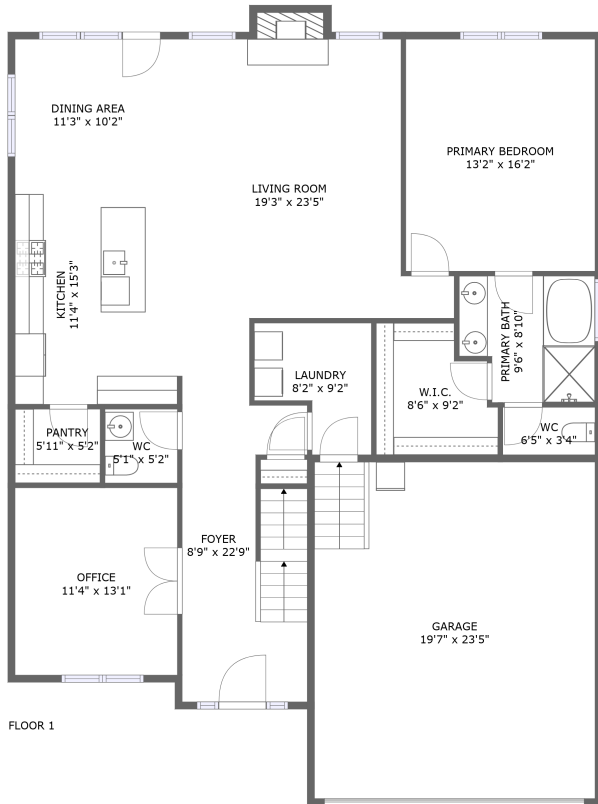



13031 Fieldfare Dr, Midlothian, VA, US



Property summary

 **1** Garages

 **5** Bedrooms

 **2** Bathrooms

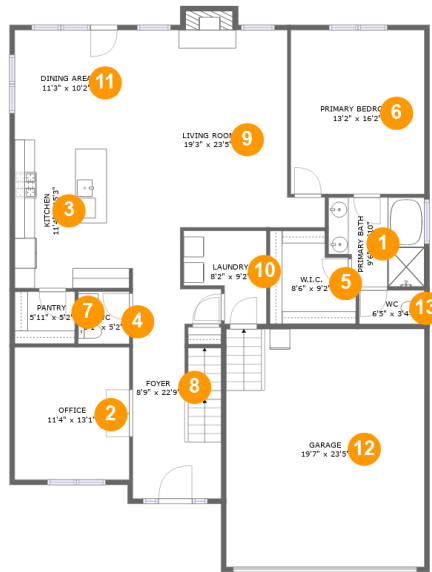
 **1** Half baths

 **2** Floors

 **2,903** Gross living area sqft

 **3,762** Total sqft

13031 Fieldfare Dr, Midlothian, VA, US



Room dimensions

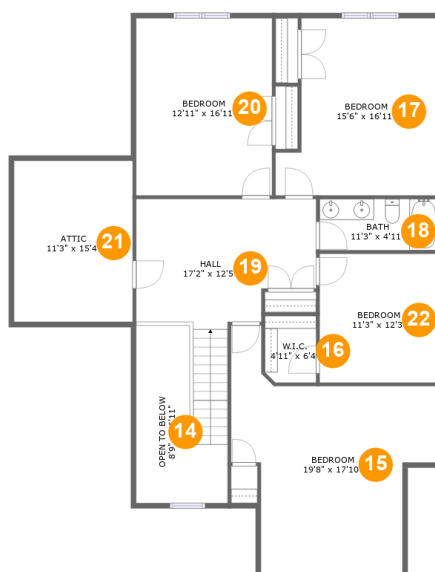
Floor 1

Total sqft: 2082 Living area: 1587

#		Dimensions	sqft	Counted as living area
1	Primary Bath	9'6" x 8'10"	76 sq. ft	Yes
2	Office	11'4" x 13'1"	148 sq. ft	Yes
3	Kitchen	11'4" x 15'3"	173 sq. ft	Yes
4	WC	5'1" x 5'2"	26 sq. ft	Yes
5	W.I.C.	8'6" x 9'2"	67 sq. ft	Yes
6	Primary Bedroom	13'2" x 16'2"	213 sq. ft	Yes
7	Pantry	5'11" x 5'2"	31 sq. ft	Yes
8	Foyer	8'9" x 22'9"	180 sq. ft	Yes
9	Living Room	19'3" x 23'5"	343 sq. ft	Yes
10	Laundry	8'2" x 9'2"	60 sq. ft	Yes
11	Dining Area	11'3" x 10'2"	115 sq. ft	Yes

13031 Fieldfare Dr, Midlothian, VA, US

#		Dimensions	sqft	Counted as living area
12	Garage	19'7" x 23'5"	459 sq. ft	No
13	WC	6'5" x 3'4"	21 sq. ft	Yes

13031 Fieldfare Dr, Midlothian, VA, US**Room dimensions**

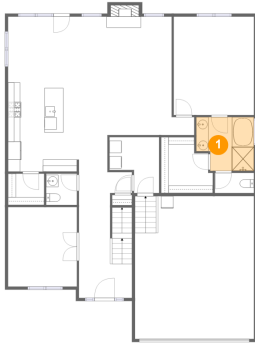
Floor 2

Total sqft: 1680 Living area: 1316

#		Dimensions	sqft	Counted as living area
14	Open To Below	8'9" x 16'11"	107 sq. ft	No
15	Bedroom	19'8" x 17'10"	264 sq. ft	Yes
16	W.I.C.	4'11" x 6'4"	31 sq. ft	Yes
17	Bedroom	15'6" x 16'11"	230 sq. ft	Yes
18	Bath	11'3" x 4'11"	55 sq. ft	Yes
19	Hall	17'2" x 12'5"	228 sq. ft	Yes
20	Bedroom	12'11" x 16'11"	219 sq. ft	Yes
21	Attic	11'3" x 15'4"	174 sq. ft	No
22	Bedroom	11'3" x 12'3"	139 sq. ft	Yes

13031 Fieldfare Dr, Midlothian, VA, US

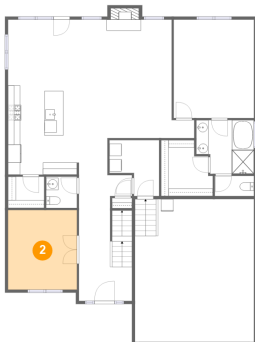
1 Floor 1 - Primary Bath



Dimensions: 9'6" x 8'10"
Area: 76 sq. ft
Counted as living area: Yes

Heated: Yes
Finished: Yes
Enclosed: Yes
Contiguous: Yes
Permitted: Yes
Wet space: Yes
Addition: No
Conversion: No

2 Floor 1 - Office

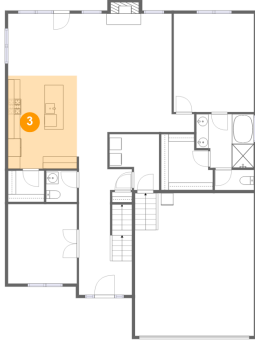


Dimensions: 11'4" x 13'1"
Area: 148 sq. ft
Counted as living area: Yes

Heated: Yes
Finished: Yes
Enclosed: Yes
Contiguous: Yes
Permitted: Yes
Wet space: No
Addition: No
Conversion: No

13031 Fieldfare Dr, Midlothian, VA, US

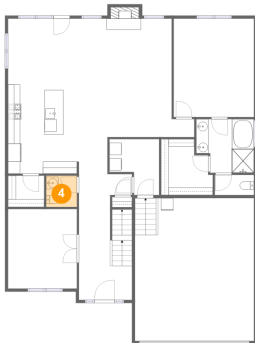
3 Floor 1 - Kitchen



Dimensions: 11'4" x 15'3"
Area: 173 sq. ft
Counted as living area: Yes

Heated: Yes
Finished: Yes
Enclosed: Yes
Contiguous: Yes
Permitted: Yes
Wet space: No
Addition: No
Conversion: No

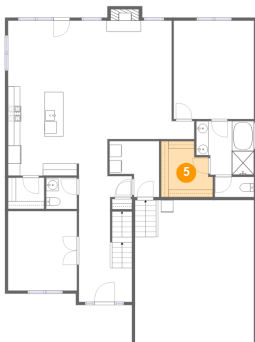
4 Floor 1 - WC



Dimensions: 5'1" x 5'2"
Area: 26 sq. ft
Counted as living area: Yes

Heated: Yes
Finished: Yes
Enclosed: Yes
Contiguous: Yes
Permitted: Yes
Wet space: Yes
Addition: No
Conversion: No

5 Floor 1 - W.I.C.

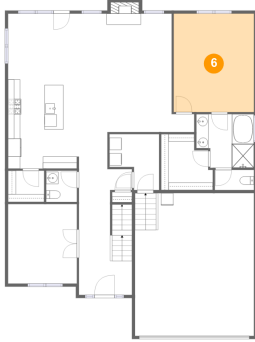


Dimensions: 8'6" x 9'2"
Area: 67 sq. ft
Counted as living area: Yes

Heated: Yes
Finished: Yes
Enclosed: Yes
Contiguous: Yes
Permitted: Yes
Wet space: No
Addition: No
Conversion: No

13031 Fieldfare Dr, Midlothian, VA, US

6 Floor 1 - Primary Bedroom



Dimensions: 13'2" x 16'2"
Area: 213 sq. ft
Counted as living area: Yes

Heated: Yes
Finished: Yes
Enclosed: Yes
Contiguous: Yes
Permitted: Yes
Wet space: No
Addition: No
Conversion: No

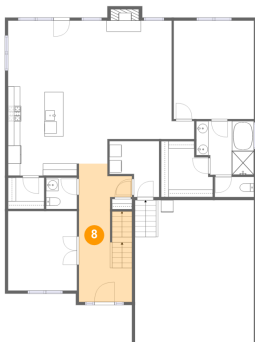
7 Floor 1 - Pantry



Dimensions: 5'11" x 5'2"
Area: 31 sq. ft
Counted as living area: Yes

Heated: Yes
Finished: Yes
Enclosed: Yes
Contiguous: Yes
Permitted: Yes
Wet space: No
Addition: No
Conversion: No

8 Floor 1 - Foyer

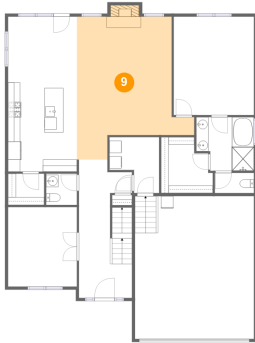


Dimensions: 8'9" x 22'9"
Area: 180 sq. ft
Counted as living area: Yes

Heated: Yes
Finished: Yes
Enclosed: Yes
Contiguous: Yes
Permitted: Yes
Wet space: No
Addition: No
Conversion: No

13031 Fieldfare Dr, Midlothian, VA, US

9 Floor 1 - Living Room



Dimensions: 19'3" x 23'5"
Area: 343 sq. ft
Counted as living area: Yes

Heated: Yes
Finished: Yes
Enclosed: Yes
Contiguous: Yes
Permitted: Yes
Wet space: No
Addition: No
Conversion: No

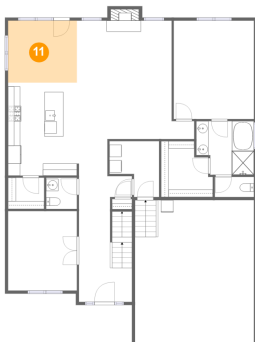
10 Floor 1 - Laundry



Dimensions: 8'2" x 9'2"
Area: 60 sq. ft
Counted as living area: Yes

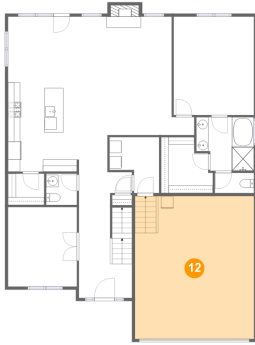
Heated: Yes
Finished: Yes
Enclosed: Yes
Contiguous: Yes
Permitted: Yes
Wet space: No
Addition: No
Conversion: No

11 Floor 1 - Dining Area



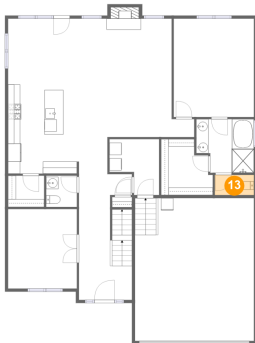
Dimensions: 11'3" x 10'2"
Area: 115 sq. ft
Counted as living area: Yes

Heated: Yes
Finished: Yes
Enclosed: Yes
Contiguous: Yes
Permitted: Yes
Wet space: No
Addition: No
Conversion: No

13031 Fieldfare Dr, Midlothian, VA, US**12 Floor 1 - Garage**

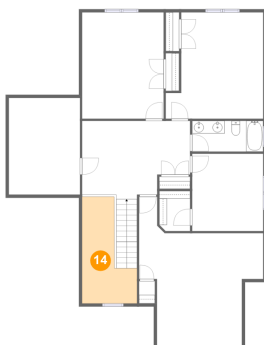
Dimensions: 19'7" x 23'5"
Area: 459 sq. ft
Counted as living area: No

Heated: No
Finished: No
Enclosed: Yes
Contiguous: Yes
Permitted: Yes
Wet space: No
Addition: No
Conversion: No

13 Floor 1 - WC

Dimensions: 6'5" x 3'4"
Area: 21 sq. ft
Counted as living area: Yes

Heated: Yes
Finished: Yes
Enclosed: Yes
Contiguous: Yes
Permitted: Yes
Wet space: Yes
Addition: No
Conversion: No

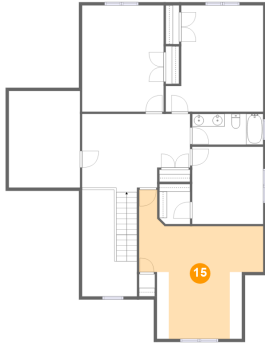
14 Floor 2 - Open To Below

Dimensions: 8'9" x 16'11"
Area: 107 sq. ft
Counted as living area: No

Heated: No
Finished: No
Enclosed: No
Contiguous: Yes
Permitted: No
Wet space: No
Addition: No
Conversion: No

13031 Fieldfare Dr, Midlothian, VA, US

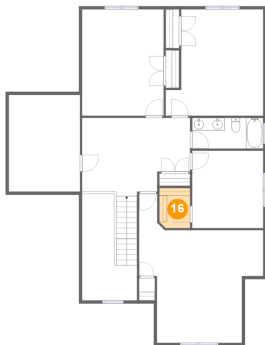
15 Floor 2 - Bedroom



Dimensions: 19'8" x 17'10"
Area: 264 sq. ft
Counted as living area: Yes

Heated: Yes
Finished: Yes
Enclosed: Yes
Contiguous: Yes
Permitted: Yes
Wet space: No
Addition: No
Conversion: No

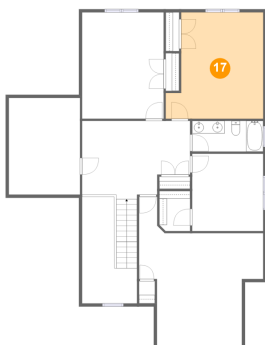
16 Floor 2 - W.I.C.



Dimensions: 4'11" x 6'4"
Area: 31 sq. ft
Counted as living area: Yes

Heated: Yes
Finished: Yes
Enclosed: Yes
Contiguous: Yes
Permitted: Yes
Wet space: No
Addition: No
Conversion: No

17 Floor 2 - Bedroom

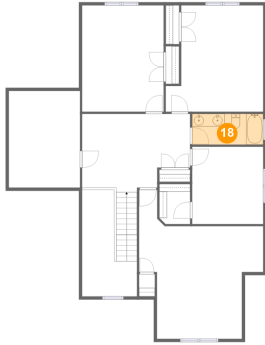


Dimensions: 15'6" x 16'11"
Area: 230 sq. ft
Counted as living area: Yes

Heated: Yes
Finished: Yes
Enclosed: Yes
Contiguous: Yes
Permitted: Yes
Wet space: No
Addition: No
Conversion: No

13031 Fieldfare Dr, Midlothian, VA, US

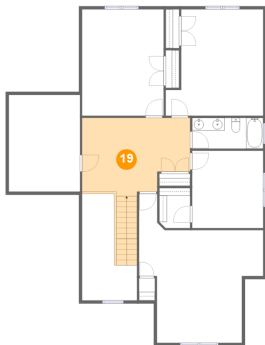
18 Floor 2 - Bath



Dimensions: 11'3" x 4'11"
Area: 55 sq. ft
Counted as living area: Yes

Heated: Yes
Finished: Yes
Enclosed: Yes
Contiguous: Yes
Permitted: Yes
Wet space: Yes
Addition: No
Conversion: No

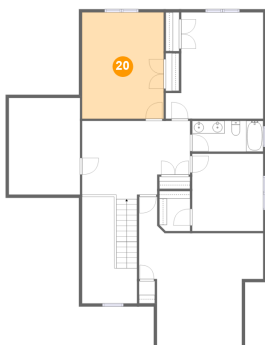
19 Floor 2 - Hall



Dimensions: 17'2" x 12'5"
Area: 228 sq. ft
Counted as living area: Yes

Heated: Yes
Finished: Yes
Enclosed: Yes
Contiguous: Yes
Permitted: Yes
Wet space: No
Addition: No
Conversion: No

20 Floor 2 - Bedroom

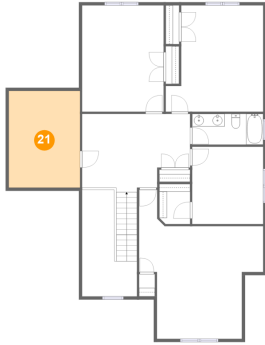


Dimensions: 12'11" x 16'11"
Area: 219 sq. ft
Counted as living area: Yes

Heated: Yes
Finished: Yes
Enclosed: Yes
Contiguous: Yes
Permitted: Yes
Wet space: No
Addition: No
Conversion: No

13031 Fieldfare Dr, Midlothian, VA, US

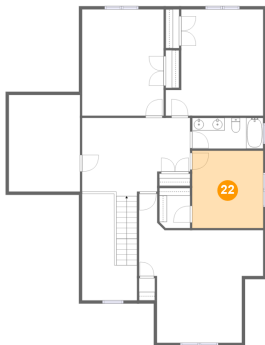
21 Floor 2 - Attic



Dimensions: 11'3" x 15'4"
Area: 174 sq. ft
Counted as living area: No

Heated: No
Finished: No
Enclosed: Yes
Contiguous: Yes
Permitted: Yes
Wet space: No
Addition: No
Conversion: No

22 Floor 2 - Bedroom



Dimensions: 11'3" x 12'3"
Area: 139 sq. ft
Counted as living area: Yes

Heated: Yes
Finished: Yes
Enclosed: Yes
Contiguous: Yes
Permitted: Yes
Wet space: No
Addition: No
Conversion: No