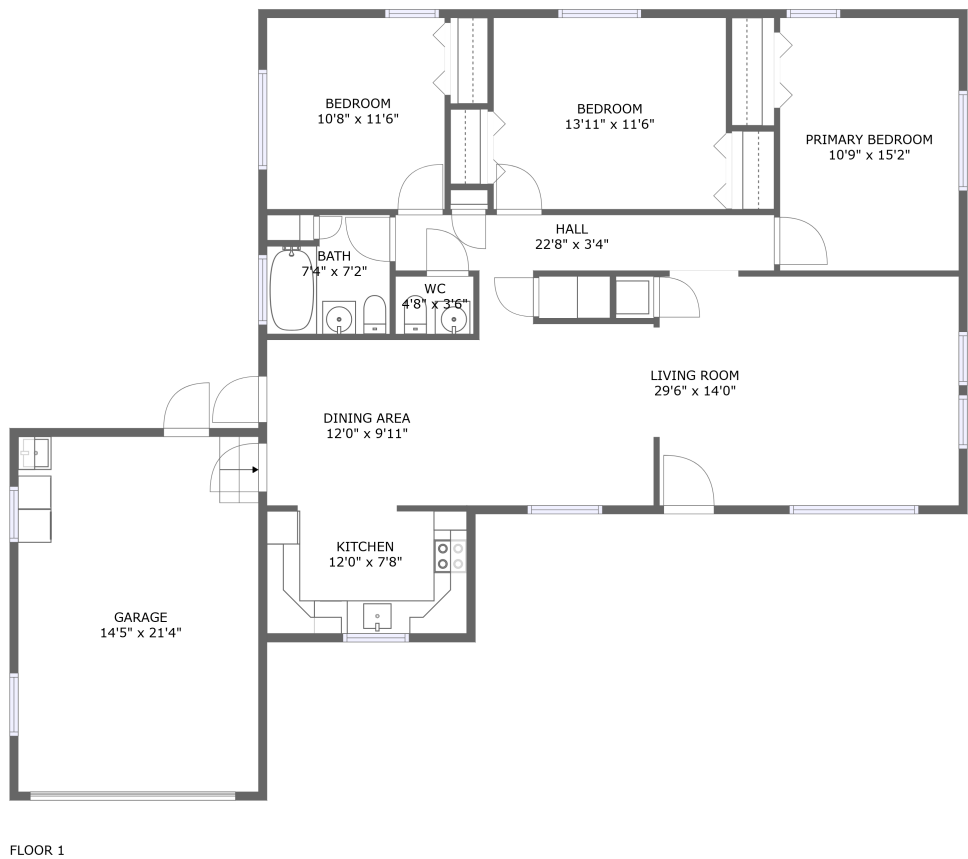


Home report

916 South Palm Drive Southwest, Lakeside Heights, Largo,
Pinellas County, Florida, United States, 33770




Total GLA: 1383 sq. ft

Floor 1: 1383 sq. ft

Excluded: Garage 337 sq. ft

Property summary

 1 Floors

 3 Bedrooms

 1 Bathrooms

Home report

**916 South Palm Drive Southwest, Lakeside Heights, Largo,
Pinellas County, Florida, United States, 33770**



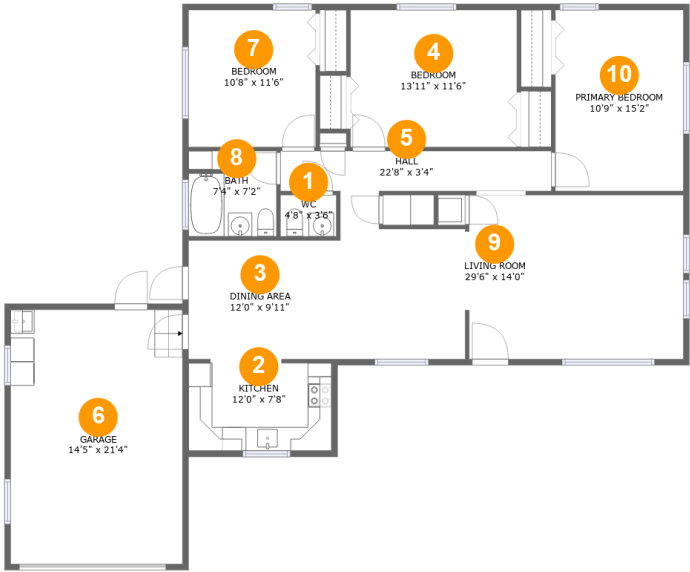
1
Half baths



1
Garages

Home report

916 South Palm Drive Southwest, Lakeside Heights, Largo,
Pinellas County, Florida, United States, 33770



Room dimensions

Floor 1 Total:1383sqft Excluded: 337sqft

#		Max Dimensions	sqft	Included
1	WC	4'8" x 3'6"	16 sq. ft	Yes
2	Kitchen	12'0" x 7'8"	90 sq. ft	Yes
3	Dining Area	12'0" x 9'11"	119 sq. ft	Yes
4	Bedroom	13'11" x 11'6"	160 sq. ft	Yes
5	Hall	22'8" x 3'4"	76 sq. ft	Yes
6	Garage	14'5" x 21'4"	307 sq. ft	No
7	Bedroom	10'8" x 11'6"	122 sq. ft	Yes
8	Bath	7'4" x 7'2"	47 sq. ft	Yes
9	Living Room	29'6" x 14'0"	380 sq. ft	Yes
10	Primary Bedroom	10'9" x 15'2"	163 sq. ft	Yes

916 South Palm Drive Southwest, Lakeside Heights, Largo,
Pinellas County, Florida, United States, 33770

1 Floor 1 - WC



Max Dimensions: 4'8" x 3'6"
Calculated Area: 16 sq. ft
Included: Yes

Heated: Yes
Finished: Yes
Enclosed: Yes
Contiguous: Yes
Permitted: Yes
Wet space: Yes
Addition: No
Conversion: No

2 Floor 1 - Kitchen



Max Dimensions: 12'0" x 7'8"
Calculated Area: 90 sq. ft
Included: Yes

Heated: Yes
Finished: Yes
Enclosed: Yes
Contiguous: Yes
Permitted: Yes
Wet space: No
Addition: No
Conversion: No

916 South Palm Drive Southwest, Lakeside Heights, Largo,
Pinellas County, Florida, United States, 33770

3 Floor 1 - Dining Area



Max Dimensions: 12'0" x 9'11"
Calculated Area: 119 sq. ft
Included: Yes

Heated: Yes
Finished: Yes
Enclosed: Yes
Contiguous: Yes
Permitted: Yes
Wet space: No
Addition: No
Conversion: No

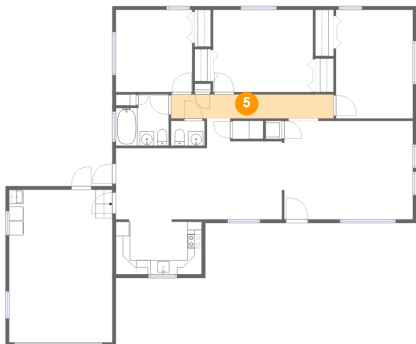
4 Floor 1 - Bedroom



Max Dimensions: 13'11" x 11'6"
Calculated Area: 160 sq. ft
Included: Yes

Heated: Yes
Finished: Yes
Enclosed: Yes
Contiguous: Yes
Permitted: Yes
Wet space: No
Addition: No
Conversion: No

5 Floor 1 - Hall

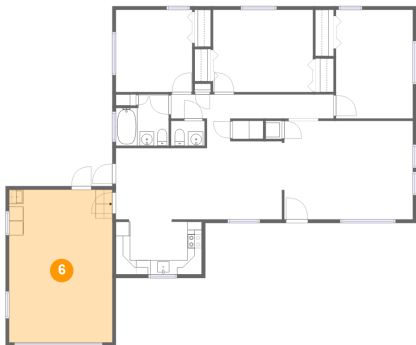


Max Dimensions: 22'8" x 3'4"
Calculated Area: 76 sq. ft
Included: Yes

Heated: Yes
Finished: Yes
Enclosed: Yes
Contiguous: Yes
Permitted: Yes
Wet space: No
Addition: No
Conversion: No

916 South Palm Drive Southwest, Lakeside Heights, Largo,
Pinellas County, Florida, United States, 33770

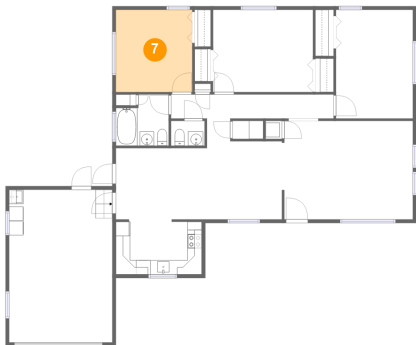
6 Floor 1 - Garage



Max Dimensions: 14'5" x 21'4"
Calculated Area: 307 sq. ft
Included: No

Heated: No
Finished: No
Enclosed: Yes
Contiguous: Yes
Permitted: Yes
Wet space: No
Addition: No
Conversion: No

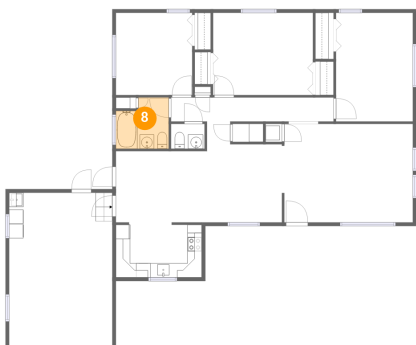
7 Floor 1 - Bedroom



Max Dimensions: 10'8" x 11'6"
Calculated Area: 122 sq. ft
Included: Yes

Heated: Yes
Finished: Yes
Enclosed: Yes
Contiguous: Yes
Permitted: Yes
Wet space: No
Addition: No
Conversion: No

8 Floor 1 - Bath

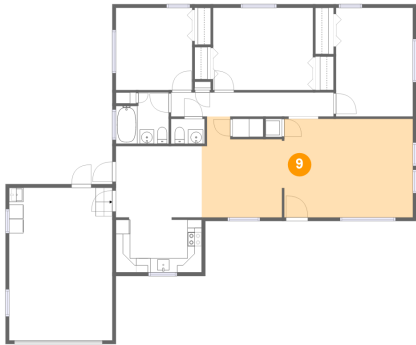


Max Dimensions: 7'4" x 7'2"
Calculated Area: 47 sq. ft
Included: Yes

Heated: Yes
Finished: Yes
Enclosed: Yes
Contiguous: Yes
Permitted: Yes
Wet space: Yes
Addition: No
Conversion: No

916 South Palm Drive Southwest, Lakeside Heights, Largo,
Pinellas County, Florida, United States, 33770

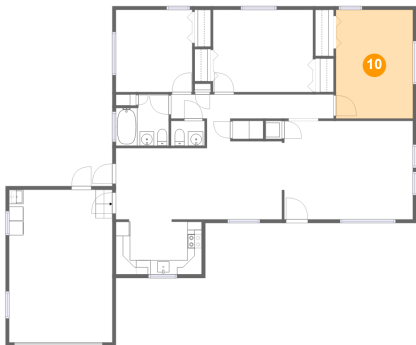
9 Floor 1 - Living Room



Max Dimensions: 29'6" x 14'0"
Calculated Area: 380 sq. ft
Included: Yes

Heated: Yes
Finished: Yes
Enclosed: Yes
Contiguous: Yes
Permitted: Yes
Wet space: No
Addition: No
Conversion: No

10 Floor 1 - Primary Bedroom



Max Dimensions: 10'9" x 15'2"
Calculated Area: 163 sq. ft
Included: Yes

Heated: Yes
Finished: Yes
Enclosed: Yes
Contiguous: Yes
Permitted: Yes
Wet space: No
Addition: No
Conversion: No