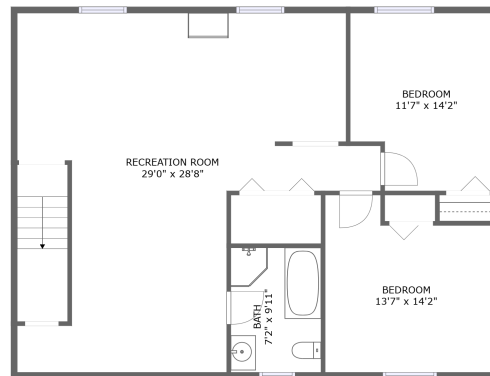
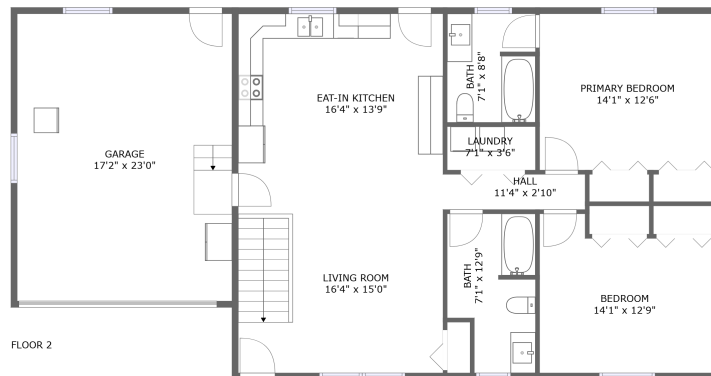



# 807 S 32nd St, Spearfish, SD, US



## Property summary


 **1** Garages

 **4** Bedrooms

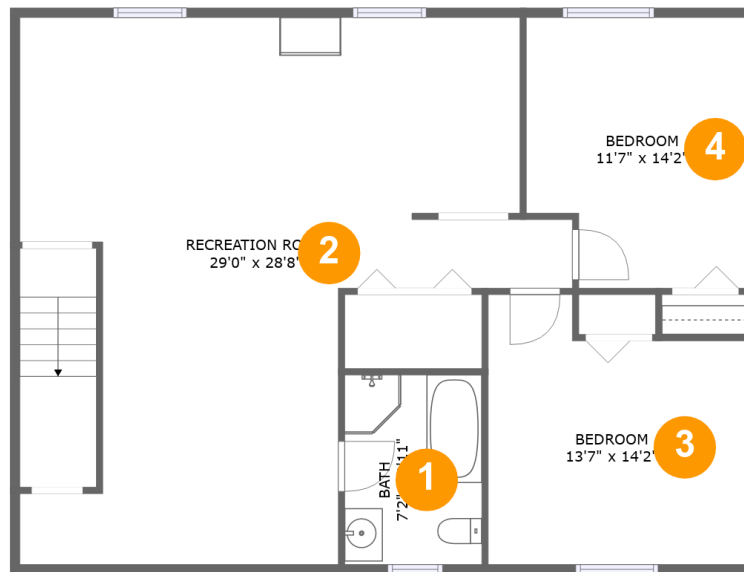
 **3** Bathrooms

 **0** Half baths

 **2** Floors

 **2,326**  
Gross living  
area sqft

 **2,749**  
Total sqft

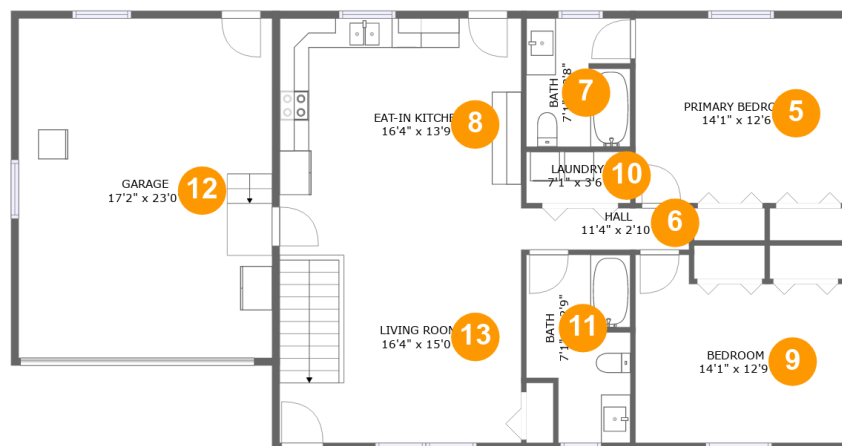
**807 S 32nd St, Spearfish, SD, US**

## Room dimensions

Floor 1

Total sqft: 1163 Living area: 1163

#		Dimensions	sqft	Counted as living area
1	Bath	7'2" x 9'11"	72 sq. ft	Yes
2	Recreation Room	29'0" x 28'8"	566 sq. ft	Yes
3	Bedroom	13'7" x 14'2"	170 sq. ft	Yes
4	Bedroom	11'7" x 14'2"	153 sq. ft	Yes

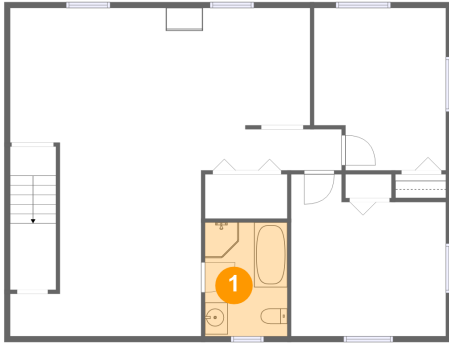
**807 S 32nd St, Spearfish, SD, US****Room dimensions**

Floor 2

Total sqft: 1586 Living area: 1163

#		Dimensions	sqft	Counted as living area
5	Primary Bedroom	14'1" x 12'6"	176 sq. ft	Yes
6	Hall	11'4" x 2'10"	32 sq. ft	Yes
7	Bath	7'1" x 8'8"	60 sq. ft	Yes
8	Eat-in Kitchen	16'4" x 13'9"	224 sq. ft	Yes
9	Bedroom	14'1" x 12'9"	159 sq. ft	Yes
10	Laundry	7'1" x 3'6"	25 sq. ft	Yes
11	Bath	7'1" x 12'9"	79 sq. ft	Yes
12	Garage	17'2" x 23'0"	394 sq. ft	No
13	Living Room	16'4" x 15'0"	245 sq. ft	Yes

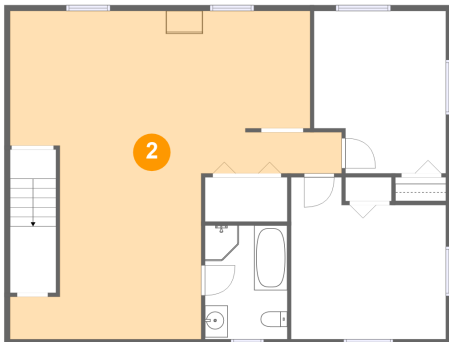
## 1 Floor 1 - Bath



Dimensions: 7'2" x 9'11"  
Area: 72 sq. ft  
Counted as living area: Yes

Heated: Yes  
Finished: Yes  
Enclosed: Yes  
Contiguous: Yes  
Permitted: Yes  
Wet space: Yes  
Addition: No  
Conversion: No

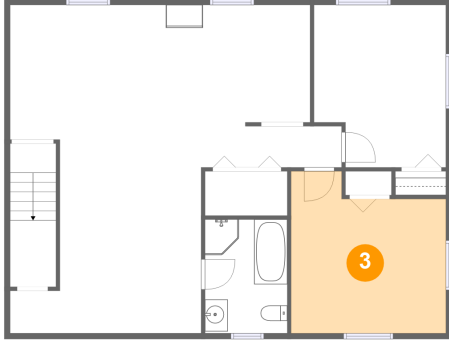
## 2 Floor 1 - Recreation Room



Dimensions: 29'0" x 28'8"  
Area: 566 sq. ft  
Counted as living area: Yes

Heated: Yes  
Finished: Yes  
Enclosed: Yes  
Contiguous: Yes  
Permitted: Yes  
Wet space: No  
Addition: No  
Conversion: No

**3** Floor 1 - Bedroom



Dimensions: 13'7" x 14'2"  
Area: 170 sq. ft  
Counted as living area: Yes

Heated: Yes  
Finished: Yes  
Enclosed: Yes  
Contiguous: Yes  
Permitted: Yes  
Wet space: No  
Addition: No  
Conversion: No

**4** Floor 1 - Bedroom



Dimensions: 11'7" x 14'2"  
Area: 153 sq. ft  
Counted as living area: Yes

Heated: Yes  
Finished: Yes  
Enclosed: Yes  
Contiguous: Yes  
Permitted: Yes  
Wet space: No  
Addition: No  
Conversion: No

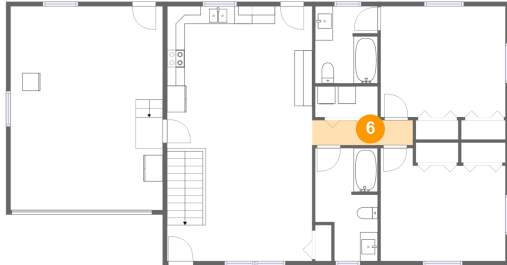
**5** Floor 2 - Primary Bedroom



Dimensions: 14'1" x 12'6"  
Area: 176 sq. ft  
Counted as living area: Yes

Heated: Yes  
Finished: Yes  
Enclosed: Yes  
Contiguous: Yes  
Permitted: Yes  
Wet space: No  
Addition: No  
Conversion: No

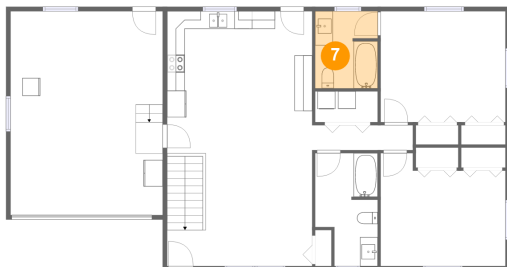
## 6 Floor 2 - Hall



Dimensions: 11'4" x 2'10"  
Area: 32 sq. ft  
Counted as living area: Yes

Heated: Yes  
Finished: Yes  
Enclosed: Yes  
Contiguous: Yes  
Permitted: Yes  
Wet space: No  
Addition: No  
Conversion: No

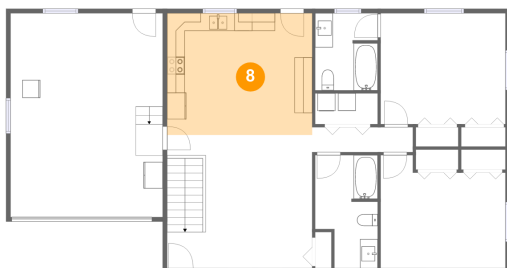
## 7 Floor 2 - Bath



Dimensions: 7'1" x 8'8"  
Area: 60 sq. ft  
Counted as living area: Yes

Heated: Yes  
Finished: Yes  
Enclosed: Yes  
Contiguous: Yes  
Permitted: Yes  
Wet space: Yes  
Addition: No  
Conversion: No

## 8 Floor 2 - Eat-in Kitchen



Dimensions: 16'4" x 13'9"  
Area: 224 sq. ft  
Counted as living area: Yes

Heated: Yes  
Finished: Yes  
Enclosed: Yes  
Contiguous: Yes  
Permitted: Yes  
Wet space: No  
Addition: No  
Conversion: No

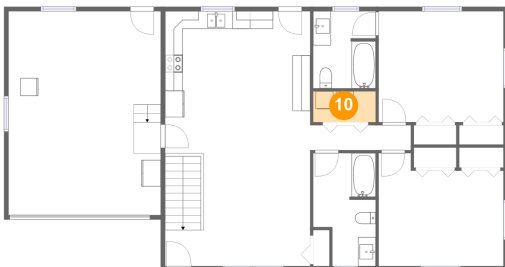
**9** Floor 2 - Bedroom



Dimensions: 14'1" x 12'9"  
Area: 159 sq. ft  
Counted as living area: Yes

Heated: Yes  
Finished: Yes  
Enclosed: Yes  
Contiguous: Yes  
Permitted: Yes  
Wet space: No  
Addition: No  
Conversion: No

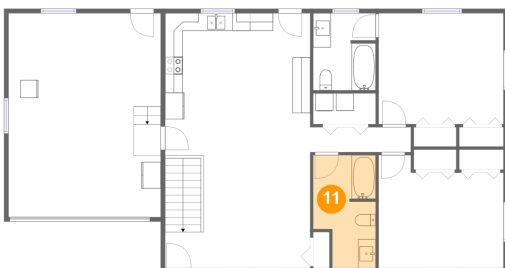
**10** Floor 2 - Laundry



Dimensions: 7'1" x 3'6"  
Area: 25 sq. ft  
Counted as living area: Yes

Heated: Yes  
Finished: Yes  
Enclosed: Yes  
Contiguous: Yes  
Permitted: Yes  
Wet space: No  
Addition: No  
Conversion: No

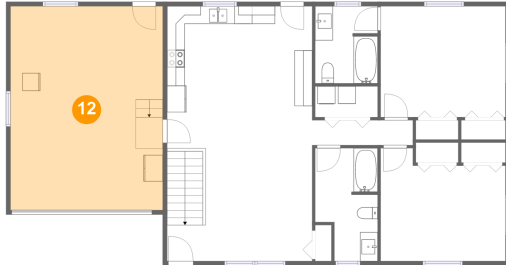
**11** Floor 2 - Bath



Dimensions: 7'1" x 12'9"  
Area: 79 sq. ft  
Counted as living area: Yes

Heated: Yes  
Finished: Yes  
Enclosed: Yes  
Contiguous: Yes  
Permitted: Yes  
Wet space: Yes  
Addition: No  
Conversion: No

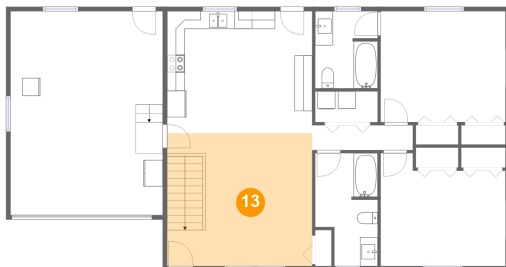
## 12 Floor 2 - Garage



Dimensions: 17'2" x 23'0"  
Area: 394 sq. ft  
Counted as living area: No

Heated: No  
Finished: No  
Enclosed: Yes  
Contiguous: Yes  
Permitted: Yes  
Wet space: No  
Addition: No  
Conversion: No

## 13 Floor 2 - Living Room



Dimensions: 16'4" x 15'0"  
Area: 245 sq. ft  
Counted as living area: Yes

Heated: Yes  
Finished: Yes  
Enclosed: Yes  
Contiguous: Yes  
Permitted: Yes  
Wet space: No  
Addition: No  
Conversion: No