



Date August 7, 2025
Address 11 Huntington Bay
City Spruce Grove
Agent Cara Kielstra-Buitenbos
Brokerage Century 21
Property Type Bi-Level

SKG Real Estate Media
 780.887.7491
 info@skgrealestatemedia.com

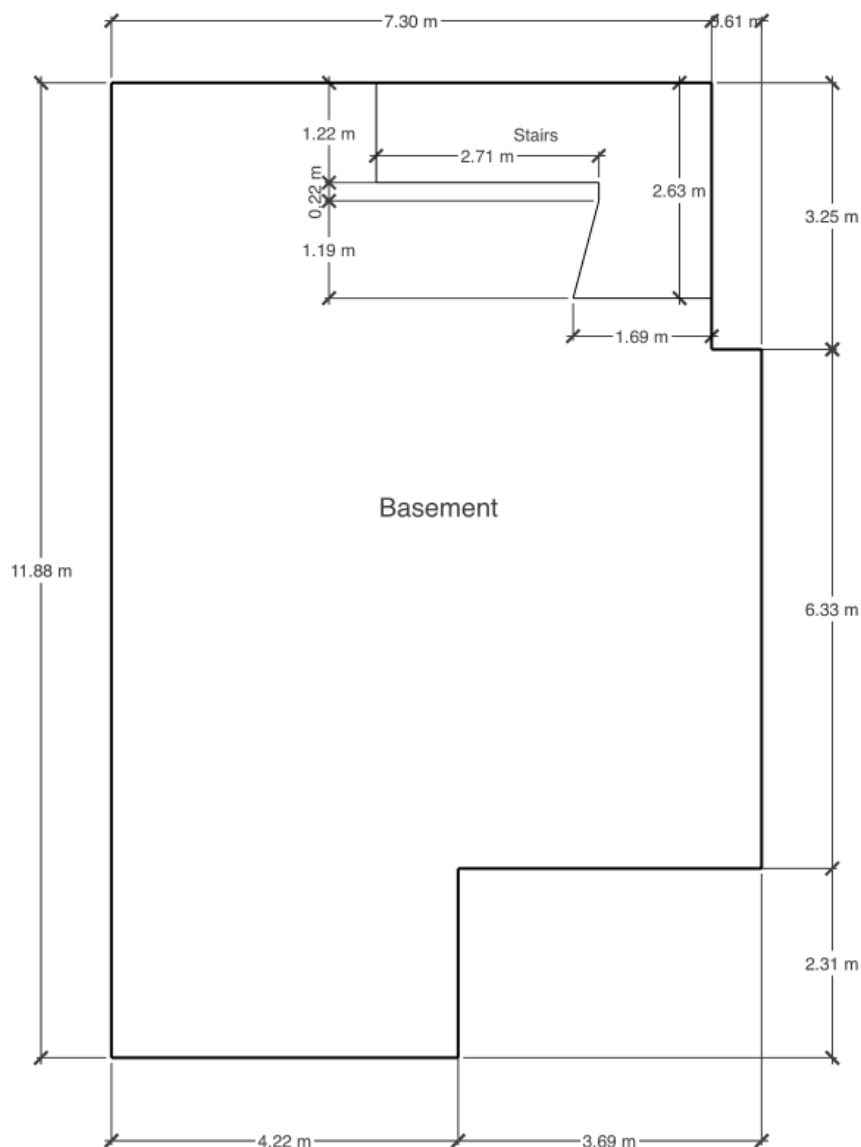
		Square Feet	Square Meters
2nd Level	Above Grade	351.12	32.62
Main Level	Above Grade	980.70	91.11
Basement	Below Grade	822.69	76.43
Total	Above Grade	1331.82	123.73

2nd Level	Feet	Meters
Primary Bedroom	12 ft, 8 in x 17 ft, 1 in	3.85 m x 5.20 m
Ensuite	9 ft, 7 in x 4 ft, 11 in	2.92 m x 1.51 m
WIC	5 ft, 0 in x 4 ft, 11 in	1.53 m x 1.50 m

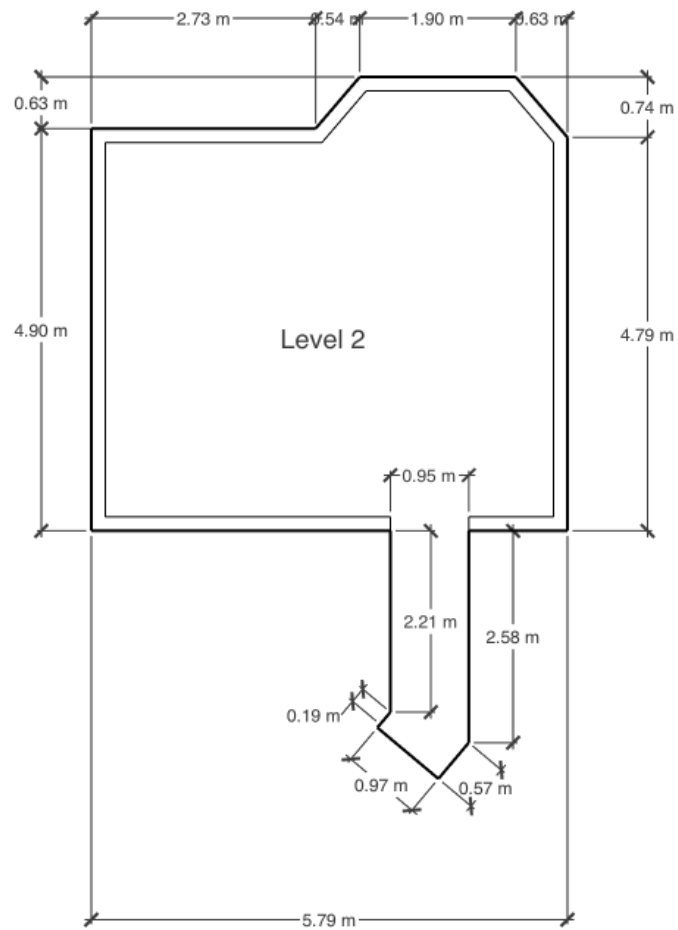
Main Level	Feet	Meters
Living Room	19 ft, 2 in x 15 ft, 3 in	5.83 m x 4.64 m
Dining Room	9 ft, 2 in x 11 ft, 0 in	2.79 m x 3.36 m
Kitchen	10 ft, 8 in x 13 ft, 4 in	3.26 m x 4.07 m
Bedroom 2	11 ft, 6 in x 8 ft, 4 in	3.50 m x 2.53 m
Bathroom	5 ft, 8 in x 10 ft, 4 in	1.74 m x 3.16 m
Garage	29 ft, 6 in x 33 ft, 0 in	8.99 m x 10.06 m

Basement	Feet	Meters
Family Room	20 ft, 1 in x 14 ft, 11 in	6.13 m x 4.56 m
Bedroom	9 ft, 11 in x 11 ft, 1 in	3.03 m x 3.39 m
Bedroom	9 ft, 6 in x 8 ft, 2 in	2.89 m x 2.48 m
Bathroom	7 ft, 11 in x 5 ft, 0 in	2.42 m x 1.53 m
Utility	12 ft, 2 in x 12 ft, 5 in	3.71 m x 3.78 m

11 Huntington Bay Spruce Grove



11 Huntington Bay Spruce Grove



11 Huntington Bay Spruce Grove

