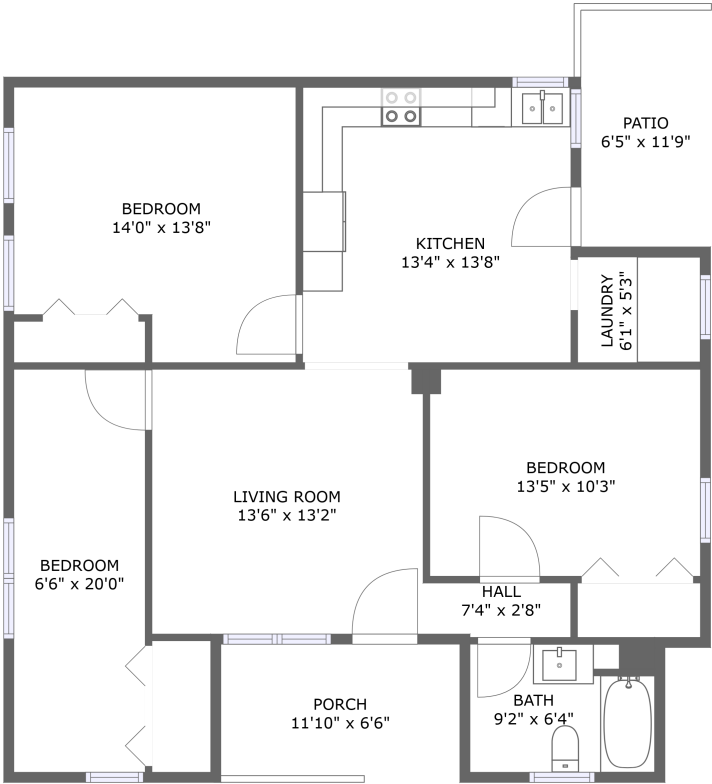


Home report

854 Den Hill Road, Ellett, Christiansburg, Montgomery County,
Virginia, United States, 24073



FLOOR 1


Total Area: 1002 sq. ft

Floor 1: 1002 sq. ft

Excluded: Porch 77 sq. ft, Patio 76 sq. ft, Walls: 76 sq. ft

Property summary

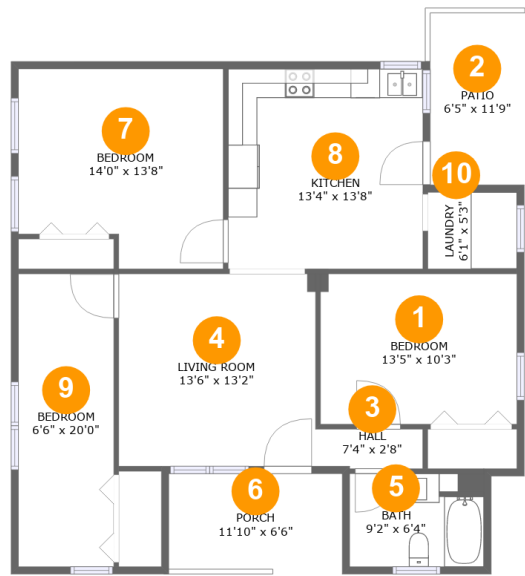
 1 Floors

 3 Bedrooms

 1 Bathrooms

Home report

854 Den Hill Road, Ellett, Christiansburg, Montgomery County,
Virginia, United States, 24073



Room dimensions

Floor 1

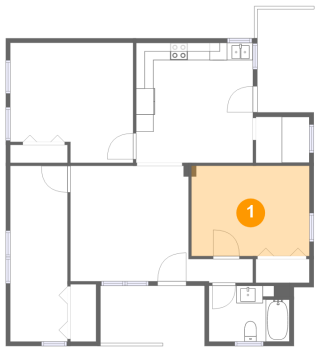
Total:1002sqft

Excluded: 153sqft

#		Max Dimensions	sqft	Included
1	Bedroom	13'5" x 10'3"	138 sq. ft	Yes
2	Patio	6'5" x 11'9"	76 sq. ft	No
3	Hall	7'4" x 2'8"	19 sq. ft	Yes
4	Living Room	13'6" x 13'2"	177 sq. ft	Yes
5	Bath	9'2" x 6'4"	57 sq. ft	Yes
6	Porch	11'10" x 6'6"	77 sq. ft	No
7	Bedroom	14'0" x 13'8"	175 sq. ft	Yes
8	Kitchen	13'4" x 13'8"	182 sq. ft	Yes
9	Bedroom	6'6" x 20'0"	131 sq. ft	Yes
10	Laundry	6'1" x 5'3"	32 sq. ft	Yes

854 Den Hill Road, Ellett, Christiansburg, Montgomery County,
Virginia, United States, 24073

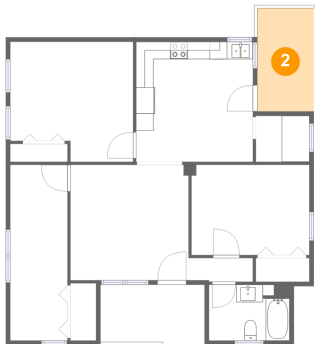
1 Floor 1 - Bedroom



Max Dimensions: 13'5" x 10'3"
Calculated Area: 138 sq. ft
Included: Yes

Heated: Yes
Finished: Yes
Enclosed: Yes
Contiguous: Yes
Permitted: Yes
Wet space: No
Addition: No
Conversion: No

2 Floor 1 - Patio

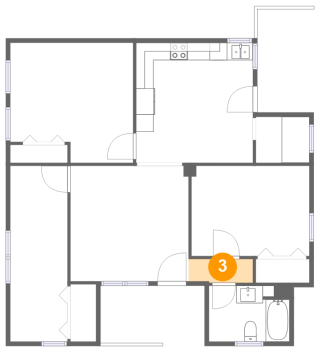


Max Dimensions: 6'5" x 11'9"
Calculated Area: 76 sq. ft
Included: No

Heated: No
Finished: Yes
Enclosed: No
Contiguous: Yes
Permitted: Yes
Wet space: No
Addition: No
Conversion: No

854 Den Hill Road, Ellett, Christiansburg, Montgomery County,
Virginia, United States, 24073

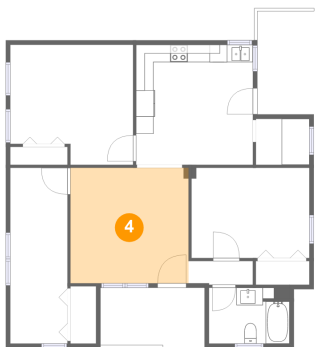
3 Floor 1 - Hall



Max Dimensions: 7'4" x 2'8"
Calculated Area: 19 sq. ft
Included: Yes

Heated: Yes
Finished: Yes
Enclosed: Yes
Contiguous: Yes
Permitted: Yes
Wet space: No
Addition: No
Conversion: No

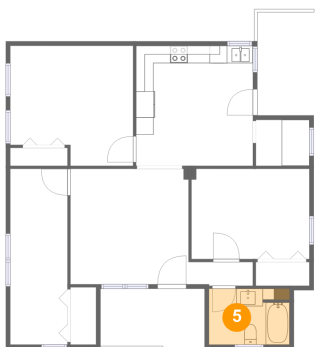
4 Floor 1 - Living Room



Max Dimensions: 13'6" x 13'2"
Calculated Area: 177 sq. ft
Included: Yes

Heated: Yes
Finished: Yes
Enclosed: Yes
Contiguous: Yes
Permitted: Yes
Wet space: No
Addition: No
Conversion: No

5 Floor 1 - Bath

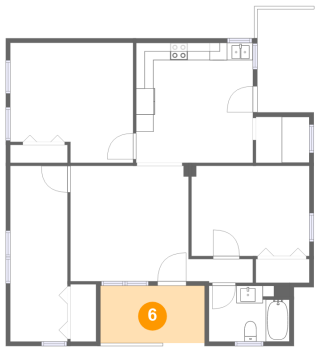


Max Dimensions: 9'2" x 6'4"
Calculated Area: 57 sq. ft
Included: Yes

Heated: Yes
Finished: Yes
Enclosed: Yes
Contiguous: Yes
Permitted: Yes
Wet space: Yes
Addition: No
Conversion: No

854 Den Hill Road, Ellett, Christiansburg, Montgomery County,
Virginia, United States, 24073

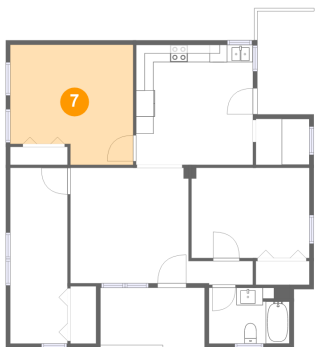
6 Floor 1 - Porch



Max Dimensions: 11'10" x 6'6"
Calculated Area: 77 sq. ft
Included: No

Heated: No
Finished: Yes
Enclosed: No
Contiguous: Yes
Permitted: Yes
Wet space: No
Addition: No
Conversion: No

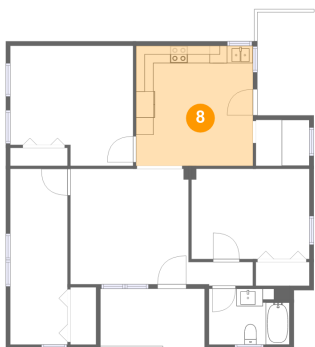
7 Floor 1 - Bedroom



Max Dimensions: 14'0" x 13'8"
Calculated Area: 175 sq. ft
Included: Yes

Heated: Yes
Finished: Yes
Enclosed: Yes
Contiguous: Yes
Permitted: Yes
Wet space: No
Addition: No
Conversion: No

8 Floor 1 - Kitchen

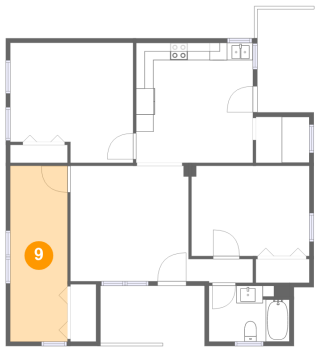


Max Dimensions: 13'4" x 13'8"
Calculated Area: 182 sq. ft
Included: Yes

Heated: Yes
Finished: Yes
Enclosed: Yes
Contiguous: Yes
Permitted: Yes
Wet space: No
Addition: No
Conversion: No

854 Den Hill Road, Ellett, Christiansburg, Montgomery County,
Virginia, United States, 24073

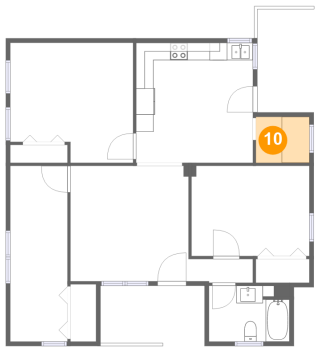
9 Floor 1 - Bedroom



Max Dimensions: 6'6" x 20'0"
Calculated Area: 131 sq. ft
Included: Yes

Heated: Yes
Finished: Yes
Enclosed: Yes
Contiguous: Yes
Permitted: Yes
Wet space: No
Addition: No
Conversion: No

10 Floor 1 - Laundry



Max Dimensions: 6'1" x 5'3"
Calculated Area: 32 sq. ft
Included: Yes

Heated: Yes
Finished: Yes
Enclosed: Yes
Contiguous: Yes
Permitted: Yes
Wet space: No
Addition: No
Conversion: No