

Home report

2616 Stanley Avenue Southeast, Roanoke, Virginia 24014,
United States



Total Area: 2547 sq. ft
Below Ground: 0 sq. ft, Floor 2: 1506 sq. ft, Floor 3: 1041 sq. ft
Excluded: Basement 780 sq. ft, Storage 246 sq. ft, Garage 251 sq. ft, Patio 570 sq. ft,
Covered patio 125 sq. ft, Walls: 260 sq. ft

Property summary

 **3** Floors

 **4** Bedrooms

 **2** Bathrooms

Home report

**2616 Stanley Avenue Southeast, Roanoke, Virginia 24014,
United States**



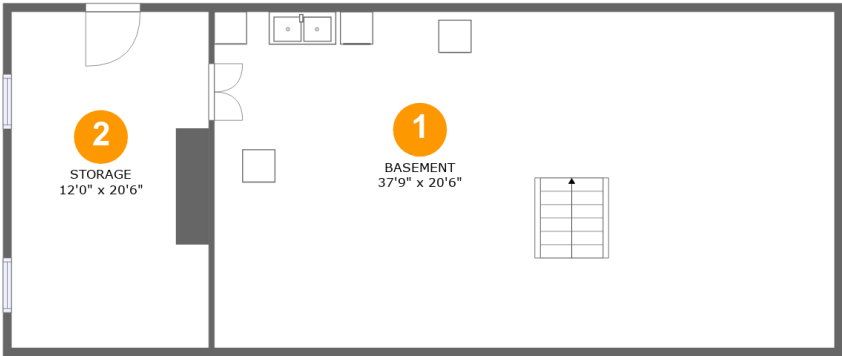
1
Half baths



1
Garages

Home report

2616 Stanley Avenue Southeast, Roanoke, Virginia 24014,
United States



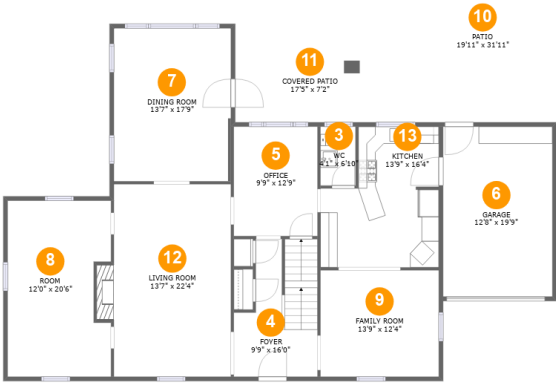
Room dimensions

Floor 1 Below ground Total:0sqft Excluded: 1026sqft

#		Max Dimensions	sqft	Included
1	Basement	37'9" x 20'6"	773 sq. ft	No
2	Storage	12'0" x 20'6"	246 sq. ft	No

Home report

2616 Stanley Avenue Southeast, Roanoke, Virginia 24014, United States



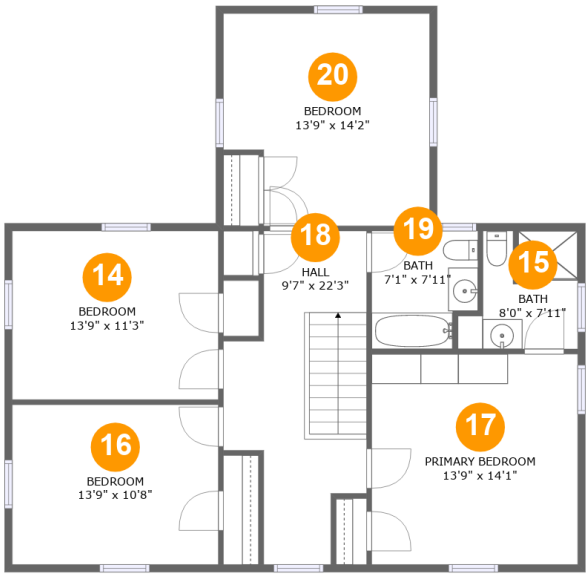
Room dimensions

Floor 2 Total:1506sqft Excluded: 946sqft

#		Max Dimensions	sqft	Included
3	WC	4'1" x 6'10"	28 sq. ft	Yes
4	Foyer	9'9" x 16'0"	132 sq. ft	Yes
5	Office	9'9" x 12'9"	124 sq. ft	Yes
6	Garage	12'8" x 19'9"	251 sq. ft	No
7	Dining Room	13'7" x 17'9"	242 sq. ft	Yes
8	Room	12'0" x 20'6"	232 sq. ft	Yes
9	Family Room	13'9" x 12'4"	170 sq. ft	Yes
10	Patio	19'11" x 31'11"	569 sq. ft	No
11	Covered Patio	17'5" x 7'2"	125 sq. ft	No
12	Living Room	13'7" x 22'4"	317 sq. ft	Yes
13	Kitchen	13'9" x 16'4"	192 sq. ft	Yes

Home report

2616 Stanley Avenue Southeast, Roanoke, Virginia 24014,
United States



Room dimensions

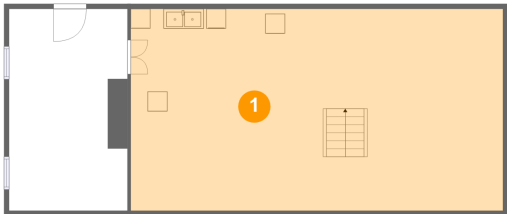
Floor 3 Total:1041sqft Excluded: 0sqft

#		Max Dimensions	sqft	Included
14	Bedroom	13'9" x 11'3"	155 sq. ft	Yes
15	Bath	8'0" x 7'11"	52 sq. ft	Yes
16	Bedroom	13'9" x 10'8"	147 sq. ft	Yes
17	Primary Bedroom	13'9" x 14'1"	193 sq. ft	Yes
18	Hall	9'7" x 22'3"	161 sq. ft	Yes
19	Bath	7'1" x 7'11"	52 sq. ft	Yes
20	Bedroom	13'9" x 14'2"	182 sq. ft	Yes

Home report

2616 Stanley Avenue Southeast, Roanoke, Virginia 24014,
United States

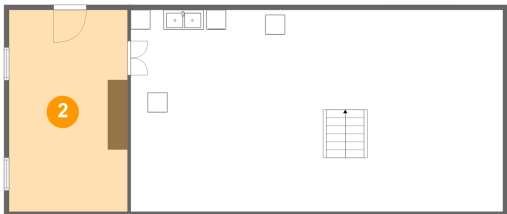
1 Floor 1 - Basement



Max Dimensions: 37'9" x 20'6"
Calculated Area: 773 sq. ft
Included: No

Heated: Yes
Finished: No
Enclosed: Yes
Contiguous: Yes
Permitted: Yes
Wet space: No
Addition: No
Conversion: No

2 Floor 1 - Storage



Max Dimensions: 12'0" x 20'6"
Calculated Area: 246 sq. ft
Included: No

Heated: No
Finished: No
Enclosed: No
Contiguous: Yes
Permitted: Yes
Wet space: No
Addition: No
Conversion: No

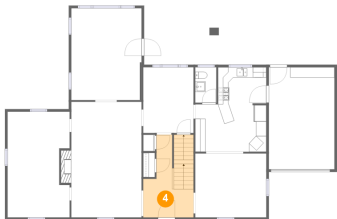
3 Floor 2 - WC



Max Dimensions: 4'1" x 6'10"
Calculated Area: 28 sq. ft
Included: Yes

Heated: Yes
Finished: Yes
Enclosed: Yes
Contiguous: Yes
Permitted: Yes
Wet space: Yes
Addition: No
Conversion: No

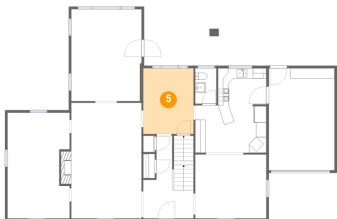
4 Floor 2 - Foyer



Max Dimensions: 9'9" x 16'0"
Calculated Area: 132 sq. ft
Included: Yes

Heated: Yes
Finished: Yes
Enclosed: Yes
Contiguous: Yes
Permitted: Yes
Wet space: No
Addition: No
Conversion: No

5 Floor 2 - Office



Max Dimensions: 9'9" x 12'9"
Calculated Area: 124 sq. ft
Included: Yes

Heated: Yes
Finished: Yes
Enclosed: Yes
Contiguous: Yes
Permitted: Yes
Wet space: No
Addition: No
Conversion: No

2616 Stanley Avenue Southeast, Roanoke, Virginia 24014,
United States

6 Floor 2 - Garage



Max Dimensions: 12'8" x 19'9"
Calculated Area: 251 sq. ft
Included: No

Heated: No
Finished: No
Enclosed: Yes
Contiguous: Yes
Permitted: Yes
Wet space: No
Addition: No
Conversion: No

7 Floor 2 - Dining Room



Max Dimensions: 13'7" x 17'9"
Calculated Area: 242 sq. ft
Included: Yes

Heated: Yes
Finished: Yes
Enclosed: Yes
Contiguous: Yes
Permitted: Yes
Wet space: No
Addition: No
Conversion: No

8 Floor 2 - Room



Max Dimensions: 12'0" x 20'6"
Calculated Area: 232 sq. ft
Included: Yes

Heated: Yes
Finished: Yes
Enclosed: Yes
Contiguous: Yes
Permitted: Yes
Wet space: No
Addition: No
Conversion: No

2616 Stanley Avenue Southeast, Roanoke, Virginia 24014,
United States

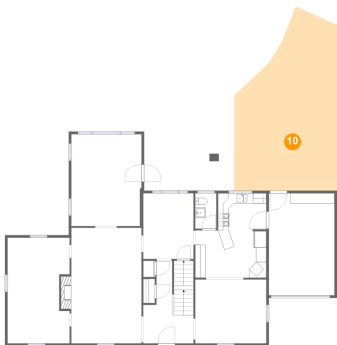
9 Floor 2 - Family Room



Max Dimensions: 13'9" x 12'4"
Calculated Area: 170 sq. ft
Included: Yes

Heated: Yes
Finished: Yes
Enclosed: Yes
Contiguous: Yes
Permitted: Yes
Wet space: No
Addition: No
Conversion: No

10 Floor 2 - Patio



Max Dimensions: 19'11" x 31'11"
Calculated Area: 569 sq. ft
Included: No

Heated: No
Finished: Yes
Enclosed: No
Contiguous: Yes
Permitted: Yes
Wet space: No
Addition: No
Conversion: No

11 Floor 2 - Covered Patio



Max Dimensions: 17'5" x 7'2"
Calculated Area: 125 sq. ft
Included: No

Heated: No
Finished: Yes
Enclosed: No
Contiguous: Yes
Permitted: Yes
Wet space: No
Addition: No
Conversion: No

12 Floor 2 - Living Room



Max Dimensions: 13'7" x 22'4"
Calculated Area: 317 sq. ft
Included: Yes

Heated: Yes
Finished: Yes
Enclosed: Yes
Contiguous: Yes
Permitted: Yes
Wet space: No
Addition: No
Conversion: No

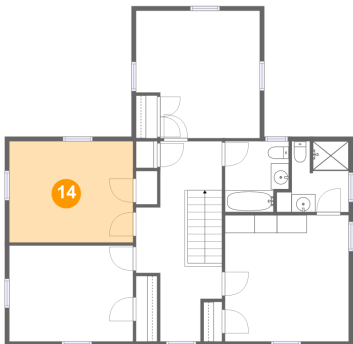
13 Floor 2 - Kitchen



Max Dimensions: 13'9" x 16'4"
Calculated Area: 192 sq. ft
Included: Yes

Heated: Yes
Finished: Yes
Enclosed: Yes
Contiguous: Yes
Permitted: Yes
Wet space: No
Addition: No
Conversion: No

14 Floor 3 - Bedroom

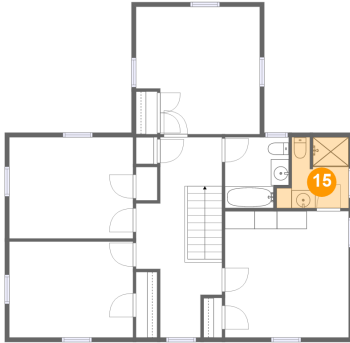


Max Dimensions: 13'9" x 11'3"
Calculated Area: 155 sq. ft
Included: Yes

Heated: Yes
Finished: Yes
Enclosed: Yes
Contiguous: Yes
Permitted: Yes
Wet space: No
Addition: No
Conversion: No

2616 Stanley Avenue Southeast, Roanoke, Virginia 24014,
United States

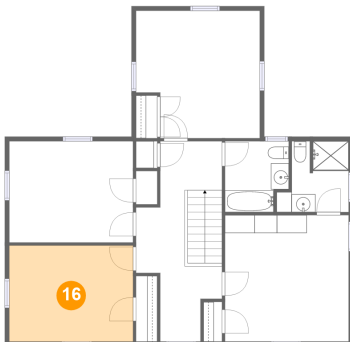
15 Floor 3 - Bath



Max Dimensions: 8'0" x 7'11"
Calculated Area: 52 sq. ft
Included: Yes

Heated: Yes
Finished: Yes
Enclosed: Yes
Contiguous: Yes
Permitted: Yes
Wet space: Yes
Addition: No
Conversion: No

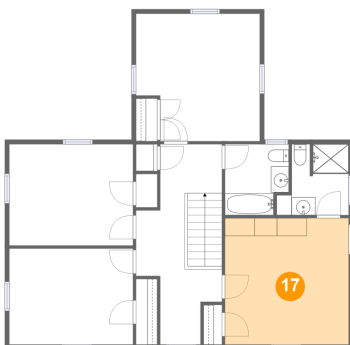
16 Floor 3 - Bedroom



Max Dimensions: 13'9" x 10'8"
Calculated Area: 147 sq. ft
Included: Yes

Heated: Yes
Finished: Yes
Enclosed: Yes
Contiguous: Yes
Permitted: Yes
Wet space: No
Addition: No
Conversion: No

17 Floor 3 - Primary Bedroom

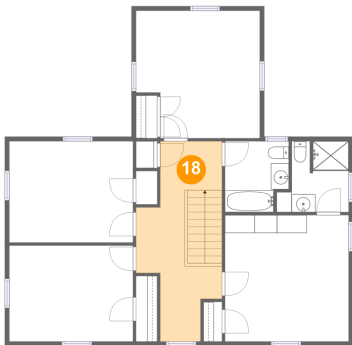


Max Dimensions: 13'9" x 14'1"
Calculated Area: 193 sq. ft
Included: Yes

Heated: Yes
Finished: Yes
Enclosed: Yes
Contiguous: Yes
Permitted: Yes
Wet space: No
Addition: No
Conversion: No

2616 Stanley Avenue Southeast, Roanoke, Virginia 24014,
United States

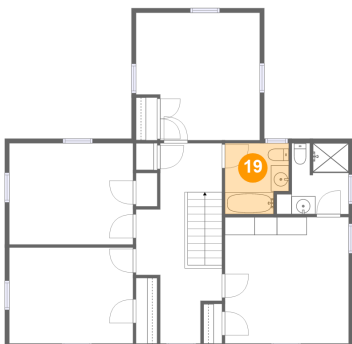
18 Floor 3 - Hall



Max Dimensions: 9'7" x 22'3"
Calculated Area: 161 sq. ft
Included: Yes

Heated: Yes
Finished: Yes
Enclosed: Yes
Contiguous: Yes
Permitted: Yes
Wet space: No
Addition: No
Conversion: No

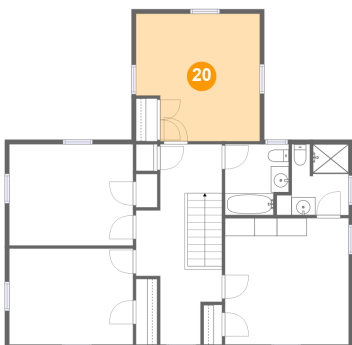
19 Floor 3 - Bath



Max Dimensions: 7'1" x 7'11"
Calculated Area: 52 sq. ft
Included: Yes

Heated: Yes
Finished: Yes
Enclosed: Yes
Contiguous: Yes
Permitted: Yes
Wet space: Yes
Addition: No
Conversion: No

20 Floor 3 - Bedroom



Max Dimensions: 13'9" x 14'2"
Calculated Area: 182 sq. ft
Included: Yes

Heated: Yes
Finished: Yes
Enclosed: Yes
Contiguous: Yes
Permitted: Yes
Wet space: No
Addition: No
Conversion: No