



P R E S E N T S

LONE STAR LAKESIDE ESTATE

724 E 715 ROAD
LAWRENCE, KS 66047

26.3 ACRE PARCEL

MAIN HOME: 5 BED / 3 BATH

GUEST HOME: 3 BED / 2.5 BATH

3 OUTBUILDINGS + CHICKEN COOP

Welcome to this extraordinary rural estate located just 12 miles southwest of Lawrence, Kansas. Nestled on 26 picturesque acres, this gated and secure property offers the perfect combination of luxury, functionality, and rural charm.

The primary residence is a stunning 4,500-square-foot home, thoughtfully designed with high-end finishes and smart features throughout. From the custom lighting design to the multiple HVAC zones, every detail has been meticulously planned to ensure comfort and efficiency.

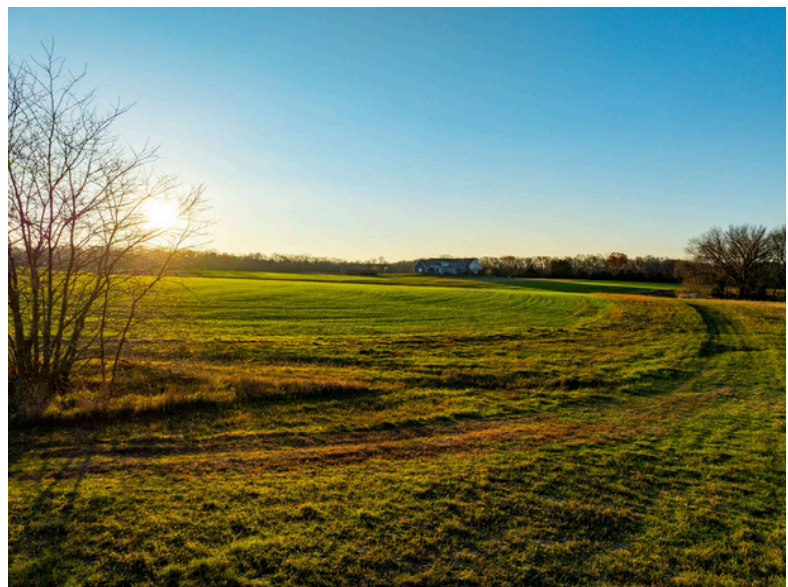
The attached 2,245-square-foot second home provides a versatile living space, ideal for multigenerational families, guest accommodations, or an Airbnb income opportunity. In 2024 alone, Airbnb bookings totaled 104 nights with an average stay of 2.9 days. With a 4.9-star guest rating, visitors rave about the comfort, amenities, and stunning surroundings. (Call for revenue details!)

This estate is a haven for those seeking a blend of modern amenities and rural living. The property features:
• 30 x 80 insulated outbuilding • 40 x 80 stone barn • 30 x 80 pole barn • chicken coop • Outdoor amenities include a pizza oven, hot tub, above-ground pool.

The grounds are beautifully landscaped with an irrigation system and an abundance of fruit trees, creating a serene and productive outdoor space. The breathtaking sunrise and sunset views add to the property's allure.

Sustainability and security are at the heart of this estate's design. Solar panels help power the home, complemented by a backup generator for added peace of mind. Advanced water management systems, sump pumps, and a comprehensive security system ensure the property is well-equipped for any situation.

Whether you're looking for a private retreat, a functional homestead, or an income-generating opportunity, this estate has it all. Schedule a private tour to fully appreciate the unique features and thoughtful design of this exceptional property.



Main House



Main House



Guest House



