



**4440 Ormond Trace  
Marietta Ga 30066**



YEAR  
1987



BEDS  
4



BATHS  
3



GARAGE  
2



SQ.FT.  
3062.86

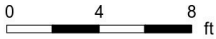






4440 ORMOND TRACE MARIETTA

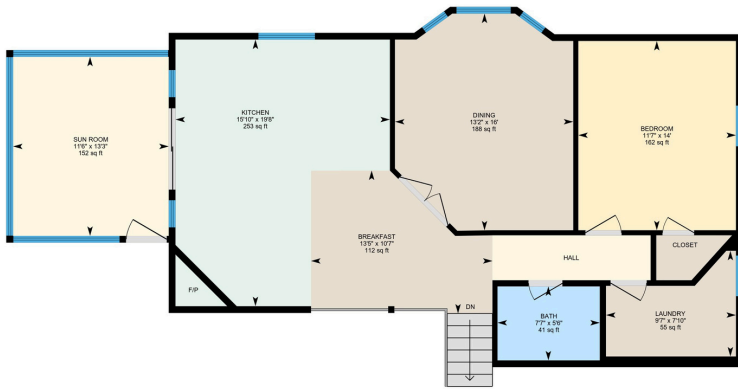
Main Floor Finished Area 1525.26 sq ft



PREPARED: 2025/02/03



1st Floor Finished Area 1151.43 sq ft

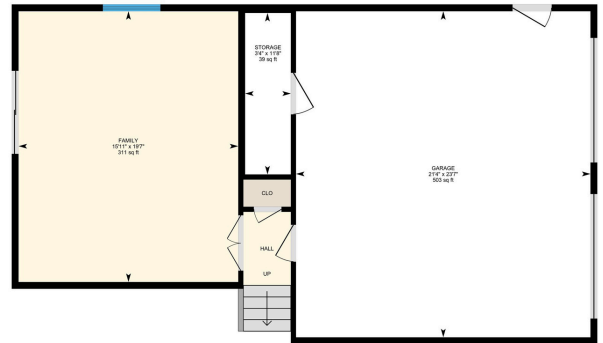


PREPARED: 2025/02/03



4440 Ormond Trce NE, Marietta, GA

Lower Level Finished Area 386.15 sq ft  
Unfinished Area 581.71 sq ft



PREPARED: 2025/02/03

While regions are excluded from total floor area in iGUIDE floor plans. All room dimensions and floor areas must be considered approximate and are subject to independent verification.

BEDS 4  
 BATHS 3  
 GARAGE 2  
 YEAR 1987  
 SQ. FT. 3062.86

\*Sq. Ft. listed includes 386.15 SQFT from the DEN on Lower level

IT'S THE PERFECT SPOT TO CALL HOME!



**TANIA**  
 Gardère MacLeod  
  
 itstheperfectspot.com

TANIA GARDÈRE MACLEOD  
 404.964.2267 (CELL)  
 855.450.0442 (BROKER)  
 TANIA@ITSTHEPERFECTSPOT.COM  
 800 BATTERY AVE, ATLANTA, GA 30339

SCAN QR CODE BY  
 OPENING YOUR  
 PHONE CAMERA to  
 see all the  
 professional  
 photos, video and  
 3D Home Tour!

