

Home report

18805 20th Avenue Southeast, Mill Creek East, Bothell,
Snohomish County, Washington, United States, 98012



Total Area: 1714 sq. ft
Floor 1: 857 sq. ft, Floor 2: 857 sq. ft
Excluded: Garage 426 sq. ft, Opentobelow 289 sq. ft

Property summary

 **2** Floors

 **3** Bedrooms

 **2** Bathrooms

Home report

**18805 20th Avenue Southeast, Mill Creek East, Bothell,
Snohomish County, Washington, United States, 98012**



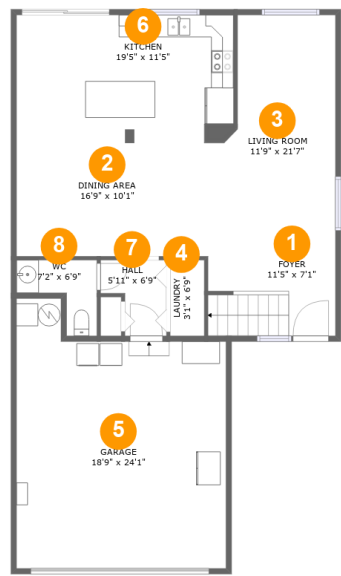
1
Half baths



1
Garages

Home report

18805 20th Avenue Southeast, Mill Creek East, Bothell,
Snohomish County, Washington, United States, 98012



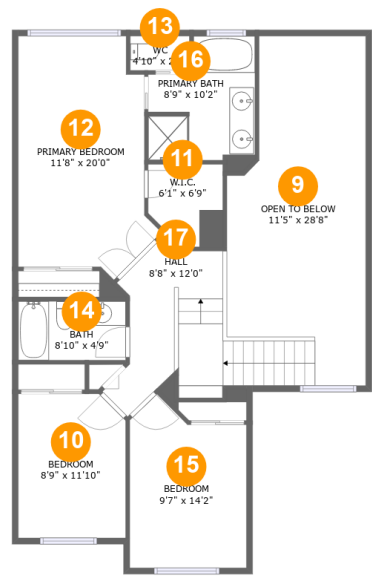
Room dimensions

Floor 1 Total:857sqft Excluded: 426sqft

#		Max Dimensions	sqft	Included
1	Foyer	11'5" x 7'1"	80 sq. ft	Yes
2	Dining Area	16'9" x 10'1"	170 sq. ft	Yes
3	Living Room	11'9" x 21'7"	219 sq. ft	Yes
4	Laundry	3'1" x 6'9"	21 sq. ft	Yes
5	Garage	18'9" x 24'1"	394 sq. ft	No
6	Kitchen	19'5" x 11'5"	217 sq. ft	Yes
7	Hall	5'11" x 6'9"	32 sq. ft	Yes
8	WC	7'2" x 6'9"	31 sq. ft	Yes

Home report

18805 20th Avenue Southeast, Mill Creek East, Bothell,
Snohomish County, Washington, United States, 98012



Room dimensions

Floor 2 Total:857sqft Excluded: 289sqft

#		Max Dimensions	sqft	Included
9	Open To Below	11'5" x 28'8"	268 sq. ft	No
10	Bedroom	8'9" x 11'10"	102 sq. ft	Yes
11	W.I.C.	6'1" x 6'9"	38 sq. ft	Yes
12	Primary Bedroom	11'8" x 20'0"	193 sq. ft	Yes
13	WC	4'10" x 2'9"	14 sq. ft	Yes
14	Bath	8'10" x 4'9"	42 sq. ft	Yes
15	Bedroom	9'7" x 14'2"	119 sq. ft	Yes
16	Primary Bath	8'9" x 10'2"	75 sq. ft	Yes
17	Hall	8'8" x 12'0"	129 sq. ft	Yes

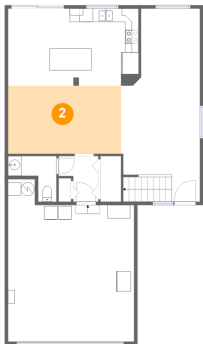
1 Floor 1 - Foyer



Max Dimensions: 11'5" x 7'1"
Calculated Area: 80 sq. ft
Included: Yes

Heated: Yes
Finished: Yes
Enclosed: Yes
Contiguous: Yes
Permitted: Yes
Wet space: No
Addition: No
Conversion: No

2 Floor 1 - Dining Area



Max Dimensions: 16'9" x 10'1"
Calculated Area: 170 sq. ft
Included: Yes

Heated: Yes
Finished: Yes
Enclosed: Yes
Contiguous: Yes
Permitted: Yes
Wet space: No
Addition: No
Conversion: No

3 Floor 1 - Living Room



Max Dimensions: 11'9" x 21'7"
Calculated Area: 219 sq. ft
Included: Yes

Heated: Yes
Finished: Yes
Enclosed: Yes
Contiguous: Yes
Permitted: Yes
Wet space: No
Addition: No
Conversion: No

4 Floor 1 - Laundry



Max Dimensions: 3'1" x 6'9"
Calculated Area: 21 sq. ft
Included: Yes

Heated: Yes
Finished: Yes
Enclosed: Yes
Contiguous: Yes
Permitted: Yes
Wet space: No
Addition: No
Conversion: No

5 Floor 1 - Garage



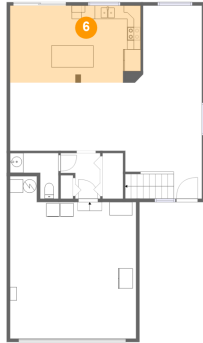
Max Dimensions: 18'9" x 24'1"
Calculated Area: 394 sq. ft
Included: No

Heated: No
Finished: No
Enclosed: Yes
Contiguous: Yes
Permitted: Yes
Wet space: No
Addition: No
Conversion: No

Home report

18805 20th Avenue Southeast, Mill Creek East, Bothell,
Snohomish County, Washington, United States, 98012

6 Floor 1 - Kitchen



Max Dimensions: 19'5" x 11'5"
Calculated Area: 217 sq. ft
Included: Yes

Heated: Yes
Finished: Yes
Enclosed: Yes
Contiguous: Yes
Permitted: Yes
Wet space: No
Addition: No
Conversion: No

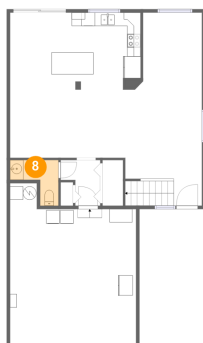
7 Floor 1 - Hall



Max Dimensions: 5'11" x 6'9"
Calculated Area: 32 sq. ft
Included: Yes

Heated: Yes
Finished: Yes
Enclosed: Yes
Contiguous: Yes
Permitted: Yes
Wet space: No
Addition: No
Conversion: No

8 Floor 1 - WC

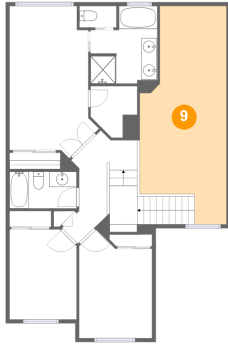


Max Dimensions: 7'2" x 6'9"
Calculated Area: 31 sq. ft
Included: Yes

Heated: Yes
Finished: Yes
Enclosed: Yes
Contiguous: Yes
Permitted: Yes
Wet space: No
Addition: No
Conversion: No

18805 20th Avenue Southeast, Mill Creek East, Bothell,
Snohomish County, Washington, United States, 98012

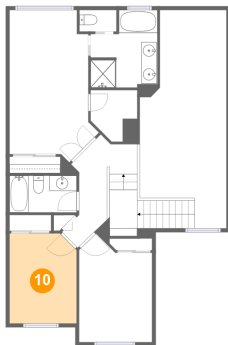
9 Floor 2 - Open To Below



Max Dimensions: 11'5" x 28'8"
Calculated Area: 268 sq. ft
Included: No

Heated: No
Finished: No
Enclosed: No
Contiguous: Yes
Permitted: No
Wet space: No
Addition: No
Conversion: No

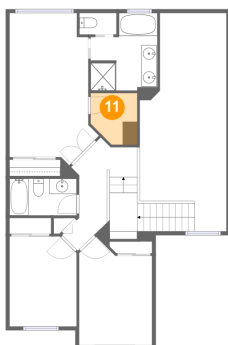
10 Floor 2 - Bedroom



Max Dimensions: 8'9" x 11'10"
Calculated Area: 102 sq. ft
Included: Yes

Heated: Yes
Finished: Yes
Enclosed: Yes
Contiguous: Yes
Permitted: Yes
Wet space: No
Addition: No
Conversion: No

11 Floor 2 - W.I.C.

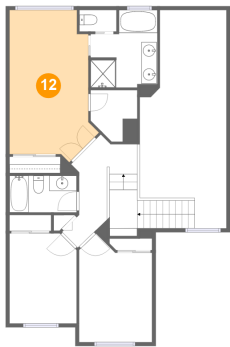


Max Dimensions: 6'1" x 6'9"
Calculated Area: 38 sq. ft
Included: Yes

Heated: Yes
Finished: Yes
Enclosed: Yes
Contiguous: Yes
Permitted: Yes
Wet space: No
Addition: No
Conversion: No

18805 20th Avenue Southeast, Mill Creek East, Bothell,
Snohomish County, Washington, United States, 98012

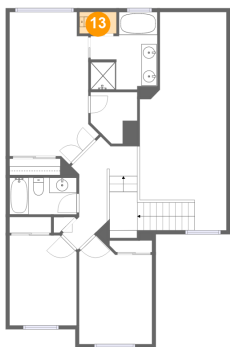
12 Floor 2 - Primary Bedroom



Max Dimensions: 11'8" x 20'0"
Calculated Area: 193 sq. ft
Included: Yes

Heated: Yes
Finished: Yes
Enclosed: Yes
Contiguous: Yes
Permitted: Yes
Wet space: No
Addition: No
Conversion: No

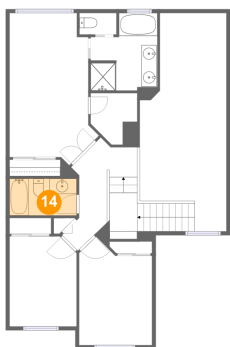
13 Floor 2 - WC



Max Dimensions: 4'10" x 2'9"
Calculated Area: 14 sq. ft
Included: Yes

Heated: Yes
Finished: Yes
Enclosed: Yes
Contiguous: Yes
Permitted: Yes
Wet space: Yes
Addition: No
Conversion: No

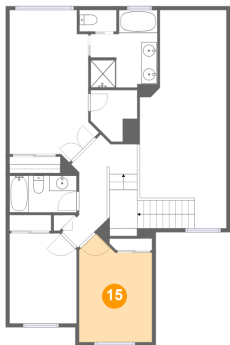
14 Floor 2 - Bath



Max Dimensions: 8'10" x 4'9"
Calculated Area: 42 sq. ft
Included: Yes

Heated: Yes
Finished: Yes
Enclosed: Yes
Contiguous: Yes
Permitted: Yes
Wet space: Yes
Addition: No
Conversion: No

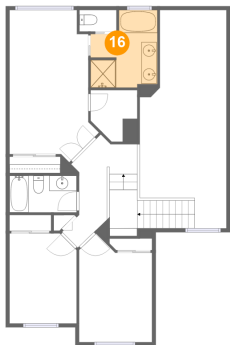
15 Floor 2 - Bedroom



Max Dimensions: 9'7" x 14'2"
Calculated Area: 119 sq. ft
Included: Yes

Heated: Yes
Finished: Yes
Enclosed: Yes
Contiguous: Yes
Permitted: Yes
Wet space: No
Addition: No
Conversion: No

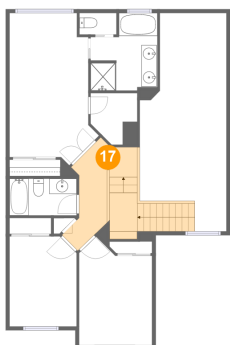
16 Floor 2 - Primary Bath



Max Dimensions: 8'9" x 10'2"
Calculated Area: 75 sq. ft
Included: Yes

Heated: Yes
Finished: Yes
Enclosed: Yes
Contiguous: Yes
Permitted: Yes
Wet space: Yes
Addition: No
Conversion: No

17 Floor 2 - Hall



Max Dimensions: 8'8" x 12'0"
Calculated Area: 129 sq. ft
Included: Yes

Heated: Yes
Finished: Yes
Enclosed: Yes
Contiguous: Yes
Permitted: Yes
Wet space: No
Addition: No
Conversion: No