



Home report


2226 Wycliffe Ave SW,Roanoke,Virginia,United States





Property summary


 **0** Garages


 **3** Bedrooms

 **1** Bathrooms

 **1** Half baths

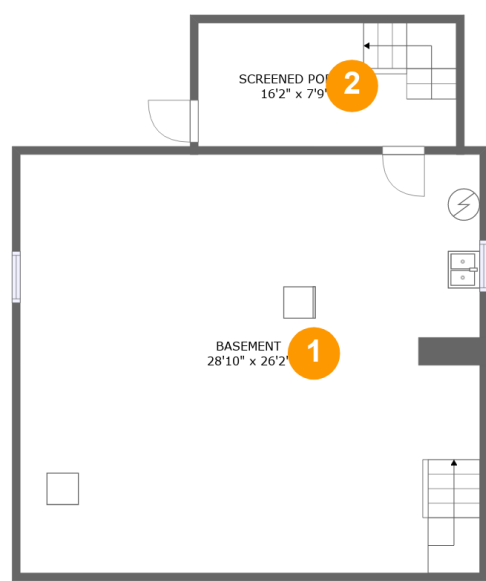
 **3** Floors

 **1,588** Gross living area sqft

 **3,144** Total sqft

Home report

2226 Wycliffe Ave SW,Roanoke,Virginia,United States



Room dimensions

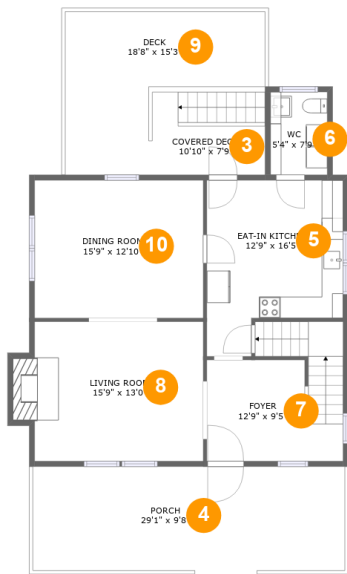
Floor 1

Total sqft: 952    Living area: 0

#		Dimensions	sqft	Counted as living area
1	Basement	28'10" x 26'2"	748 sq. ft	No
2	Screened Porch	16'2" x 7'9"	125 sq. ft	No

Home report

2226 Wycliffe Ave SW,Roanoke,Virginia,United States



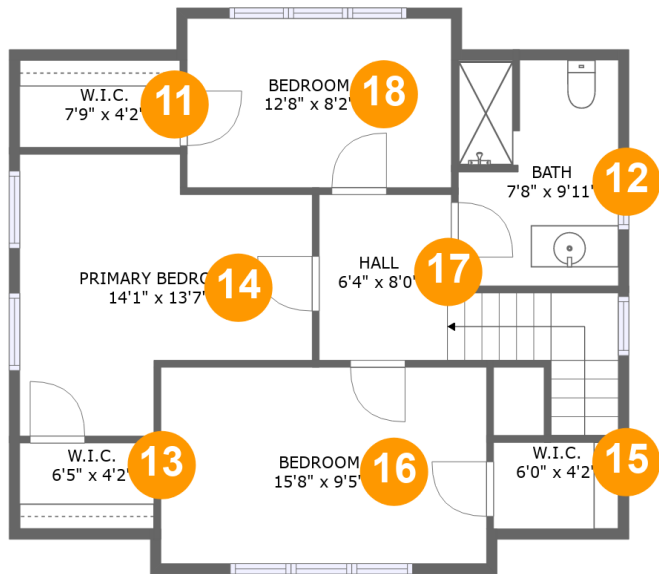
Room dimensions

Floor 2 Total sqft: 1435    Living area: 863

#		Dimensions	sqft	Counted as living area
3	Covered Deck	10'10" x 7'9"	80 sq. ft	No
4	Porch	29'1" x 9'8"	283 sq. ft	No
5	Eat-in Kitchen	12'9" x 16'5"	179 sq. ft	Yes
6	WC	5'4" x 7'9"	41 sq. ft	Yes
7	Foyer	12'9" x 9'5"	147 sq. ft	Yes
8	Living Room	15'9" x 13'0"	217 sq. ft	Yes
9	Deck	18'8" x 15'3"	195 sq. ft	No
10	Dining Room	15'9" x 12'10"	203 sq. ft	Yes

Home report

2226 Wycliffe Ave SW,Roanoke,Virginia,United States



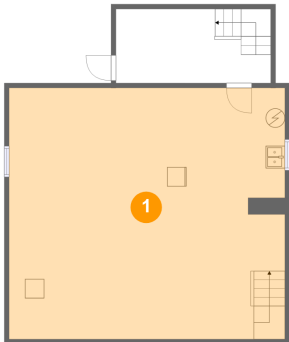
Room dimensions

Floor 3

Total sqft: 757    Living area: 725

#		Dimensions	sqft	Counted as living area
11	W.I.C.	7'9" x 4'2"	28 sq. ft	Yes
12	Bath	7'8" x 9'11"	77 sq. ft	Yes
13	W.I.C.	6'5" x 4'2"	23 sq. ft	Yes
14	Primary Bedroom	14'1" x 13'7"	151 sq. ft	Yes
15	W.I.C.	6'0" x 4'2"	21 sq. ft	Yes
16	Bedroom	15'8" x 9'5"	148 sq. ft	Yes
17	Hall	6'4" x 8'0"	88 sq. ft	Yes
18	Bedroom	12'8" x 8'2"	103 sq. ft	Yes

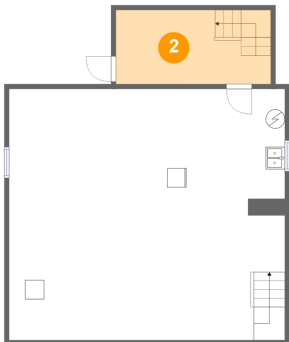
1 Floor 1 - Basement



Dimensions: 28'10" x 26'2"  
Area: 748 sq. ft  
Counted as living area: No

Heated: Yes  
Finished: No  
Enclosed: Yes  
Contiguous: Yes  
Permitted: Yes  
Wet space: No  
Addition: No  
Conversion: No

2 Floor 1 - Screened Porch



Dimensions: 16'2" x 7'9"  
Area: 125 sq. ft  
Counted as living area: No

Heated: No  
Finished: Yes  
Enclosed: No  
Contiguous: Yes  
Permitted: Yes  
Wet space: No  
Addition: No  
Conversion: No

### 3 Floor 2 - Covered Deck



Dimensions: 10'10" x 7'9"  
Area: 80 sq. ft  
Counted as living area: No

Heated: No  
Finished: Yes  
Enclosed: No  
Contiguous: Yes  
Permitted: Yes  
Wet space: No  
Addition: No  
Conversion: No

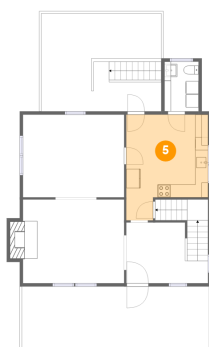
### 4 Floor 2 - Porch



Dimensions: 29'1" x 9'8"  
Area: 283 sq. ft  
Counted as living area: No

Heated: No  
Finished: Yes  
Enclosed: No  
Contiguous: Yes  
Permitted: Yes  
Wet space: No  
Addition: No  
Conversion: No

### 5 Floor 2 - Eat-in Kitchen



Dimensions: 12'9" x 16'5"  
Area: 179 sq. ft  
Counted as living area: Yes

Heated: Yes  
Finished: Yes  
Enclosed: Yes  
Contiguous: Yes  
Permitted: Yes  
Wet space: No  
Addition: No  
Conversion: No

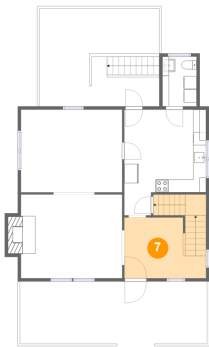
6 Floor 2 - WC



Dimensions: 5'4" x 7'9"  
Area: 41 sq. ft  
Counted as living area: Yes

Heated: Yes  
Finished: Yes  
Enclosed: Yes  
Contiguous: Yes  
Permitted: Yes  
Wet space: Yes  
Addition: No  
Conversion: No

7 Floor 2 - Foyer



Dimensions: 12'9" x 9'5"  
Area: 147 sq. ft  
Counted as living area: Yes

Heated: Yes  
Finished: Yes  
Enclosed: Yes  
Contiguous: Yes  
Permitted: Yes  
Wet space: No  
Addition: No  
Conversion: No

8 Floor 2 - Living Room



Dimensions: 15'9" x 13'0"  
Area: 217 sq. ft  
Counted as living area: Yes

Heated: Yes  
Finished: Yes  
Enclosed: Yes  
Contiguous: Yes  
Permitted: Yes  
Wet space: No  
Addition: No  
Conversion: No

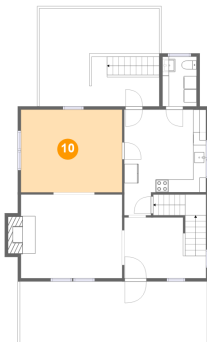
## 9 Floor 2 - Deck



Dimensions: 18'8" x 15'3"  
Area: 195 sq. ft  
Counted as living area: No

Heated: No  
Finished: Yes  
Enclosed: No  
Contiguous: Yes  
Permitted: Yes  
Wet space: No  
Addition: No  
Conversion: No

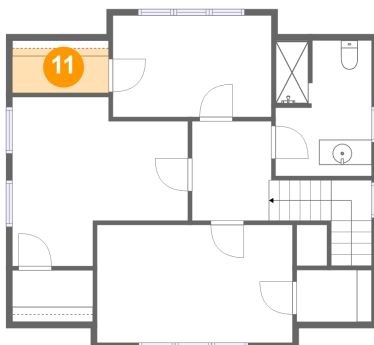
## 10 Floor 2 - Dining Room



Dimensions: 15'9" x 12'10"  
Area: 203 sq. ft  
Counted as living area: Yes

Heated: Yes  
Finished: Yes  
Enclosed: Yes  
Contiguous: Yes  
Permitted: Yes  
Wet space: No  
Addition: No  
Conversion: No

## 11 Floor 3 - W.I.C.

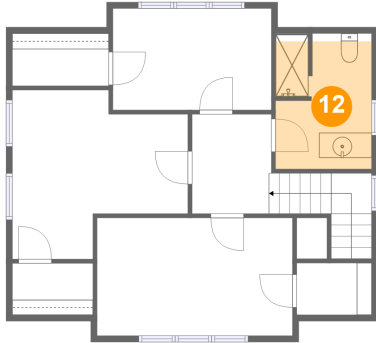


Dimensions: 7'9" x 4'2"  
Area: 28 sq. ft  
Counted as living area: Yes

Heated: Yes  
Finished: Yes  
Enclosed: Yes  
Contiguous: Yes  
Permitted: Yes  
Wet space: No  
Addition: No  
Conversion: No



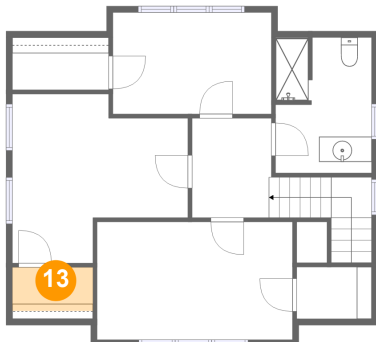
## 12 Floor 3 - Bath



Dimensions: 7'8" x 9'11"  
Area: 77 sq. ft  
Counted as living area: Yes

Heated: Yes  
Finished: Yes  
Enclosed: Yes  
Contiguous: Yes  
Permitted: Yes  
Wet space: Yes  
Addition: No  
Conversion: No

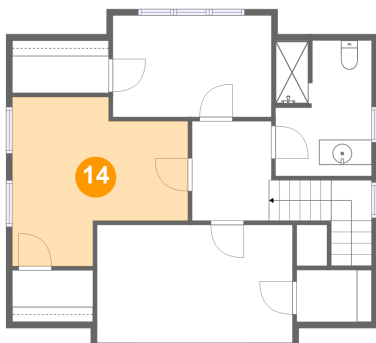
## 13 Floor 3 - W.I.C.



Dimensions: 6'5" x 4'2"  
Area: 23 sq. ft  
Counted as living area: Yes

Heated: Yes  
Finished: Yes  
Enclosed: Yes  
Contiguous: Yes  
Permitted: Yes  
Wet space: No  
Addition: No  
Conversion: No

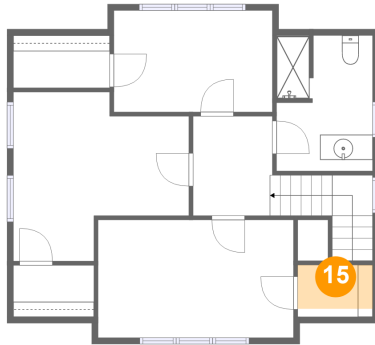
## 14 Floor 3 - Primary Bedroom



Dimensions: 14'1" x 13'7"  
Area: 151 sq. ft  
Counted as living area: Yes

Heated: Yes  
Finished: Yes  
Enclosed: Yes  
Contiguous: Yes  
Permitted: Yes  
Wet space: No  
Addition: No  
Conversion: No

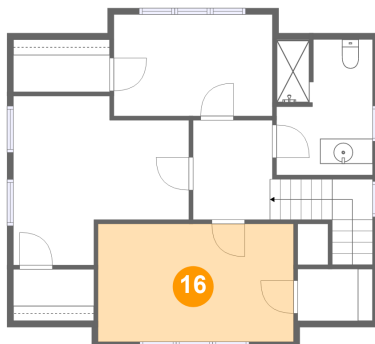
### 15 Floor 3 - W.I.C.



Dimensions: 6'0" x 4'2"  
Area: 21 sq. ft  
Counted as living area: Yes

Heated: Yes  
Finished: Yes  
Enclosed: Yes  
Contiguous: Yes  
Permitted: Yes  
Wet space: No  
Addition: No  
Conversion: No

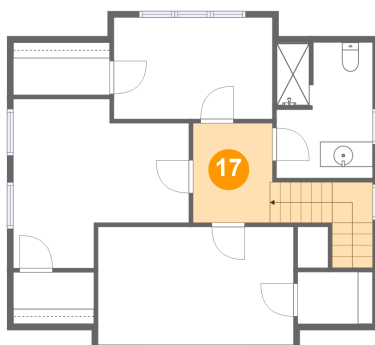
### 16 Floor 3 - Bedroom



Dimensions: 15'8" x 9'5"  
Area: 148 sq. ft  
Counted as living area: Yes

Heated: Yes  
Finished: Yes  
Enclosed: Yes  
Contiguous: Yes  
Permitted: Yes  
Wet space: No  
Addition: No  
Conversion: No

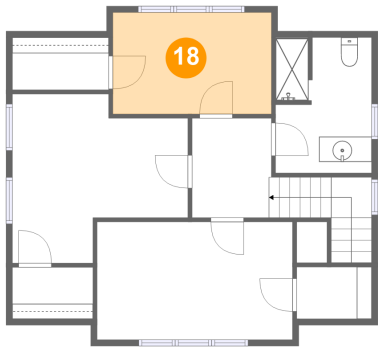
### 17 Floor 3 - Hall



Dimensions: 6'4" x 8'0"  
Area: 88 sq. ft  
Counted as living area: Yes

Heated: Yes  
Finished: Yes  
Enclosed: Yes  
Contiguous: Yes  
Permitted: Yes  
Wet space: No  
Addition: No  
Conversion: No

18 Floor 3 - Bedroom



Dimensions: 12'8" x 8'2"  
Area: 103 sq. ft  
Counted as living area: Yes

Heated: Yes  
Finished: Yes  
Enclosed: Yes  
Contiguous: Yes  
Permitted: Yes  
Wet space: No  
Addition: No  
Conversion: No