

Home report

6521 Woodbrook Drive, Brookwood, Roanoke, Roanoke County,
Virginia, United States, 24018




Total Area: 2652 sq. ft
Floor 1: 848 sq. ft, Floor 2: 1804 sq. ft
Excluded: Garage 859 sq. ft, Fireplace 28 sq. ft, Porch 82 sq. ft, Screened porch 262 sq. ft, Deck 199 sq. ft, Walls: 227 sq. ft

Property summary

 **2** Floors

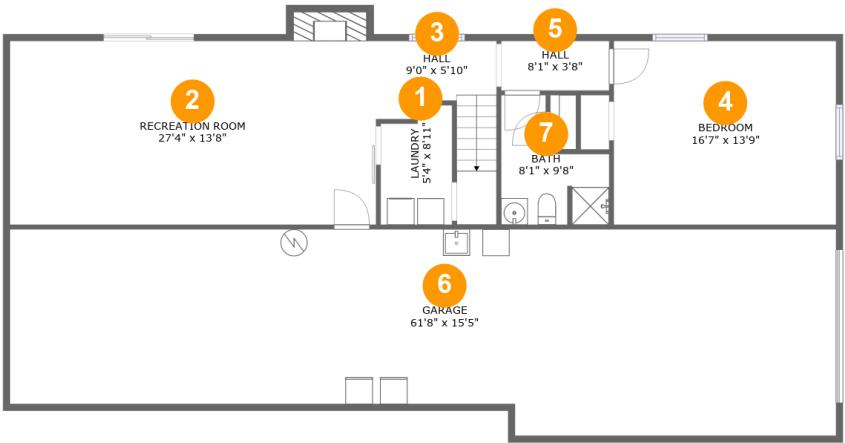
 **4** Bedrooms

 **3** Bathrooms

 **1** Garages

Home report

6521 Woodbrook Drive, Brookwood, Roanoke, Roanoke County,
Virginia, United States, 24018



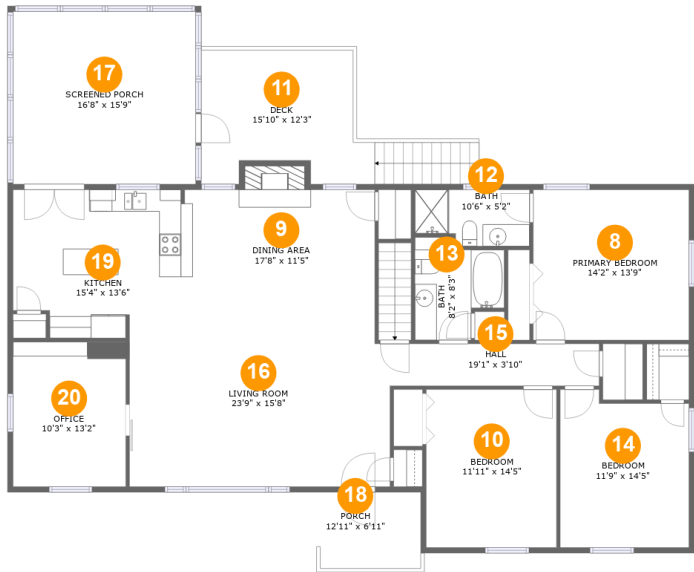
Room dimensions

Floor 1 Total:848sqft Excluded: 873sqft

#		Max Dimensions	sqft	Included
1	Laundry	5'4" x 8'11"	44 sq. ft	Yes
2	Recreation Room	27'4" x 13'8"	387 sq. ft	Yes
3	Hall	9'0" x 5'10"	72 sq. ft	Yes
4	Bedroom	16'7" x 13'9"	227 sq. ft	Yes
5	Hall	8'1" x 3'8"	30 sq. ft	Yes
6	Garage	61'8" x 15'5"	859 sq. ft	No
7	Bath	8'1" x 9'8"	56 sq. ft	Yes

Home report

6521 Woodbrook Drive, Brookwood, Roanoke, Roanoke County,
Virginia, United States, 24018



Room dimensions

Floor 2

Total:1804sqft Excluded: 557sqft

#		Max Dimensions	sqft	Included
8	Primary Bedroom	14'2" x 13'9"	195 sq. ft	Yes
9	Dining Area	17'8" x 11'5"	213 sq. ft	Yes
10	Bedroom	11'11" x 14'5"	171 sq. ft	Yes
11	Deck	15'10" x 12'3"	199 sq. ft	No
12	Bath	10'6" x 5'2"	50 sq. ft	Yes
13	Bath	8'2" x 8'3"	62 sq. ft	Yes
14	Bedroom	11'9" x 14'5"	159 sq. ft	Yes
15	Hall	19'1" x 3'10"	73 sq. ft	Yes
16	Living Room	23'9" x 15'8"	369 sq. ft	Yes
17	Screened Porch	16'8" x 15'9"	262 sq. ft	No
18	Porch	12'11" x 6'11"	82 sq. ft	No

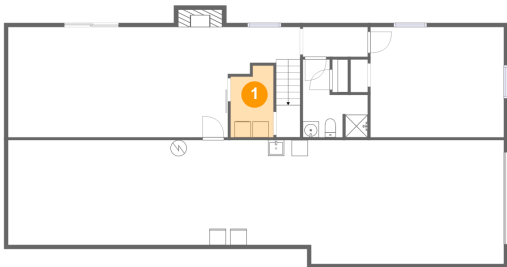
Home report

6521 Woodbrook Drive, Brookwood, Roanoke, Roanoke County,
Virginia, United States, 24018

#		Max Dimensions	sqft	Included
19	Kitchen	15'4" x 13'6"	188 sq. ft	Yes
20	Office	10'3" x 13'2"	136 sq. ft	Yes

6521 Woodbrook Drive, Brookwood, Roanoke, Roanoke County,
Virginia, United States, 24018

1 Floor 1 - Laundry



Max Dimensions: 5'4" x 8'11"
Calculated Area: 44 sq. ft
Included: Yes

Heated: Yes
Finished: Yes
Enclosed: Yes
Contiguous: Yes
Permitted: Yes
Wet space: No
Addition: No
Conversion: No

2 Floor 1 - Recreation Room

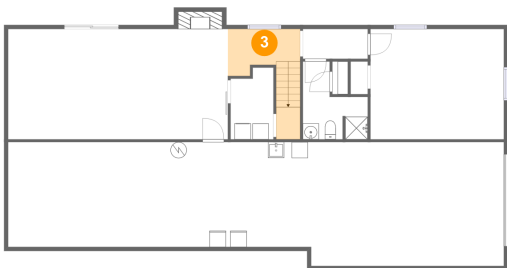


Max Dimensions: 27'4" x 13'8"
Calculated Area: 387 sq. ft
Included: Yes

Heated: Yes
Finished: Yes
Enclosed: Yes
Contiguous: Yes
Permitted: Yes
Wet space: No
Addition: No
Conversion: No

6521 Woodbrook Drive, Brookwood, Roanoke, Roanoke County,
Virginia, United States, 24018

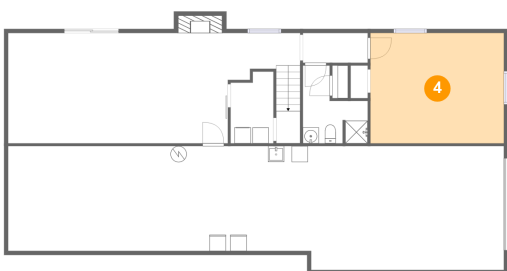
3 Floor 1 - Hall



Max Dimensions: 9'0" x 5'10"
Calculated Area: 72 sq. ft
Included: Yes

Heated: Yes
Finished: Yes
Enclosed: Yes
Contiguous: Yes
Permitted: Yes
Wet space: No
Addition: No
Conversion: No

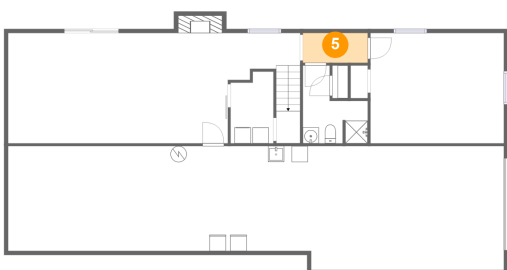
4 Floor 1 - Bedroom



Max Dimensions: 16'7" x 13'9"
Calculated Area: 227 sq. ft
Included: Yes

Heated: Yes
Finished: Yes
Enclosed: Yes
Contiguous: Yes
Permitted: Yes
Wet space: No
Addition: No
Conversion: No

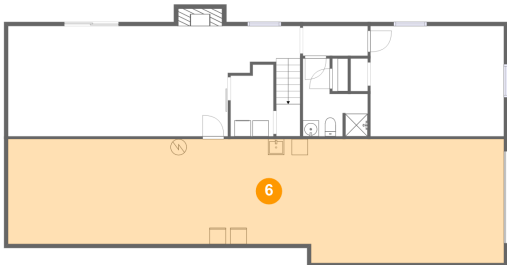
5 Floor 1 - Hall



Max Dimensions: 8'1" x 3'8"
Calculated Area: 30 sq. ft
Included: Yes

Heated: Yes
Finished: Yes
Enclosed: Yes
Contiguous: Yes
Permitted: Yes
Wet space: No
Addition: No
Conversion: No

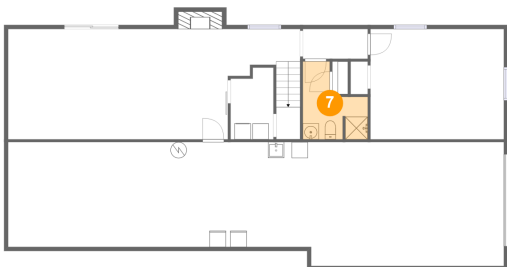
6 Floor 1 - Garage



Max Dimensions: 61'8" x 15'5"
Calculated Area: 859 sq. ft
Included: No

Heated: No
Finished: No
Enclosed: Yes
Contiguous: Yes
Permitted: Yes
Wet space: No
Addition: No
Conversion: No

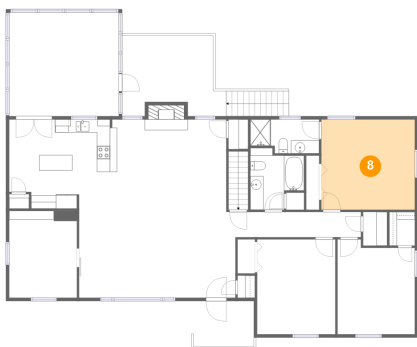
7 Floor 1 - Bath



Max Dimensions: 8'1" x 9'8"
Calculated Area: 56 sq. ft
Included: Yes

Heated: Yes
Finished: Yes
Enclosed: Yes
Contiguous: Yes
Permitted: Yes
Wet space: Yes
Addition: No
Conversion: No

8 Floor 2 - Primary Bedroom

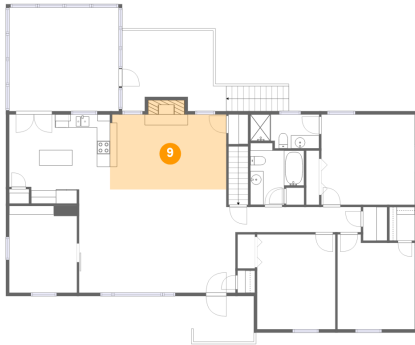


Max Dimensions: 14'2" x 13'9"
Calculated Area: 195 sq. ft
Included: Yes

Heated: Yes
Finished: Yes
Enclosed: Yes
Contiguous: Yes
Permitted: Yes
Wet space: No
Addition: No
Conversion: No

6521 Woodbrook Drive, Brookwood, Roanoke, Roanoke County,
Virginia, United States, 24018

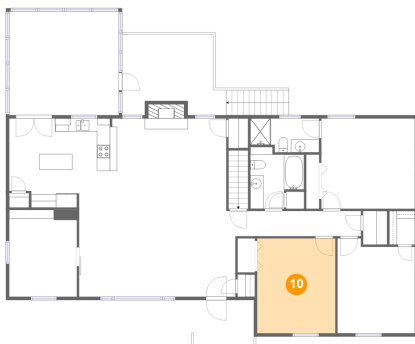
9 Floor 2 - Dining Area



Max Dimensions: 17'8" x 11'5"
Calculated Area: 213 sq. ft
Included: Yes

Heated: Yes
Finished: Yes
Enclosed: Yes
Contiguous: Yes
Permitted: Yes
Wet space: No
Addition: No
Conversion: No

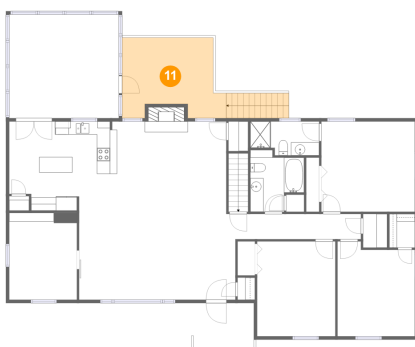
10 Floor 2 - Bedroom



Max Dimensions: 11'11" x 14'5"
Calculated Area: 171 sq. ft
Included: Yes

Heated: Yes
Finished: Yes
Enclosed: Yes
Contiguous: Yes
Permitted: Yes
Wet space: No
Addition: No
Conversion: No

11 Floor 2 - Deck

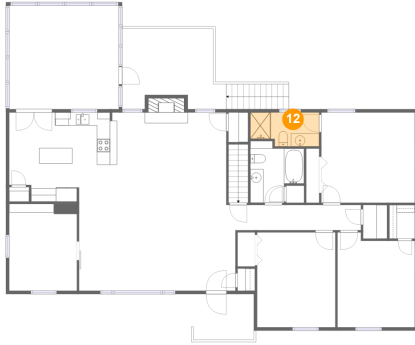


Max Dimensions: 15'10" x 12'3"
Calculated Area: 199 sq. ft
Included: No

Heated: No
Finished: Yes
Enclosed: No
Contiguous: Yes
Permitted: Yes
Wet space: No
Addition: No
Conversion: No

6521 Woodbrook Drive, Brookwood, Roanoke, Roanoke County,
Virginia, United States, 24018

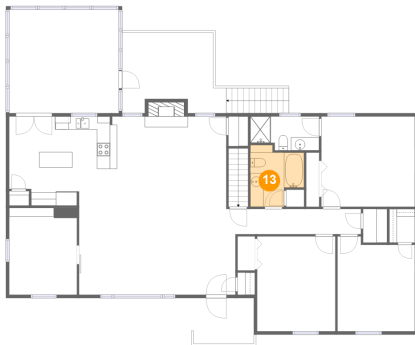
12 Floor 2 - Bath



Max Dimensions: 10'6" x 5'2"
Calculated Area: 50 sq. ft
Included: Yes

Heated: Yes
Finished: Yes
Enclosed: Yes
Contiguous: Yes
Permitted: Yes
Wet space: Yes
Addition: No
Conversion: No

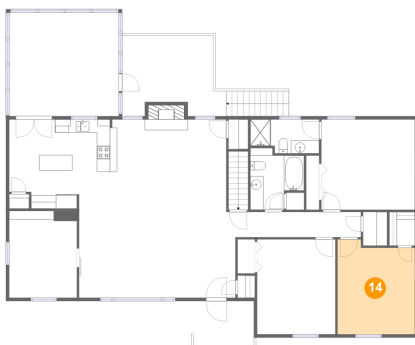
13 Floor 2 - Bath



Max Dimensions: 8'2" x 8'3"
Calculated Area: 62 sq. ft
Included: Yes

Heated: Yes
Finished: Yes
Enclosed: Yes
Contiguous: Yes
Permitted: Yes
Wet space: Yes
Addition: No
Conversion: No

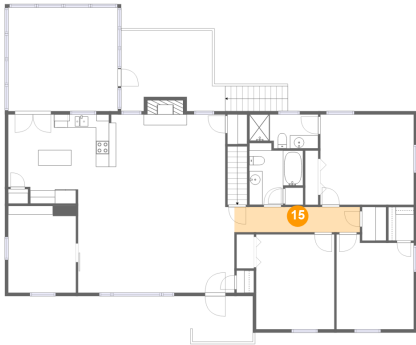
14 Floor 2 - Bedroom



Max Dimensions: 11'9" x 14'5"
Calculated Area: 159 sq. ft
Included: Yes

Heated: Yes
Finished: Yes
Enclosed: Yes
Contiguous: Yes
Permitted: Yes
Wet space: No
Addition: No
Conversion: No

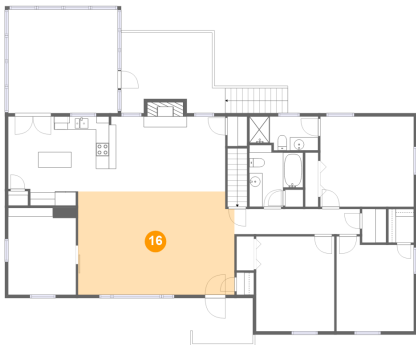
15 Floor 2 - Hall



Max Dimensions: 19'1" x 3'10"
Calculated Area: 73 sq. ft
Included: Yes

Heated: Yes
Finished: Yes
Enclosed: Yes
Contiguous: Yes
Permitted: Yes
Wet space: No
Addition: No
Conversion: No

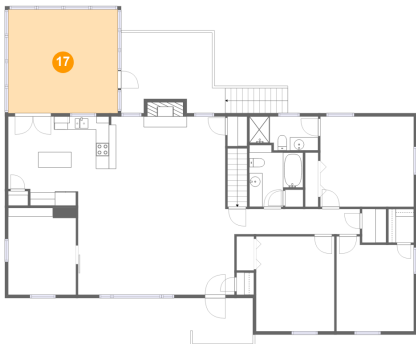
16 Floor 2 - Living Room



Max Dimensions: 23'9" x 15'8"
Calculated Area: 369 sq. ft
Included: Yes

Heated: Yes
Finished: Yes
Enclosed: Yes
Contiguous: Yes
Permitted: Yes
Wet space: No
Addition: No
Conversion: No

17 Floor 2 - Screened Porch



Max Dimensions: 16'8" x 15'9"
Calculated Area: 262 sq. ft
Included: No

Heated: No
Finished: Yes
Enclosed: No
Contiguous: Yes
Permitted: Yes
Wet space: No
Addition: No
Conversion: No

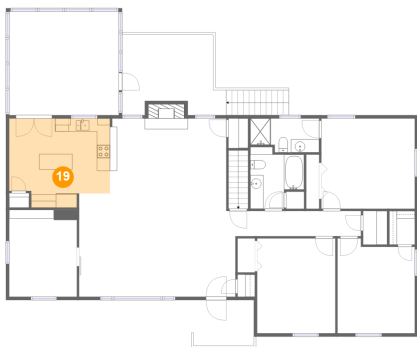
18 Floor 2 - Porch



Max Dimensions: 12'11" x 6'11"
Calculated Area: 82 sq. ft
Included: No

Heated: No
Finished: Yes
Enclosed: No
Contiguous: Yes
Permitted: Yes
Wet space: No
Addition: No
Conversion: No

19 Floor 2 - Kitchen



Max Dimensions: 15'4" x 13'6"
Calculated Area: 188 sq. ft
Included: Yes

Heated: Yes
Finished: Yes
Enclosed: Yes
Contiguous: Yes
Permitted: Yes
Wet space: No
Addition: No
Conversion: No

20 Floor 2 - Office



Max Dimensions: 10'3" x 13'2"
Calculated Area: 136 sq. ft
Included: Yes

Heated: Yes
Finished: Yes
Enclosed: Yes
Contiguous: Yes
Permitted: Yes
Wet space: No
Addition: No
Conversion: No