

Home data report

1095 Megan Ct, Templeton, CA, US



Total Area: 2122 sq. ft
1st Floor: 1058 sq. ft, 2nd Floor: 1064 sq. ft
Excluded: Garage 479 sq. ft, Balcony 45 sq. ft, Open to below 462 sq. ft, Walls: 194 sq. ft

Property summary

 **2** Floors

 **3** Bedrooms

 **2** Bathrooms

Home data report

1095 Megan Ct, Templeton, CA, US



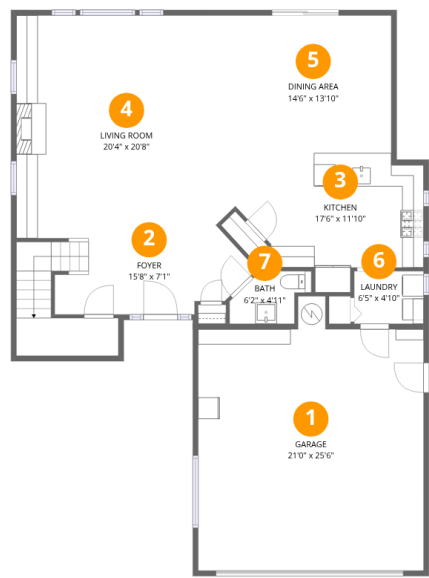
1
Half baths



1
Garages

Home data report

1095 Megan Ct, Templeton, CA, US



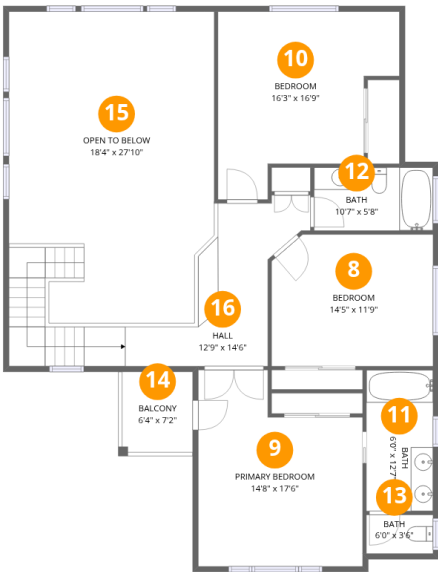
Room dimensions

Floor 1 Total:1058sqft Excluded: 479sqft

#		Dimensions	sqft	Counted as living area
1	Garage	21'0" x 25'6"	535 sq. ft	No
2	Foyer	15'8" x 7'1"	110 sq. ft	Yes
3	Kitchen	17'6" x 11'10"	207 sq. ft	Yes
4	Living Room	20'4" x 20'8"	421 sq. ft	Yes
5	Dining Area	14'6" x 13'10"	201 sq. ft	Yes
6	Laundry	6'5" x 4'10"	31 sq. ft	Yes
7	Bath	6'2" x 4'11"	30 sq. ft	Yes

Home data report

1095 Megan Ct, Templeton, CA, US

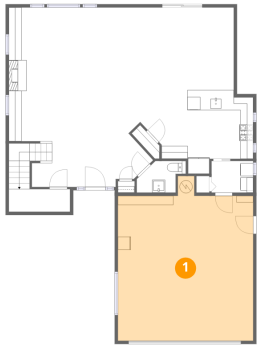


Room dimensions

Floor 2 Total:1064sqft Excluded: 507sqft

#		Dimensions	sqft	Counted as living area
8	Bedroom	14'5" x 11'9"	170 sq. ft	Yes
9	Primary Bedroom	14'8" x 17'6"	257 sq. ft	Yes
10	Bedroom	16'3" x 16'9"	272 sq. ft	Yes
11	Bath	6'0" x 12'7"	75 sq. ft	Yes
12	Bath	10'7" x 5'8"	60 sq. ft	Yes
13	Bath	6'0" x 3'6"	21 sq. ft	Yes
14	Balcony	6'4" x 7'2"	45 sq. ft	No
15	Open To Below	18'4" x 27'10"	509 sq. ft	No
16	Hall	12'9" x 14'6"	185 sq. ft	Yes

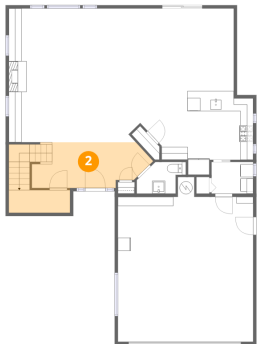
1 Floor 1 - Garage



Dimensions: 21'0" x 25'6"
Area: 535 sq. ft
Counted as living area: No

Heated: No
Finished: No
Enclosed: Yes
Contiguous: Yes
Permitted: Yes
Wet space: No
Addition: No
Conversion: No

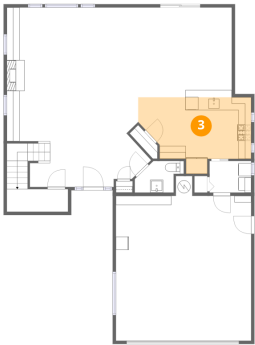
2 Floor 1 - Foyer



Dimensions: 15'8" x 7'1"
Area: 110 sq. ft
Counted as living area: Yes

Heated: Yes
Finished: Yes
Enclosed: Yes
Contiguous: Yes
Permitted: Yes
Wet space: No
Addition: No
Conversion: No

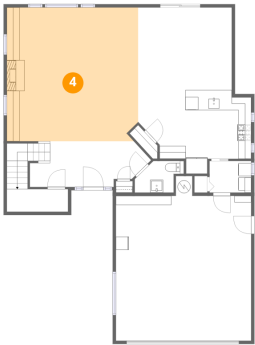
3 Floor 1 - Kitchen



Dimensions: 17'6" x 11'10"
Area: 207 sq. ft
Counted as living area: Yes

Heated: Yes
Finished: Yes
Enclosed: Yes
Contiguous: Yes
Permitted: Yes
Wet space: No
Addition: No
Conversion: No

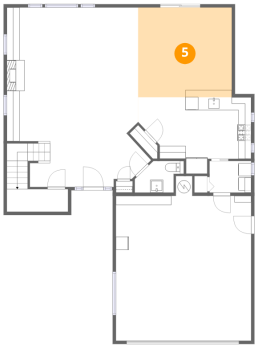
4 Floor 1 - Living Room



Dimensions: 20'4" x 20'8"
Area: 421 sq. ft
Counted as living area: Yes

Heated: Yes
Finished: Yes
Enclosed: Yes
Contiguous: Yes
Permitted: Yes
Wet space: No
Addition: No
Conversion: No

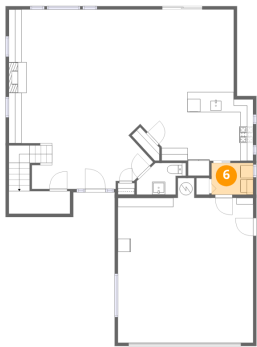
5 Floor 1 - Dining Area



Dimensions: 14'6" x 13'10"
Area: 201 sq. ft
Counted as living area: Yes

Heated: Yes
Finished: Yes
Enclosed: Yes
Contiguous: Yes
Permitted: Yes
Wet space: No
Addition: No
Conversion: No

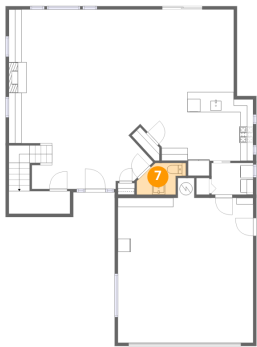
6 Floor 1 - Laundry



Dimensions: 6'5" x 4'10"
Area: 31 sq. ft
Counted as living area: Yes

Heated: Yes
Finished: Yes
Enclosed: Yes
Contiguous: Yes
Permitted: Yes
Wet space: No
Addition: No
Conversion: No

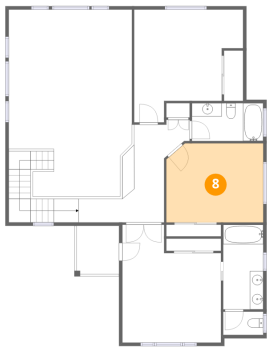
7 Floor 1 - Bath



Dimensions: 6'2" x 4'11"
Area: 30 sq. ft
Counted as living area: Yes

Heated: Yes
Finished: Yes
Enclosed: Yes
Contiguous: Yes
Permitted: Yes
Wet space: Yes
Addition: No
Conversion: No

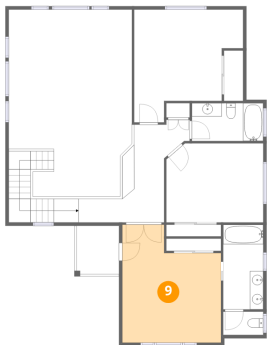
8 Floor 2 - Bedroom



Dimensions: 14'5" x 11'9"
Area: 170 sq. ft
Counted as living area: Yes

Heated: Yes
Finished: Yes
Enclosed: Yes
Contiguous: Yes
Permitted: Yes
Wet space: No
Addition: No
Conversion: No

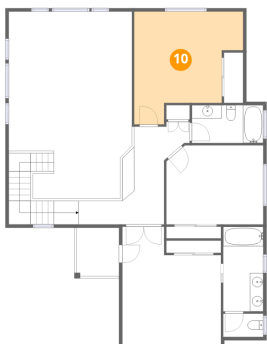
9 Floor 2 - Primary Bedroom



Dimensions: 14'8" x 17'6"
Area: 257 sq. ft
Counted as living area: Yes

Heated: Yes
Finished: Yes
Enclosed: Yes
Contiguous: Yes
Permitted: Yes
Wet space: No
Addition: No
Conversion: No

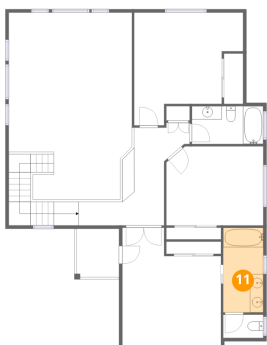
10 Floor 2 - Bedroom



Dimensions: 16'3" x 16'9"
Area: 272 sq. ft
Counted as living area: Yes

Heated: Yes
Finished: Yes
Enclosed: Yes
Contiguous: Yes
Permitted: Yes
Wet space: No
Addition: No
Conversion: No

11 Floor 2 - Bath



Dimensions: 6'0" x 12'7"
Area: 75 sq. ft
Counted as living area: Yes

Heated: Yes
Finished: Yes
Enclosed: Yes
Contiguous: Yes
Permitted: Yes
Wet space: Yes
Addition: No
Conversion: No

12 Floor 2 - Bath



Dimensions: 10'7" x 5'8"
Area: 60 sq. ft
Counted as living area: Yes

Heated: Yes
Finished: Yes
Enclosed: Yes
Contiguous: Yes
Permitted: Yes
Wet space: Yes
Addition: No
Conversion: No

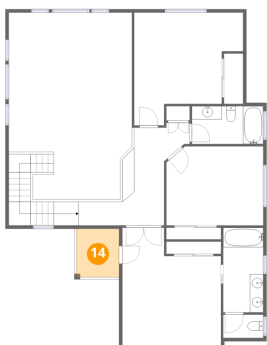
13 Floor 2 - Bath



Dimensions: 6'0" x 3'6"
Area: 21 sq. ft
Counted as living area: Yes

Heated: Yes
Finished: Yes
Enclosed: Yes
Contiguous: Yes
Permitted: Yes
Wet space: Yes
Addition: No
Conversion: No

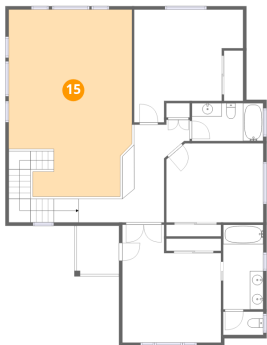
14 Floor 2 - Balcony



Dimensions: 6'4" x 7'2"
Area: 45 sq. ft
Counted as living area: No

Heated: No
Finished: No
Enclosed: No
Contiguous: Yes
Permitted: Yes
Wet space: No
Addition: No
Conversion: No

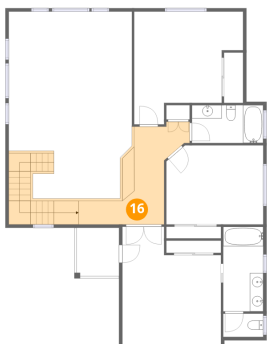
15 Floor 2 - Open To Below



Dimensions: 18'4" x 27'10"
Area: 509 sq. ft
Counted as living area: No

Heated: No
Finished: No
Enclosed: No
Contiguous: Yes
Permitted: No
Wet space: No
Addition: No
Conversion: No

16 Floor 2 - Hall



Dimensions: 12'9" x 14'6"
Area: 185 sq. ft
Counted as living area: Yes

Heated: Yes
Finished: Yes
Enclosed: Yes
Contiguous: Yes
Permitted: Yes
Wet space: No
Addition: No
Conversion: No