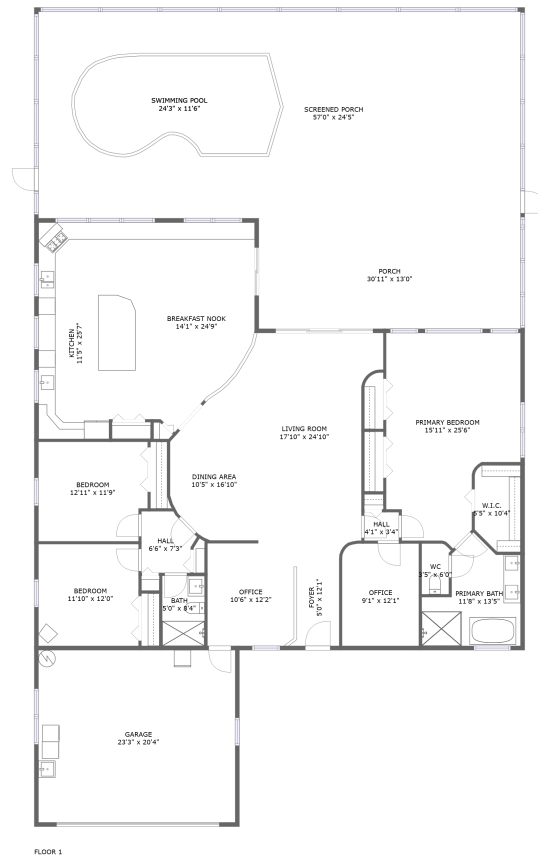



1710 Grand Central Drive, Parkside Colony, Tarpon Springs, Pinellas County, Florida, United



Property summary

 **1** Garages

 **3** Bedrooms

 **2** Bathrooms

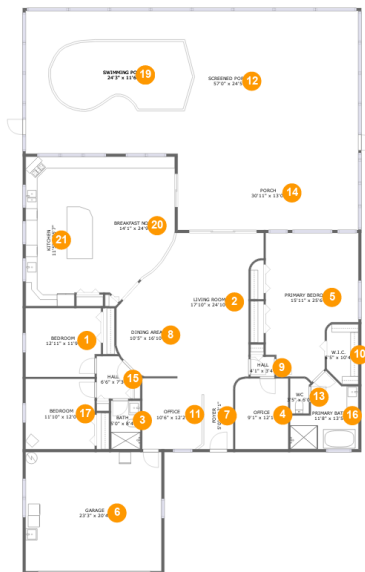
 **0** Half baths

 **1** Floors

 **2,557**
Gross living
area sqft

 **4,668**
Total sqft

1710 Grand Central Drive, Parkside Colony, Tarpon Springs, Pinellas County, Florida, United



Room dimensions

Floor 1

Total sqft: 4668

Living area: 2557

#		Dimensions	sqft	Counted as living area
1	Bedroom	12'11" x 11'9"	148 sq. ft	Yes
2	Living Room	17'10" x 24'10"	356 sq. ft	Yes
3	Bath	5'0" x 8'4"	42 sq. ft	Yes
4	Office	9'1" x 12'1"	109 sq. ft	Yes
5	Bedroom	15'11" x 25'6"	330 sq. ft	Yes
6	Garage	23'3" x 20'4"	474 sq. ft	No
7	Entry	5'0" x 12'1"	61 sq. ft	Yes
8	Dining Room	10'5" x 16'10"	130 sq. ft	Yes
9	Hall	4'1" x 3'4"	14 sq. ft	Yes
10	Cl	5'5" x 10'4"	52 sq. ft	Yes
11	Office	10'6" x 12'2"	128 sq. ft	Yes

Scan captured on Thu, 31 Oct 2024 02:27:46 GMT

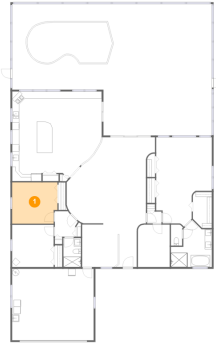
Information is calculated by Cubicasa technology deemed highly reliable but not guaranteed.

**1710 Grand Central Drive, Parkside Colony,
Tarpon Springs, Pinellas County, Florida, United**

#		Dimensions	sqft	Counted as living area
12	Outdoor	57'0" x 24'5"	1392 sq. ft	No
13	Bath	3'5" x 6'0"	19 sq. ft	Yes
14	Outdoor	30'11" x 13'0"	404 sq. ft	No
15	Hall	6'6" x 7'3"	41 sq. ft	Yes
16	Bath	11'8" x 13'5"	115 sq. ft	Yes
17	Bedroom	11'10" x 12'0"	142 sq. ft	Yes
18	Swimming Pool	24'3" x 11'6"	244 sq. ft	No
19	Swimming Pool	24'3" x 11'6"	244 sq. ft	No
20	Nook	14'1" x 24'9"	300 sq. ft	Yes
21	Kitchen	11'5" x 25'7"	286 sq. ft	Yes

1710 Grand Central Drive, Parkside Colony, Tarpon Springs, Pinellas County, Florida, United

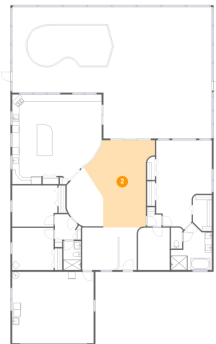
1 Floor 1 - Bedroom



Dimensions: 12'11" x 11'9"
Area: 148 sq. ft
Counted as living area: Yes

Heated: Yes
Finished: Yes
Enclosed: Yes
Contiguous: Yes
Permitted: Yes
Wet space: No
Addition: No
Conversion: No

2 Floor 1 - Living Room

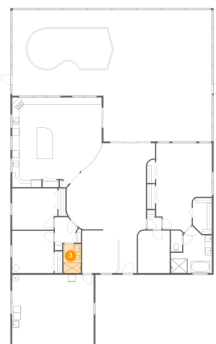


Dimensions: 17'10" x 24'10"
Area: 356 sq. ft
Counted as living area: Yes

Heated: Yes
Finished: Yes
Enclosed: Yes
Contiguous: Yes
Permitted: Yes
Wet space: No
Addition: No
Conversion: No

1710 Grand Central Drive, Parkside Colony, Tarpon Springs, Pinellas County, Florida, United

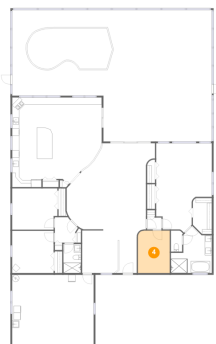
3 Floor 1 - Bath



Dimensions: 5'0" x 8'4"
Area: 42 sq. ft
Counted as living area: Yes

Heated: Yes
Finished: Yes
Enclosed: Yes
Contiguous: Yes
Permitted: Yes
Wet space: Yes
Addition: No
Conversion: No

4 Floor 1 - Office



Dimensions: 9'1" x 12'1"
Area: 109 sq. ft
Counted as living area: Yes

Heated: Yes
Finished: Yes
Enclosed: Yes
Contiguous: Yes
Permitted: Yes
Wet space: No
Addition: No
Conversion: No

5 Floor 1 - Bedroom



Dimensions: 15'11" x 25'6"
Area: 330 sq. ft
Counted as living area: Yes

Heated: Yes
Finished: Yes
Enclosed: Yes
Contiguous: Yes
Permitted: Yes
Wet space: No
Addition: No
Conversion: No

1710 Grand Central Drive, Parkside Colony, Tarpon Springs, Pinellas County, Florida, United

6 Floor 1 - Garage



Dimensions: 23'3" x 20'4"
Area: 474 sq. ft
Counted as living area: No

Heated: No
Finished: No
Enclosed: Yes
Contiguous: Yes
Permitted: Yes
Wet space: No
Addition: No
Conversion: No

7 Floor 1 - Entry



Dimensions: 5'0" x 12'1"
Area: 61 sq. ft
Counted as living area: Yes

Heated: Yes
Finished: Yes
Enclosed: Yes
Contiguous: Yes
Permitted: Yes
Wet space: No
Addition: No
Conversion: No

8 Floor 1 - Dining Room

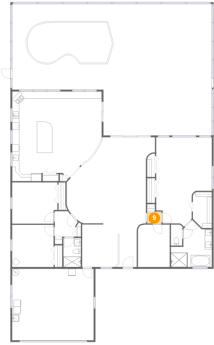


Dimensions: 10'5" x 16'10"
Area: 130 sq. ft
Counted as living area: Yes

Heated: Yes
Finished: Yes
Enclosed: Yes
Contiguous: Yes
Permitted: Yes
Wet space: No
Addition: No
Conversion: No

1710 Grand Central Drive, Parkside Colony, Tarpon Springs, Pinellas County, Florida, United

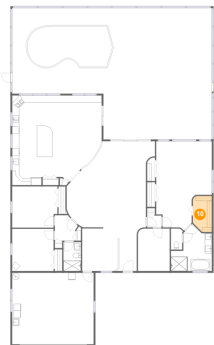
9 Floor 1 - Hall



Dimensions: 4'1" x 3'4"
Area: 14 sq. ft
Counted as living area: Yes

Heated: Yes
Finished: Yes
Enclosed: Yes
Contiguous: Yes
Permitted: Yes
Wet space: No
Addition: No
Conversion: No

10 Floor 1 - Cl



Dimensions: 5'5" x 10'4"
Area: 52 sq. ft
Counted as living area: Yes

Heated: Yes
Finished: Yes
Enclosed: Yes
Contiguous: Yes
Permitted: Yes
Wet space: No
Addition: No
Conversion: No

11 Floor 1 - Office

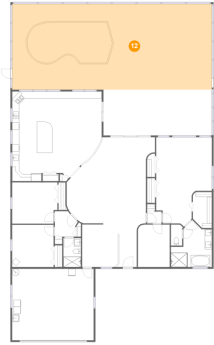


Dimensions: 10'6" x 12'2"
Area: 128 sq. ft
Counted as living area: Yes

Heated: Yes
Finished: Yes
Enclosed: Yes
Contiguous: Yes
Permitted: Yes
Wet space: No
Addition: No
Conversion: No

1710 Grand Central Drive, Parkside Colony, Tarpon Springs, Pinellas County, Florida, United

12 Floor 1 - Outdoor



Dimensions: 57'0" x 24'5"
Area: 1392 sq. ft
Counted as living area: No

Heated: No
Finished: Yes
Enclosed: No
Contiguous: Yes
Permitted: Yes
Wet space: No
Addition: No
Conversion: No

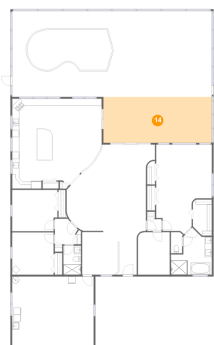
13 Floor 1 - Bath



Dimensions: 3'5" x 6'0"
Area: 19 sq. ft
Counted as living area: Yes

Heated: Yes
Finished: Yes
Enclosed: Yes
Contiguous: Yes
Permitted: Yes
Wet space: Yes
Addition: No
Conversion: No

14 Floor 1 - Outdoor

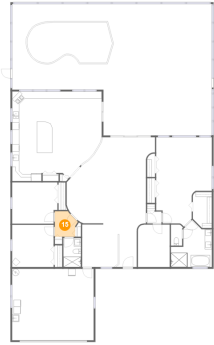


Dimensions: 30'11" x 13'0"
Area: 404 sq. ft
Counted as living area: No

Heated: No
Finished: Yes
Enclosed: No
Contiguous: Yes
Permitted: Yes
Wet space: No
Addition: No
Conversion: No

1710 Grand Central Drive, Parkside Colony, Tarpon Springs, Pinellas County, Florida, United

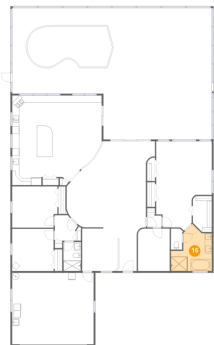
15 Floor 1 - Hall



Dimensions: 6'6" x 7'3"
Area: 41 sq. ft
Counted as living area: Yes

Heated: Yes
Finished: Yes
Enclosed: Yes
Contiguous: Yes
Permitted: Yes
Wet space: No
Addition: No
Conversion: No

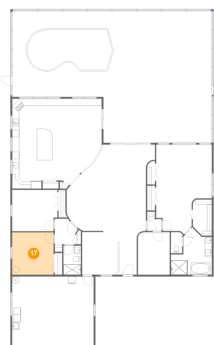
16 Floor 1 - Bath



Dimensions: 11'8" x 13'5"
Area: 115 sq. ft
Counted as living area: Yes

Heated: Yes
Finished: Yes
Enclosed: Yes
Contiguous: Yes
Permitted: Yes
Wet space: Yes
Addition: No
Conversion: No

17 Floor 1 - Bedroom



Dimensions: 11'10" x 12'0"
Area: 142 sq. ft
Counted as living area: Yes

Heated: Yes
Finished: Yes
Enclosed: Yes
Contiguous: Yes
Permitted: Yes
Wet space: No
Addition: No
Conversion: No

1710 Grand Central Drive, Parkside Colony, Tarpon Springs, Pinellas County, Florida, United

18 Floor 1 - Swimming Pool



Dimensions: 24'3" x 11'6"
Area: 244 sq. ft
Counted as living area: No

Heated: No
Finished: No
Enclosed: No
Contiguous: Yes
Permitted: No
Wet space: No
Addition: No
Conversion: No

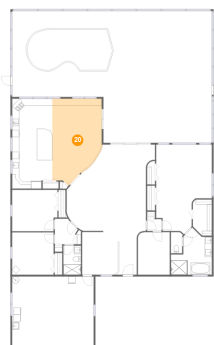
19 Floor 1 - Swimming Pool



Dimensions: 24'3" x 11'6"
Area: 244 sq. ft
Counted as living area: No

Heated: No
Finished: No
Enclosed: No
Contiguous: Yes
Permitted: No
Wet space: No
Addition: No
Conversion: No

20 Floor 1 - Nook

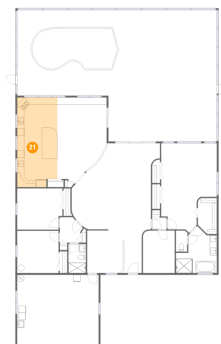


Dimensions: 14'1" x 24'9"
Area: 300 sq. ft
Counted as living area: Yes

Heated: Yes
Finished: Yes
Enclosed: Yes
Contiguous: Yes
Permitted: Yes
Wet space: No
Addition: No
Conversion: No

1710 Grand Central Drive, Parkside Colony, Tarpon Springs, Pinellas County, Florida, United

21 Floor 1 - Kitchen



Dimensions: 11'5" x 25'7"
Area: 286 sq. ft
Counted as living area: Yes

Heated: Yes
Finished: Yes
Enclosed: Yes
Contiguous: Yes
Permitted: Yes
Wet space: No
Addition: No
Conversion: No