

35 Marble Road, Spencer, Worcester County, Massachusetts, United States, 01562



Property Summary

0 garages **3** bedrooms **2** bathrooms **1** half baths

3 floors

2,313 Gross Living Area sqft

3,953 total sqft

35 Marble Road, Spencer, Worcester County, Massachusetts, United States, 01562



Room Dimensions

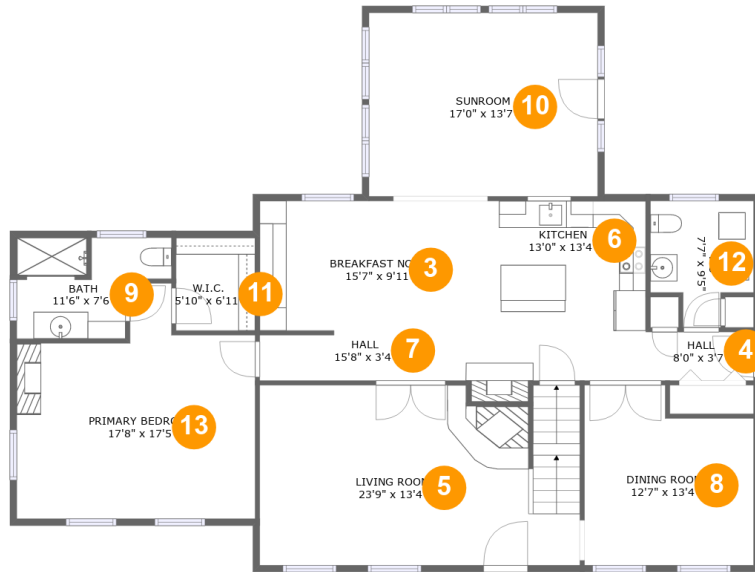
Floor 1

Total sqft: 1613

Living area: 0

#	Room name	Dimensions	Area (sqft)	Counted as Living Area
1	Basement	38'8" x 40'2"	1225 sq. ft	No
2	Family Room	15'8" x 18'3"	285 sq. ft	No

35 Marble Road, Spencer, Worcester County, Massachusetts, United States, 01562



Room Dimensions

Floor 2

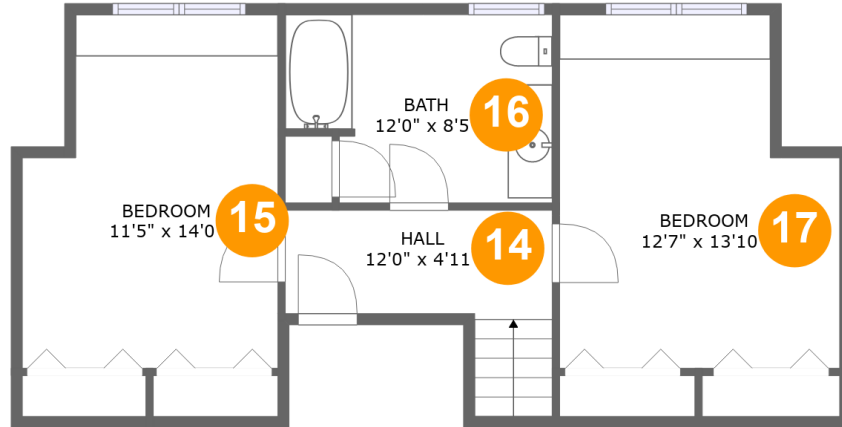
Total sqft: 1697

Living area: 1697

#	Room name	Dimensions	Area (sqft)	Counted as Living Area
3	Breakfast Nook	15'7" x 9'11"	154 sq. ft	Yes
4	Hall	8'0" x 3'7"	29 sq. ft	Yes
5	Living Room	23'9" x 13'4"	308 sq. ft	Yes
6	Kitchen	13'0" x 13'4"	180 sq. ft	Yes
7	Hall	15'8" x 3'4"	53 sq. ft	Yes
8	Dining Room	12'7" x 13'4"	151 sq. ft	Yes
9	Bath	11'6" x 7'6"	69 sq. ft	Yes
10	Sunroom	17'0" x 13'7"	232 sq. ft	Yes
11	W.i.c.	5'10" x 6'11"	40 sq. ft	Yes
12	Wc	7'7" x 9'5"	59 sq. ft	Yes
13	Primary Bedroom	17'8" x 17'5"	247 sq. ft	Yes

Scan captured on Mon, 05 Aug 2024 15:29:16 GMT

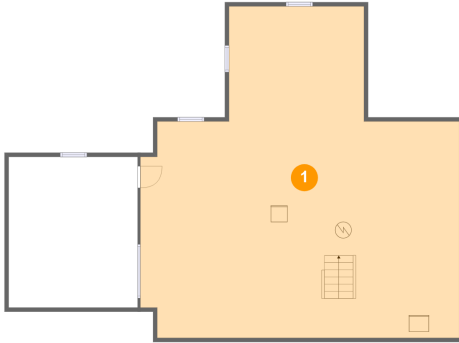
Information is calculated by CubiCasa technology; deemed highly reliable but not guaranteed.

**35 Marble Road, Spencer, Worcester County,
Massachusetts, United States, 01562****Room Dimensions****Floor 3****Total sqft: 643****Living area: 616**

#	Room name	Dimensions	Area (sqft)	Counted as Living Area
14	Hall	12'0" x 4'11"	71 sq. ft	Yes
15	Bedroom	11'5" x 14'0"	157 sq. ft	Yes
16	Bath	12'0" x 8'5"	93 sq. ft	Yes
17	Bedroom	12'7" x 13'10"	167 sq. ft	Yes

35 Marble Road, Spencer, Worcester County, Massachusetts, United States, 01562

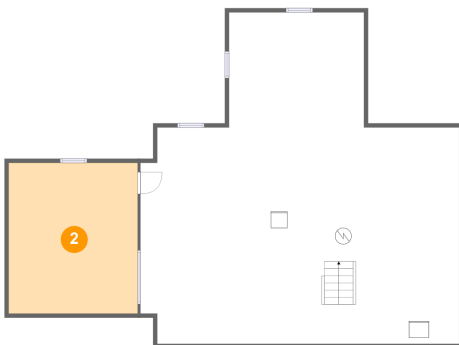
1 Floor 1 - Basement



Dimensions: 38'8" x 40'2"
Area: 1225 sq. ft
Counted as Living Area: No

Heated: No
Finished: No
Enclosed: No
Contiguous: Yes
Permitted: Yes
Wet Space: No
Addition: No
Conversion: No

2 Floor 1 - Family Room

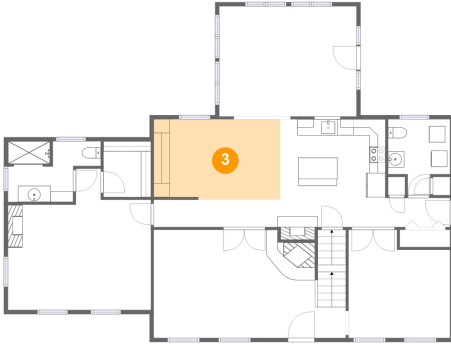


Dimensions: 15'8" x 18'3"
Area: 285 sq. ft
Counted as Living Area: No

Heated: Yes
Finished: Yes
Enclosed: Yes
Contiguous: No
Permitted: Yes
Wet Space: No
Addition: No
Conversion: No

35 Marble Road, Spencer, Worcester County, Massachusetts, United States, 01562

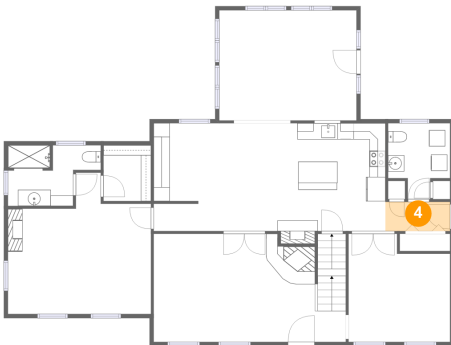
3 Floor 2 - Breakfast Nook



Dimensions: 15'7" x 9'11"
Area: 154 sq. ft
Counted as Living Area:
Yes

Heated: Yes
Finished: Yes
Enclosed: Yes
Contiguous:
Yes
Permitted: Yes
Wet Space: No
Addition: No
Conversion: No

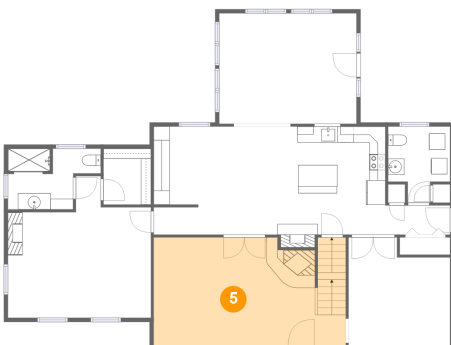
4 Floor 2 - Hall



Dimensions: 8'0" x 3'7"
Area: 29 sq. ft
Counted as Living Area:
Yes

Heated: Yes
Finished: Yes
Enclosed: Yes
Contiguous:
Yes
Permitted: Yes
Wet Space: No
Addition: No
Conversion: No

5 Floor 2 - Living Room

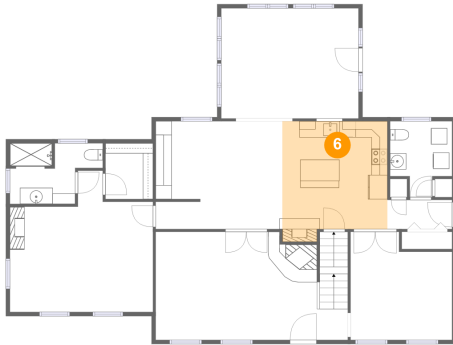


Dimensions: 23'9" x 13'4"
Area: 308 sq. ft
Counted as Living Area:
Yes

Heated: Yes
Finished: Yes
Enclosed: Yes
Contiguous:
Yes
Permitted: Yes
Wet Space: No
Addition: No
Conversion: No

35 Marble Road, Spencer, Worcester County, Massachusetts, United States, 01562

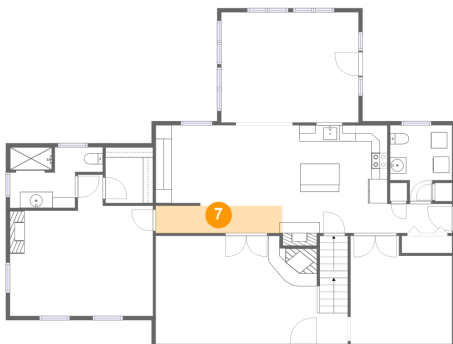
6 Floor 2 - Kitchen



Dimensions: 13'0" x 13'4"
Area: 180 sq. ft
Counted as Living Area:
Yes

Heated: Yes
Finished: Yes
Enclosed: Yes
Contiguous:
Yes
Permitted: Yes
Wet Space: No
Addition: No
Conversion: No

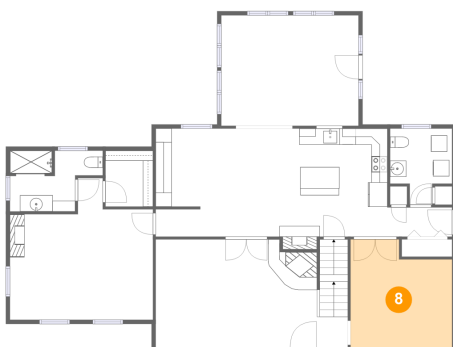
7 Floor 2 - Hall



Dimensions: 15'8" x 3'4"
Area: 53 sq. ft
Counted as Living Area:
Yes

Heated: Yes
Finished: Yes
Enclosed: Yes
Contiguous:
Yes
Permitted: Yes
Wet Space: No
Addition: No
Conversion: No

8 Floor 2 - Dining Room

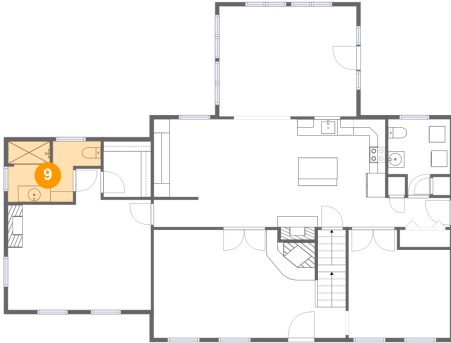


Dimensions: 12'7" x 13'4"
Area: 151 sq. ft
Counted as Living Area:
Yes

Heated: Yes
Finished: Yes
Enclosed: Yes
Contiguous:
Yes
Permitted: Yes
Wet Space: No
Addition: No
Conversion: No

35 Marble Road, Spencer, Worcester County, Massachusetts, United States, 01562

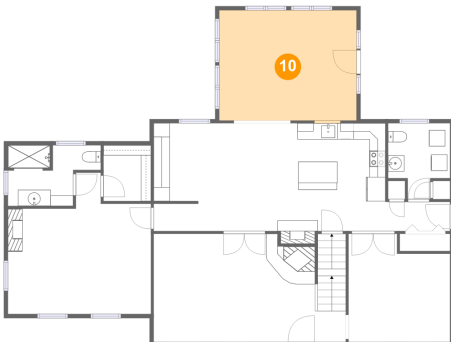
9 Floor 2 - Bath



Dimensions: 11'6" x 7'6"
Area: 69 sq. ft
Counted as Living Area:
Yes

Heated: Yes
Finished: Yes
Enclosed: Yes
Contiguous:
Yes
Permitted: Yes
Wet Space: Yes
Addition: No
Conversion: No

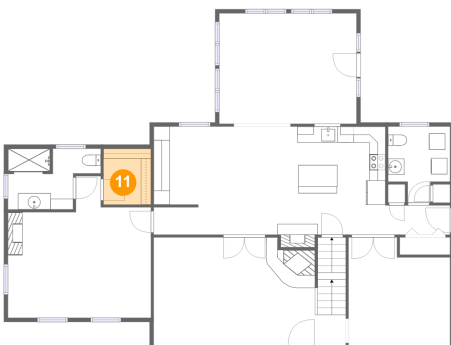
10 Floor 2 - Sunroom



Dimensions: 17'0" x 13'7"
Area: 232 sq. ft
Counted as Living Area:
Yes

Heated: Yes
Finished: Yes
Enclosed: Yes
Contiguous:
Yes
Permitted: Yes
Wet Space: No
Addition: No
Conversion: No

11 Floor 2 - W.i.c.



Dimensions: 5'10" x 6'11"
Area: 40 sq. ft
Counted as Living Area:
Yes

Heated: Yes
Finished: Yes
Enclosed: Yes
Contiguous:
Yes
Permitted: Yes
Wet Space: No
Addition: No
Conversion: No

35 Marble Road, Spencer, Worcester County, Massachusetts, United States, 01562

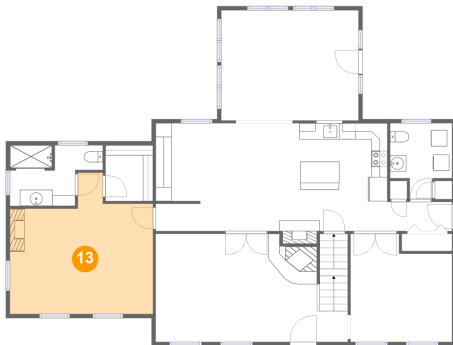
12 Floor 2 - Wc



Dimensions: 7'7" x 9'5"
Area: 59 sq. ft
Counted as Living Area:
Yes

Heated: Yes
Finished: Yes
Enclosed: Yes
Contiguous:
Yes
Permitted: Yes
Wet Space: Yes
Addition: No
Conversion: No

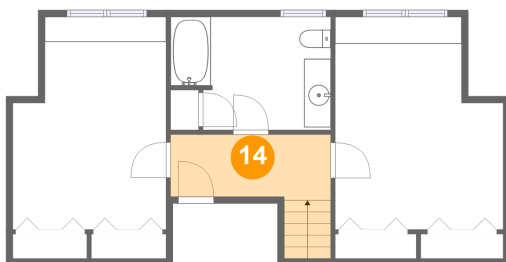
13 Floor 2 - Primary Bedroom



Dimensions: 17'8" x 17'5"
Area: 247 sq. ft
Counted as Living Area:
Yes

Heated: Yes
Finished: Yes
Enclosed: Yes
Contiguous:
Yes
Permitted: Yes
Wet Space: No
Addition: No
Conversion: No

14 Floor 3 - Hall

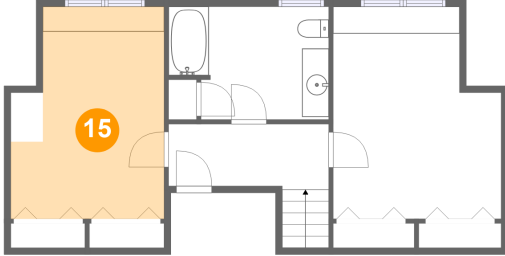


Dimensions: 12'0" x 4'11"
Area: 71 sq. ft
Counted as Living Area:
Yes

Heated: Yes
Finished: Yes
Enclosed: Yes
Contiguous:
Yes
Permitted: Yes
Wet Space: No
Addition: No
Conversion: No

**35 Marble Road, Spencer, Worcester County,
Massachusetts, United States, 01562**

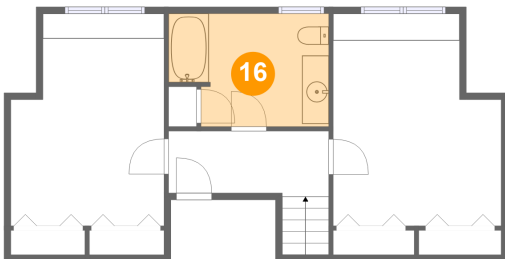
15 Floor 3 - Bedroom



Dimensions: 11'5" x 14'0"
Area: 157 sq. ft
Counted as Living Area:
Yes

Heated: Yes
Finished: Yes
Enclosed: Yes
Contiguous:
Yes
Permitted: Yes
Wet Space: No
Addition: No
Conversion: No

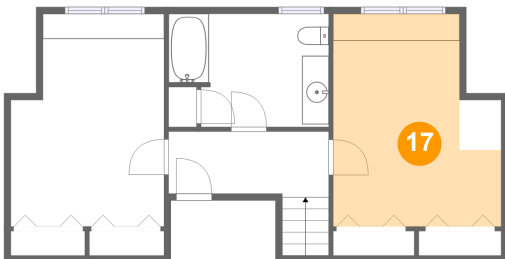
16 Floor 3 - Bath



Dimensions: 12'0" x 8'5"
Area: 93 sq. ft
Counted as Living Area:
Yes

Heated: Yes
Finished: Yes
Enclosed: Yes
Contiguous:
Yes
Permitted: Yes
Wet Space: Yes
Addition: No
Conversion: No

17 Floor 3 - Bedroom



Dimensions: 12'7" x 13'10"
Area: 167 sq. ft
Counted as Living Area:
Yes

Heated: Yes
Finished: Yes
Enclosed: Yes
Contiguous:
Yes
Permitted: Yes
Wet Space: No
Addition: No
Conversion: No