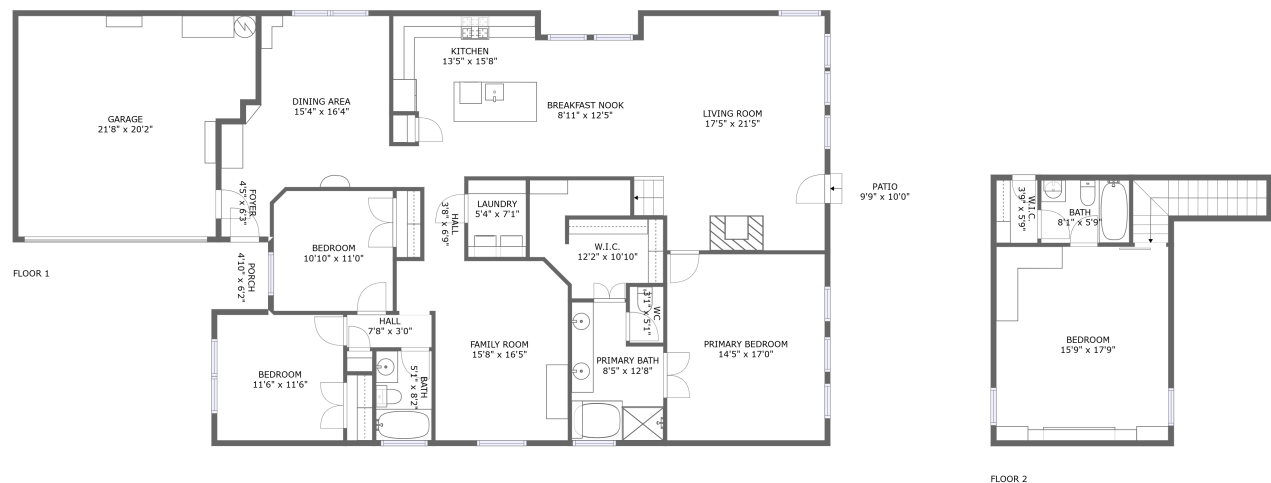




Home report


4208 Temecula Creek Trail, Craig Ranch, McKinney, Collin County, Texas, United States, 75070





Property summary


 **1** Garages


 **4** Bedrooms

 **3** Bathrooms

 **0** Half baths

 **2** Floors

 **2,605** Gross living area sqft

 **3,159** Total sqft

Home report

4208 Temecula Creek Trail, Craig Ranch, McKinney, Collin County, Texas, United States, 75070



Room dimensions

Floor 1 Total sqft: 2707 Living area: 2153

#		Max Dimensions	sqft	Included
1	Porch	4'10" x 6'2"	30 sq. ft	No
2	Patio	9'9" x 10'0"	98 sq. ft	No
3	WC	3'1" x 5'1"	16 sq. ft	Yes
4	Dining Area	15'4" x 16'4"	200 sq. ft	Yes
5	Breakfast Nook	8'11" x 12'5"	111 sq. ft	Yes
6	Hall	3'8" x 6'9"	25 sq. ft	Yes
7	Foyer	4'5" x 6'3"	28 sq. ft	Yes
8	W.I.C.	12'2" x 10'10"	102 sq. ft	Yes
9	Bedroom	10'10" x 11'0"	119 sq. ft	Yes
10	Kitchen	13'5" x 15'8"	192 sq. ft	Yes
11	Family Room	15'8" x 16'5"	212 sq. ft	Yes

Home report

4208 Temecula Creek Trail, Craig Ranch, McKinney, Collin County, Texas, United States, 75070

#		Max Dimensions	sqft	Included
12	Living Room	17'5" x 21'5"	362 sq. ft	Yes
13	Bedroom	11'6" x 11'6"	132 sq. ft	Yes
14	Laundry	5'4" x 7'1"	37 sq. ft	Yes
15	Hall	7'8" x 3'0"	23 sq. ft	Yes
16	Primary Bath	8'5" x 12'8"	92 sq. ft	Yes
17	Primary Bedroom	14'5" x 17'0"	245 sq. ft	Yes
18	Garage	21'8" x 20'2"	396 sq. ft	No
19	Bath	5'1" x 8'2"	41 sq. ft	Yes

Home report

4208 Temecula Creek Trail, Craig Ranch, McKinney, Collin County, Texas, United States, 75070



Room dimensions

Floor 2 Total sqft: 452 Living area: 452

#		Max Dimensions	sqft	Included
20	Bedroom	15'9" x 17'9"	278 sq. ft	Yes
21	Bath	8'1" x 5'9"	46 sq. ft	Yes
22	W.I.C.	3'9" x 5'9"	22 sq. ft	Yes

4208 Temecula Creek Trail, Craig Ranch, McKinney, Collin
County, Texas, United States, 75070

1 Floor 1 - Porch



Max Dimensions: 4'10" x 6'2"
Calculated Area: 30 sq. ft
Included: No

Heated: No
Finished: Yes
Enclosed: No
Contiguous: Yes
Permitted: Yes
Wet space: No
Addition: No
Conversion: No

2 Floor 1 - Patio



Max Dimensions: 9'9" x 10'0"
Calculated Area: 98 sq. ft
Included: No

Heated: No
Finished: Yes
Enclosed: No
Contiguous: Yes
Permitted: Yes
Wet space: No
Addition: No
Conversion: No

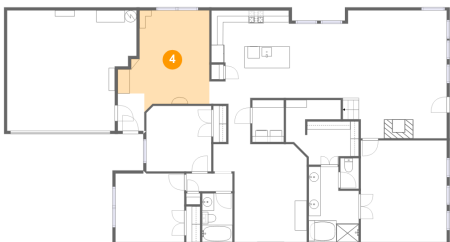
3 Floor 1 - WC



Max Dimensions: 3'1" x 5'1"
Calculated Area: 16 sq. ft
Included: Yes

Heated: Yes
Finished: Yes
Enclosed: Yes
Contiguous: Yes
Permitted: Yes
Wet space: Yes
Addition: No
Conversion: No

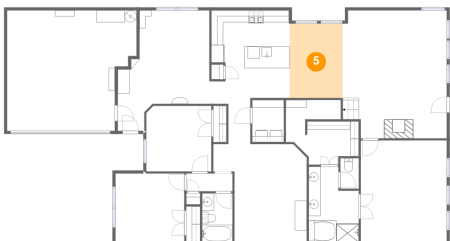
4 Floor 1 - Dining Area



Max Dimensions: 15'4" x 16'4"
Calculated Area: 200 sq. ft
Included: Yes

Heated: Yes
Finished: Yes
Enclosed: Yes
Contiguous: Yes
Permitted: Yes
Wet space: No
Addition: No
Conversion: No

5 Floor 1 - Breakfast Nook



Max Dimensions: 8'11" x 12'5"
Calculated Area: 111 sq. ft
Included: Yes

Heated: Yes
Finished: Yes
Enclosed: Yes
Contiguous: Yes
Permitted: Yes
Wet space: No
Addition: No
Conversion: No

4208 Temecula Creek Trail, Craig Ranch, McKinney, Collin
County, Texas, United States, 75070

6 Floor 1 - Hall



Max Dimensions: 3'8" x 6'9"
Calculated Area: 25 sq. ft
Included: Yes

Heated: Yes
Finished: Yes
Enclosed: Yes
Contiguous: Yes
Permitted: Yes
Wet space: No
Addition: No
Conversion: No

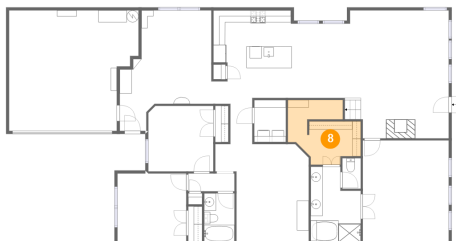
7 Floor 1 - Foyer



Max Dimensions: 4'5" x 6'3"
Calculated Area: 28 sq. ft
Included: Yes

Heated: Yes
Finished: Yes
Enclosed: Yes
Contiguous: Yes
Permitted: Yes
Wet space: No
Addition: No
Conversion: No

8 Floor 1 - W.I.C.



Max Dimensions: 12'2" x
10'10"
Calculated Area: 102 sq. ft
Included: Yes

Heated: Yes
Finished: Yes
Enclosed: Yes
Contiguous:
Yes
Permitted: Yes
Wet space: No
Addition: No
Conversion: No

4208 Temecula Creek Trail, Craig Ranch, McKinney, Collin
County, Texas, United States, 75070

9 Floor 1 - Bedroom



Max Dimensions: 10'10" x 11'0"
Calculated Area: 119 sq. ft
Included: Yes

Heated: Yes
Finished: Yes
Enclosed: Yes
Contiguous: Yes
Permitted: Yes
Wet space: No
Addition: No
Conversion: No

10 Floor 1 - Kitchen



Max Dimensions: 13'5" x 15'8"
Calculated Area: 192 sq. ft
Included: Yes

Heated: Yes
Finished: Yes
Enclosed: Yes
Contiguous: Yes
Permitted: Yes
Wet space: No
Addition: No
Conversion: No

11 Floor 1 - Family Room



Max Dimensions: 15'8" x 16'5"
Calculated Area: 212 sq. ft
Included: Yes

Heated: Yes
Finished: Yes
Enclosed: Yes
Contiguous: Yes
Permitted: Yes
Wet space: No
Addition: No
Conversion: No

4208 Temecula Creek Trail, Craig Ranch, McKinney, Collin
County, Texas, United States, 75070

12 Floor 1 - Living Room



Max Dimensions: 17'5" x 21'5"
Calculated Area: 362 sq. ft
Included: Yes

Heated: Yes
Finished: Yes
Enclosed: Yes
Contiguous: Yes
Permitted: Yes
Wet space: No
Addition: No
Conversion: No

13 Floor 1 - Bedroom



Max Dimensions: 11'6" x 11'6"
Calculated Area: 132 sq. ft
Included: Yes

Heated: Yes
Finished: Yes
Enclosed: Yes
Contiguous: Yes
Permitted: Yes
Wet space: No
Addition: No
Conversion: No

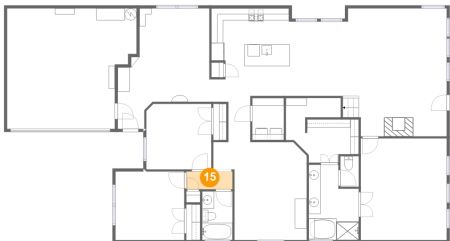
14 Floor 1 - Laundry



Max Dimensions: 5'4" x 7'1"
Calculated Area: 37 sq. ft
Included: Yes

Heated: Yes
Finished: Yes
Enclosed: Yes
Contiguous: Yes
Permitted: Yes
Wet space: No
Addition: No
Conversion: No

15 Floor 1 - Hall



Max Dimensions: 7'8" x 3'0"
Calculated Area: 23 sq. ft
Included: Yes

Heated: Yes
Finished: Yes
Enclosed: Yes
Contiguous: Yes
Permitted: Yes
Wet space: No
Addition: No
Conversion: No

16 Floor 1 - Primary Bath



Max Dimensions: 8'5" x 12'8"
Calculated Area: 92 sq. ft
Included: Yes

Heated: Yes
Finished: Yes
Enclosed: Yes
Contiguous: Yes
Permitted: Yes
Wet space: Yes
Addition: No
Conversion: No

17 Floor 1 - Primary Bedroom



Max Dimensions: 14'5" x 17'0"
Calculated Area: 245 sq. ft
Included: Yes

Heated: Yes
Finished: Yes
Enclosed: Yes
Contiguous: Yes
Permitted: Yes
Wet space: No
Addition: No
Conversion: No

18 Floor 1 - Garage



Max Dimensions: 21'8" x 20'2"
Calculated Area: 396 sq. ft
Included: No

Heated: No
Finished: No
Enclosed: Yes
Contiguous: Yes
Permitted: Yes
Wet space: No
Addition: No
Conversion: No

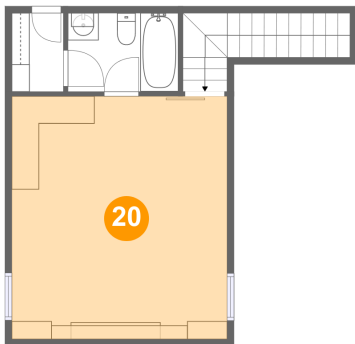
19 Floor 1 - Bath



Max Dimensions: 5'1" x 8'2"
Calculated Area: 41 sq. ft
Included: Yes

Heated: Yes
Finished: Yes
Enclosed: Yes
Contiguous: Yes
Permitted: Yes
Wet space: Yes
Addition: No
Conversion: No

20 Floor 2 - Bedroom

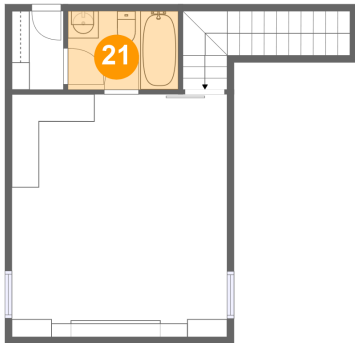


Max Dimensions: 15'9" x 17'9"
Calculated Area: 278 sq. ft
Included: Yes

Heated: Yes
Finished: Yes
Enclosed: Yes
Contiguous: Yes
Permitted: Yes
Wet space: No
Addition: No
Conversion: No

4208 Temecula Creek Trail, Craig Ranch, McKinney, Collin
County, Texas, United States, 75070

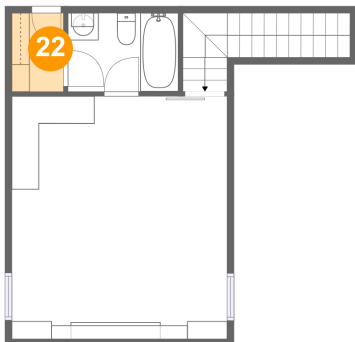
21 Floor 2 - Bath



Max Dimensions: 8'1" x 5'9"
Calculated Area: 46 sq. ft
Included: Yes

Heated: Yes
Finished: Yes
Enclosed: Yes
Contiguous: Yes
Permitted: Yes
Wet space: Yes
Addition: No
Conversion: No

22 Floor 2 - W.I.C.



Max Dimensions: 3'9" x 5'9"
Calculated Area: 22 sq. ft
Included: Yes

Heated: Yes
Finished: Yes
Enclosed: Yes
Contiguous: Yes
Permitted: Yes
Wet space: No
Addition: No
Conversion: No