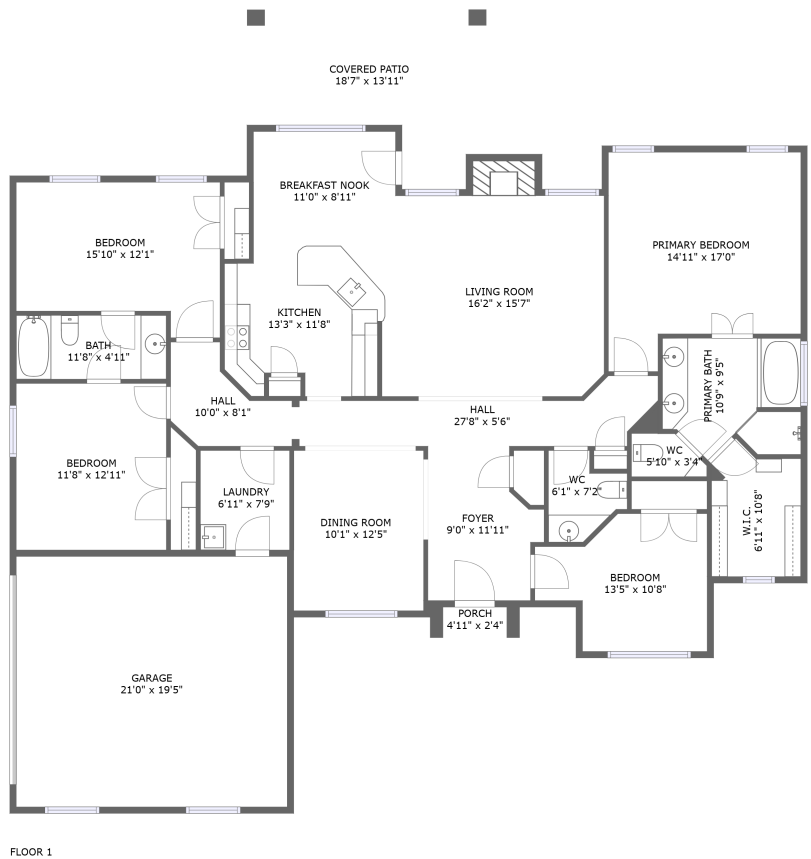


Home report

15681 County Road 1104, Flint, Smith County, Texas, United States, 75762




Total Area: 1989 sq. ft


Floor 1: 1989 sq. ft

Excluded: Garage 409 sq. ft, Covered patio 195 sq. ft, Porch 12 sq. ft, Fireplace 16 sq. ft, Walls: 131 sq. ft

Property summary

 1 Floors

 4 Bedrooms

 2 Bathrooms

Home report

**15681 County Road 1104, Flint, Smith County, Texas, United States, 75762**



**1**  
Half baths



**1**  
Garages

Home report

15681 County Road 1104, Flint, Smith County, Texas, United States, 75762



Room dimensions

Floor 1 Total:1989sqft Excluded: 632sqft

#		Max Dimensions	sqft	Included
1	Dining Room	10'1" x 12'5"	125 sq. ft	Yes
2	Living Room	16'2" x 15'7"	264 sq. ft	Yes
3	Bedroom	15'10" x 12'1"	166 sq. ft	Yes
4	Primary Bath	10'9" x 9'5"	89 sq. ft	Yes
5	Kitchen	13'3" x 11'8"	142 sq. ft	Yes
6	Bedroom	13'5" x 10'8"	115 sq. ft	Yes
7	Breakfast Nook	11'0" x 8'11"	98 sq. ft	Yes
8	Bath	11'8" x 4'11"	58 sq. ft	Yes
9	W.I.C.	6'11" x 10'8"	65 sq. ft	Yes
10	Garage	21'0" x 19'5"	409 sq. ft	No
11	Covered Patio	18'7" x 13'11"	195 sq. ft	No

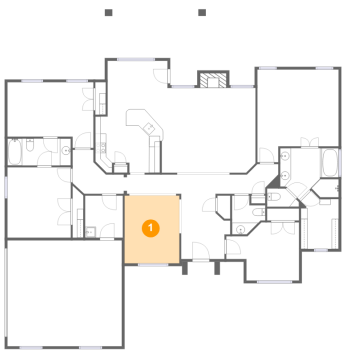
## Home report

**15681 County Road 1104, Flint, Smith County, Texas, United States, 75762**

#		Max Dimensions	sqft	Included
12	Bedroom	11'8" x 12'11"	151 sq. ft	Yes
13	WC	6'1" x 7'2"	33 sq. ft	Yes
14	Hall	27'8" x 5'6"	102 sq. ft	Yes
15	Foyer	9'0" x 11'11"	91 sq. ft	Yes
16	Laundry	6'11" x 7'9"	53 sq. ft	Yes
17	Hall	10'0" x 8'1"	53 sq. ft	Yes
18	Primary Bedroom	14'11" x 17'0"	222 sq. ft	Yes
19	Porch	4'11" x 2'4"	12 sq. ft	No
20	WC	5'10" x 3'4"	19 sq. ft	Yes

15681 County Road 1104, Flint, Smith County, Texas, United States, 75762

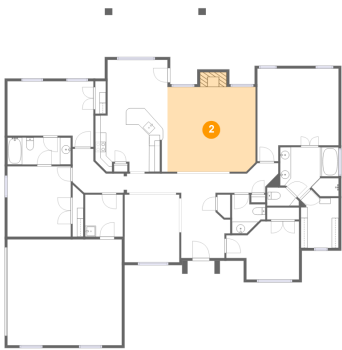
1 Floor 1 - Dining Room



Max Dimensions: 10'1" x 12'5"  
Calculated Area: 125 sq. ft  
Included: Yes

Heated: Yes  
Finished: Yes  
Enclosed: Yes  
Contiguous: Yes  
Permitted: Yes  
Wet space: No  
Addition: No  
Conversion: No

2 Floor 1 - Living Room

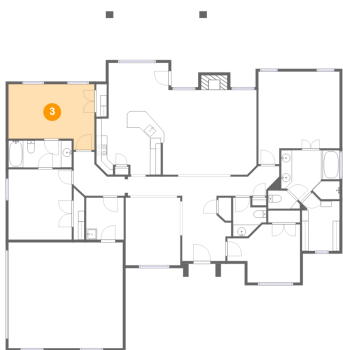


Max Dimensions: 16'2" x 15'7"  
Calculated Area: 264 sq. ft  
Included: Yes

Heated: Yes  
Finished: Yes  
Enclosed: Yes  
Contiguous: Yes  
Permitted: Yes  
Wet space: No  
Addition: No  
Conversion: No

15681 County Road 1104, Flint, Smith County, Texas, United States, 75762

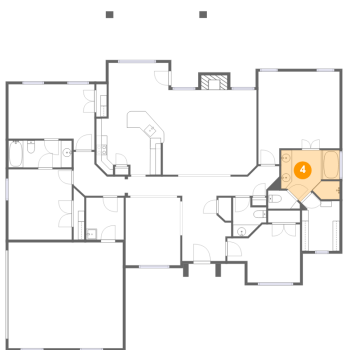
3 Floor 1 - Bedroom



Max Dimensions: 15'10" x 12'1"  
Calculated Area: 166 sq. ft  
Included: Yes

Heated: Yes  
Finished: Yes  
Enclosed: Yes  
Contiguous: Yes  
Permitted: Yes  
Wet space: No  
Addition: No  
Conversion: No

4 Floor 1 - Primary Bath



Max Dimensions: 10'9" x 9'5"  
Calculated Area: 89 sq. ft  
Included: Yes

Heated: Yes  
Finished: Yes  
Enclosed: Yes  
Contiguous: Yes  
Permitted: Yes  
Wet space: Yes  
Addition: No  
Conversion: No

5 Floor 1 - Kitchen

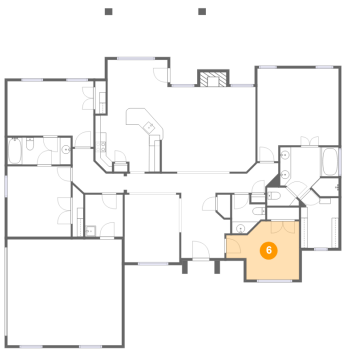


Max Dimensions: 13'3" x 11'8"  
Calculated Area: 142 sq. ft  
Included: Yes

Heated: Yes  
Finished: Yes  
Enclosed: Yes  
Contiguous: Yes  
Permitted: Yes  
Wet space: No  
Addition: No  
Conversion: No

15681 County Road 1104, Flint, Smith County, Texas, United States, 75762

6 Floor 1 - Bedroom



Max Dimensions: 13'5" x 10'8"  
Calculated Area: 115 sq. ft  
Included: Yes

Heated: Yes  
Finished: Yes  
Enclosed: Yes  
Contiguous: Yes  
Permitted: Yes  
Wet space: No  
Addition: No  
Conversion: No

7 Floor 1 - Breakfast Nook



Max Dimensions: 11'0" x 8'11"  
Calculated Area: 98 sq. ft  
Included: Yes

Heated: Yes  
Finished: Yes  
Enclosed: Yes  
Contiguous: Yes  
Permitted: Yes  
Wet space: No  
Addition: No  
Conversion: No

8 Floor 1 - Bath

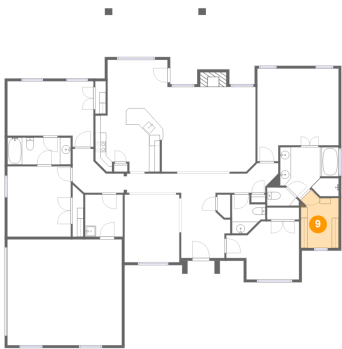


Max Dimensions: 11'8" x 4'11"  
Calculated Area: 58 sq. ft  
Included: Yes

Heated: Yes  
Finished: Yes  
Enclosed: Yes  
Contiguous: Yes  
Permitted: Yes  
Wet space: Yes  
Addition: No  
Conversion: No

15681 County Road 1104, Flint, Smith County, Texas, United States, 75762

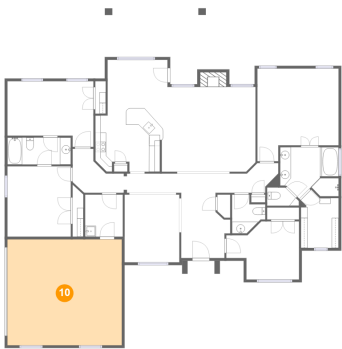
9 Floor 1 - W.I.C.



Max Dimensions: 6'11" x 10'8"  
Calculated Area: 65 sq. ft  
Included: Yes

Heated: Yes  
Finished: Yes  
Enclosed: Yes  
Contiguous: Yes  
Permitted: Yes  
Wet space: No  
Addition: No  
Conversion: No

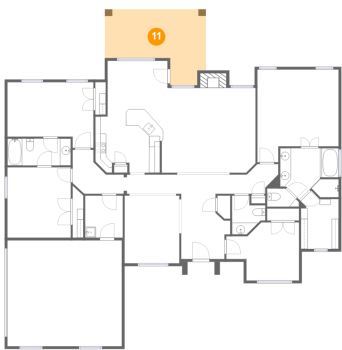
10 Floor 1 - Garage



Max Dimensions: 21'0" x 19'5"  
Calculated Area: 409 sq. ft  
Included: No

Heated: No  
Finished: No  
Enclosed: Yes  
Contiguous: Yes  
Permitted: Yes  
Wet space: No  
Addition: No  
Conversion: No

11 Floor 1 - Covered Patio



Max Dimensions: 18'7" x 13'11"  
Calculated Area: 195 sq. ft  
Included: No

Heated: No  
Finished: Yes  
Enclosed: No  
Contiguous: Yes  
Permitted: Yes  
Wet space: No  
Addition: No  
Conversion: No

## Home report

15681 County Road 1104, Flint, Smith County, Texas, United States, 75762

### 12 Floor 1 - Bedroom



Max Dimensions: 11'8" x 12'11"  
Calculated Area: 151 sq. ft  
Included: Yes

Heated: Yes  
Finished: Yes  
Enclosed: Yes  
Contiguous: Yes  
Permitted: Yes  
Wet space: No  
Addition: No  
Conversion: No

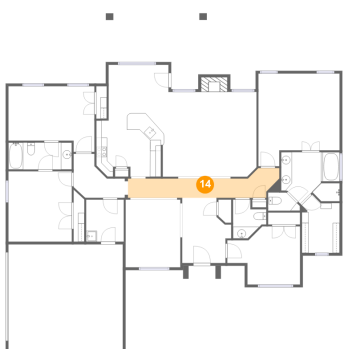
### 13 Floor 1 - WC



Max Dimensions: 6'1" x 7'2"  
Calculated Area: 33 sq. ft  
Included: Yes

Heated: Yes  
Finished: Yes  
Enclosed: Yes  
Contiguous: Yes  
Permitted: Yes  
Wet space: Yes  
Addition: No  
Conversion: No

### 14 Floor 1 - Hall

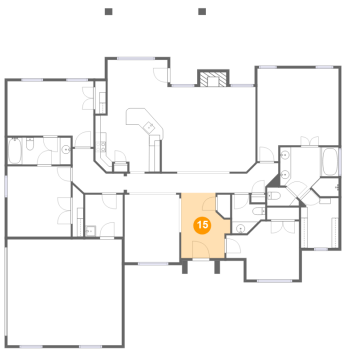


Max Dimensions: 27'8" x 5'6"  
Calculated Area: 102 sq. ft  
Included: Yes

Heated: Yes  
Finished: Yes  
Enclosed: Yes  
Contiguous: Yes  
Permitted: Yes  
Wet space: No  
Addition: No  
Conversion: No

15681 County Road 1104, Flint, Smith County, Texas, United States, 75762

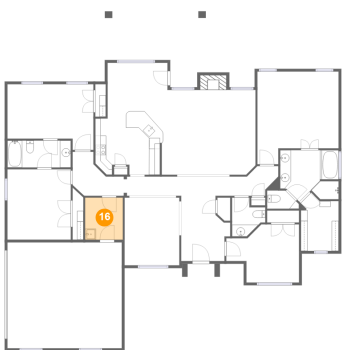
15 Floor 1 - Foyer



Max Dimensions: 9'0" x 11'11"  
Calculated Area: 91 sq. ft  
Included: Yes

Heated: Yes  
Finished: Yes  
Enclosed: Yes  
Contiguous: Yes  
Permitted: Yes  
Wet space: No  
Addition: No  
Conversion: No

16 Floor 1 - Laundry



Max Dimensions: 6'11" x 7'9"  
Calculated Area: 53 sq. ft  
Included: Yes

Heated: Yes  
Finished: Yes  
Enclosed: Yes  
Contiguous: Yes  
Permitted: Yes  
Wet space: No  
Addition: No  
Conversion: No

17 Floor 1 - Hall

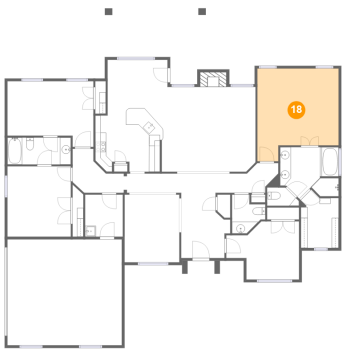


Max Dimensions: 10'0" x 8'1"  
Calculated Area: 53 sq. ft  
Included: Yes

Heated: Yes  
Finished: Yes  
Enclosed: Yes  
Contiguous: Yes  
Permitted: Yes  
Wet space: No  
Addition: No  
Conversion: No

15681 County Road 1104, Flint, Smith County, Texas, United States, 75762

18 Floor 1 - Primary Bedroom



Max Dimensions: 14'11" x 17'0"  
Calculated Area: 222 sq. ft  
Included: Yes

Heated: Yes  
Finished: Yes  
Enclosed: Yes  
Contiguous: Yes  
Permitted: Yes  
Wet space: No  
Addition: No  
Conversion: No

19 Floor 1 - Porch



Max Dimensions: 4'11" x 2'4"  
Calculated Area: 12 sq. ft  
Included: No

Heated: No  
Finished: Yes  
Enclosed: No  
Contiguous: Yes  
Permitted: Yes  
Wet space: No  
Addition: No  
Conversion: No

20 Floor 1 - WC



Max Dimensions: 5'10" x 3'4"  
Calculated Area: 19 sq. ft  
Included: Yes

Heated: Yes  
Finished: Yes  
Enclosed: Yes  
Contiguous: Yes  
Permitted: Yes  
Wet space: Yes  
Addition: No  
Conversion: No