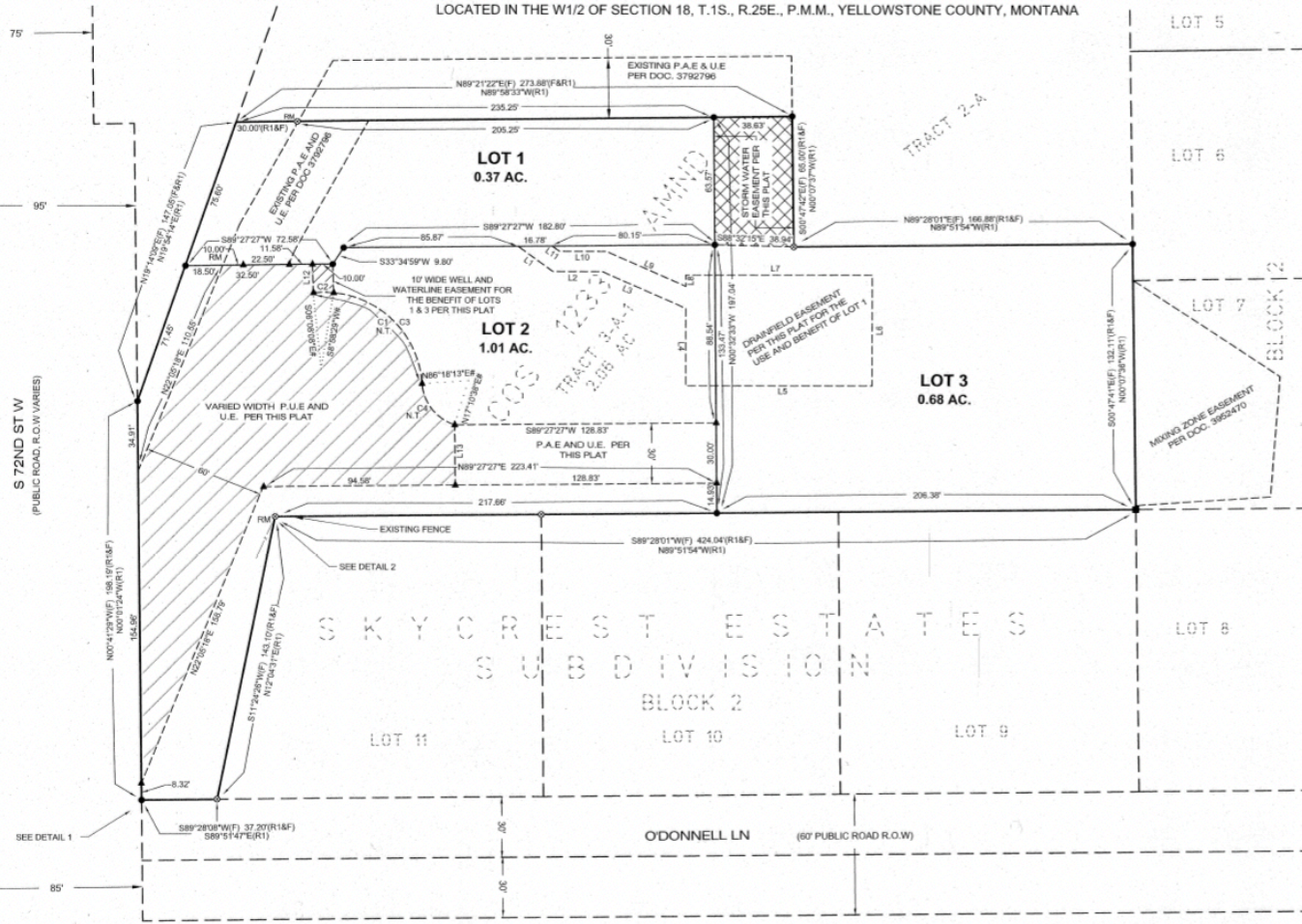


# PLAT OF TURKEY TOWN SUBDIVISION

BEING TRACT 3-A-1 OF AMENDED TRACT 3-A OF CERTIFICATE OF SURVEY 1223  
LOCATED IN THE W1/2 OF SECTION 18, T.1S., R.25E., P.M.M., YELLOWSTONE COUNTY, MONTANA

CO'S 2057  
TRACT 9

CO'S 2057  
TRACT 10



**SCALE IN FEET**  
0 30 60

**BASIS OF BEARING:**  
STATE PLANE MONTANA, ZONE 2500  
GROUND (TRUS) DISTANCES

**DATE:**  
JANUARY 2021, MAY 2022

**RECORD OWNERS:**  
RENT & CO. (L.C. DOC. 389571)

**SURVEY COMMISSIONED BY:**  
ALLEN RICE

**TOTAL SUBDIVISION AREA:**  
2.06 ACRES (GROSS)

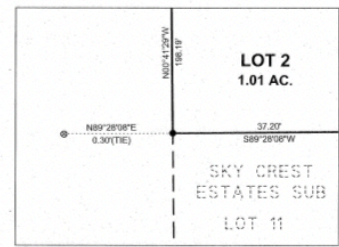
**EASEMENT LINE DATA**

LINE	BEARING	DISTANCE
L1	S53°57'02"E	21.19'
L2	N80°00'00"E	24.28'
L3	S66°11'08"E	45.06'

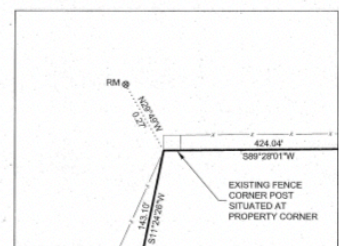
**LEGEND**

- = SET 5/8"x24" REBAR WITH 1-1/4" YPC (JACOBSON, 13748LS)
- ▲ = SET 5/8"x24" REBAR WITH 1-1/4" RPC (JACOBSON, 13748LS)

SP 4043134



**DETAIL 1**  
NOT TO SCALE



**DETAIL 2**  
NOT TO SCALE