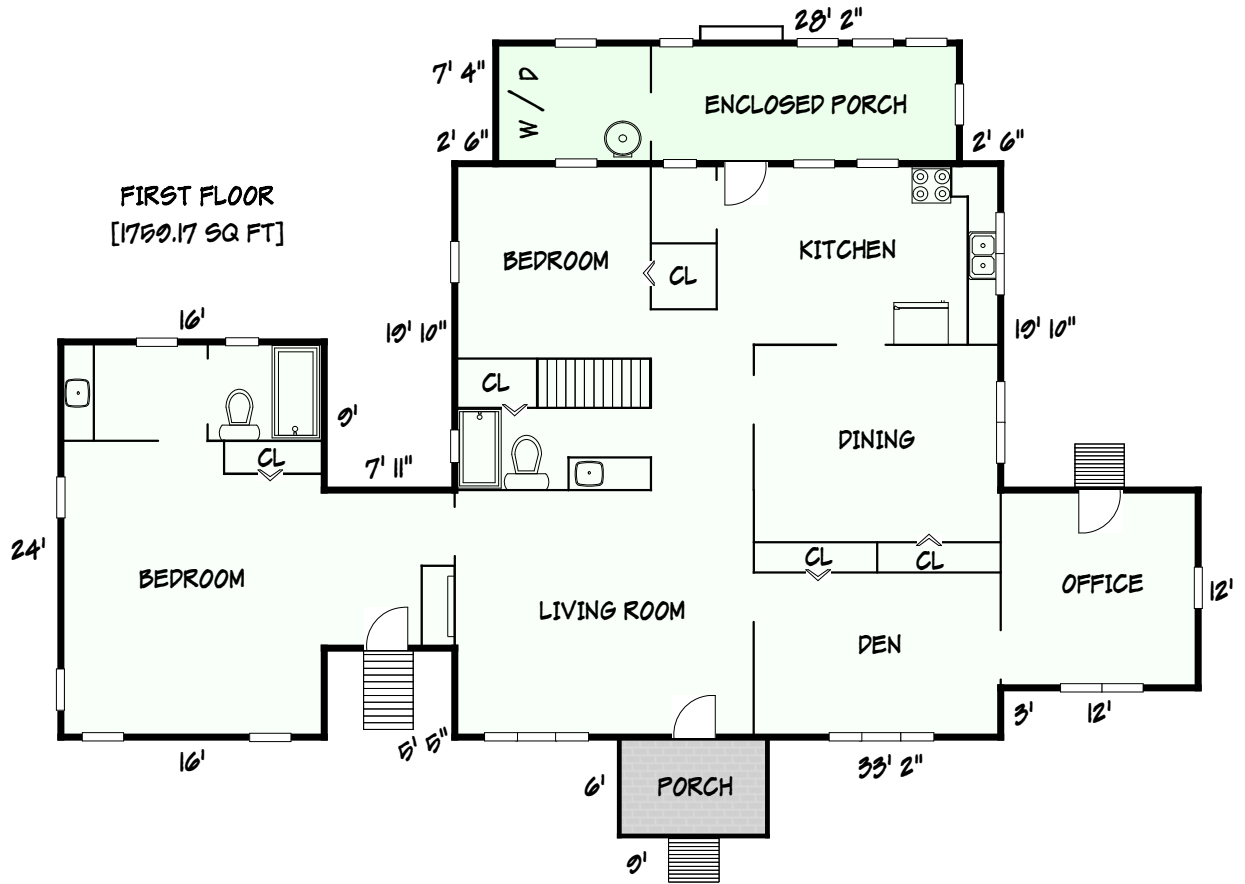
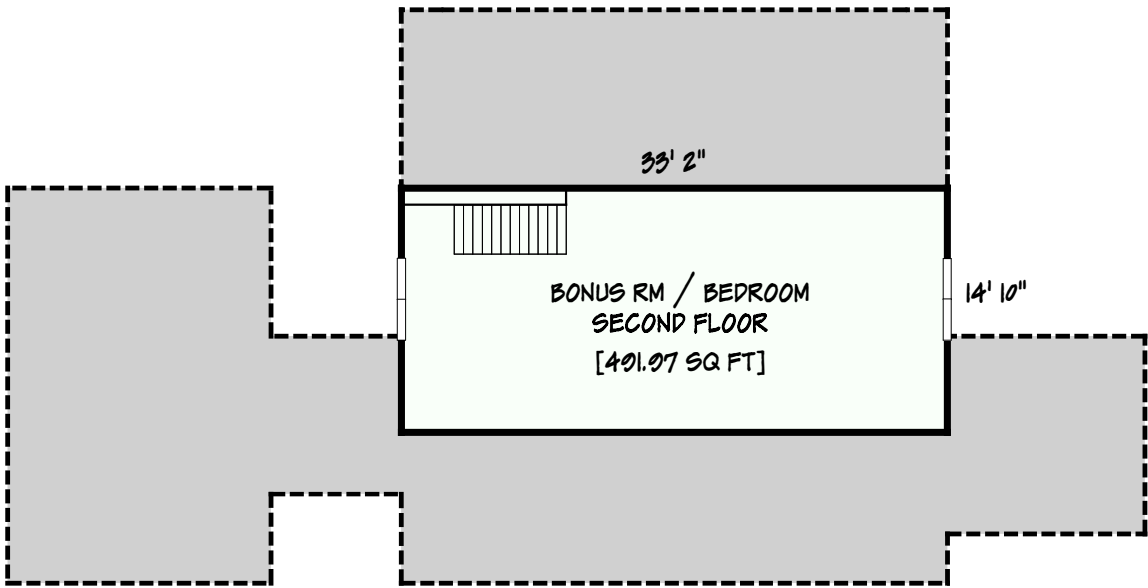


FIRST FLOOR
[1750.17 SQ FT]





Area Calculations Summary

Living Area		Calculation Details
First Floor	1759.17 Sq ft	$33.17 \times 19.83 = 657.81$ $12 \times 12 = 144$ $24 \times 16 = 383.99$ $15 \times 33.17 = 497.5$ $9.58 \times 7.92 = 75.87$ $0 \times 15 = 0.01$ $0.5 \times 0 \times 9 = 0$
Second Floor	491.97 Sq ft	$33.17 \times 14.83 = 491.97$
Total Living Area (Rounded):		2251 Sq ft
Non-living Area		
Enclosed Porch	206.56 Sq ft	$28.17 \times 7.33 = 206.55$
Porch	54 Sq ft	$9 \times 6 = 54$