

Home report

50916 Stone Hill Court, Granger, St. Joseph County, Indiana,
United States, 46530



Total Area: 3420 sq. ft

Below Ground: 1572 sq. ft, Floor 2: 2154 sq. ft, Floor 3: 1266 sq. ft

Excluded: Porch 116 sq. ft, Deck 305 sq. ft, Embedded window 9 sq. ft, Fireplace 9 sq. ft, Open to below 58 sq. ft, Walls: 298 sq. ft

Property summary

 **3** Floors

 **4** Bedrooms

 **2** Bathrooms

Home report

**50916 Stone Hill Court, Granger, St. Joseph County, Indiana,
United States, 46530**



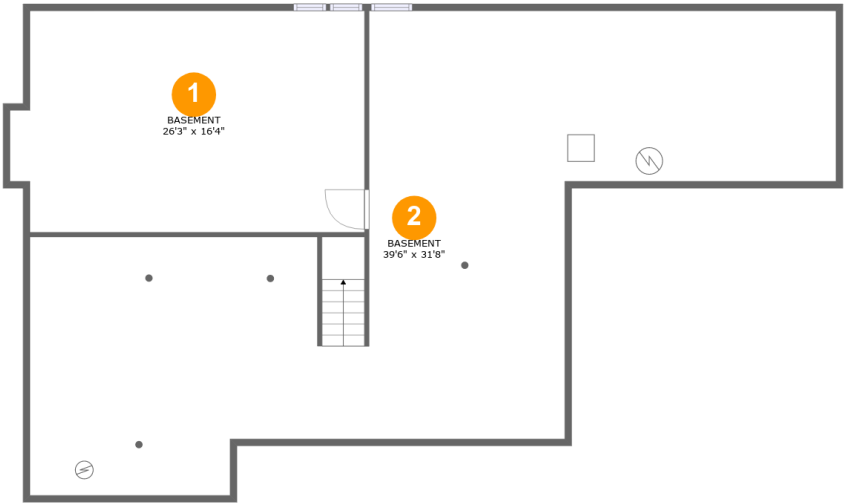
1
Half baths



1
Garages

Home report

50916 Stone Hill Court, Granger, St. Joseph County, Indiana,
United States, 46530



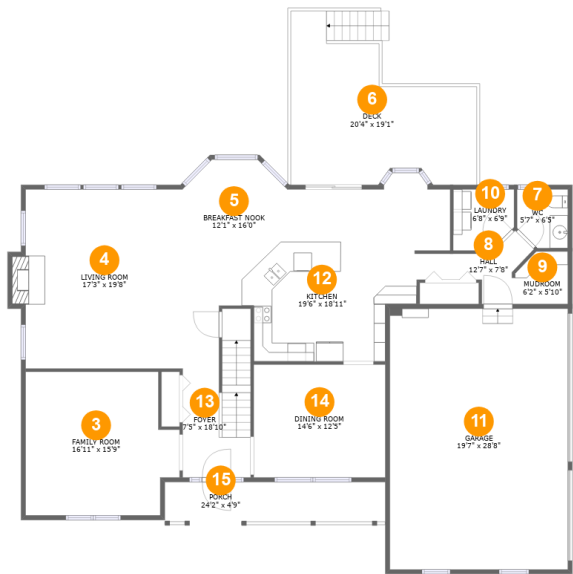
Room dimensions

Floor 1 Below ground Total:1572sqft Excluded: 0sqft

#		Max Dimensions	sqft	Included
1	Basement	26'3" x 16'4"	412 sq. ft	Yes
2	Basement	39'6" x 31'8"	1140 sq. ft	Yes

Home report

50916 Stone Hill Court, Granger, St. Joseph County, Indiana,
United States, 46530



Room dimensions

Floor 2 Total:2154sqft Excluded: 439sqft

#		Max Dimensions	sqft	Included
3	Family Room	16'11" x 15'9"	243 sq. ft	Yes
4	Living Room	17'3" x 19'8"	347 sq. ft	Yes
5	Breakfast Nook	12'1" x 16'0"	156 sq. ft	Yes
6	Deck	20'4" x 19'1"	313 sq. ft	No
7	WC	5'7" x 6'5"	34 sq. ft	Yes
8	Hall	12'7" x 7'8"	48 sq. ft	Yes
9	Mudroom	6'2" x 5'10"	32 sq. ft	Yes
10	Laundry	6'8" x 6'9"	42 sq. ft	Yes
11	Garage	19'7" x 28'8"	560 sq. ft	Yes
12	Kitchen	19'6" x 18'11"	312 sq. ft	Yes
13	Foyer	7'5" x 18'10"	137 sq. ft	Yes

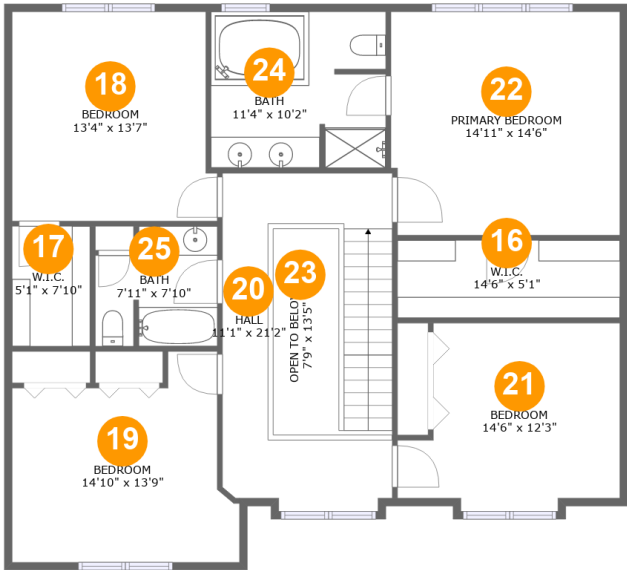
Home report

50916 Stone Hill Court, Granger, St. Joseph County, Indiana,
United States, 46530

#		Max Dimensions	sqft	Included
14	Dining Room	14'6" x 12'5"	179 sq. ft	Yes
15	Porch	24'2" x 4'9"	116 sq. ft	No

Home report

50916 Stone Hill Court, Granger, St. Joseph County, Indiana,
United States, 46530



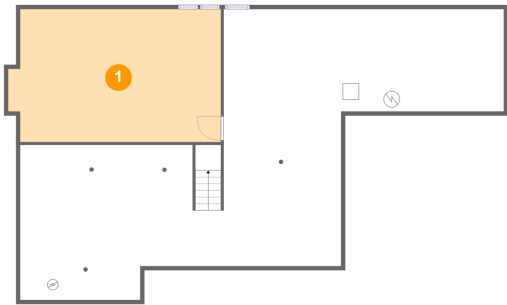
Room dimensions

Floor 3 Total:1266sqft Excluded: 58sqft

#		Max Dimensions	sqft	Included
16	W.I.C.	14'6" x 5'1"	73 sq. ft	Yes
17	W.I.C.	5'1" x 7'10"	40 sq. ft	Yes
18	Bedroom	13'4" x 13'7"	174 sq. ft	Yes
19	Bedroom	14'10" x 13'9"	165 sq. ft	Yes
20	Hall	11'1" x 21'2"	180 sq. ft	Yes
21	Bedroom	14'6" x 12'3"	152 sq. ft	Yes
22	Primary Bedroom	14'11" x 14'6"	215 sq. ft	Yes
23	Open To Below	7'9" x 13'5"	58 sq. ft	No
24	Bath	11'4" x 10'2"	114 sq. ft	Yes
25	Bath	7'11" x 7'10"	56 sq. ft	Yes

50916 Stone Hill Court, Granger, St. Joseph County, Indiana,
United States, 46530

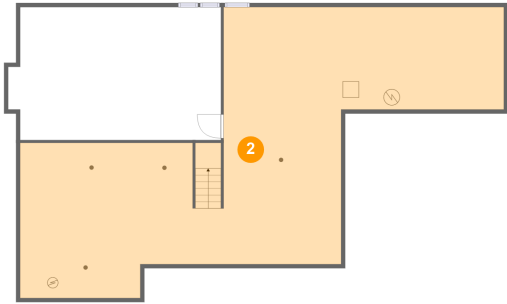
1 Floor 1 - Basement



Max Dimensions: 26'3" x 16'4"
Calculated Area: 412 sq. ft
Included: Yes

Heated: Yes
Finished: Yes
Enclosed: Yes
Contiguous: Yes
Permitted: Yes
Wet space: No
Addition: No
Conversion: No

2 Floor 1 - Basement

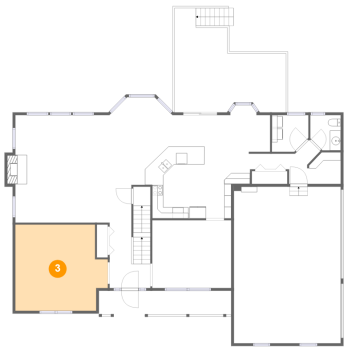


Max Dimensions: 39'6" x 31'8"
Calculated Area: 1140 sq. ft
Included: Yes

Heated: Yes
Finished: Yes
Enclosed: Yes
Contiguous: Yes
Permitted: Yes
Wet space: No
Addition: No
Conversion: No

50916 Stone Hill Court, Granger, St. Joseph County, Indiana,
United States, 46530

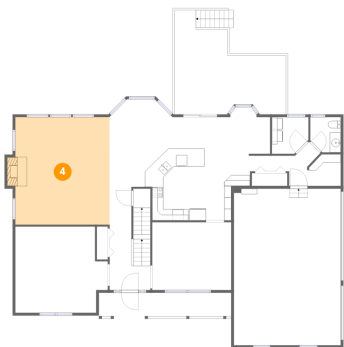
3 Floor 2 - Family Room



Max Dimensions: 16'11" x 15'9"
Calculated Area: 243 sq. ft
Included: Yes

Heated: Yes
Finished: Yes
Enclosed: Yes
Contiguous: Yes
Permitted: Yes
Wet space: No
Addition: No
Conversion: No

4 Floor 2 - Living Room



Max Dimensions: 17'3" x 19'8"
Calculated Area: 347 sq. ft
Included: Yes

Heated: Yes
Finished: Yes
Enclosed: Yes
Contiguous: Yes
Permitted: Yes
Wet space: No
Addition: No
Conversion: No

5 Floor 2 - Breakfast Nook



Max Dimensions: 12'1" x 16'0"
Calculated Area: 156 sq. ft
Included: Yes

Heated: Yes
Finished: Yes
Enclosed: Yes
Contiguous: Yes
Permitted: Yes
Wet space: No
Addition: No
Conversion: No

50916 Stone Hill Court, Granger, St. Joseph County, Indiana,
United States, 46530

6 Floor 2 - Deck



Max Dimensions: 20'4" x 19'1"
Calculated Area: 313 sq. ft
Included: No

Heated: No
Finished: Yes
Enclosed: No
Contiguous: Yes
Permitted: Yes
Wet space: No
Addition: No
Conversion: No

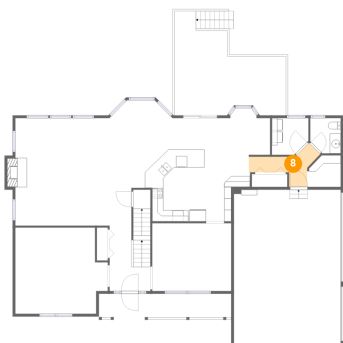
7 Floor 2 - WC



Max Dimensions: 5'7" x 6'5"
Calculated Area: 34 sq. ft
Included: Yes

Heated: Yes
Finished: Yes
Enclosed: Yes
Contiguous: Yes
Permitted: Yes
Wet space: Yes
Addition: No
Conversion: No

8 Floor 2 - Hall



Max Dimensions: 12'7" x 7'8"
Calculated Area: 48 sq. ft
Included: Yes

Heated: Yes
Finished: Yes
Enclosed: Yes
Contiguous: Yes
Permitted: Yes
Wet space: No
Addition: No
Conversion: No

50916 Stone Hill Court, Granger, St. Joseph County, Indiana,
United States, 46530

9 Floor 2 - Mudroom



Max Dimensions: 6'2" x 5'10"
Calculated Area: 32 sq. ft
Included: Yes

Heated: Yes
Finished: Yes
Enclosed: Yes
Contiguous: Yes
Permitted: Yes
Wet space: No
Addition: No
Conversion: No

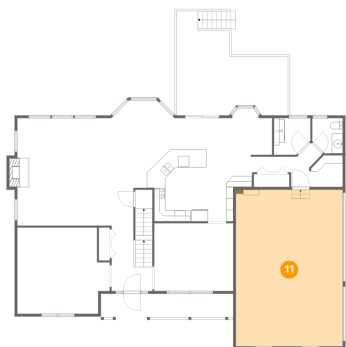
10 Floor 2 - Laundry



Max Dimensions: 6'8" x 6'9"
Calculated Area: 42 sq. ft
Included: Yes

Heated: Yes
Finished: Yes
Enclosed: Yes
Contiguous: Yes
Permitted: Yes
Wet space: No
Addition: No
Conversion: No

11 Floor 2 - Garage



Max Dimensions: 19'7" x 28'8"
Calculated Area: 560 sq. ft
Included: No

Heated: No
Finished: Yes
Enclosed: Yes
Contiguous: Yes
Permitted: Yes
Wet space: No
Addition: No
Conversion: No

50916 Stone Hill Court, Granger, St. Joseph County, Indiana,
United States, 46530

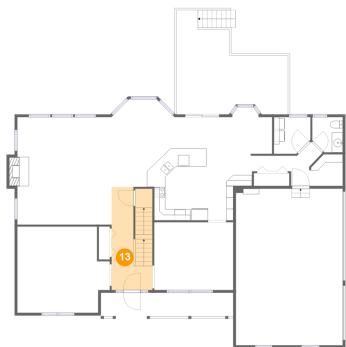
12 Floor 2 - Kitchen



Max Dimensions: 19'6" x 18'11"
Calculated Area: 312 sq. ft
Included: Yes

Heated: Yes
Finished: Yes
Enclosed: Yes
Contiguous: Yes
Permitted: Yes
Wet space: No
Addition: No
Conversion: No

13 Floor 2 - Foyer



Max Dimensions: 7'5" x 18'10"
Calculated Area: 137 sq. ft
Included: Yes

Heated: Yes
Finished: Yes
Enclosed: Yes
Contiguous: Yes
Permitted: Yes
Wet space: No
Addition: No
Conversion: No

14 Floor 2 - Dining Room



Max Dimensions: 14'6" x 12'5"
Calculated Area: 179 sq. ft
Included: Yes

Heated: Yes
Finished: Yes
Enclosed: Yes
Contiguous: Yes
Permitted: Yes
Wet space: No
Addition: No
Conversion: No

Home report

50916 Stone Hill Court, Granger, St. Joseph County, Indiana,
United States, 46530

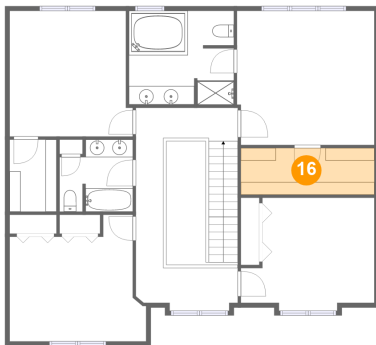
15 Floor 2 - Porch



Max Dimensions: 24'2" x 4'9"
Calculated Area: 116 sq. ft
Included: No

Heated: No
Finished: Yes
Enclosed: No
Contiguous: Yes
Permitted: Yes
Wet space: No
Addition: No
Conversion: No

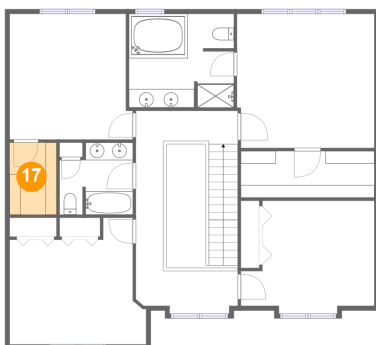
16 Floor 3 - W.I.C.



Max Dimensions: 14'6" x 5'1"
Calculated Area: 73 sq. ft
Included: Yes

Heated: Yes
Finished: Yes
Enclosed: Yes
Contiguous: Yes
Permitted: Yes
Wet space: No
Addition: No
Conversion: No

17 Floor 3 - W.I.C.

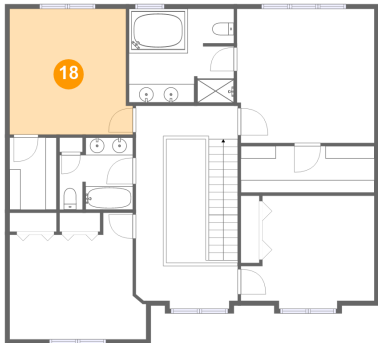


Max Dimensions: 5'1" x 7'10"
Calculated Area: 40 sq. ft
Included: Yes

Heated: Yes
Finished: Yes
Enclosed: Yes
Contiguous: Yes
Permitted: Yes
Wet space: No
Addition: No
Conversion: No

50916 Stone Hill Court, Granger, St. Joseph County, Indiana,
United States, 46530

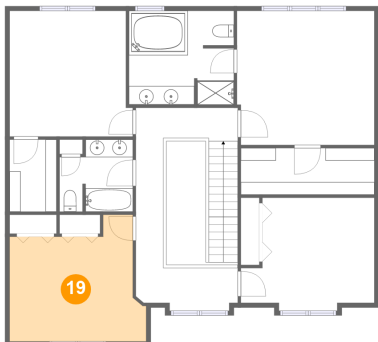
18 Floor 3 - Bedroom



Max Dimensions: 13'4" x 13'7"
Calculated Area: 174 sq. ft
Included: Yes

Heated: Yes
Finished: Yes
Enclosed: Yes
Contiguous: Yes
Permitted: Yes
Wet space: No
Addition: No
Conversion: No

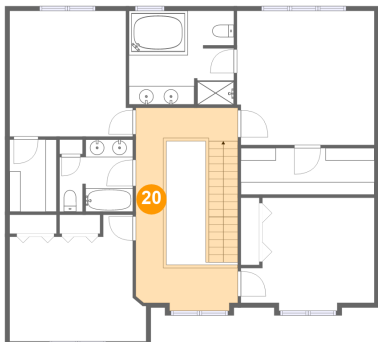
19 Floor 3 - Bedroom



Max Dimensions: 14'10" x 13'9"
Calculated Area: 165 sq. ft
Included: Yes

Heated: Yes
Finished: Yes
Enclosed: Yes
Contiguous: Yes
Permitted: Yes
Wet space: No
Addition: No
Conversion: No

20 Floor 3 - Hall



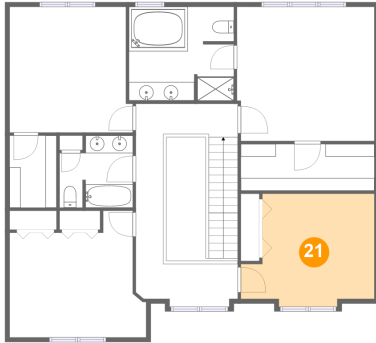
Max Dimensions: 11'1" x 21'2"
Calculated Area: 180 sq. ft
Included: Yes

Heated: Yes
Finished: Yes
Enclosed: Yes
Contiguous: Yes
Permitted: Yes
Wet space: No
Addition: No
Conversion: No

Home report

50916 Stone Hill Court, Granger, St. Joseph County, Indiana,
United States, 46530

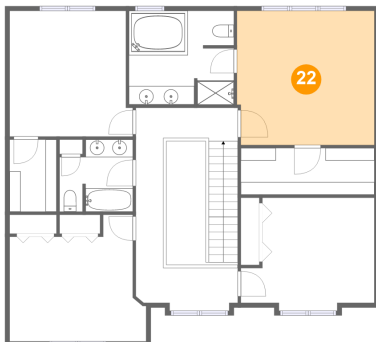
21 Floor 3 - Bedroom



Max Dimensions: 14'6" x 12'3"
Calculated Area: 152 sq. ft
Included: Yes

Heated: Yes
Finished: Yes
Enclosed: Yes
Contiguous: Yes
Permitted: Yes
Wet space: No
Addition: No
Conversion: No

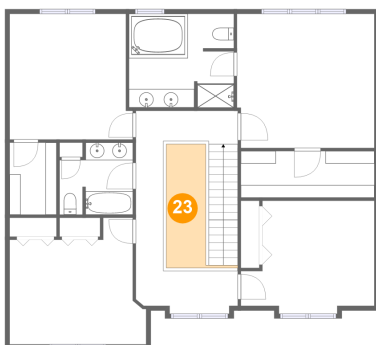
22 Floor 3 - Primary Bedroom



Max Dimensions: 14'11" x 14'6"
Calculated Area: 215 sq. ft
Included: Yes

Heated: Yes
Finished: Yes
Enclosed: Yes
Contiguous: Yes
Permitted: Yes
Wet space: No
Addition: No
Conversion: No

23 Floor 3 - Open To Below

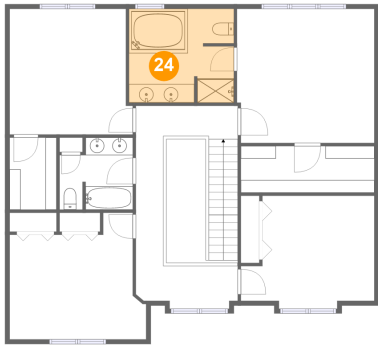


Max Dimensions: 7'9" x 13'5"
Calculated Area: 58 sq. ft
Included: No

Heated: No
Finished: No
Enclosed: No
Contiguous: Yes
Permitted: No
Wet space: No
Addition: No
Conversion: No

50916 Stone Hill Court, Granger, St. Joseph County, Indiana,
United States, 46530

24 Floor 3 - Bath



Max Dimensions: 11'4" x 10'2"
Calculated Area: 114 sq. ft
Included: Yes

Heated: Yes
Finished: Yes
Enclosed: Yes
Contiguous: Yes
Permitted: Yes
Wet space: Yes
Addition: No
Conversion: No

25 Floor 3 - Bath



Max Dimensions: 7'11" x 7'10"
Calculated Area: 56 sq. ft
Included: Yes

Heated: Yes
Finished: Yes
Enclosed: Yes
Contiguous: Yes
Permitted: Yes
Wet space: Yes
Addition: No
Conversion: No