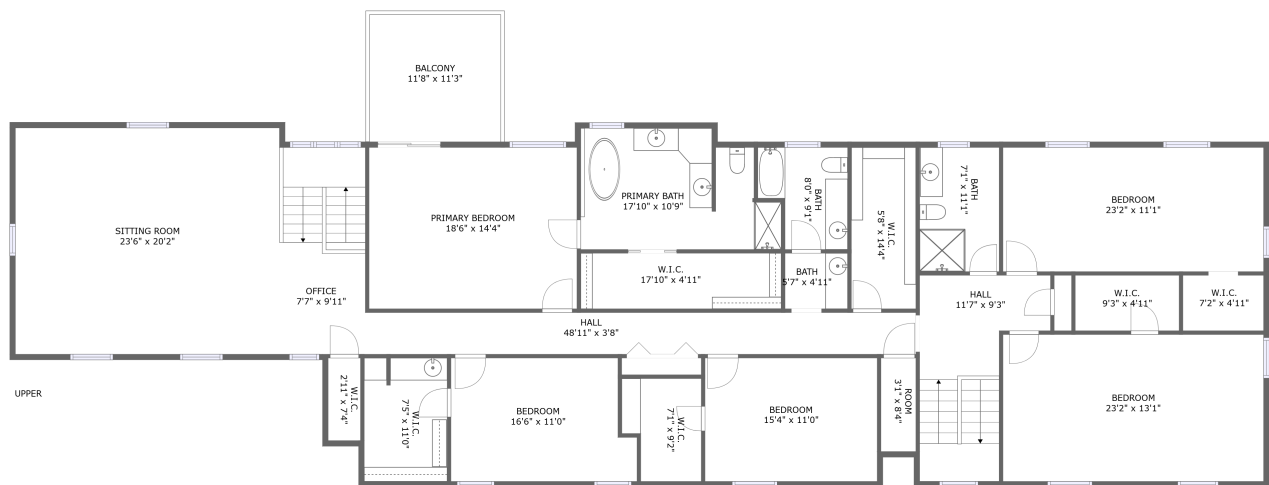





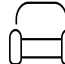



**5573 Valley Drive, Cave Spring, Roanoke,
Roanoke County, Virginia, United States, 24018,**

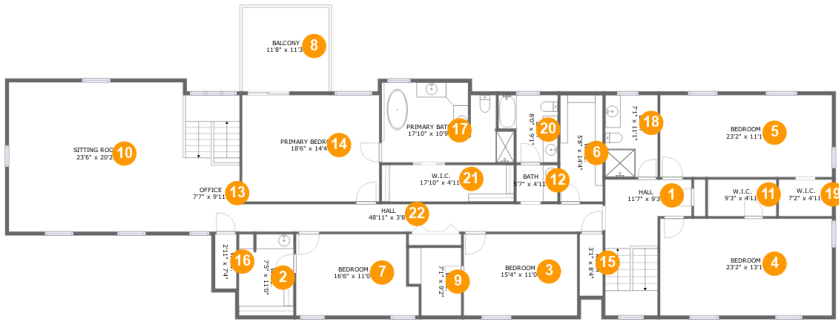


Property Summary

 **0** garages  **5** bedrooms  **3** bathrooms  **0** half baths

 **1** floors  **3,015** Gross Living Area sqft  **3,305** total sqft

5573 Valley Drive, Cave Spring, Roanoke,
Roanoke County, Virginia, United States, 24018,



Room Dimensions

Floor 1 Total sqft: 3305 Living area: 3015

#	Room name	Dimensions	Area (sqft)	Counted as Living Area
1	Hall	11'7" x 9'3"	152 sq. ft	Yes
2	W.i.c.	7'5" x 11'0"	80 sq. ft	Yes
3	Bedroom	15'4" x 11'0"	168 sq. ft	Yes
4	Bedroom	23'2" x 13'1"	303 sq. ft	Yes
5	Bedroom	23'2" x 11'1"	256 sq. ft	Yes
6	W.i.c.	5'8" x 14'4"	82 sq. ft	Yes
7	Bedroom	16'6" x 11'0"	170 sq. ft	Yes
8	Balcony	11'8" x 11'3"	132 sq. ft	No
9	W.i.c.	7'1" x 9'2"	58 sq. ft	Yes
10	Sitting Room	23'6" x 20'2"	354 sq. ft	Yes
11	W.i.c.	9'3" x 4'11"	46 sq. ft	Yes

**5573 Valley Drive, Cave Spring, Roanoke,
Roanoke County, Virginia, United States, 24018,**

#	Room name	Dimensions	Area (sqft)	Counted as Living Area
12	Bath	5'7" x 4'11"	28 sq. ft	Yes
13	Office	7'7" x 9'11"	141 sq. ft	Yes
14	Primary Bedroom	18'6" x 14'4"	266 sq. ft	Yes
15	Room	3'1" x 8'4"	14 sq. ft	Yes
16	W.i.c.	2'11" x 7'4"	13 sq. ft	Yes
17	Primary Bath	17'10" x 10'9"	168 sq. ft	Yes
18	Bath	7'1" x 11'1"	78 sq. ft	Yes
19	W.i.c.	7'2" x 4'11"	35 sq. ft	Yes
20	Bath	8'0" x 9'1"	62 sq. ft	Yes
21	W.i.c.	17'10" x 4'11"	88 sq. ft	Yes
22	Hall	48'11" x 3'8"	182 sq. ft	Yes

5573 Valley Drive, Cave Spring, Roanoke,
Roanoke County, Virginia, United States, 24018,

1 Floor 1 - Hall



Dimensions: 11'7" x 9'3"
Area: 152 sq. ft
Counted as Living Area:
Yes

Heated: Yes
Finished: Yes
Enclosed: Yes
Contiguous:
Yes
Permitted: Yes
Wet Space: No
Addition: No
Conversion: No

2 Floor 1 - W.i.c.



Dimensions: 7'5" x 11'0"
Area: 80 sq. ft
Counted as Living Area:
Yes

Heated: Yes
Finished: Yes
Enclosed: Yes
Contiguous:
Yes
Permitted: Yes
Wet Space: No
Addition: No
Conversion: No

**5573 Valley Drive, Cave Spring, Roanoke,
Roanoke County, Virginia, United States, 24018,**

3 Floor 1 - Bedroom



Dimensions: 15'4" x 11'0"
Area: 168 sq. ft
Counted as Living Area:
Yes

Heated: Yes
Finished: Yes
Enclosed: Yes
Contiguous:
Yes
Permitted: Yes
Wet Space: No
Addition: No
Conversion: No

4 Floor 1 - Bedroom



Dimensions: 23'2" x 13'1"
Area: 303 sq. ft
Counted as Living Area:
Yes

Heated: Yes
Finished: Yes
Enclosed: Yes
Contiguous:
Yes
Permitted: Yes
Wet Space: No
Addition: No
Conversion: No

5 Floor 1 - Bedroom



Dimensions: 23'2" x 11'1"
Area: 256 sq. ft
Counted as Living Area:
Yes

Heated: Yes
Finished: Yes
Enclosed: Yes
Contiguous:
Yes
Permitted: Yes
Wet Space: No
Addition: No
Conversion: No

**5573 Valley Drive, Cave Spring, Roanoke,
Roanoke County, Virginia, United States, 24018,**

6 Floor 1 - W.i.c.



Dimensions: 5'8" x 14'4"
Area: 82 sq. ft
Counted as Living Area:
Yes

Heated: Yes
Finished: Yes
Enclosed: Yes
Contiguous:
Yes
Permitted: Yes
Wet Space: No
Addition: No
Conversion: No

7 Floor 1 - Bedroom



Dimensions: 16'6" x 11'0"
Area: 170 sq. ft
Counted as Living Area:
Yes

Heated: Yes
Finished: Yes
Enclosed: Yes
Contiguous:
Yes
Permitted: Yes
Wet Space: No
Addition: No
Conversion: No

8 Floor 1 - Balcony



Dimensions: 11'8" x 11'3"
Area: 132 sq. ft
Counted as Living Area: No

Heated: No
Finished: Yes
Enclosed: No
Contiguous: Yes
Permitted: Yes
Wet Space: No
Addition: No
Conversion: No

**5573 Valley Drive, Cave Spring, Roanoke,
Roanoke County, Virginia, United States, 24018,**

9 Floor 1 - W.i.c.



Dimensions: 7'1" x 9'2"
Area: 58 sq. ft
Counted as Living Area:
Yes

Heated: Yes
Finished: Yes
Enclosed: Yes
Contiguous:
Yes
Permitted: Yes
Wet Space: No
Addition: No
Conversion: No

10 Floor 1 - Sitting Room



Dimensions: 23'6" x 20'2"
Area: 354 sq. ft
Counted as Living Area:
Yes

Heated: Yes
Finished: Yes
Enclosed: Yes
Contiguous:
Yes
Permitted: Yes
Wet Space: No
Addition: No
Conversion: No

11 Floor 1 - W.i.c.



Dimensions: 9'3" x 4'11"
Area: 46 sq. ft
Counted as Living Area:
Yes

Heated: Yes
Finished: Yes
Enclosed: Yes
Contiguous:
Yes
Permitted: Yes
Wet Space: No
Addition: No
Conversion: No

**5573 Valley Drive, Cave Spring, Roanoke,
Roanoke County, Virginia, United States, 24018,**

12 Floor 1 - Bath



Dimensions: 5'7" x 4'11"
Area: 28 sq. ft
Counted as Living Area:
Yes

Heated: Yes
Finished: Yes
Enclosed: Yes
Contiguous:
Yes
Permitted: Yes
Wet Space: Yes
Addition: No
Conversion: No

13 Floor 1 - Office



Dimensions: 7'7" x 9'11"
Area: 141 sq. ft
Counted as Living Area:
Yes

Heated: Yes
Finished: Yes
Enclosed: Yes
Contiguous:
Yes
Permitted: Yes
Wet Space: No
Addition: No
Conversion: No

14 Floor 1 - Primary Bedroom



Dimensions: 18'6" x 14'4"
Area: 266 sq. ft
Counted as Living Area:
Yes

Heated: Yes
Finished: Yes
Enclosed: Yes
Contiguous:
Yes
Permitted: Yes
Wet Space: No
Addition: No
Conversion: No

**5573 Valley Drive, Cave Spring, Roanoke,
Roanoke County, Virginia, United States, 24018,**

15 Floor 1 - Room



Dimensions: 3'1" x 8'4"
Area: 14 sq. ft
Counted as Living Area:
Yes

Heated: Yes
Finished: Yes
Enclosed: Yes
Contiguous:
Yes
Permitted: Yes
Wet Space: No
Addition: No
Conversion: No

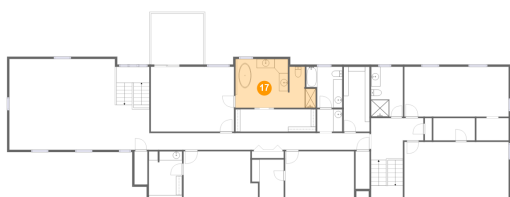
16 Floor 1 - W.i.c.



Dimensions: 2'11" x 7'4"
Area: 13 sq. ft
Counted as Living Area:
Yes

Heated: Yes
Finished: Yes
Enclosed: Yes
Contiguous:
Yes
Permitted: Yes
Wet Space: No
Addition: No
Conversion: No

17 Floor 1 - Primary Bath



Dimensions: 17'10" x 10'9"
Area: 168 sq. ft
Counted as Living Area:
Yes

Heated: Yes
Finished: Yes
Enclosed: Yes
Contiguous:
Yes
Permitted: Yes
Wet Space: Yes
Addition: No
Conversion: No

**5573 Valley Drive, Cave Spring, Roanoke,
Roanoke County, Virginia, United States, 24018,**

18 Floor 1 - Bath



Dimensions: 7'1" x 11'1"
Area: 78 sq. ft
Counted as Living Area:
Yes

Heated: Yes
Finished: Yes
Enclosed: Yes
Contiguous:
Yes
Permitted: Yes
Wet Space: Yes
Addition: No
Conversion: No

19 Floor 1 - W.i.c.



Dimensions: 7'2" x 4'11"
Area: 35 sq. ft
Counted as Living Area:
Yes

Heated: Yes
Finished: Yes
Enclosed: Yes
Contiguous:
Yes
Permitted: Yes
Wet Space: No
Addition: No
Conversion: No

20 Floor 1 - Bath



Dimensions: 8'0" x 9'1"
Area: 62 sq. ft
Counted as Living Area:
Yes

Heated: Yes
Finished: Yes
Enclosed: Yes
Contiguous:
Yes
Permitted: Yes
Wet Space: Yes
Addition: No
Conversion: No

**5573 Valley Drive, Cave Spring, Roanoke,
Roanoke County, Virginia, United States, 24018,**

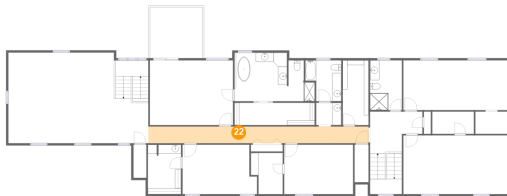
21 Floor 1 - W.i.c.



Dimensions: 17'10" x 4'11"
Area: 88 sq. ft
Counted as Living Area:
Yes

Heated: Yes
Finished: Yes
Enclosed: Yes
Contiguous:
Yes
Permitted: Yes
Wet Space: No
Addition: No
Conversion: No

22 Floor 1 - Hall



Dimensions: 48'11" x 3'8"
Area: 182 sq. ft
Counted as Living Area:
Yes

Heated: Yes
Finished: Yes
Enclosed: Yes
Contiguous:
Yes
Permitted: Yes
Wet Space: No
Addition: No
Conversion: No