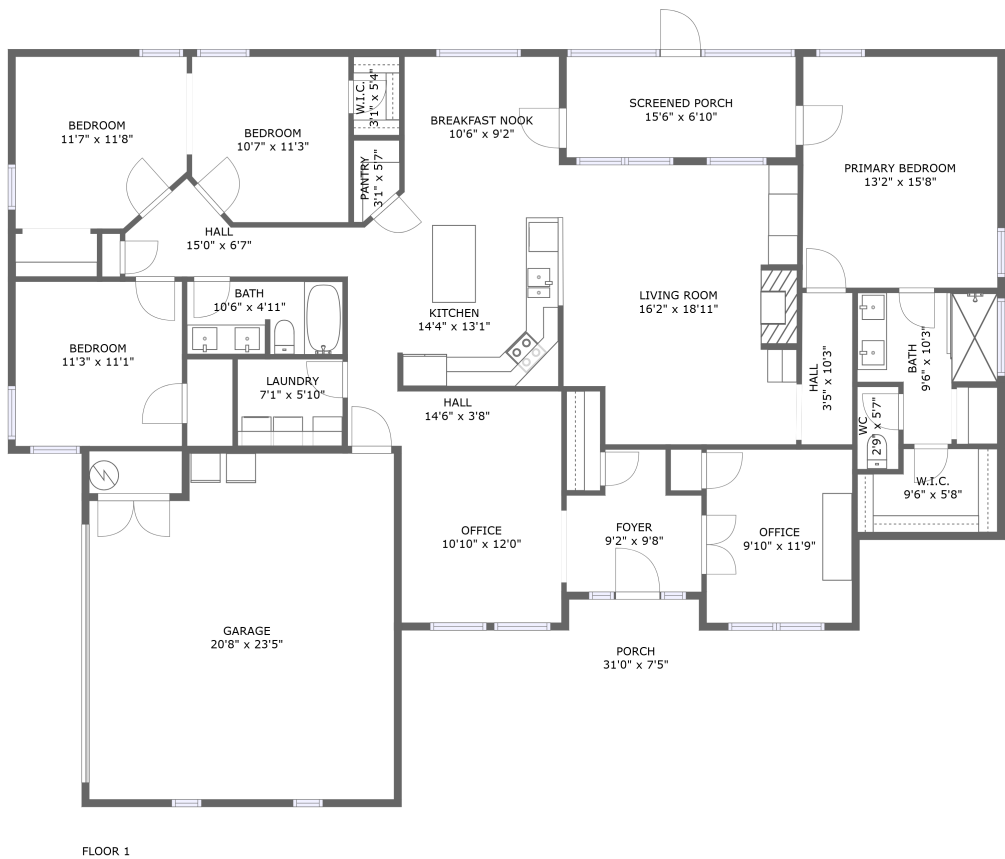





3065 FM1194,Lufkin,TX,US




Property summary


 **1** Garages


 **4** Bedrooms

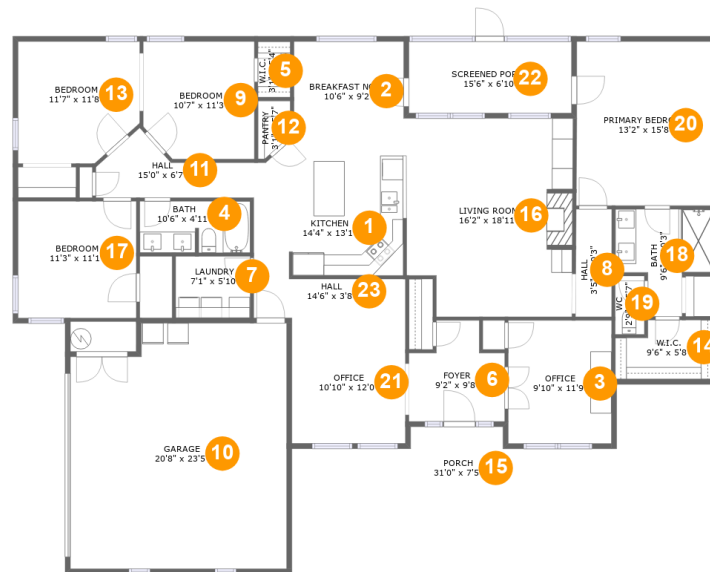
 **2** Bathrooms

 **0** Half baths

 **1** Floors

 **2,145** Gross living area sqft

 **2,954** Total sqft

3065 FM1194,Lufkin,TX,US

Room dimensions

Floor 1

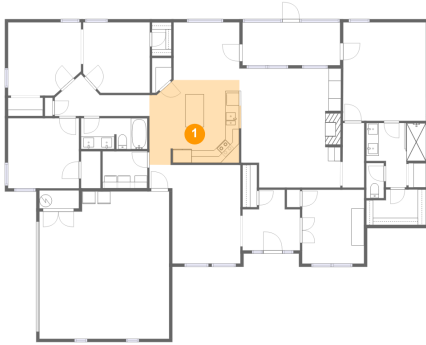
Total sqft: 2954 Living area: 2145

#		Dimensions	sqft	Counted as living area
1	Kitchen	14'4" x 13'1"	183 sq. ft	Yes
2	Breakfast Nook	10'6" x 9'2"	96 sq. ft	Yes
3	Office	9'10" x 11'9"	116 sq. ft	Yes
4	Bath	10'6" x 4'11"	51 sq. ft	Yes
5	W.I.C.	3'1" x 5'4"	17 sq. ft	Yes
6	Foyer	9'2" x 9'8"	72 sq. ft	Yes
7	Laundry	7'1" x 5'10"	42 sq. ft	Yes
8	Hall	3'5" x 10'3"	35 sq. ft	Yes
9	Bedroom	10'7" x 11'3"	114 sq. ft	Yes
10	Garage	20'8" x 23'5"	461 sq. ft	No
11	Hall	15'0" x 6'7"	61 sq. ft	Yes

3065 FM1194,Lufkin,TX,US

#		Dimensions	sqft	Counted as living area
12	Pantry	3'1" x 5'7"	15 sq. ft	Yes
13	Bedroom	11'7" x 11'8"	127 sq. ft	Yes
14	W.I.C.	9'6" x 5'8"	48 sq. ft	Yes
15	Porch	31'0" x 7'5"	183 sq. ft	No
16	Living Room	16'2" x 18'11"	288 sq. ft	Yes
17	Bedroom	11'3" x 11'1"	126 sq. ft	Yes
18	Bath	9'6" x 10'3"	71 sq. ft	Yes
19	WC	2'9" x 5'7"	16 sq. ft	Yes
20	Primary Bedroom	13'2" x 15'8"	206 sq. ft	Yes
21	Office	10'10" x 12'0"	130 sq. ft	Yes
22	Screened Porch	15'6" x 6'10"	106 sq. ft	No
23	Hall	14'6" x 3'8"	54 sq. ft	Yes

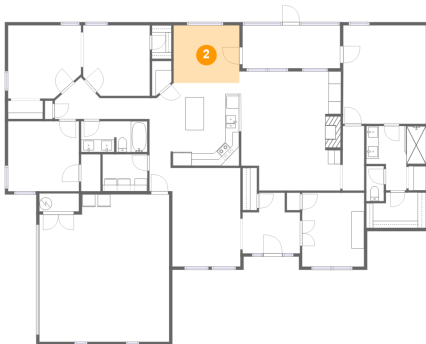
1 Floor 1 - Kitchen



Dimensions: 14'4" x 13'1"
Area: 183 sq. ft
Counted as living area: Yes

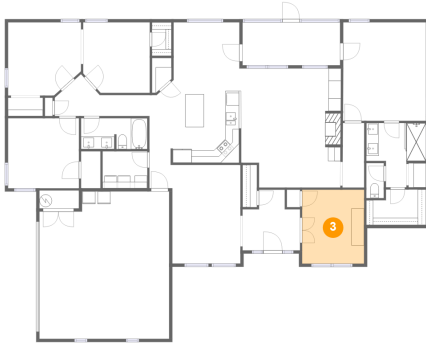
Heated: Yes
Finished: Yes
Enclosed: Yes
Contiguous: Yes
Permitted: Yes
Wet space: No
Addition: No
Conversion: No

2 Floor 1 - Breakfast Nook



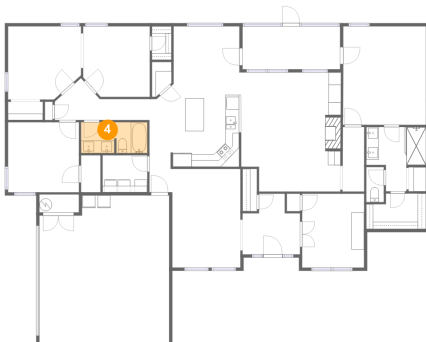
Dimensions: 10'6" x 9'2"
Area: 96 sq. ft
Counted as living area: Yes

Heated: Yes
Finished: Yes
Enclosed: Yes
Contiguous: Yes
Permitted: Yes
Wet space: No
Addition: No
Conversion: No

3 Floor 1 - Office

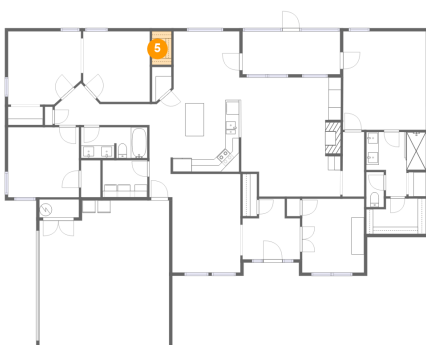
Dimensions: 9'10" x 11'9"
Area: 116 sq. ft
Counted as living area: Yes

Heated: Yes
Finished: Yes
Enclosed: Yes
Contiguous: Yes
Permitted: Yes
Wet space: No
Addition: No
Conversion: No

4 Floor 1 - Bath

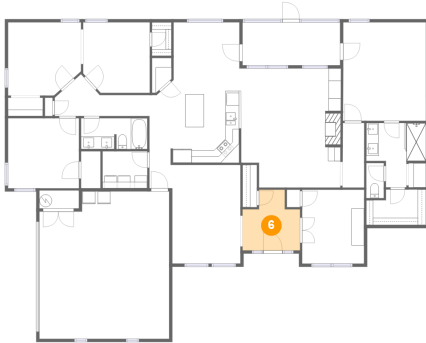
Dimensions: 10'6" x 4'11"
Area: 51 sq. ft
Counted as living area: Yes

Heated: Yes
Finished: Yes
Enclosed: Yes
Contiguous: Yes
Permitted: Yes
Wet space: Yes
Addition: No
Conversion: No

5 Floor 1 - W.I.C.

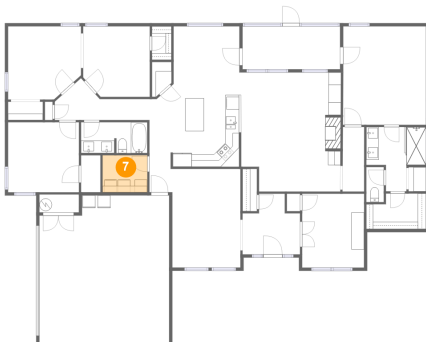
Dimensions: 3'1" x 5'4"
Area: 17 sq. ft
Counted as living area: Yes

Heated: Yes
Finished: Yes
Enclosed: Yes
Contiguous: Yes
Permitted: Yes
Wet space: No
Addition: No
Conversion: No

3065 FM1194,Lufkin,TX,US**6 Floor 1 - Foyer**

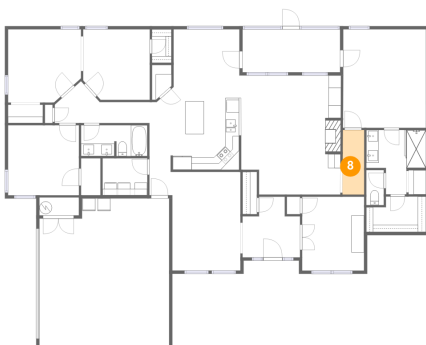
Dimensions: 9'2" x 9'8"
Area: 72 sq. ft
Counted as living area: Yes

Heated: Yes
Finished: Yes
Enclosed: Yes
Contiguous: Yes
Permitted: Yes
Wet space: No
Addition: No
Conversion: No

7 Floor 1 - Laundry

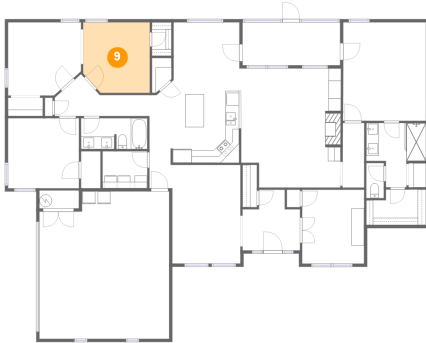
Dimensions: 7'1" x 5'10"
Area: 42 sq. ft
Counted as living area: Yes

Heated: Yes
Finished: Yes
Enclosed: Yes
Contiguous: Yes
Permitted: Yes
Wet space: No
Addition: No
Conversion: No

8 Floor 1 - Hall

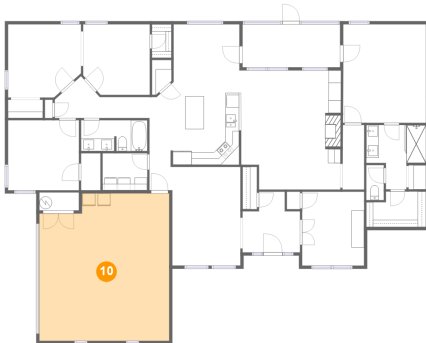
Dimensions: 3'5" x 10'3"
Area: 35 sq. ft
Counted as living area: Yes

Heated: Yes
Finished: Yes
Enclosed: Yes
Contiguous: Yes
Permitted: Yes
Wet space: No
Addition: No
Conversion: No

9 Floor 1 - Bedroom

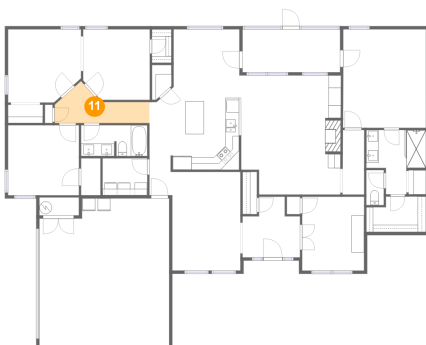
Dimensions: 10'7" x 11'3"
Area: 114 sq. ft
Counted as living area: Yes

Heated: Yes
Finished: Yes
Enclosed: Yes
Contiguous: Yes
Permitted: Yes
Wet space: No
Addition: No
Conversion: No

10 Floor 1 - Garage

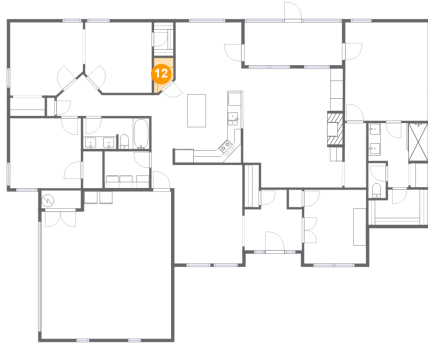
Dimensions: 20'8" x 23'5"
Area: 461 sq. ft
Counted as living area: No

Heated: No
Finished: No
Enclosed: Yes
Contiguous: Yes
Permitted: Yes
Wet space: No
Addition: No
Conversion: No

11 Floor 1 - Hall

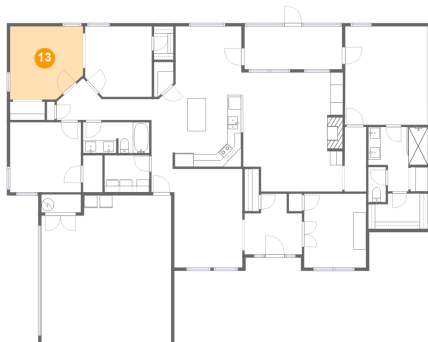
Dimensions: 15'0" x 6'7"
Area: 61 sq. ft
Counted as living area: Yes

Heated: Yes
Finished: Yes
Enclosed: Yes
Contiguous: Yes
Permitted: Yes
Wet space: No
Addition: No
Conversion: No

12 Floor 1 - Pantry

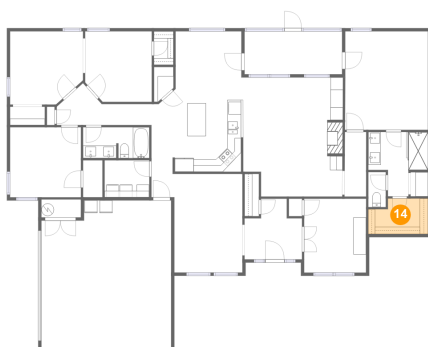
Dimensions: 3'1" x 5'7"
Area: 15 sq. ft
Counted as living area: Yes

Heated: Yes
Finished: Yes
Enclosed: Yes
Contiguous: Yes
Permitted: Yes
Wet space: No
Addition: No
Conversion: No

13 Floor 1 - Bedroom

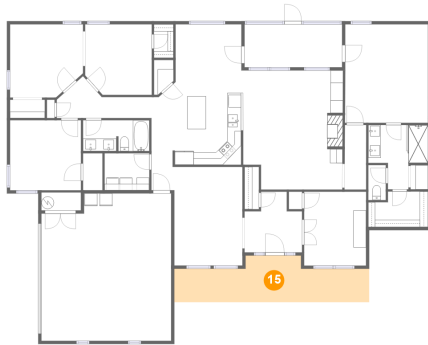
Dimensions: 11'7" x 11'8"
Area: 127 sq. ft
Counted as living area: Yes

Heated: Yes
Finished: Yes
Enclosed: Yes
Contiguous: Yes
Permitted: Yes
Wet space: No
Addition: No
Conversion: No

14 Floor 1 - W.I.C.

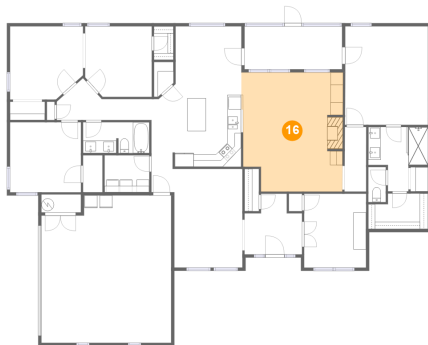
Dimensions: 9'6" x 5'8"
Area: 48 sq. ft
Counted as living area: Yes

Heated: Yes
Finished: Yes
Enclosed: Yes
Contiguous: Yes
Permitted: Yes
Wet space: No
Addition: No
Conversion: No

3065 FM1194,Lufkin,TX,US**15 Floor 1 - Porch**

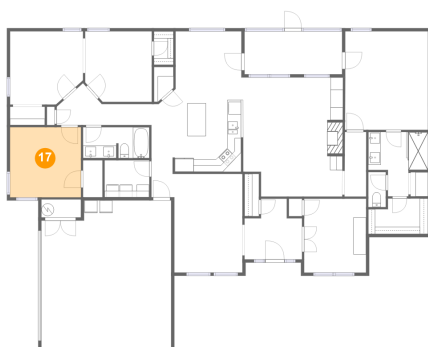
Dimensions: 31'0" x 7'5"
Area: 183 sq. ft
Counted as living area: No

Heated: No
Finished: Yes
Enclosed: No
Contiguous: Yes
Permitted: Yes
Wet space: No
Addition: No
Conversion: No

16 Floor 1 - Living Room

Dimensions: 16'2" x 18'11"
Area: 288 sq. ft
Counted as living area: Yes

Heated: Yes
Finished: Yes
Enclosed: Yes
Contiguous: Yes
Permitted: Yes
Wet space: No
Addition: No
Conversion: No

17 Floor 1 - Bedroom

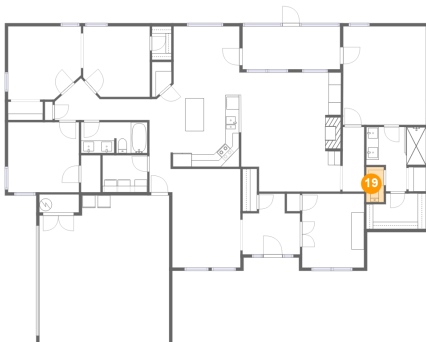
Dimensions: 11'3" x 11'1"
Area: 126 sq. ft
Counted as living area: Yes

Heated: Yes
Finished: Yes
Enclosed: Yes
Contiguous: Yes
Permitted: Yes
Wet space: No
Addition: No
Conversion: No

18 Floor 1 - Bath

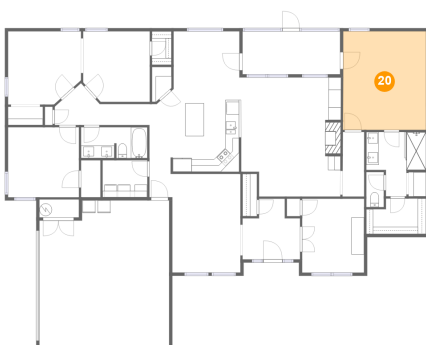
Dimensions: 9'6" x 10'3"
Area: 71 sq. ft
Counted as living area: Yes

Heated: Yes
Finished: Yes
Enclosed: Yes
Contiguous: Yes
Permitted: Yes
Wet space: Yes
Addition: No
Conversion: No

19 Floor 1 - WC

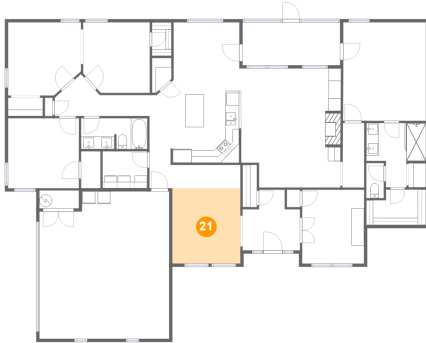
Dimensions: 2'9" x 5'7"
Area: 16 sq. ft
Counted as living area: Yes

Heated: Yes
Finished: Yes
Enclosed: Yes
Contiguous: Yes
Permitted: Yes
Wet space: Yes
Addition: No
Conversion: No

20 Floor 1 - Primary Bedroom

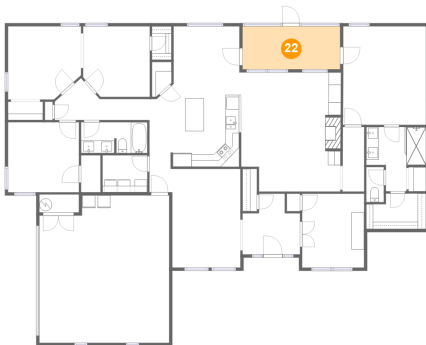
Dimensions: 13'2" x 15'8"
Area: 206 sq. ft
Counted as living area: Yes

Heated: Yes
Finished: Yes
Enclosed: Yes
Contiguous: Yes
Permitted: Yes
Wet space: No
Addition: No
Conversion: No

21 Floor 1 - Office

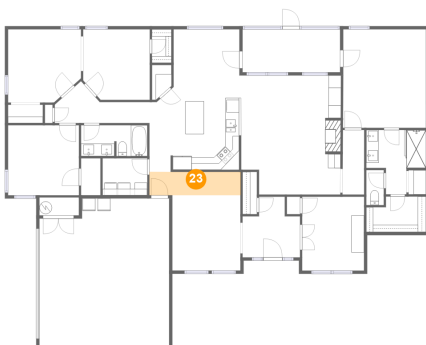
Dimensions: 10'10" x 12'0"
Area: 130 sq. ft
Counted as living area: Yes

Heated: Yes
Finished: Yes
Enclosed: Yes
Contiguous: Yes
Permitted: Yes
Wet space: No
Addition: No
Conversion: No

22 Floor 1 - Screened Porch

Dimensions: 15'6" x 6'10"
Area: 106 sq. ft
Counted as living area: No

Heated: No
Finished: Yes
Enclosed: No
Contiguous: Yes
Permitted: Yes
Wet space: No
Addition: No
Conversion: No

23 Floor 1 - Hall

Dimensions: 14'6" x 3'8"
Area: 54 sq. ft
Counted as living area: Yes

Heated: Yes
Finished: Yes
Enclosed: Yes
Contiguous: Yes
Permitted: Yes
Wet space: No
Addition: No
Conversion: No