

Home report

8336 Chippenham Road, Stratford Hills, Richmond, Richmond city, Virginia, United States, 23235



Total Area: 1947 sq. ft

Below Ground: 643 sq. ft, Floor 2: 601 sq. ft, Floor 3: 703 sq. ft

Excluded: Screened porch 222 sq. ft, Embedded window 12 sq. ft, Fireplace 8 sq. ft, Walls: 182 sq. ft

Property summary

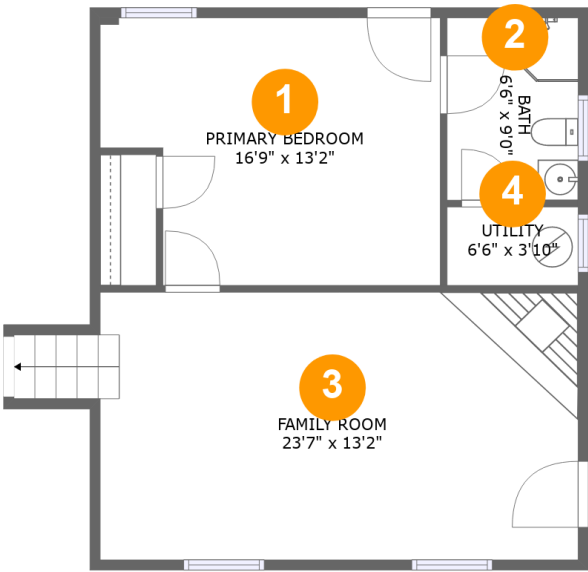
 **3** Floors

 **4** Bedrooms

 **3** Bathrooms

Home report

8336 Chippenham Road, Stratford Hills, Richmond, Richmond city, Virginia, United States, 23235



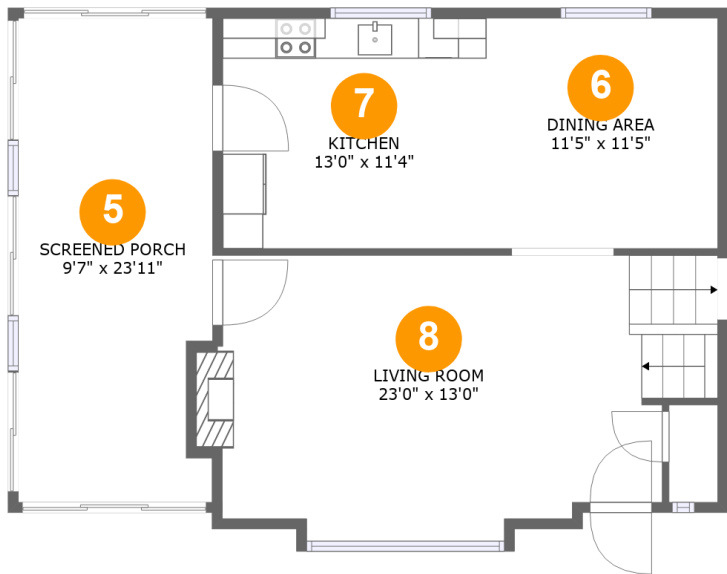
Room dimensions

Floor 1 Below ground Total:643sqft Excluded: 0sqft

#		Max Dimensions	sqft	Included
1	Primary Bedroom	16'9" x 13'2"	200 sq. ft	Yes
2	Bath	6'6" x 9'0"	58 sq. ft	Yes
3	Family Room	23'7" x 13'2"	324 sq. ft	Yes
4	Utility	6'6" x 3'10"	25 sq. ft	Yes

Home report

8336 Chippenham Road, Stratford Hills, Richmond, Richmond city, Virginia, United States, 23235



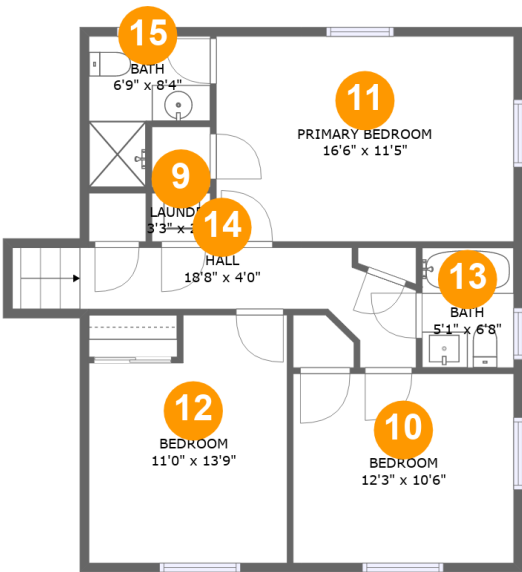
Room dimensions

Floor 2 Total:601sqft Excluded: 242sqft

#		Max Dimensions	sqft	Included
5	Screened Porch	9'7" x 23'11"	222 sq. ft	No
6	Dining Area	11'5" x 11'5"	130 sq. ft	Yes
7	Kitchen	13'0" x 11'4"	148 sq. ft	Yes
8	Living Room	23'0" x 13'0"	304 sq. ft	Yes

Home report

8336 Chippenham Road, Stratford Hills, Richmond, Richmond city, Virginia, United States, 23235



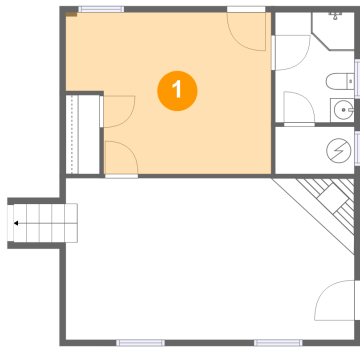
Room dimensions

Floor 3 Total:703sqft Excluded: 0sqft

#		Max Dimensions	sqft	Included
9	Laundry	3'3" x 2'8"	9 sq. ft	Yes
10	Bedroom	12'3" x 10'6"	128 sq. ft	Yes
11	Primary Bedroom	16'6" x 11'5"	188 sq. ft	Yes
12	Bedroom	11'0" x 13'9"	137 sq. ft	Yes
13	Bath	5'1" x 6'8"	34 sq. ft	Yes
14	Hall	18'8" x 4'0"	82 sq. ft	Yes
15	Bath	6'9" x 8'4"	43 sq. ft	Yes

8336 Chippenham Road, Stratford Hills, Richmond, Richmond city, Virginia, United States, 23235

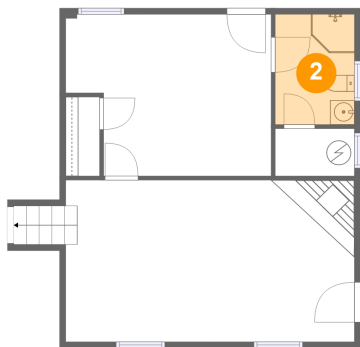
1 Floor 1 - Primary Bedroom



Max Dimensions: 16'9" x 13'2"
Calculated Area: 200 sq. ft
Included: Yes

Heated: Yes
Finished: Yes
Enclosed: Yes
Contiguous: Yes
Permitted: Yes
Wet space: No
Addition: No
Conversion: No

2 Floor 1 - Bath

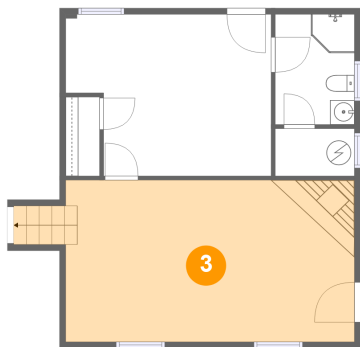


Max Dimensions: 6'6" x 9'0"
Calculated Area: 58 sq. ft
Included: Yes

Heated: Yes
Finished: Yes
Enclosed: Yes
Contiguous: Yes
Permitted: Yes
Wet space: Yes
Addition: No
Conversion: No

8336 Chippenham Road, Stratford Hills, Richmond, Richmond city, Virginia, United States, 23235

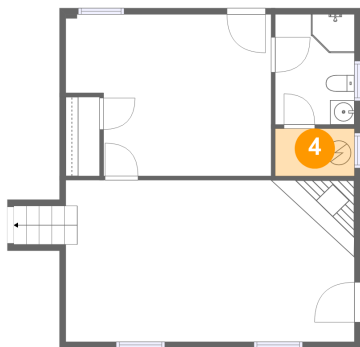
3 Floor 1 - Family Room



Max Dimensions: 23'7" x 13'2"
Calculated Area: 324 sq. ft
Included: Yes

Heated: Yes
Finished: Yes
Enclosed: Yes
Contiguous: Yes
Permitted: Yes
Wet space: No
Addition: No
Conversion: No

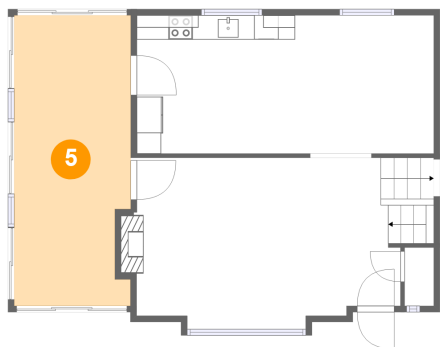
4 Floor 1 - Utility



Max Dimensions: 6'6" x 3'10"
Calculated Area: 25 sq. ft
Included: Yes

Heated: Yes
Finished: Yes
Enclosed: Yes
Contiguous: Yes
Permitted: Yes
Wet space: No
Addition: No
Conversion: No

5 Floor 2 - Screened Porch

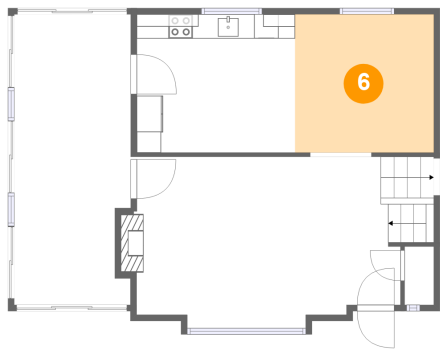


Max Dimensions: 9'7" x 23'11"
Calculated Area: 222 sq. ft
Included: No

Heated: No
Finished: Yes
Enclosed: No
Contiguous: Yes
Permitted: Yes
Wet space: No
Addition: No
Conversion: No

8336 Chippenham Road, Stratford Hills, Richmond, Richmond city, Virginia, United States, 23235

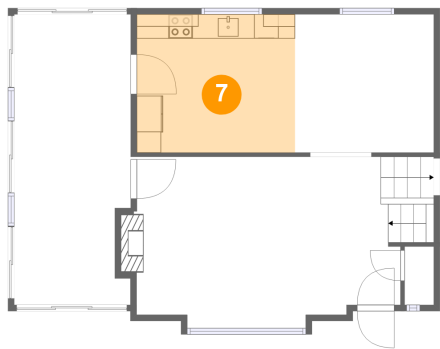
6 Floor 2 - Dining Area



Max Dimensions: 11'5" x 11'5"
Calculated Area: 130 sq. ft
Included: Yes

Heated: Yes
Finished: Yes
Enclosed: Yes
Contiguous: Yes
Permitted: Yes
Wet space: No
Addition: No
Conversion: No

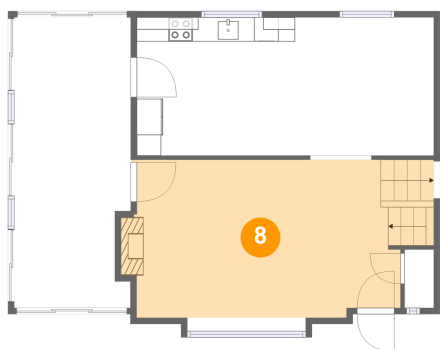
7 Floor 2 - Kitchen



Max Dimensions: 13'0" x 11'4"
Calculated Area: 148 sq. ft
Included: Yes

Heated: Yes
Finished: Yes
Enclosed: Yes
Contiguous: Yes
Permitted: Yes
Wet space: No
Addition: No
Conversion: No

8 Floor 2 - Living Room



Max Dimensions: 23'0" x 13'0"
Calculated Area: 304 sq. ft
Included: Yes

Heated: Yes
Finished: Yes
Enclosed: Yes
Contiguous: Yes
Permitted: Yes
Wet space: No
Addition: No
Conversion: No

8336 Chippenham Road, Stratford Hills, Richmond, Richmond city, Virginia, United States, 23235

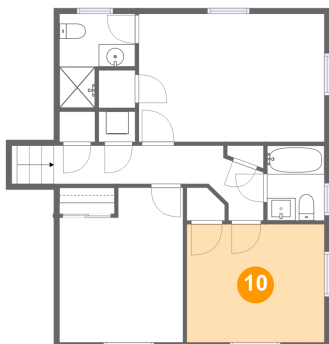
9 Floor 3 - Laundry



Max Dimensions: 3'3" x 2'8"
Calculated Area: 9 sq. ft
Included: Yes

Heated: Yes
Finished: Yes
Enclosed: Yes
Contiguous: Yes
Permitted: Yes
Wet space: No
Addition: No
Conversion: No

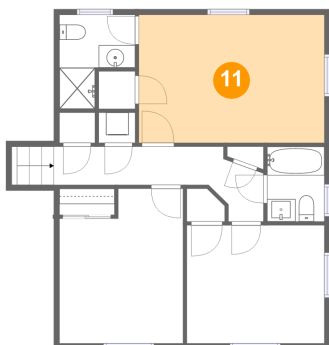
10 Floor 3 - Bedroom



Max Dimensions: 12'3" x 10'6"
Calculated Area: 128 sq. ft
Included: Yes

Heated: Yes
Finished: Yes
Enclosed: Yes
Contiguous: Yes
Permitted: Yes
Wet space: No
Addition: No
Conversion: No

11 Floor 3 - Primary Bedroom



Max Dimensions: 16'6" x 11'5"
Calculated Area: 188 sq. ft
Included: Yes

Heated: Yes
Finished: Yes
Enclosed: Yes
Contiguous: Yes
Permitted: Yes
Wet space: No
Addition: No
Conversion: No

8336 Chippenham Road, Stratford Hills, Richmond, Richmond city, Virginia, United States, 23235

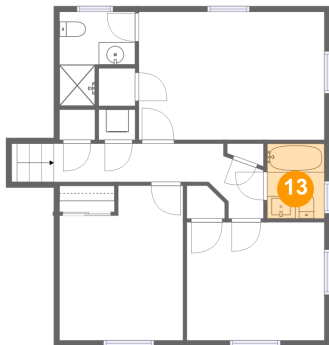
12 Floor 3 - Bedroom



Max Dimensions: 11'0" x 13'9"
Calculated Area: 137 sq. ft
Included: Yes

Heated: Yes
Finished: Yes
Enclosed: Yes
Contiguous: Yes
Permitted: Yes
Wet space: No
Addition: No
Conversion: No

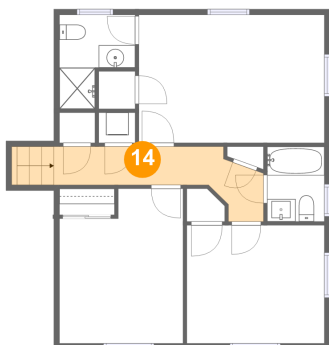
13 Floor 3 - Bath



Max Dimensions: 5'1" x 6'8"
Calculated Area: 34 sq. ft
Included: Yes

Heated: Yes
Finished: Yes
Enclosed: Yes
Contiguous: Yes
Permitted: Yes
Wet space: Yes
Addition: No
Conversion: No

14 Floor 3 - Hall

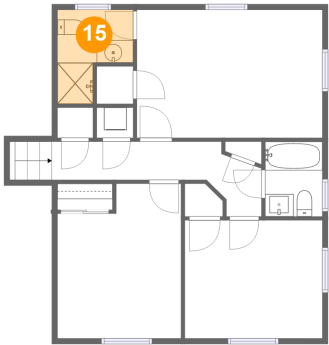


Max Dimensions: 18'8" x 4'0"
Calculated Area: 82 sq. ft
Included: Yes

Heated: Yes
Finished: Yes
Enclosed: Yes
Contiguous: Yes
Permitted: Yes
Wet space: No
Addition: No
Conversion: No

8336 Chippenham Road, Stratford Hills, Richmond, Richmond city, Virginia, United States, 23235

15 Floor 3 - Bath



Max Dimensions: 6'9" x 8'4"
Calculated Area: 43 sq. ft
Included: Yes

Heated: Yes
Finished: Yes
Enclosed: Yes
Contiguous: Yes
Permitted: Yes
Wet space: Yes
Addition: No
Conversion: No