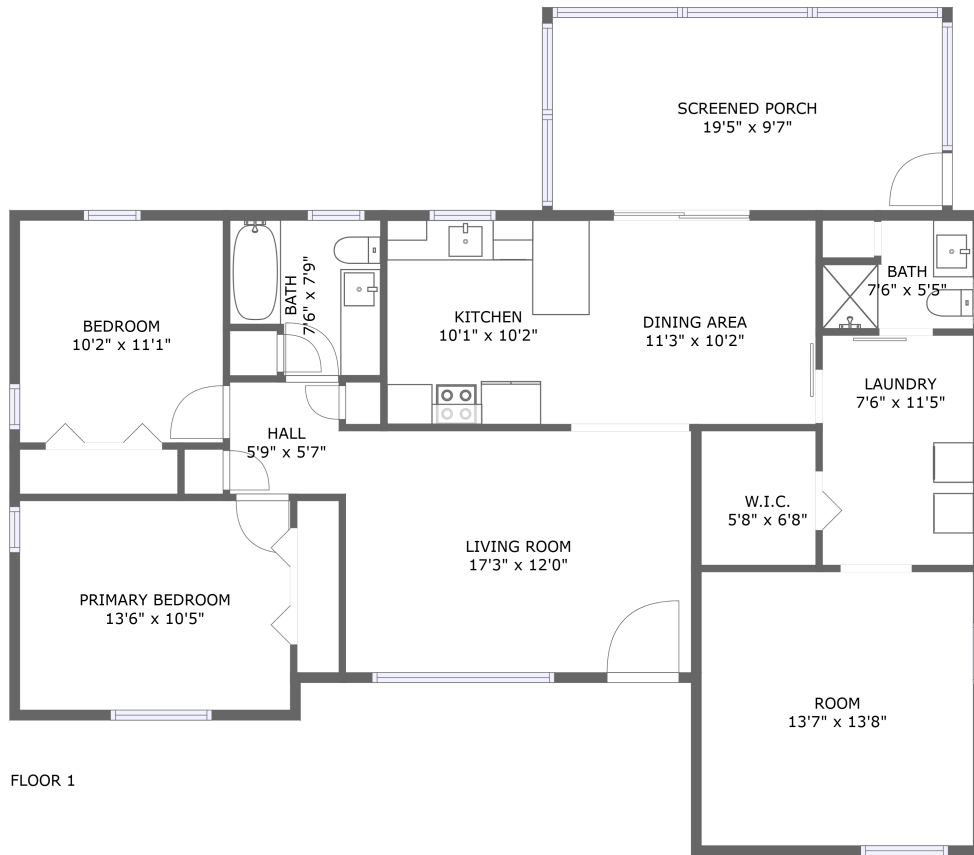



1220 Parkview Lane, Lakeside Heights, Largo, Pinellas County, Florida, United States, 33770



Property summary

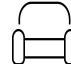
 **0** Garages

 **2** Bedrooms

 **2** Bathrooms

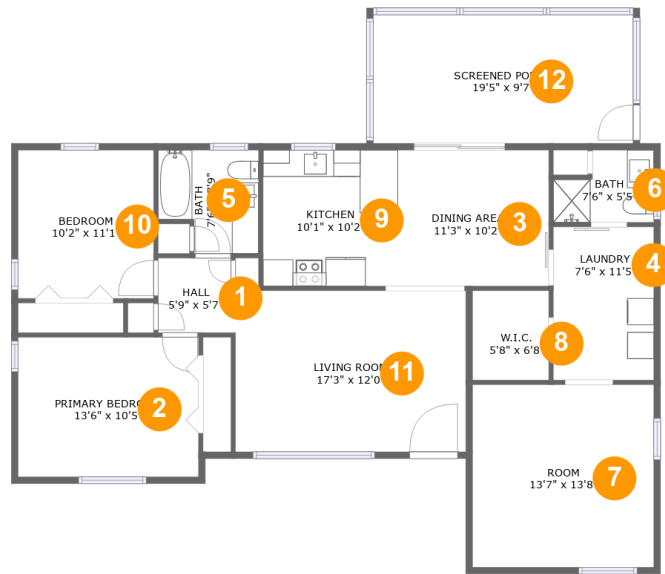
 **0** Half baths

 **1** Floors

 **1,294** Gross living area sqft

 **1,501** Total sqft

1220 Parkview Lane, Lakeside Heights, Largo, Pinellas County, Florida, United States, 33770



Room dimensions

Floor 1

Total sqft: 1501

Living area: 1294

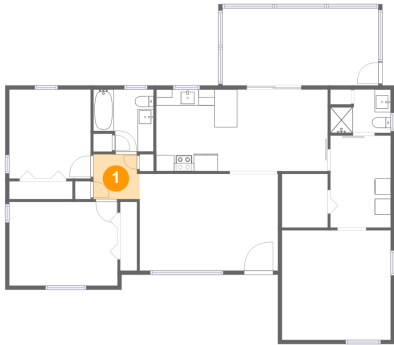
#		Dimensions	sqft	Counted as living area
1	Hall	5'9" x 5'7"	31 sq. ft	Yes
2	Primary Bedroom	13'6" x 10'5"	141 sq. ft	Yes
3	Dining Area	11'3" x 10'2"	115 sq. ft	Yes
4	Laundry	7'6" x 11'5"	86 sq. ft	Yes
5	Bath	7'6" x 7'9"	51 sq. ft	Yes
6	Bath	7'6" x 5'5"	34 sq. ft	Yes
7	Room	13'7" x 13'8"	185 sq. ft	Yes
8	W.I.C.	5'8" x 6'8"	38 sq. ft	Yes
9	Kitchen	10'1" x 10'2"	102 sq. ft	Yes
10	Bedroom	10'2" x 11'1"	112 sq. ft	Yes
11	Living Room	17'3" x 12'0"	207 sq. ft	Yes

**1220 Parkview Lane, Lakeside Heights, Largo,
Pinellas County, Florida, United States, 33770**

#		Dimensions	sqft	Counted as living area
12	Screened Porch	19'5" x 9'7"	187 sq. ft	No

1220 Parkview Lane, Lakeside Heights, Largo, Pinellas County, Florida, United States, 33770

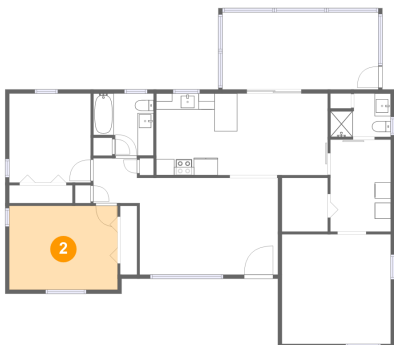
1 Floor 1 - Hall



Dimensions: 5'9" x 5'7"
Area: 31 sq. ft
Counted as living area: Yes

Heated: Yes
Finished: Yes
Enclosed: Yes
Contiguous: Yes
Permitted: Yes
Wet space: No
Addition: No
Conversion: No

2 Floor 1 - Primary Bedroom

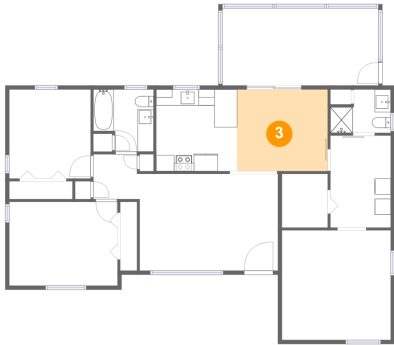


Dimensions: 13'6" x 10'5"
Area: 141 sq. ft
Counted as living area: Yes

Heated: Yes
Finished: Yes
Enclosed: Yes
Contiguous: Yes
Permitted: Yes
Wet space: No
Addition: No
Conversion: No

**1220 Parkview Lane, Lakeside Heights, Largo,
Pinellas County, Florida, United States, 33770**

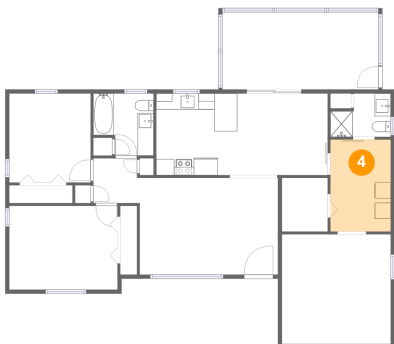
3 Floor 1 - Dining Area



Dimensions: 11'3" x 10'2"
Area: 115 sq. ft
Counted as living area: Yes

Heated: Yes
Finished: Yes
Enclosed: Yes
Contiguous: Yes
Permitted: Yes
Wet space: No
Addition: No
Conversion: No

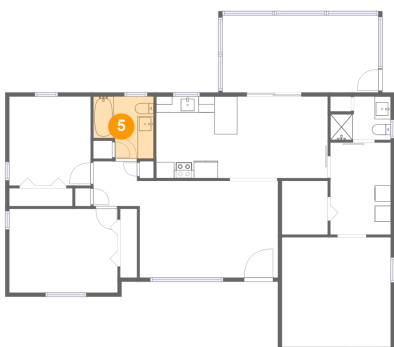
4 Floor 1 - Laundry



Dimensions: 7'6" x 11'5"
Area: 86 sq. ft
Counted as living area: Yes

Heated: Yes
Finished: Yes
Enclosed: Yes
Contiguous: Yes
Permitted: Yes
Wet space: No
Addition: No
Conversion: No

5 Floor 1 - Bath

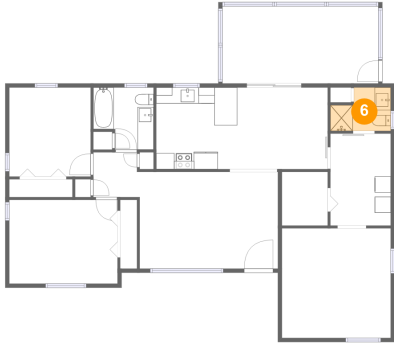


Dimensions: 7'6" x 7'9"
Area: 51 sq. ft
Counted as living area: Yes

Heated: Yes
Finished: Yes
Enclosed: Yes
Contiguous: Yes
Permitted: Yes
Wet space: Yes
Addition: No
Conversion: No

**1220 Parkview Lane, Lakeside Heights, Largo,
Pinellas County, Florida, United States, 33770**

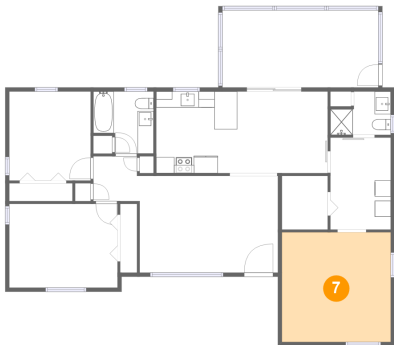
6 Floor 1 - Bath



Dimensions: 7'6" x 5'5"
Area: 34 sq. ft
Counted as living area: Yes

Heated: Yes
Finished: Yes
Enclosed: Yes
Contiguous: Yes
Permitted: Yes
Wet space: Yes
Addition: No
Conversion: No

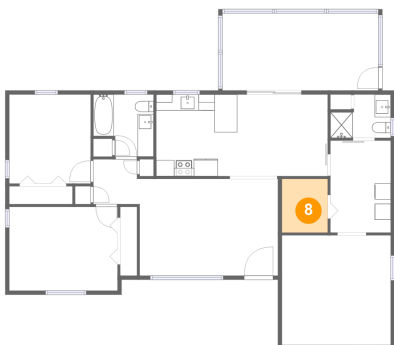
7 Floor 1 - Room



Dimensions: 13'7" x 13'8"
Area: 185 sq. ft
Counted as living area: Yes

Heated: Yes
Finished: Yes
Enclosed: Yes
Contiguous: Yes
Permitted: Yes
Wet space: No
Addition: No
Conversion: No

8 Floor 1 - W.I.C.

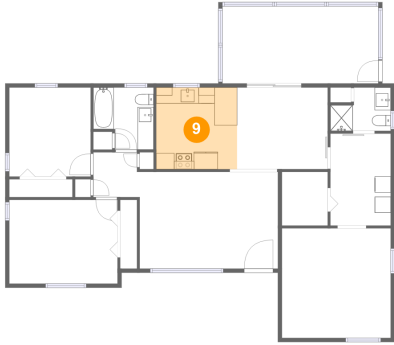


Dimensions: 5'8" x 6'8"
Area: 38 sq. ft
Counted as living area: Yes

Heated: Yes
Finished: Yes
Enclosed: Yes
Contiguous: Yes
Permitted: Yes
Wet space: No
Addition: No
Conversion: No

1220 Parkview Lane, Lakeside Heights, Largo, Pinellas County, Florida, United States, 33770

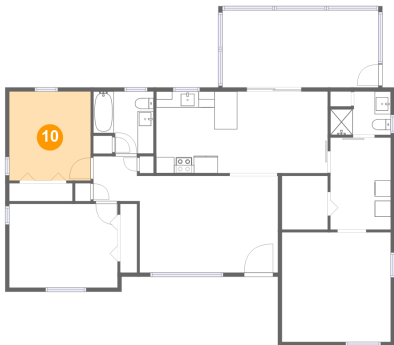
9 Floor 1 - Kitchen



Dimensions: 10'1" x 10'2"
Area: 102 sq. ft
Counted as living area: Yes

Heated: Yes
Finished: Yes
Enclosed: Yes
Contiguous: Yes
Permitted: Yes
Wet space: No
Addition: No
Conversion: No

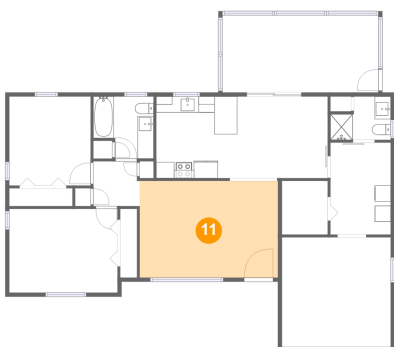
10 Floor 1 - Bedroom



Dimensions: 10'2" x 11'1"
Area: 112 sq. ft
Counted as living area: Yes

Heated: Yes
Finished: Yes
Enclosed: Yes
Contiguous: Yes
Permitted: Yes
Wet space: No
Addition: No
Conversion: No

11 Floor 1 - Living Room

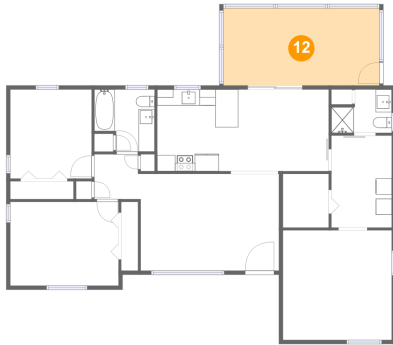


Dimensions: 17'3" x 12'0"
Area: 207 sq. ft
Counted as living area: Yes

Heated: Yes
Finished: Yes
Enclosed: Yes
Contiguous: Yes
Permitted: Yes
Wet space: No
Addition: No
Conversion: No

**1220 Parkview Lane, Lakeside Heights, Largo,
Pinellas County, Florida, United States, 33770**

12 Floor 1 - Screened Porch



Dimensions: 19'5" x 9'7"
Area: 187 sq. ft
Counted as living area: No

Heated: No
Finished: Yes
Enclosed: No
Contiguous: Yes
Permitted: Yes
Wet space: No
Addition: No
Conversion: No