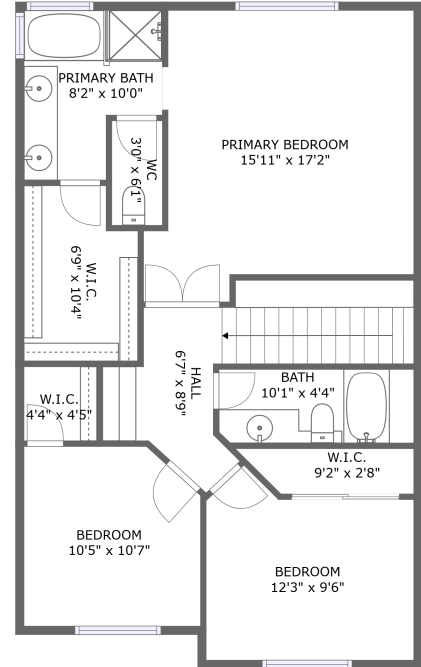


1696 Panther Lane, Beaumont, Riverside County, California, United States, 92223




FLOOR 1



FLOOR 2

Property summary

 **1** Garages

 **4** Bedrooms

 **3** Bathrooms

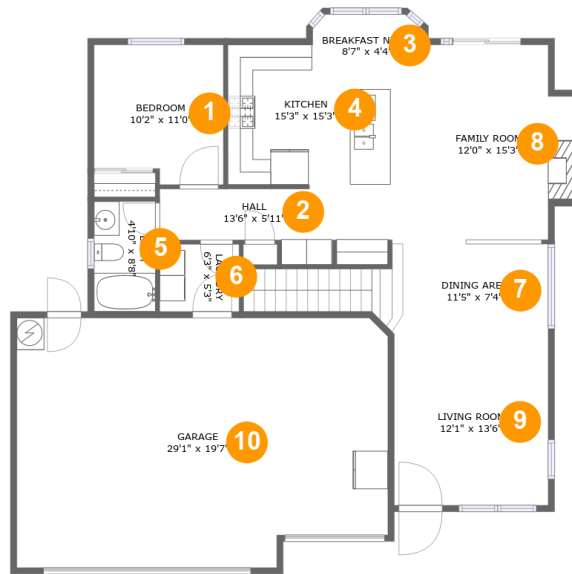
 **0** Half baths

 **2** Floors

 **1,969** Gross living area sqft

 **2,546** Total sqft

1696 Panther Lane, Beaumont, Riverside County, California, United States, 92223



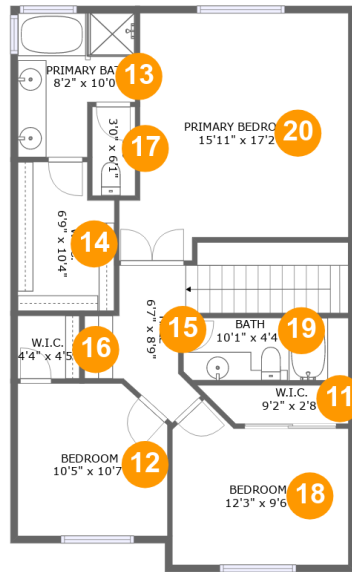
Room dimensions

Floor 1

Total sqft: 1619 Living area: 1042

#		Dimensions	sqft	Counted as living area
1	Bedroom	10'2" x 11'0"	105 sq. ft	Yes
2	Hall	13'6" x 5'11"	62 sq. ft	Yes
3	Breakfast Nook	8'7" x 4'4"	36 sq. ft	Yes
4	Kitchen	15'3" x 15'3"	189 sq. ft	Yes
5	Bath	4'10" x 8'8"	42 sq. ft	Yes
6	Laundry	6'3" x 5'3"	33 sq. ft	Yes
7	Dining Area	11'5" x 7'4"	130 sq. ft	Yes
8	Family Room	12'0" x 15'3"	168 sq. ft	Yes
9	Living Room	12'1" x 13'6"	163 sq. ft	Yes
10	Garage	29'1" x 19'7"	546 sq. ft	No

1696 Panther Lane, Beaumont, Riverside County, California, United States, 92223



Room dimensions

Floor 2

Total sqft: 927 Living area: 927

#		Dimensions	sqft	Counted as living area
11	W.I.C.	9'2" x 2'8"	25 sq. ft	Yes
12	Bedroom	10'5" x 10'7"	106 sq. ft	Yes
13	Primary Bath	8'2" x 10'0"	69 sq. ft	Yes
14	W.I.C.	6'9" x 10'4"	65 sq. ft	Yes
15	Hall	6'7" x 8'9"	109 sq. ft	Yes
16	W.I.C.	4'4" x 4'5"	19 sq. ft	Yes
17	WC	3'0" x 6'1"	18 sq. ft	Yes
18	Bedroom	12'3" x 9'6"	121 sq. ft	Yes
19	Bath	10'1" x 4'4"	50 sq. ft	Yes
20	Primary Bedroom	15'11" x 17'2"	239 sq. ft	Yes

1696 Panther Lane, Beaumont, Riverside County, California, United States, 92223

1 Floor 1 - Bedroom



Dimensions: 10'2" x 11'0"
Area: 105 sq. ft
Counted as living area: Yes

Heated: Yes
Finished: Yes
Enclosed: Yes
Contiguous: Yes
Permitted: Yes
Wet space: No
Addition: No
Conversion: No

2 Floor 1 - Hall



Dimensions: 13'6" x 5'11"
Area: 62 sq. ft
Counted as living area: Yes

Heated: Yes
Finished: Yes
Enclosed: Yes
Contiguous: Yes
Permitted: Yes
Wet space: No
Addition: No
Conversion: No

1696 Panther Lane, Beaumont, Riverside County, California, United States, 92223

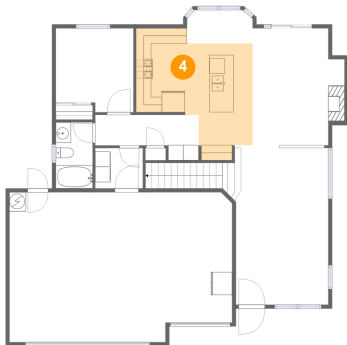
3 Floor 1 - Breakfast Nook



Dimensions: 8'7" x 4'4"
Area: 36 sq. ft
Counted as living area: Yes

Heated: Yes
Finished: Yes
Enclosed: Yes
Contiguous: Yes
Permitted: Yes
Wet space: No
Addition: No
Conversion: No

4 Floor 1 - Kitchen



Dimensions: 15'3" x 15'3"
Area: 189 sq. ft
Counted as living area: Yes

Heated: Yes
Finished: Yes
Enclosed: Yes
Contiguous: Yes
Permitted: Yes
Wet space: No
Addition: No
Conversion: No

5 Floor 1 - Bath



Dimensions: 4'10" x 8'8"
Area: 42 sq. ft
Counted as living area: Yes

Heated: Yes
Finished: Yes
Enclosed: Yes
Contiguous: Yes
Permitted: Yes
Wet space: Yes
Addition: No
Conversion: No

1696 Panther Lane, Beaumont, Riverside County, California, United States, 92223

6 Floor 1 - Laundry



Dimensions: 6'3" x 5'3"
Area: 33 sq. ft
Counted as living area: Yes

Heated: Yes
Finished: Yes
Enclosed: Yes
Contiguous: Yes
Permitted: Yes
Wet space: No
Addition: No
Conversion: No

7 Floor 1 - Dining Area



Dimensions: 11'5" x 7'4"
Area: 130 sq. ft
Counted as living area: Yes

Heated: Yes
Finished: Yes
Enclosed: Yes
Contiguous: Yes
Permitted: Yes
Wet space: No
Addition: No
Conversion: No

8 Floor 1 - Family Room



Dimensions: 12'0" x 15'3"
Area: 168 sq. ft
Counted as living area: Yes

Heated: Yes
Finished: Yes
Enclosed: Yes
Contiguous: Yes
Permitted: Yes
Wet space: No
Addition: No
Conversion: No

1696 Panther Lane, Beaumont, Riverside County, California, United States, 92223

9 Floor 1 - Living Room



Dimensions: 12'1" x 13'6"
Area: 163 sq. ft
Counted as living area: Yes

Heated: Yes
Finished: Yes
Enclosed: Yes
Contiguous: Yes
Permitted: Yes
Wet space: No
Addition: No
Conversion: No

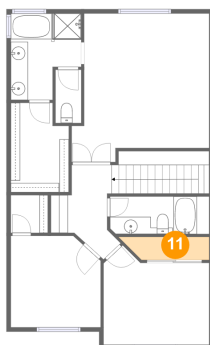
10 Floor 1 - Garage



Dimensions: 29'1" x 19'7"
Area: 546 sq. ft
Counted as living area: No

Heated: No
Finished: No
Enclosed: Yes
Contiguous: Yes
Permitted: Yes
Wet space: No
Addition: No
Conversion: No

11 Floor 2 - W.I.C.

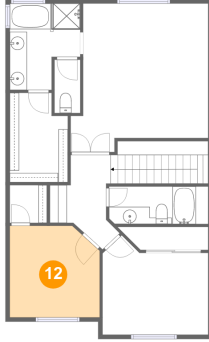


Dimensions: 9'2" x 2'8"
Area: 25 sq. ft
Counted as living area: Yes

Heated: Yes
Finished: Yes
Enclosed: Yes
Contiguous: Yes
Permitted: Yes
Wet space: No
Addition: No
Conversion: No

1696 Panther Lane, Beaumont, Riverside County, California, United States, 92223

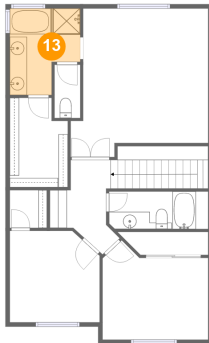
12 Floor 2 - Bedroom



Dimensions: 10'5" x 10'7"
Area: 106 sq. ft
Counted as living area: Yes

Heated: Yes
Finished: Yes
Enclosed: Yes
Contiguous: Yes
Permitted: Yes
Wet space: No
Addition: No
Conversion: No

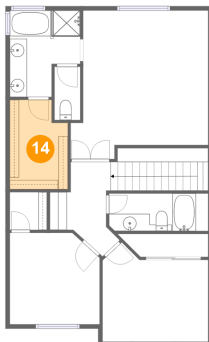
13 Floor 2 - Primary Bath



Dimensions: 8'2" x 10'0"
Area: 69 sq. ft
Counted as living area: Yes

Heated: Yes
Finished: Yes
Enclosed: Yes
Contiguous: Yes
Permitted: Yes
Wet space: Yes
Addition: No
Conversion: No

14 Floor 2 - W.I.C.

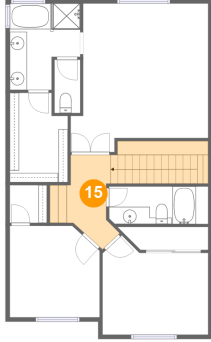


Dimensions: 6'9" x 10'4"
Area: 65 sq. ft
Counted as living area: Yes

Heated: Yes
Finished: Yes
Enclosed: Yes
Contiguous: Yes
Permitted: Yes
Wet space: No
Addition: No
Conversion: No

**1696 Panther Lane, Beaumont, Riverside County,
California, United States, 92223**

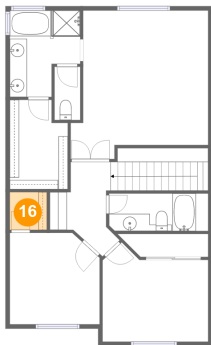
15 Floor 2 - Hall



Dimensions: 6'7" x 8'9"
Area: 109 sq. ft
Counted as living area: Yes

Heated: Yes
Finished: Yes
Enclosed: Yes
Contiguous: Yes
Permitted: Yes
Wet space: No
Addition: No
Conversion: No

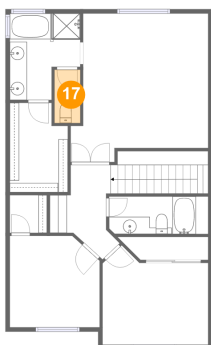
16 Floor 2 - W.I.C.



Dimensions: 4'4" x 4'5"
Area: 19 sq. ft
Counted as living area: Yes

Heated: Yes
Finished: Yes
Enclosed: Yes
Contiguous: Yes
Permitted: Yes
Wet space: No
Addition: No
Conversion: No

17 Floor 2 - WC

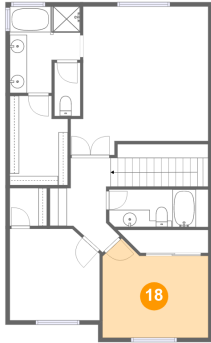


Dimensions: 3'0" x 6'1"
Area: 18 sq. ft
Counted as living area: Yes

Heated: Yes
Finished: Yes
Enclosed: Yes
Contiguous: Yes
Permitted: Yes
Wet space: Yes
Addition: No
Conversion: No

**1696 Panther Lane, Beaumont, Riverside County,
California, United States, 92223**

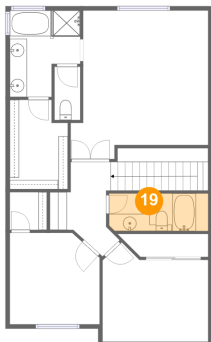
18 Floor 2 - Bedroom



Dimensions: 12'3" x 9'6"
Area: 121 sq. ft
Counted as living area: Yes

Heated: Yes
Finished: Yes
Enclosed: Yes
Contiguous: Yes
Permitted: Yes
Wet space: No
Addition: No
Conversion: No

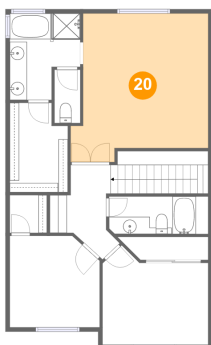
19 Floor 2 - Bath



Dimensions: 10'1" x 4'4"
Area: 50 sq. ft
Counted as living area: Yes

Heated: Yes
Finished: Yes
Enclosed: Yes
Contiguous: Yes
Permitted: Yes
Wet space: Yes
Addition: No
Conversion: No

20 Floor 2 - Primary Bedroom



Dimensions: 15'11" x 17'2"
Area: 239 sq. ft
Counted as living area: Yes

Heated: Yes
Finished: Yes
Enclosed: Yes
Contiguous: Yes
Permitted: Yes
Wet space: No
Addition: No
Conversion: No