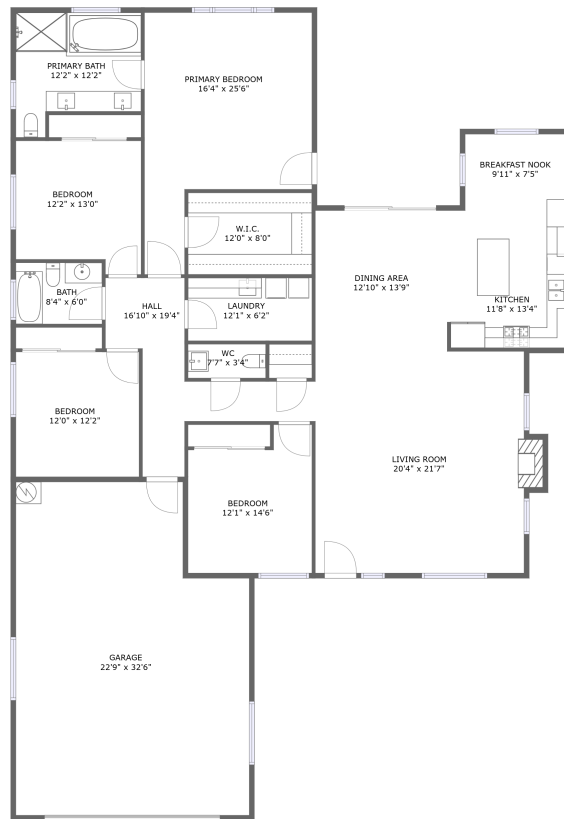



# 5880 Silverado Place, Paso Robles, San Luis Obispo County, California, United States, 93446



FLOOR 1

## Property summary


 **1** Garages

 **4** Bedrooms

 **2** Bathrooms

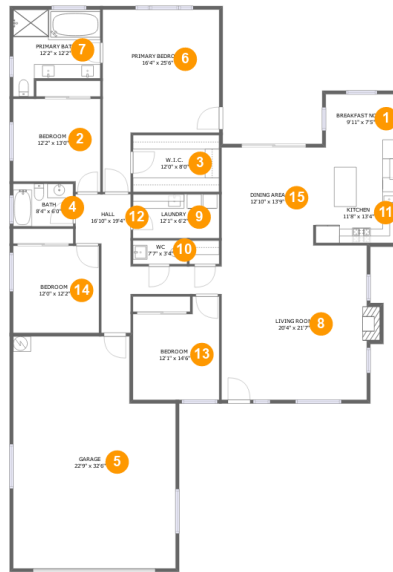
 **1** Half baths

 **1** Floors

 **2,395**  
Gross living  
area sqft

 **3,123**  
Total sqft

# 5880 Silverado Place, Paso Robles, San Luis Obispo County, California, United States, 93446



## Room dimensions

Floor 1

Total sqft: 3123 Living area: 2395

#		Dimensions	sqft	Counted as living area
1	Breakfast Nook	9'11" x 7'5"	74 sq. ft	Yes
2	Bedroom	12'2" x 13'0"	146 sq. ft	Yes
3	W.I.C.	12'0" x 8'0"	96 sq. ft	Yes
4	Bath	8'4" x 6'0"	50 sq. ft	Yes
5	Garage	22'9" x 32'6"	678 sq. ft	No
6	Primary Bedroom	16'4" x 25'6"	313 sq. ft	Yes
7	Primary Bath	12'2" x 12'2"	125 sq. ft	Yes
8	Living Room	20'4" x 21'7"	448 sq. ft	Yes
9	Laundry	12'1" x 6'2"	74 sq. ft	Yes
10	WC	7'7" x 3'4"	25 sq. ft	Yes
11	Kitchen	11'8" x 13'4"	156 sq. ft	Yes

**5880 Silverado Place, Paso Robles, San Luis Obispo  
County, California, United States, 93446**

#		Dimensions	sqft	Counted as living area
12	Hall	16'10" x 19'4"	154 sq. ft	Yes
13	Bedroom	12'1" x 14'6"	154 sq. ft	Yes
14	Bedroom	12'0" x 12'2"	146 sq. ft	Yes
15	Dining Area	12'10" x 13'9"	176 sq. ft	Yes

# 5880 Silverado Place, Paso Robles, San Luis Obispo County, California, United States, 93446

## 1 Floor 1 - Breakfast Nook



Dimensions: 9'11" x 7'5"  
Area: 74 sq. ft  
Counted as living area: Yes

Heated: Yes  
Finished: Yes  
Enclosed: Yes  
Contiguous: Yes  
Permitted: Yes  
Wet space: No  
Addition: No  
Conversion: No

## 2 Floor 1 - Bedroom



Dimensions: 12'2" x 13'0"  
Area: 146 sq. ft  
Counted as living area: Yes

Heated: Yes  
Finished: Yes  
Enclosed: Yes  
Contiguous: Yes  
Permitted: Yes  
Wet space: No  
Addition: No  
Conversion: No

# 5880 Silverado Place, Paso Robles, San Luis Obispo County, California, United States, 93446

## 3 Floor 1 - W.I.C.



Dimensions: 12'0" x 8'0"  
Area: 96 sq. ft  
Counted as living area: Yes

Heated: Yes  
Finished: Yes  
Enclosed: Yes  
Contiguous: Yes  
Permitted: Yes  
Wet space: No  
Addition: No  
Conversion: No

## 4 Floor 1 - Bath



Dimensions: 8'4" x 6'0"  
Area: 50 sq. ft  
Counted as living area: Yes

Heated: Yes  
Finished: Yes  
Enclosed: Yes  
Contiguous: Yes  
Permitted: Yes  
Wet space: Yes  
Addition: No  
Conversion: No

## 5 Floor 1 - Garage



Dimensions: 22'9" x 32'6"  
Area: 678 sq. ft  
Counted as living area: No

Heated: No  
Finished: Yes  
Enclosed: Yes  
Contiguous: Yes  
Permitted: Yes  
Wet space: No  
Addition: No  
Conversion: No

# 5880 Silverado Place, Paso Robles, San Luis Obispo County, California, United States, 93446

## 6 Floor 1 - Primary Bedroom



Dimensions: 16'4" x 25'6"  
Area: 313 sq. ft  
Counted as living area: Yes

Heated: Yes  
Finished: Yes  
Enclosed: Yes  
Contiguous: Yes  
Permitted: Yes  
Wet space: No  
Addition: No  
Conversion: No

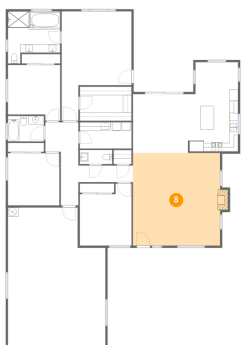
## 7 Floor 1 - Primary Bath



Dimensions: 12'2" x 12'2"  
Area: 125 sq. ft  
Counted as living area: Yes

Heated: Yes  
Finished: Yes  
Enclosed: Yes  
Contiguous: Yes  
Permitted: Yes  
Wet space: Yes  
Addition: No  
Conversion: No

## 8 Floor 1 - Living Room



Dimensions: 20'4" x 21'7"  
Area: 448 sq. ft  
Counted as living area: Yes

Heated: Yes  
Finished: Yes  
Enclosed: Yes  
Contiguous: Yes  
Permitted: Yes  
Wet space: No  
Addition: No  
Conversion: No

# 5880 Silverado Place, Paso Robles, San Luis Obispo County, California, United States, 93446

## 9 Floor 1 - Laundry



Dimensions: 12'1" x 6'2"  
Area: 74 sq. ft  
Counted as living area: Yes

Heated: Yes  
Finished: Yes  
Enclosed: Yes  
Contiguous: Yes  
Permitted: Yes  
Wet space: No  
Addition: No  
Conversion: No

## 10 Floor 1 - WC



Dimensions: 7'7" x 3'4"  
Area: 25 sq. ft  
Counted as living area: Yes

Heated: Yes  
Finished: Yes  
Enclosed: Yes  
Contiguous: Yes  
Permitted: Yes  
Wet space: Yes  
Addition: No  
Conversion: No

## 11 Floor 1 - Kitchen



Dimensions: 11'8" x 13'4"  
Area: 156 sq. ft  
Counted as living area: Yes

Heated: Yes  
Finished: Yes  
Enclosed: Yes  
Contiguous: Yes  
Permitted: Yes  
Wet space: No  
Addition: No  
Conversion: No

# 5880 Silverado Place, Paso Robles, San Luis Obispo County, California, United States, 93446

## 12 Floor 1 - Hall



Dimensions: 16'10" x 19'4"  
Area: 154 sq. ft  
Counted as living area: Yes

Heated: Yes  
Finished: Yes  
Enclosed: Yes  
Contiguous: Yes  
Permitted: Yes  
Wet space: No  
Addition: No  
Conversion: No

## 13 Floor 1 - Bedroom



Dimensions: 12'1" x 14'6"  
Area: 154 sq. ft  
Counted as living area: Yes

Heated: Yes  
Finished: Yes  
Enclosed: Yes  
Contiguous: Yes  
Permitted: Yes  
Wet space: No  
Addition: No  
Conversion: No

## 14 Floor 1 - Bedroom



Dimensions: 12'0" x 12'2"  
Area: 146 sq. ft  
Counted as living area: Yes

Heated: Yes  
Finished: Yes  
Enclosed: Yes  
Contiguous: Yes  
Permitted: Yes  
Wet space: No  
Addition: No  
Conversion: No



**5880 Silverado Place, Paso Robles, San Luis Obispo  
County, California, United States, 93446**

**15 Floor 1 - Dining Area**



**Dimensions: 12'10" x 13'9"**  
**Area: 176 sq. ft**  
**Counted as living area: Yes**

**Heated: Yes**  
**Finished: Yes**  
**Enclosed: Yes**  
**Contiguous: Yes**  
**Permitted: Yes**  
**Wet space: No**  
**Addition: No**  
**Conversion: No**