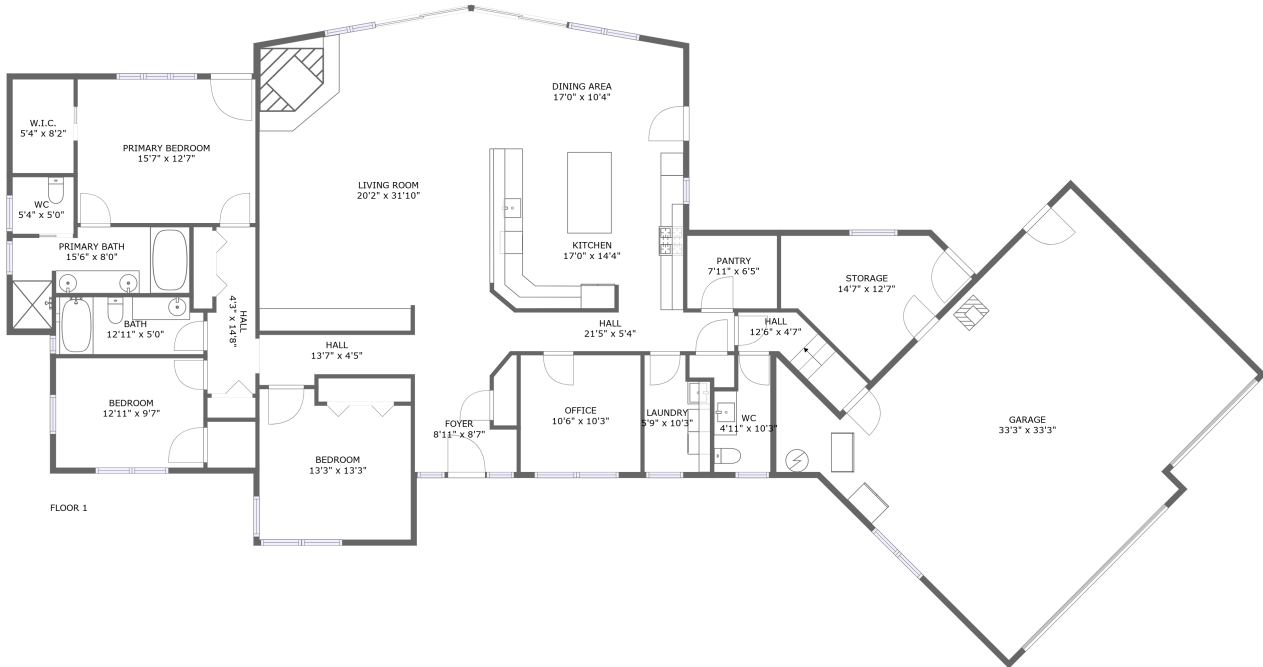


31097 Woodridge Drive, Shingletown, Shasta County, California, United States, 96088



Property Summary



1 floors



3 bedrooms



2 bathrooms



3,575 total sqft



1 garages



2,526 Gross Living Area sqft

31097 Woodridge Drive, Shingletown, Shasta County, California, United States, 96088



Room Dimensions

Floor 1

Total sqft: 3575

Living area: 2526

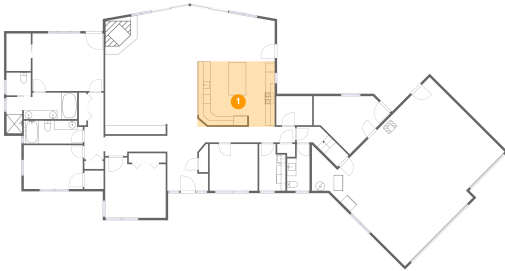
#	Room name	Dimensions	Area (sqft)	Counted as Living Area
1	Kitchen	17'0" x 14'4"	243 sq. ft	Yes
2	Storage	14'7" x 12'7"	137 sq. ft	No
3	Laundry	5'9" x 10'3"	54 sq. ft	Yes
4	Garage	33'3" x 33'3"	848 sq. ft	No
5	Office	10'6" x 10'3"	108 sq. ft	Yes
6	Foyer	8'11" x 8'7"	65 sq. ft	Yes
7	Hall	4'3" x 14'8"	56 sq. ft	Yes
8	Bath	12'11" x 5'0"	63 sq. ft	Yes
9	W.i.c.	5'4" x 8'2"	44 sq. ft	Yes
10	Living Room	20'2" x 31'10"	561 sq. ft	Yes
11	Bedroom	12'11" x 9'7"	124 sq. ft	Yes

**31097 Woodridge Drive, Shingletown, Shasta
County, California, United States, 96088**

#	Room name	Dimensions	Area (sqft)	Counted as Living Area
12	Bedroom	13'3" x 13'3"	163 sq. ft	Yes
13	Pantry	7'11" x 6'5"	50 sq. ft	Yes
14	Hall	13'7" x 4'5"	52 sq. ft	Yes
15	Wc	5'4" x 5'0"	27 sq. ft	Yes
16	Hall	12'6" x 4'7"	44 sq. ft	Yes
17	Wc	4'11" x 10'3"	44 sq. ft	Yes
18	Primary Bath	15'6" x 8'0"	95 sq. ft	Yes
19	Hall	21'5" x 5'4"	75 sq. ft	Yes
20	Dining Area	17'0" x 10'4"	175 sq. ft	Yes
21	Primary Bedroom	15'7" x 12'7"	197 sq. ft	Yes

31097 Woodridge Drive, Shingletown, Shasta County, California, United States, 96088

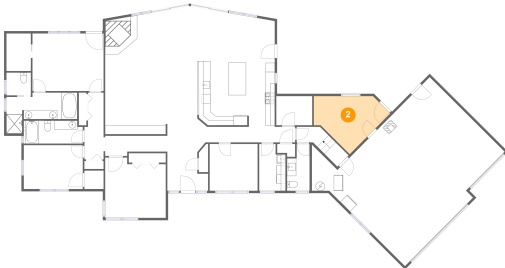
1 Floor 1 - Kitchen



Dimensions: 17'0" x 14'4"
Area: 243 sq. ft
Counted as Living Area:
Yes

Heated: Yes
Finished: Yes
Enclosed: Yes
Contiguous:
Yes
Permitted: Yes
Wet Space: No
Addition: No
Conversion: No

2 Floor 1 - Storage

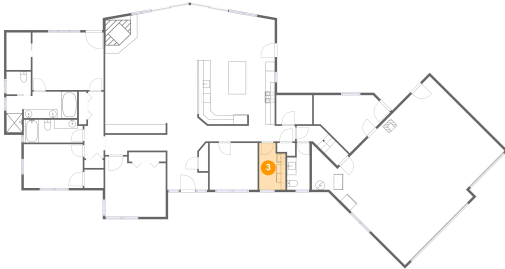


Dimensions: 14'7" x 12'7"
Area: 137 sq. ft
Counted as Living Area: No

Heated: No
Finished: No
Enclosed: No
Contiguous: Yes
Permitted: Yes
Wet Space: No
Addition: No
Conversion: No

31097 Woodridge Drive, Shingletown, Shasta County, California, United States, 96088

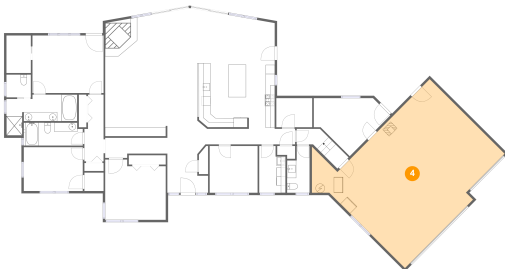
3 Floor 1 - Laundry



Dimensions: 5'9" x 10'3"
Area: 54 sq. ft
Counted as Living Area:
Yes

Heated: Yes
Finished: Yes
Enclosed: Yes
Contiguous:
Yes
Permitted: Yes
Wet Space: No
Addition: No
Conversion: No

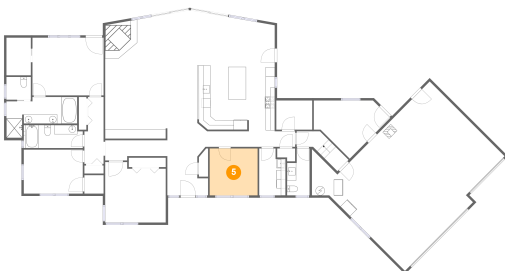
4 Floor 1 - Garage



Dimensions: 33'3" x 33'3"
Area: 848 sq. ft
Counted as Living Area: No

Heated: No
Finished: No
Enclosed: Yes
Contiguous: Yes
Permitted: Yes
Wet Space: No
Addition: No
Conversion: No

5 Floor 1 - Office

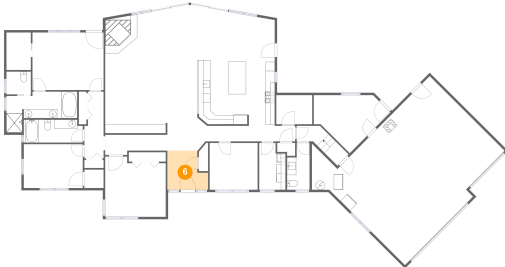


Dimensions: 10'6" x 10'3"
Area: 108 sq. ft
Counted as Living Area:
Yes

Heated: Yes
Finished: Yes
Enclosed: Yes
Contiguous:
Yes
Permitted: Yes
Wet Space: No
Addition: No
Conversion: No

31097 Woodridge Drive, Shingletown, Shasta County, California, United States, 96088

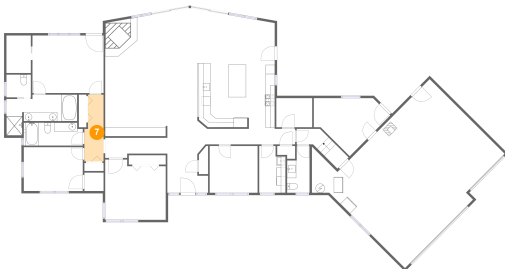
6 Floor 1 - Foyer



Dimensions: 8'11" x 8'7"
Area: 65 sq. ft
Counted as Living Area:
Yes

Heated: Yes
Finished: Yes
Enclosed: Yes
Contiguous:
Yes
Permitted: Yes
Wet Space: No
Addition: No
Conversion: No

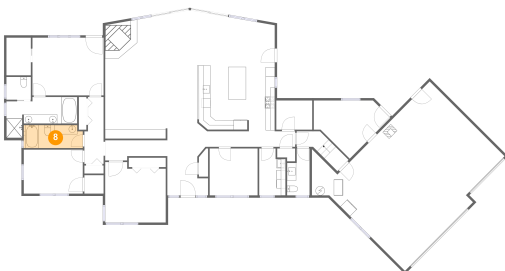
7 Floor 1 - Hall



Dimensions: 4'3" x 14'8"
Area: 56 sq. ft
Counted as Living Area:
Yes

Heated: Yes
Finished: Yes
Enclosed: Yes
Contiguous:
Yes
Permitted: Yes
Wet Space: No
Addition: No
Conversion: No

8 Floor 1 - Bath

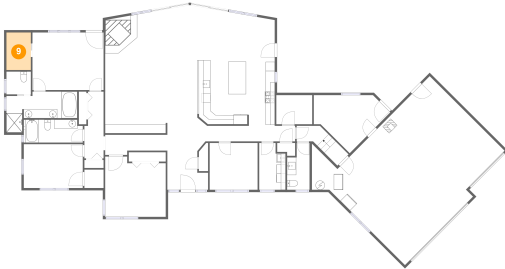


Dimensions: 12'11" x 5'0"
Area: 63 sq. ft
Counted as Living Area:
Yes

Heated: Yes
Finished: Yes
Enclosed: Yes
Contiguous:
Yes
Permitted: Yes
Wet Space: Yes
Addition: No
Conversion: No

31097 Woodridge Drive, Shingletown, Shasta County, California, United States, 96088

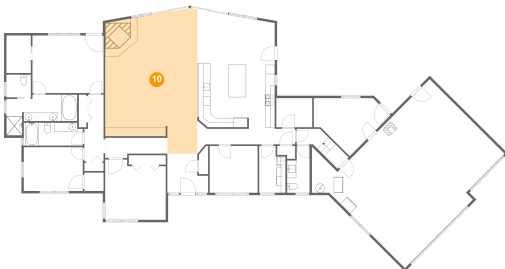
9 Floor 1 - W.i.c.



Dimensions: 5'4" x 8'2"
Area: 44 sq. ft
Counted as Living Area:
Yes

Heated: Yes
Finished: Yes
Enclosed: Yes
Contiguous:
Yes
Permitted: Yes
Wet Space: No
Addition: No
Conversion: No

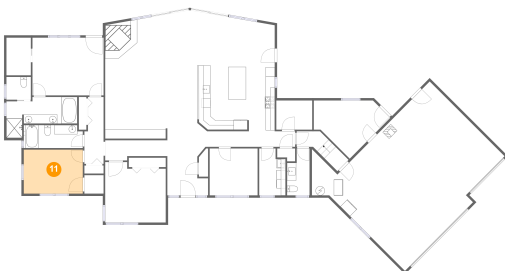
10 Floor 1 - Living Room



Dimensions: 20'2" x 31'10"
Area: 561 sq. ft
Counted as Living Area:
Yes

Heated: Yes
Finished: Yes
Enclosed: Yes
Contiguous:
Yes
Permitted: Yes
Wet Space: No
Addition: No
Conversion: No

11 Floor 1 - Bedroom

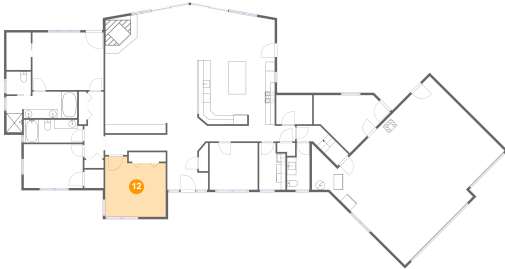


Dimensions: 12'11" x 9'7"
Area: 124 sq. ft
Counted as Living Area:
Yes

Heated: Yes
Finished: Yes
Enclosed: Yes
Contiguous:
Yes
Permitted: Yes
Wet Space: No
Addition: No
Conversion: No

31097 Woodridge Drive, Shingletown, Shasta County, California, United States, 96088

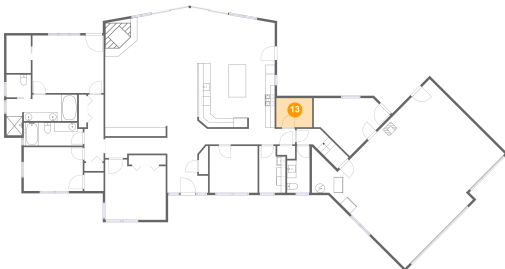
12 Floor 1 - Bedroom



Dimensions: 13'3" x 13'3"
Area: 163 sq. ft
Counted as Living Area:
Yes

Heated: Yes
Finished: Yes
Enclosed: Yes
Contiguous:
Yes
Permitted: Yes
Wet Space: No
Addition: No
Conversion: No

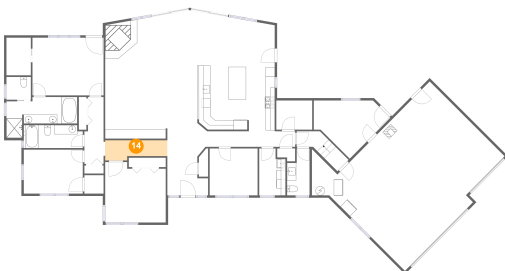
13 Floor 1 - Pantry



Dimensions: 7'11" x 6'5"
Area: 50 sq. ft
Counted as Living Area:
Yes

Heated: Yes
Finished: Yes
Enclosed: Yes
Contiguous:
Yes
Permitted: Yes
Wet Space: No
Addition: No
Conversion: No

14 Floor 1 - Hall

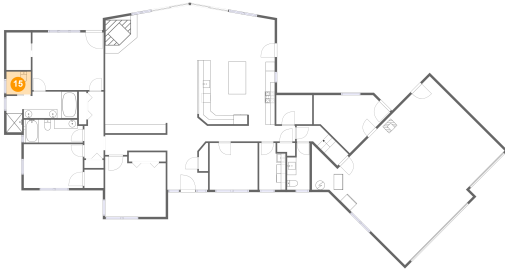


Dimensions: 13'7" x 4'5"
Area: 52 sq. ft
Counted as Living Area:
Yes

Heated: Yes
Finished: Yes
Enclosed: Yes
Contiguous:
Yes
Permitted: Yes
Wet Space: No
Addition: No
Conversion: No

31097 Woodridge Drive, Shingletown, Shasta County, California, United States, 96088

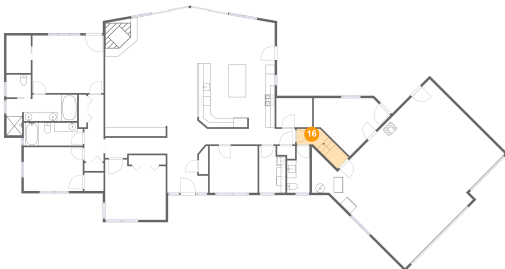
15 Floor 1 - Wc



Dimensions: 5'4" x 5'0"
Area: 27 sq. ft
Counted as Living Area:
Yes

Heated: Yes
Finished: Yes
Enclosed: Yes
Contiguous:
Yes
Permitted: Yes
Wet Space: Yes
Addition: No
Conversion: No

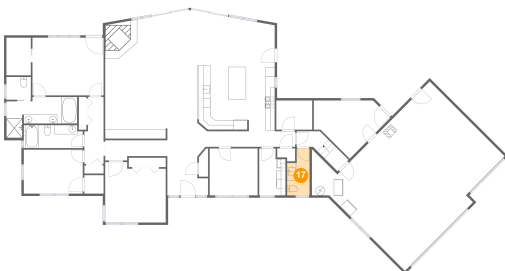
16 Floor 1 - Hall



Dimensions: 12'6" x 4'7"
Area: 44 sq. ft
Counted as Living Area:
Yes

Heated: Yes
Finished: Yes
Enclosed: Yes
Contiguous:
Yes
Permitted: Yes
Wet Space: No
Addition: No
Conversion: No

17 Floor 1 - Wc

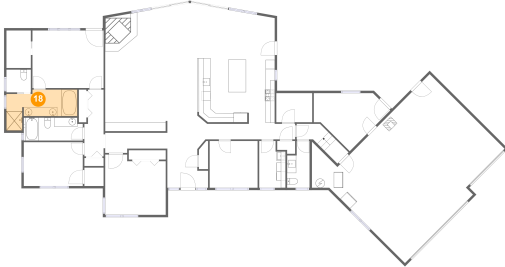


Dimensions: 4'11" x 10'3"
Area: 44 sq. ft
Counted as Living Area:
Yes

Heated: Yes
Finished: Yes
Enclosed: Yes
Contiguous:
Yes
Permitted: Yes
Wet Space: Yes
Addition: No
Conversion: No

31097 Woodridge Drive, Shingletown, Shasta County, California, United States, 96088

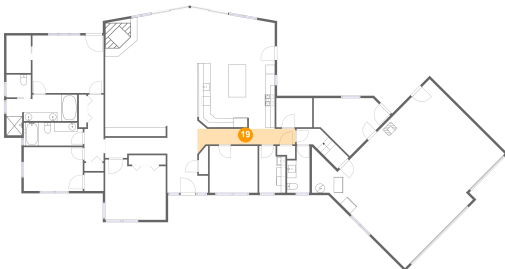
18 Floor 1 - Primary Bath



Dimensions: 15'6" x 8'0"
Area: 95 sq. ft
Counted as Living Area:
Yes

Heated: Yes
Finished: Yes
Enclosed: Yes
Contiguous:
Yes
Permitted: Yes
Wet Space: Yes
Addition: No
Conversion: No

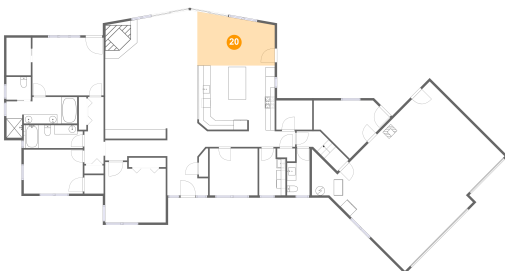
19 Floor 1 - Hall



Dimensions: 21'5" x 5'4"
Area: 75 sq. ft
Counted as Living Area:
Yes

Heated: Yes
Finished: Yes
Enclosed: Yes
Contiguous:
Yes
Permitted: Yes
Wet Space: No
Addition: No
Conversion: No

20 Floor 1 - Dining Area

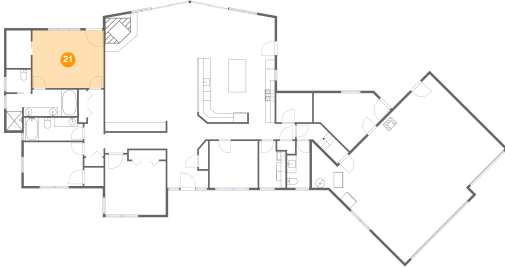


Dimensions: 17'0" x 10'4"
Area: 175 sq. ft
Counted as Living Area:
Yes

Heated: Yes
Finished: Yes
Enclosed: Yes
Contiguous:
Yes
Permitted: Yes
Wet Space: No
Addition: No
Conversion: No

31097 Woodridge Drive, Shingletown, Shasta County, California, United States, 96088

21 Floor 1 - Primary Bedroom



Dimensions: 15'7" x 12'7"
Area: 197 sq. ft
Counted as Living Area:
Yes

Heated: Yes
Finished: Yes
Enclosed: Yes
Contiguous:
Yes
Permitted: Yes
Wet Space: No
Addition: No
Conversion: No