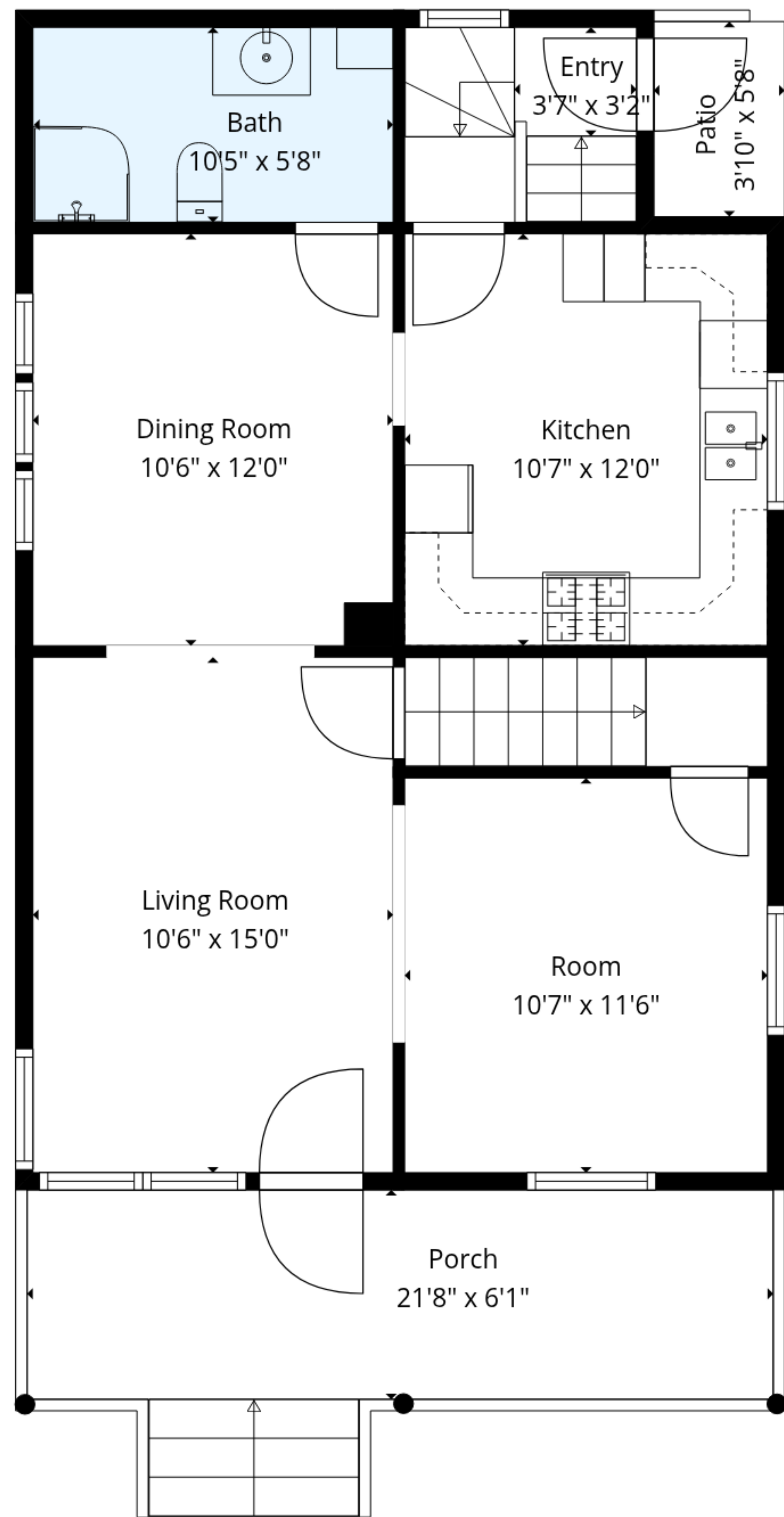
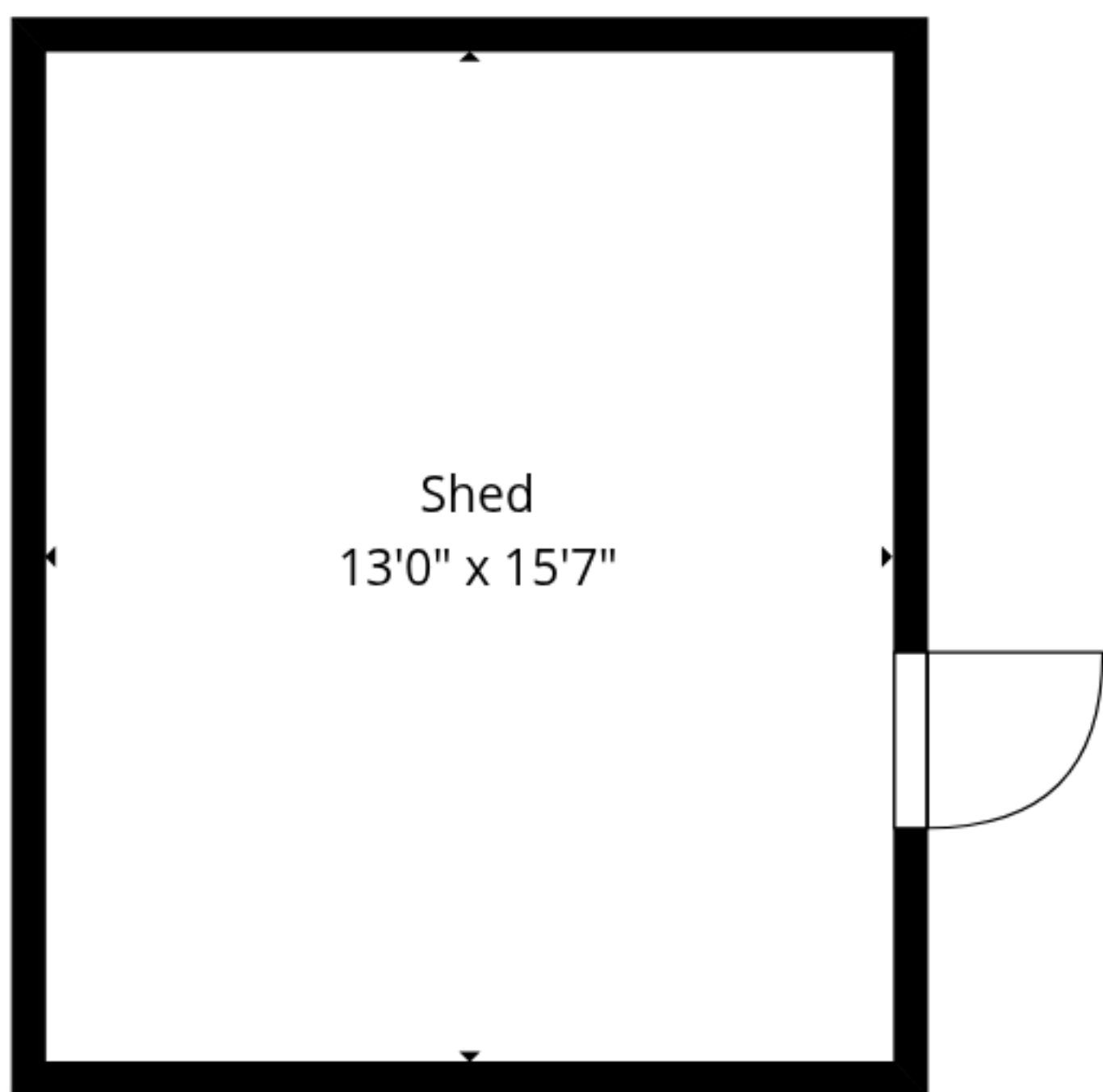


Basement  
18'1" x 33'3"

**TOTAL: 1283 sq. ft**

BELOW GRADE: 12 sq. ft, 1st floor: 688 sq. ft, 2nd floor: 583 sq. ft

EXCLUDED AREAS: BASEMENT: 645 sq. ft, SHED: 203 sq. ft, PORCH: 153 sq. ft,  
PATIO: 22 sq. ft, WALLS: 190 sq. ft



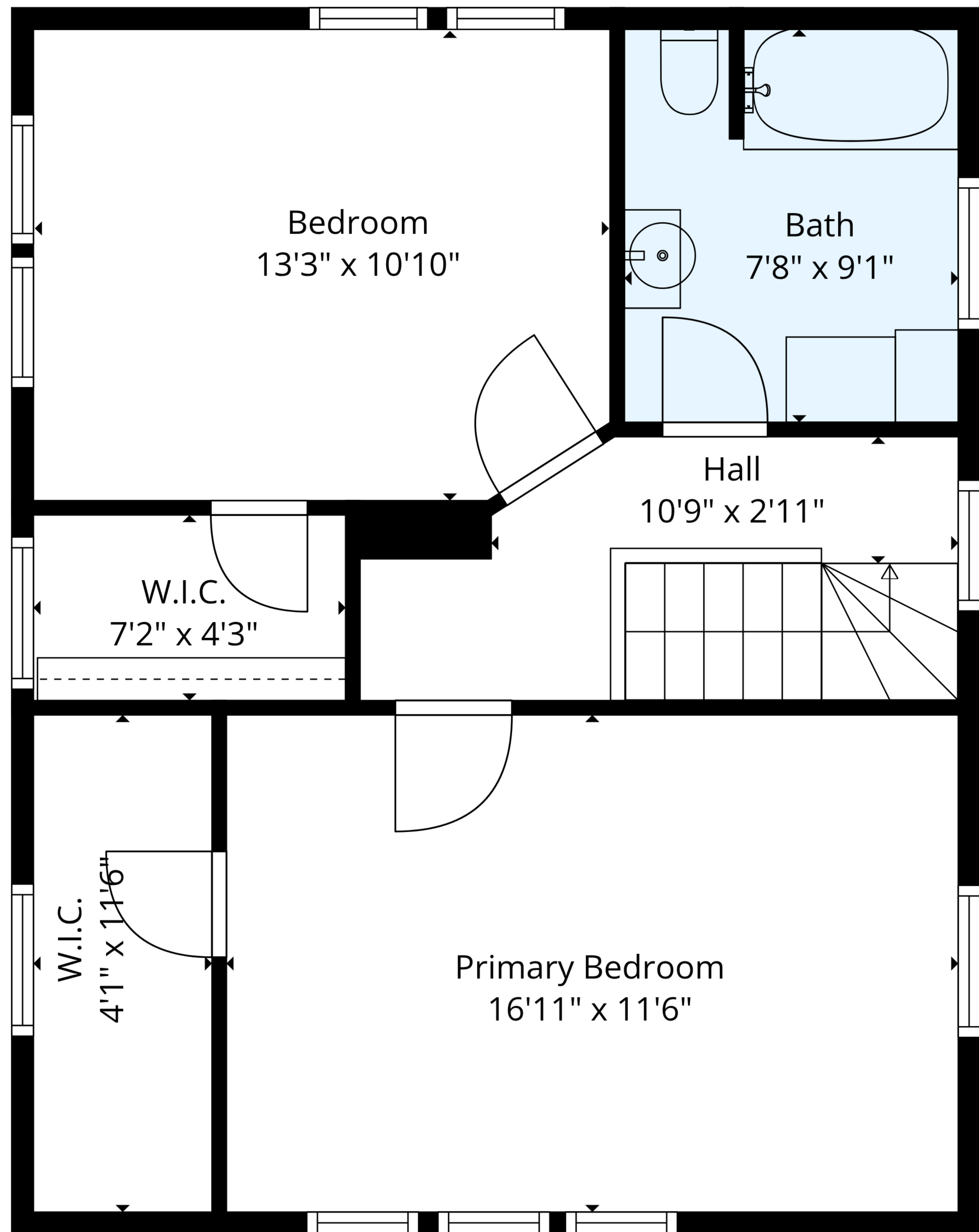
**TOTAL: 1283 sq. ft**

BELOW GRADE: 12 sq. ft, 1st floor: 688 sq. ft, 2nd floor: 583 sq. ft

EXCLUDED AREAS: BASEMENT: 645 sq. ft, SHED: 203 sq. ft, PORCH: 153 sq. ft,  
PATIO: 22 sq. ft, WALLS: 190 sq. ft



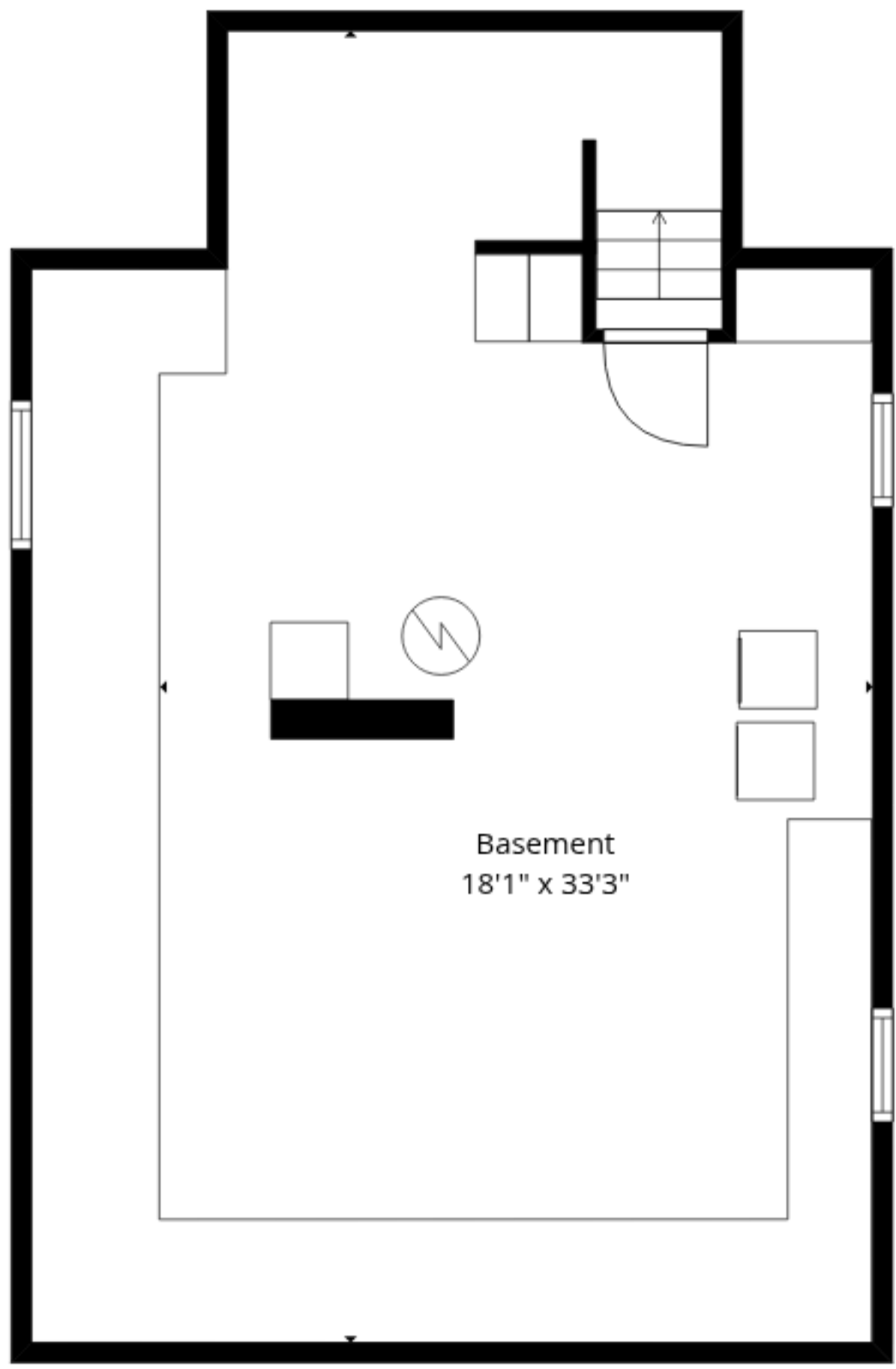
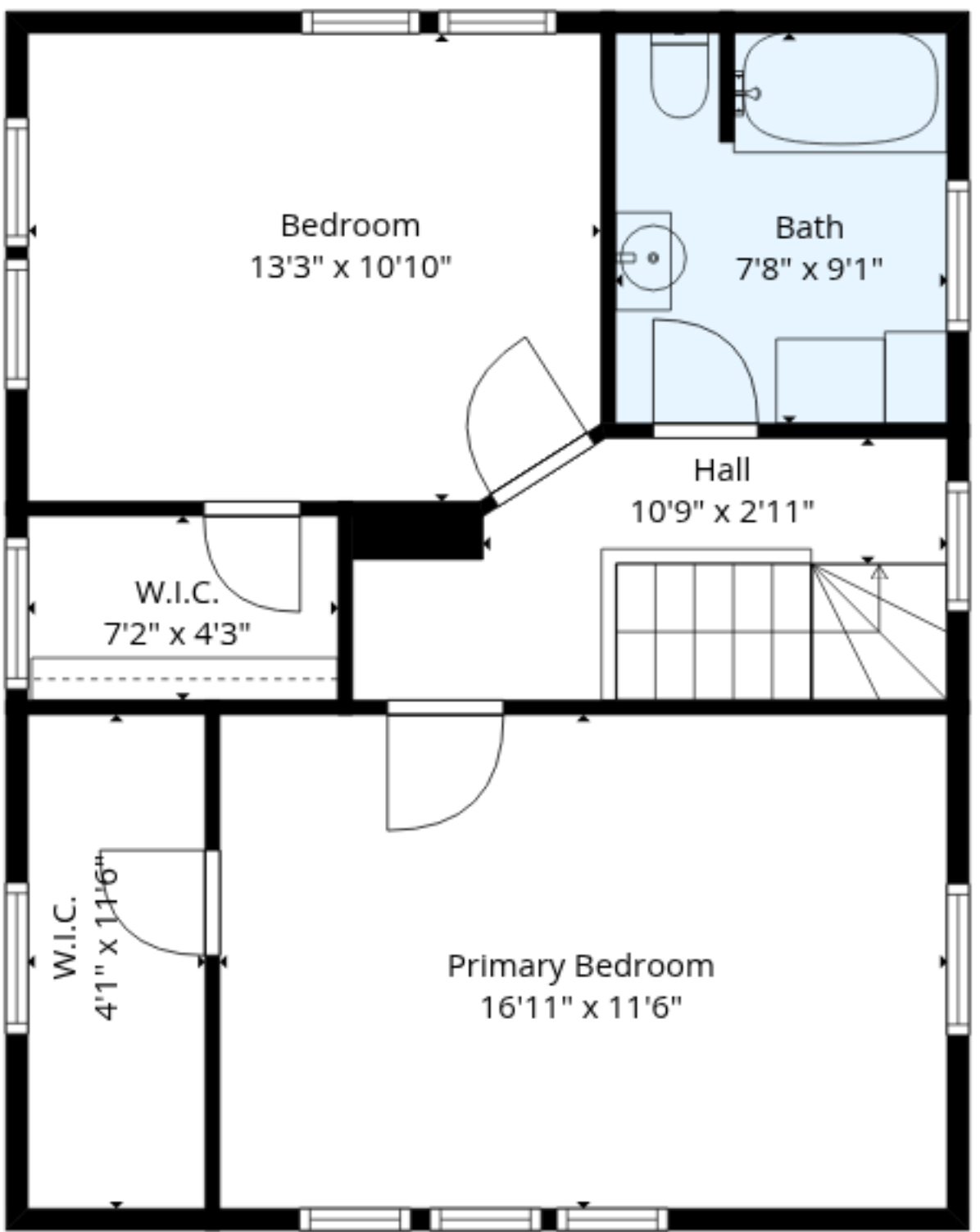
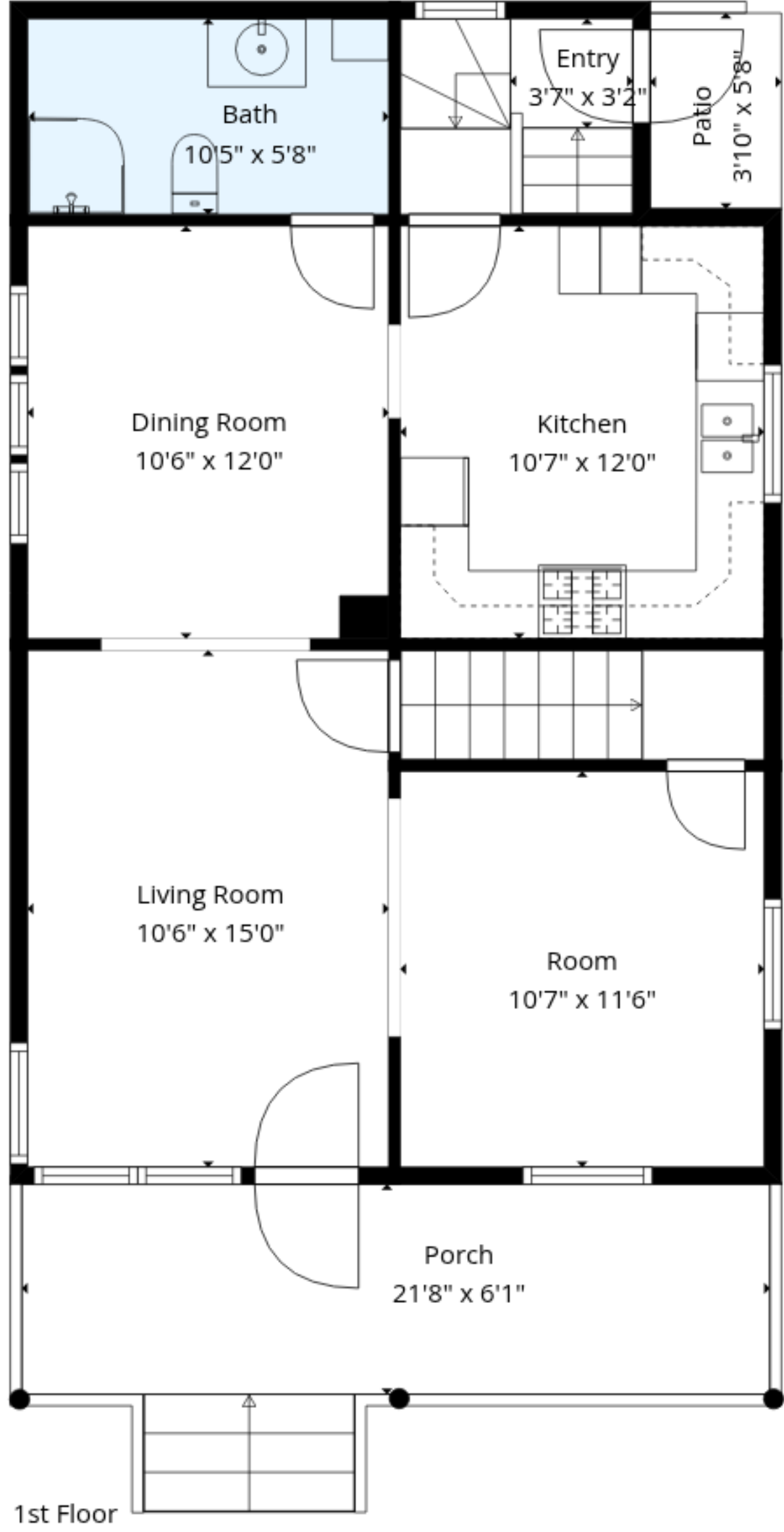
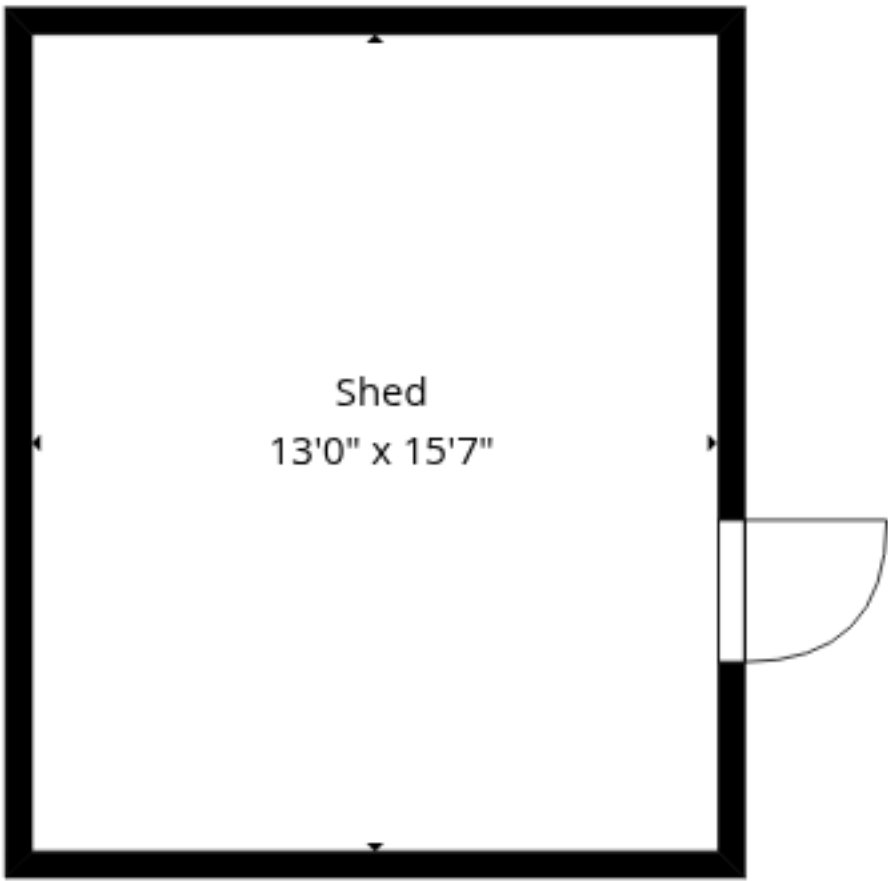




**TOTAL: 1283 sq. ft**

BELOW GRADE: 12 sq. ft, 1st floor: 688 sq. ft, 2nd floor: 583 sq. ft

EXCLUDED AREAS: BASEMENT: 645 sq. ft, SHED: 203 sq. ft, PORCH: 153 sq. ft,  
PATIO: 22 sq. ft, WALLS: 190 sq. ft



**TOTAL: 1283 sq. ft**  
BELOW GRADE: 12 sq. ft, 1st floor: 688 sq. ft, 2nd floor: 583 sq. ft  
EXCLUDED AREAS: BASEMENT: 645 sq. ft, SHED: 203 sq. ft, PORCH: 153 sq. ft,  
PATIO: 22 sq. ft, WALLS: 190 sq. ft

