


# Home report

## 1230 Coronado Drive, Salem, Roanoke County, Virginia, United States, 24153




### Property summary

 **1** Garages

 **4** Bedrooms

 **4** Bathrooms

 **1** Half baths

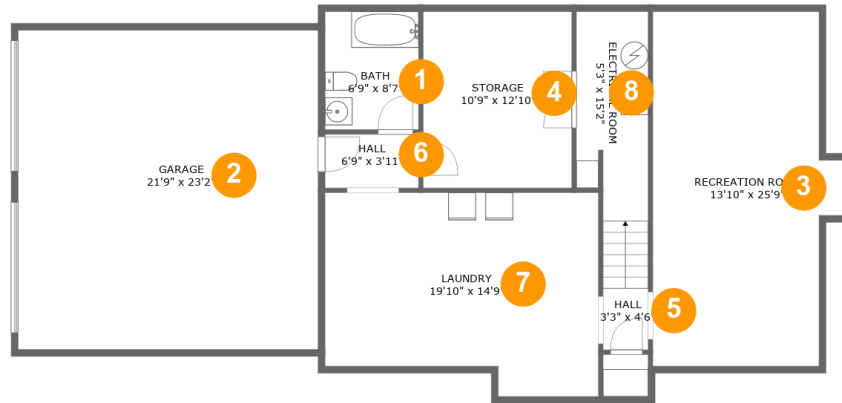
 **3** Floors

 **3,350** Gross living area sqft

 **4,688** Total sqft

## Home report

1230 Coronado Drive, Salem, Roanoke County, Virginia, United States, 24153



## Room dimensions

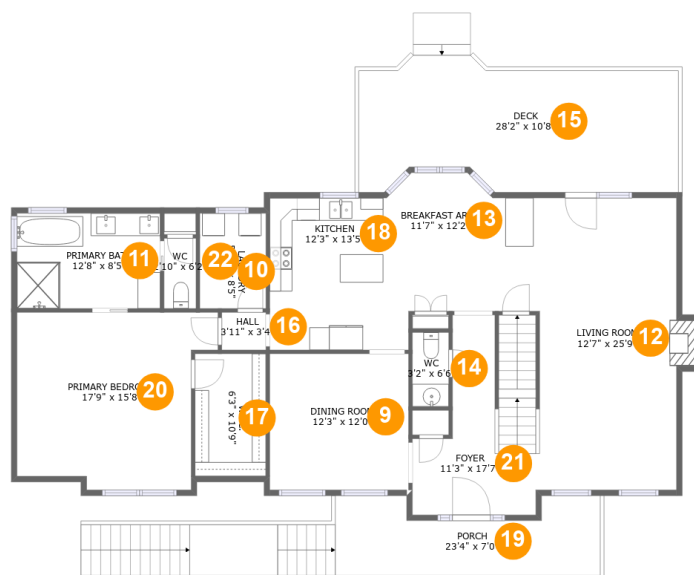
Floor 1

Total sqft: 1558 Living area: 795

| # |                 | Dimensions     | sqft       | Counted as living area |
|---|-----------------|----------------|------------|------------------------|
| 1 | Bath            | 6'9" x 8'7"    | 58 sq. ft  | Yes                    |
| 2 | Garage          | 21'9" x 23'2"  | 504 sq. ft | No                     |
| 3 | Recreation Room | 13'10" x 25'9" | 318 sq. ft | Yes                    |
| 4 | Storage         | 10'9" x 12'10" | 138 sq. ft | No                     |
| 5 | Hall            | 3'3" x 4'6"    | 31 sq. ft  | Yes                    |
| 6 | Hall            | 6'9" x 3'11"   | 26 sq. ft  | Yes                    |
| 7 | Laundry         | 19'10" x 14'9" | 266 sq. ft | Yes                    |
| 8 | Electrical Room | 5'3" x 15'2"   | 74 sq. ft  | No                     |

# Home report

1230 Coronado Drive, Salem, Roanoke County, Virginia, United States, 24153



## Room dimensions

Floor 2

Total sqft: 2119 Living area: 1578

| #  |                | Dimensions    | sqft       | Counted as living area |
|----|----------------|---------------|------------|------------------------|
| 9  | Dining Room    | 12'3" x 12'0" | 147 sq. ft | Yes                    |
| 10 | Laundry        | 5'10" x 8'5"  | 49 sq. ft  | Yes                    |
| 11 | Primary Bath   | 12'8" x 8'5"  | 106 sq. ft | Yes                    |
| 12 | Living Room    | 12'7" x 25'9" | 320 sq. ft | Yes                    |
| 13 | Breakfast Area | 11'7" x 12'2" | 127 sq. ft | Yes                    |
| 14 | WC             | 3'2" x 6'6"   | 21 sq. ft  | Yes                    |
| 15 | Deck           | 28'2" x 10'8" | 294 sq. ft | No                     |
| 16 | Hall           | 3'11" x 3'4"  | 13 sq. ft  | Yes                    |
| 17 | W.I.C.         | 6'3" x 10'9"  | 67 sq. ft  | Yes                    |
| 18 | Kitchen        | 12'3" x 13'5" | 166 sq. ft | Yes                    |
| 19 | Porch          | 23'4" x 7'0"  | 238 sq. ft | No                     |

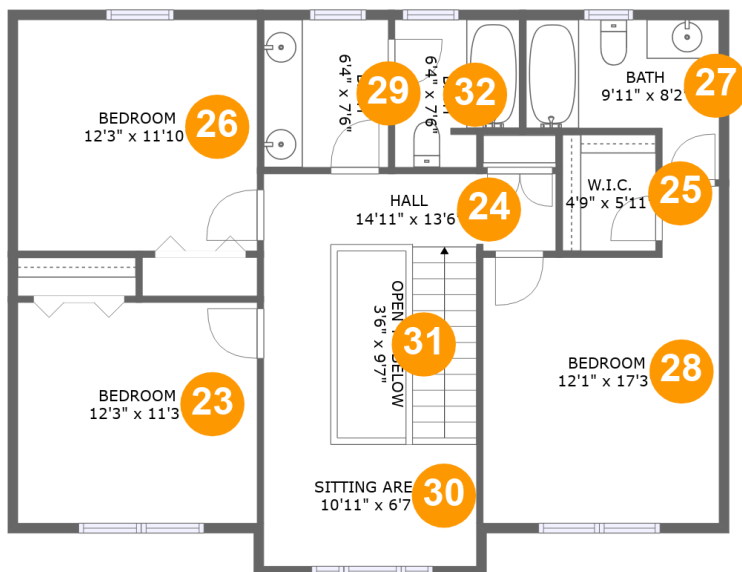
Home report

**1230 Coronado Drive, Salem, Roanoke County, Virginia, United States, 24153**

| #  |                 | Dimensions    | sqft       | Counted as living area |
|----|-----------------|---------------|------------|------------------------|
| 20 | Primary Bedroom | 17'9" x 15'8" | 241 sq. ft | Yes                    |
| 21 | Foyer           | 11'3" x 17'7" | 153 sq. ft | Yes                    |
| 22 | WC              | 2'10" x 6'2"  | 17 sq. ft  | Yes                    |

Home report

1230 Coronado Drive, Salem, Roanoke County, Virginia, United States, 24153



## Room dimensions

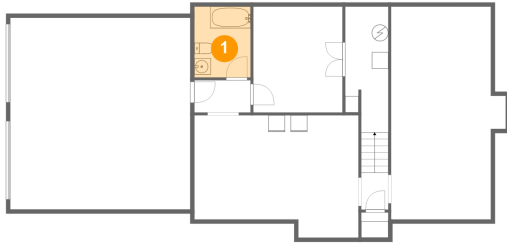
Floor 3

Total sqft: 1011

Living area: 977

| #  |               | Dimensions     | sqft       | Counted as living area |
|----|---------------|----------------|------------|------------------------|
| 23 | Bedroom       | 12'3" x 11'3"  | 138 sq. ft | Yes                    |
| 24 | Hall          | 14'11" x 13'6" | 129 sq. ft | Yes                    |
| 25 | W.I.C.        | 4'9" x 5'11"   | 28 sq. ft  | Yes                    |
| 26 | Bedroom       | 12'3" x 11'10" | 145 sq. ft | Yes                    |
| 27 | Bath          | 9'11" x 8'2"   | 62 sq. ft  | Yes                    |
| 28 | Bedroom       | 12'1" x 17'3"  | 174 sq. ft | Yes                    |
| 29 | Bath          | 6'4" x 7'6"    | 48 sq. ft  | Yes                    |
| 30 | Sitting Area  | 10'11" x 6'7"  | 71 sq. ft  | Yes                    |
| 31 | Open To Below | 3'6" x 9'7"    | 34 sq. ft  | No                     |
| 32 | Bath          | 6'4" x 7'6"    | 43 sq. ft  | Yes                    |

## 1 Floor 1 - Bath



Dimensions: 6'9" x 8'7"  
Area: 58 sq. ft  
Counted as living area: Yes

Heated: Yes  
Finished: Yes  
Enclosed: Yes  
Contiguous: Yes  
Permitted: Yes  
Wet space: Yes  
Addition: No  
Conversion: No

## 2 Floor 1 - Garage



Dimensions: 21'9" x 23'2"  
Area: 504 sq. ft  
Counted as living area: No

Heated: No  
Finished: No  
Enclosed: Yes  
Contiguous: Yes  
Permitted: Yes  
Wet space: No  
Addition: No  
Conversion: No

1230 Coronado Drive, Salem, Roanoke County, Virginia, United States, 24153

### 3 Floor 1 - Recreation Room



Dimensions: 13'10" x 25'9"  
Area: 318 sq. ft  
Counted as living area: Yes

Heated: Yes  
Finished: Yes  
Enclosed: Yes  
Contiguous: Yes  
Permitted: Yes  
Wet space: No  
Addition: No  
Conversion: No

### 4 Floor 1 - Storage



Dimensions: 10'9" x 12'10"  
Area: 138 sq. ft  
Counted as living area: No

Heated: No  
Finished: No  
Enclosed: No  
Contiguous: Yes  
Permitted: Yes  
Wet space: No  
Addition: No  
Conversion: No

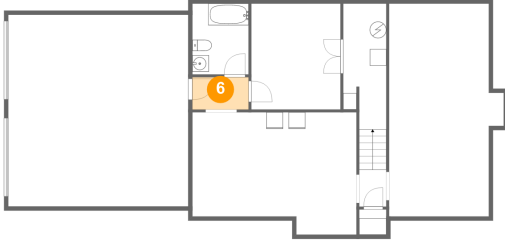
### 5 Floor 1 - Hall



Dimensions: 3'3" x 4'6"  
Area: 31 sq. ft  
Counted as living area: Yes

Heated: Yes  
Finished: Yes  
Enclosed: Yes  
Contiguous: Yes  
Permitted: Yes  
Wet space: No  
Addition: No  
Conversion: No

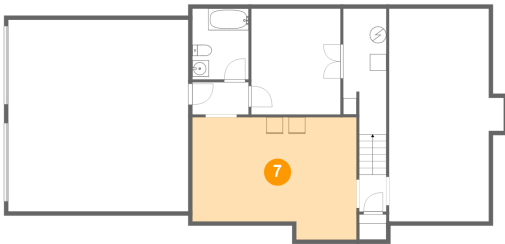
**6** Floor 1 - Hall



Dimensions: 6'9" x 3'11"  
Area: 26 sq. ft  
Counted as living area: Yes

Heated: Yes  
Finished: Yes  
Enclosed: Yes  
Contiguous: Yes  
Permitted: Yes  
Wet space: No  
Addition: No  
Conversion: No

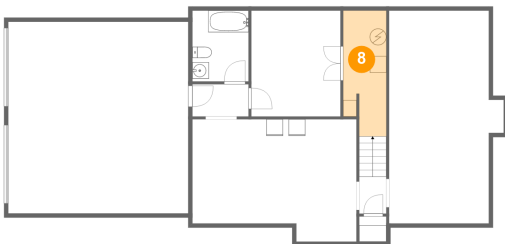
**7** Floor 1 - Laundry



Dimensions: 19'10" x 14'9"  
Area: 266 sq. ft  
Counted as living area: Yes

Heated: Yes  
Finished: Yes  
Enclosed: Yes  
Contiguous: Yes  
Permitted: Yes  
Wet space: No  
Addition: No  
Conversion: No

**8** Floor 1 - Electrical Room



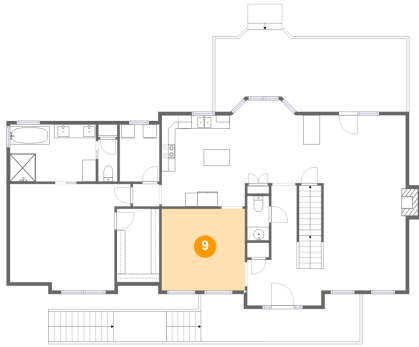
Dimensions: 5'3" x 15'2"  
Area: 74 sq. ft  
Counted as living area: No

Heated: No  
Finished: No  
Enclosed: Yes  
Contiguous: Yes  
Permitted: Yes  
Wet space: No  
Addition: No  
Conversion: No



1230 Coronado Drive, Salem, Roanoke County, Virginia, United States, 24153

### 9 Floor 2 - Dining Room



Dimensions: 12'3" x 12'0"  
Area: 147 sq. ft  
Counted as living area: Yes

Heated: Yes  
Finished: Yes  
Enclosed: Yes  
Contiguous: Yes  
Permitted: Yes  
Wet space: No  
Addition: No  
Conversion: No

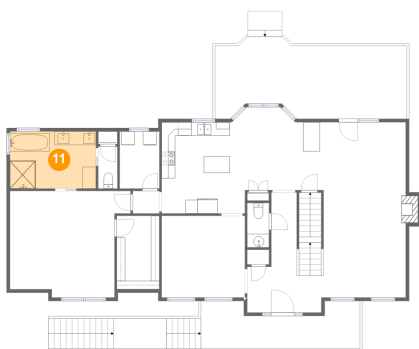
### 10 Floor 2 - Laundry



Dimensions: 5'10" x 8'5"  
Area: 49 sq. ft  
Counted as living area: Yes

Heated: Yes  
Finished: Yes  
Enclosed: Yes  
Contiguous: Yes  
Permitted: Yes  
Wet space: No  
Addition: No  
Conversion: No

### 11 Floor 2 - Primary Bath

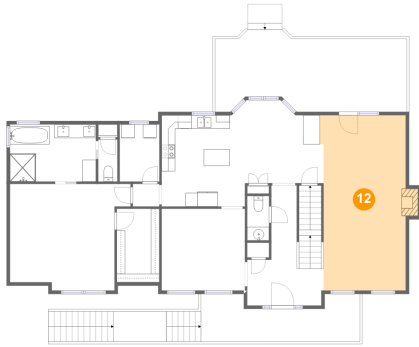


Dimensions: 12'8" x 8'5"  
Area: 106 sq. ft  
Counted as living area: Yes

Heated: Yes  
Finished: Yes  
Enclosed: Yes  
Contiguous: Yes  
Permitted: Yes  
Wet space: Yes  
Addition: No  
Conversion: No

1230 Coronado Drive, Salem, Roanoke County, Virginia, United States, 24153

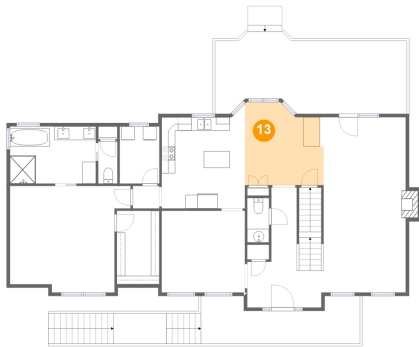
### 12 Floor 2 - Living Room



Dimensions: 12'7" x 25'9"  
Area: 320 sq. ft  
Counted as living area: Yes

Heated: Yes  
Finished: Yes  
Enclosed: Yes  
Contiguous: Yes  
Permitted: Yes  
Wet space: No  
Addition: No  
Conversion: No

### 13 Floor 2 - Breakfast Area



Dimensions: 11'7" x 12'2"  
Area: 127 sq. ft  
Counted as living area: Yes

Heated: Yes  
Finished: Yes  
Enclosed: Yes  
Contiguous: Yes  
Permitted: Yes  
Wet space: No  
Addition: No  
Conversion: No

### 14 Floor 2 - WC

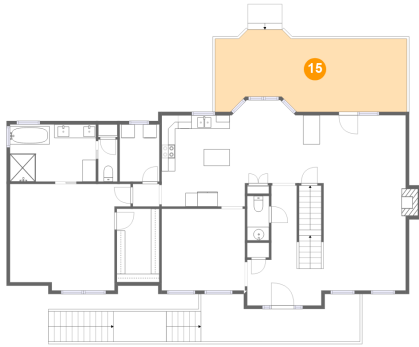


Dimensions: 3'2" x 6'6"  
Area: 21 sq. ft  
Counted as living area: Yes

Heated: Yes  
Finished: Yes  
Enclosed: Yes  
Contiguous: Yes  
Permitted: Yes  
Wet space: Yes  
Addition: No  
Conversion: No

1230 Coronado Drive, Salem, Roanoke County, Virginia, United States, 24153

**15** Floor 2 - Deck



Dimensions: 28'2" x 10'8"  
Area: 294 sq. ft  
Counted as living area: No

Heated: No  
Finished: Yes  
Enclosed: No  
Contiguous: Yes  
Permitted: Yes  
Wet space: No  
Addition: No  
Conversion: No

**16** Floor 2 - Hall



Dimensions: 3'11" x 3'4"  
Area: 13 sq. ft  
Counted as living area: Yes

Heated: Yes  
Finished: Yes  
Enclosed: Yes  
Contiguous: Yes  
Permitted: Yes  
Wet space: No  
Addition: No  
Conversion: No

**17** Floor 2 - W.I.C.

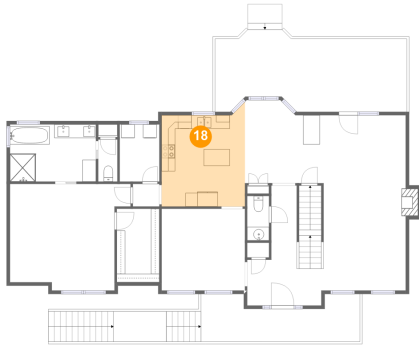


Dimensions: 6'3" x 10'9"  
Area: 67 sq. ft  
Counted as living area: Yes

Heated: Yes  
Finished: Yes  
Enclosed: Yes  
Contiguous: Yes  
Permitted: Yes  
Wet space: No  
Addition: No  
Conversion: No

1230 Coronado Drive, Salem, Roanoke County, Virginia, United States, 24153

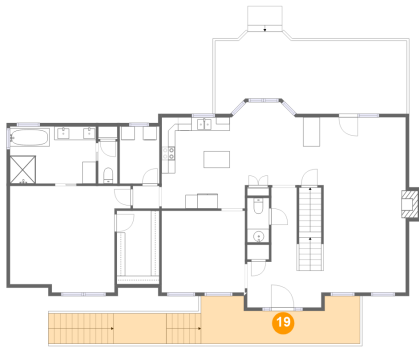
### 18 Floor 2 - Kitchen



Dimensions: 12'3" x 13'5"  
Area: 166 sq. ft  
Counted as living area: Yes

Heated: Yes  
Finished: Yes  
Enclosed: Yes  
Contiguous: Yes  
Permitted: Yes  
Wet space: No  
Addition: No  
Conversion: No

### 19 Floor 2 - Porch



Dimensions: 23'4" x 7'0"  
Area: 238 sq. ft  
Counted as living area: No

Heated: No  
Finished: Yes  
Enclosed: No  
Contiguous: Yes  
Permitted: Yes  
Wet space: No  
Addition: No  
Conversion: No

### 20 Floor 2 - Primary Bedroom

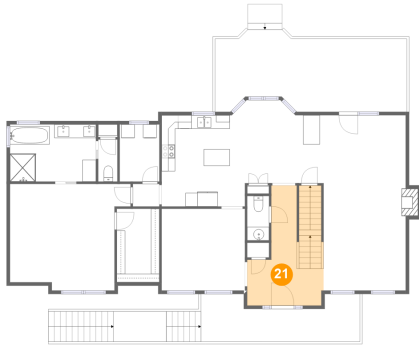


Dimensions: 17'9" x 15'8"  
Area: 241 sq. ft  
Counted as living area: Yes

Heated: Yes  
Finished: Yes  
Enclosed: Yes  
Contiguous: Yes  
Permitted: Yes  
Wet space: No  
Addition: No  
Conversion: No

1230 Coronado Drive, Salem, Roanoke County, Virginia, United States, 24153

### 21 Floor 2 - Foyer



Dimensions: 11'3" x 17'7"  
Area: 153 sq. ft  
Counted as living area: Yes

Heated: Yes  
Finished: Yes  
Enclosed: Yes  
Contiguous: Yes  
Permitted: Yes  
Wet space: No  
Addition: No  
Conversion: No

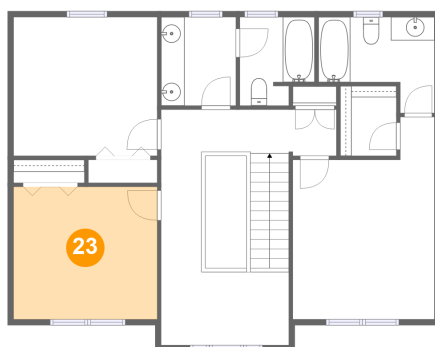
### 22 Floor 2 - WC



Dimensions: 2'10" x 6'2"  
Area: 17 sq. ft  
Counted as living area: Yes

Heated: Yes  
Finished: Yes  
Enclosed: Yes  
Contiguous: Yes  
Permitted: Yes  
Wet space: Yes  
Addition: No  
Conversion: No

### 23 Floor 3 - Bedroom

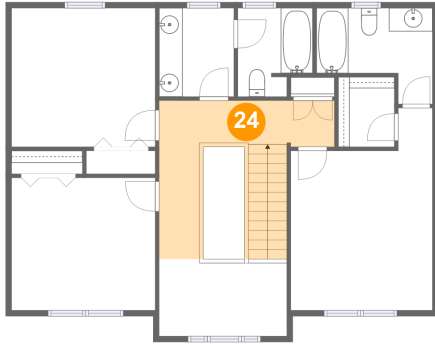


Dimensions: 12'3" x 11'3"  
Area: 138 sq. ft  
Counted as living area: Yes

Heated: Yes  
Finished: Yes  
Enclosed: Yes  
Contiguous: Yes  
Permitted: Yes  
Wet space: No  
Addition: No  
Conversion: No

1230 Coronado Drive, Salem, Roanoke County, Virginia, United States, 24153

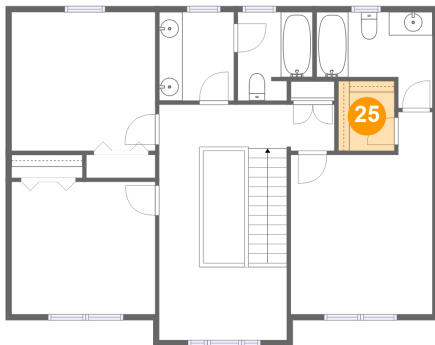
**24** Floor 3 - Hall



Dimensions: 14'11" x 13'6"  
Area: 129 sq. ft  
Counted as living area: Yes

Heated: Yes  
Finished: Yes  
Enclosed: Yes  
Contiguous: Yes  
Permitted: Yes  
Wet space: No  
Addition: No  
Conversion: No

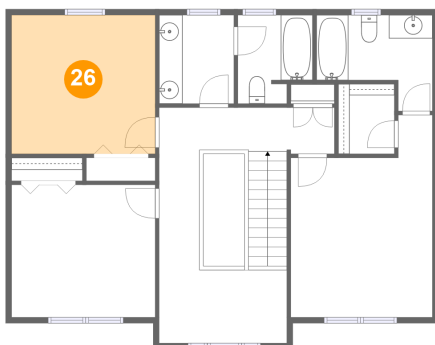
**25** Floor 3 - W.I.C.



Dimensions: 4'9" x 5'11"  
Area: 28 sq. ft  
Counted as living area: Yes

Heated: Yes  
Finished: Yes  
Enclosed: Yes  
Contiguous: Yes  
Permitted: Yes  
Wet space: No  
Addition: No  
Conversion: No

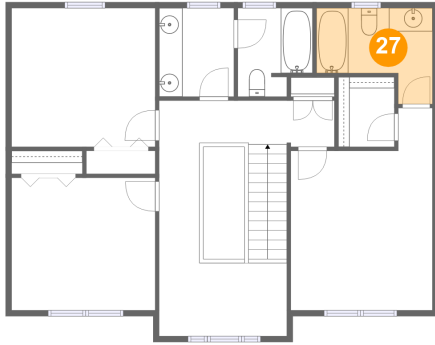
**26** Floor 3 - Bedroom



Dimensions: 12'3" x 11'10"  
Area: 145 sq. ft  
Counted as living area: Yes

Heated: Yes  
Finished: Yes  
Enclosed: Yes  
Contiguous: Yes  
Permitted: Yes  
Wet space: No  
Addition: No  
Conversion: No

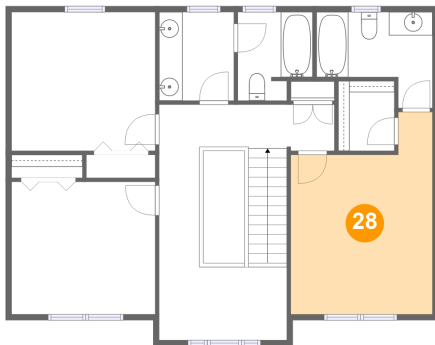
**27** Floor 3 - Bath



Dimensions: 9'11" x 8'2"  
Area: 62 sq. ft  
Counted as living area: Yes

Heated: Yes  
Finished: Yes  
Enclosed: Yes  
Contiguous: Yes  
Permitted: Yes  
Wet space: Yes  
Addition: No  
Conversion: No

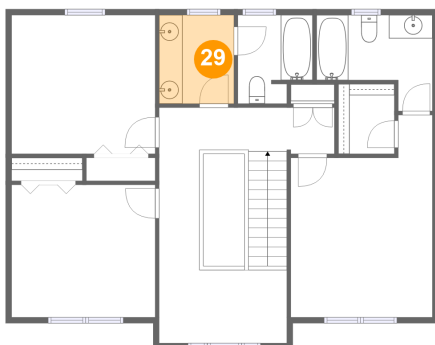
**28** Floor 3 - Bedroom



Dimensions: 12'1" x 17'3"  
Area: 174 sq. ft  
Counted as living area: Yes

Heated: Yes  
Finished: Yes  
Enclosed: Yes  
Contiguous: Yes  
Permitted: Yes  
Wet space: No  
Addition: No  
Conversion: No

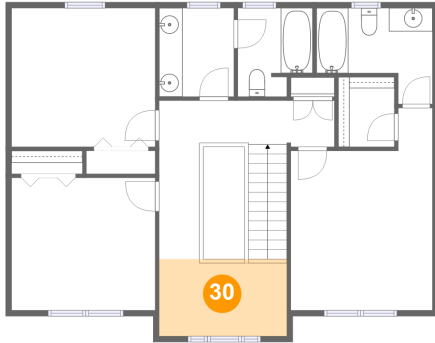
**29** Floor 3 - Bath



Dimensions: 6'4" x 7'6"  
Area: 48 sq. ft  
Counted as living area: Yes

Heated: Yes  
Finished: Yes  
Enclosed: Yes  
Contiguous: Yes  
Permitted: Yes  
Wet space: Yes  
Addition: No  
Conversion: No

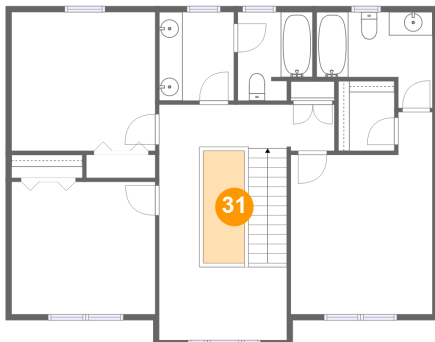
**30** Floor 3 - Sitting Area



Dimensions: 10'11" x 6'7"  
Area: 71 sq. ft  
Counted as living area: Yes

Heated: Yes  
Finished: Yes  
Enclosed: Yes  
Contiguous: Yes  
Permitted: Yes  
Wet space: No  
Addition: No  
Conversion: No

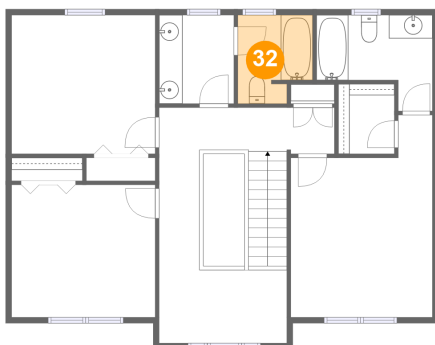
**31** Floor 3 - Open To Below



Dimensions: 3'6" x 9'7"  
Area: 34 sq. ft  
Counted as living area: No

Heated: No  
Finished: No  
Enclosed: No  
Contiguous: Yes  
Permitted: No  
Wet space: No  
Addition: No  
Conversion: No

**32** Floor 3 - Bath



Dimensions: 6'4" x 7'6"  
Area: 43 sq. ft  
Counted as living area: Yes

Heated: Yes  
Finished: Yes  
Enclosed: Yes  
Contiguous: Yes  
Permitted: Yes  
Wet space: Yes  
Addition: No  
Conversion: No