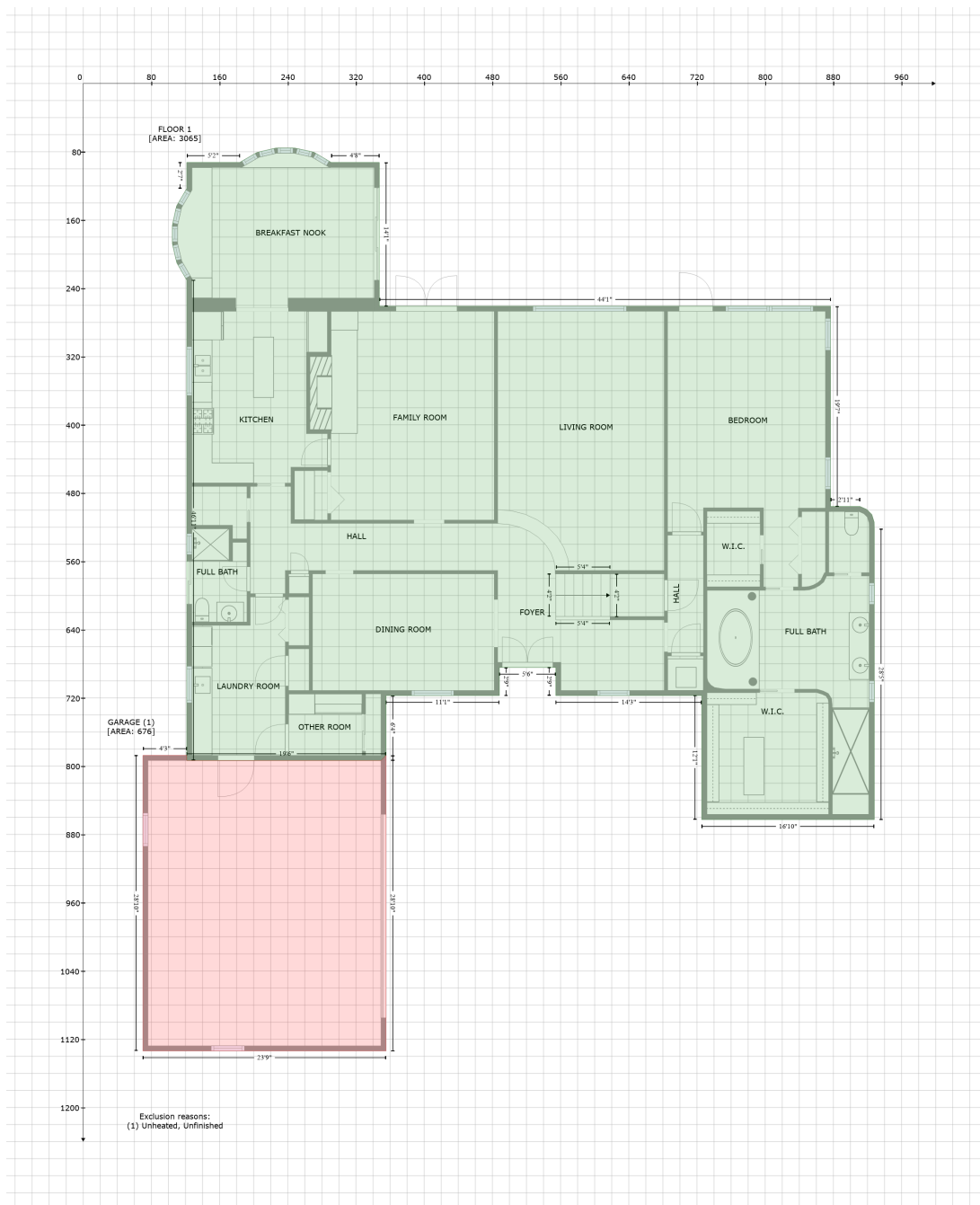


# 224 Harbor View Lane, Harbor Bluffs, Largo, Pinellas County, Florida, United States, 33770

Gross Living Area: 5358 sq. ft



## Space

Area (sq. ft)

Calculation Coordinate Polygon Area Algorithm using inches

FLOOR 1  
(Living area)

3065

$$\begin{aligned}
 & -((248.2 + 270.7) * (75.6 - 80.6) + (270.7 + 290.9) * (80.6 - 92.5) + (290.9 + 347.4) * (92.5 - 92.5) \\
 & + (347.4 + 347.4) * (92.5 - 261) + (347.4 + 876.7) * (261 - 261) + (876.7 + 876.7) * (261 - 495.7) + \\
 & (876.7 + 911.2) * (495.7 - 495.7) + (911.2 + 919.2) * (495.7 - 499.2) + (919.2 + 919.4) * (499.2 - \\
 & 499.3) + (919.4 + 925.1) * (499.3 - 505.1) + (925.1 + 927.9) * (505.1 - 514.1) + (927.9 + 928) * \\
 & (514.1 - 521.8) + (928 + 928) * (521.8 - 862.7) + (928 + 725.6) * (862.7 - 862.7) + (725.6 + 725.6) \\
 & * (862.7 - 717.3) + (725.6 + 554.4) * (717.3 - 717.3) + (554.4 + 554.4) * (717.3 - 684.3) + (554.4 + \\
 & 488.2) * (684.3 - 684.3) + (488.2 + 488.2) * (684.3 - 717.3) + (488.2 + 355.3) * (717.3 - 717.3) +
 \end{aligned}$$

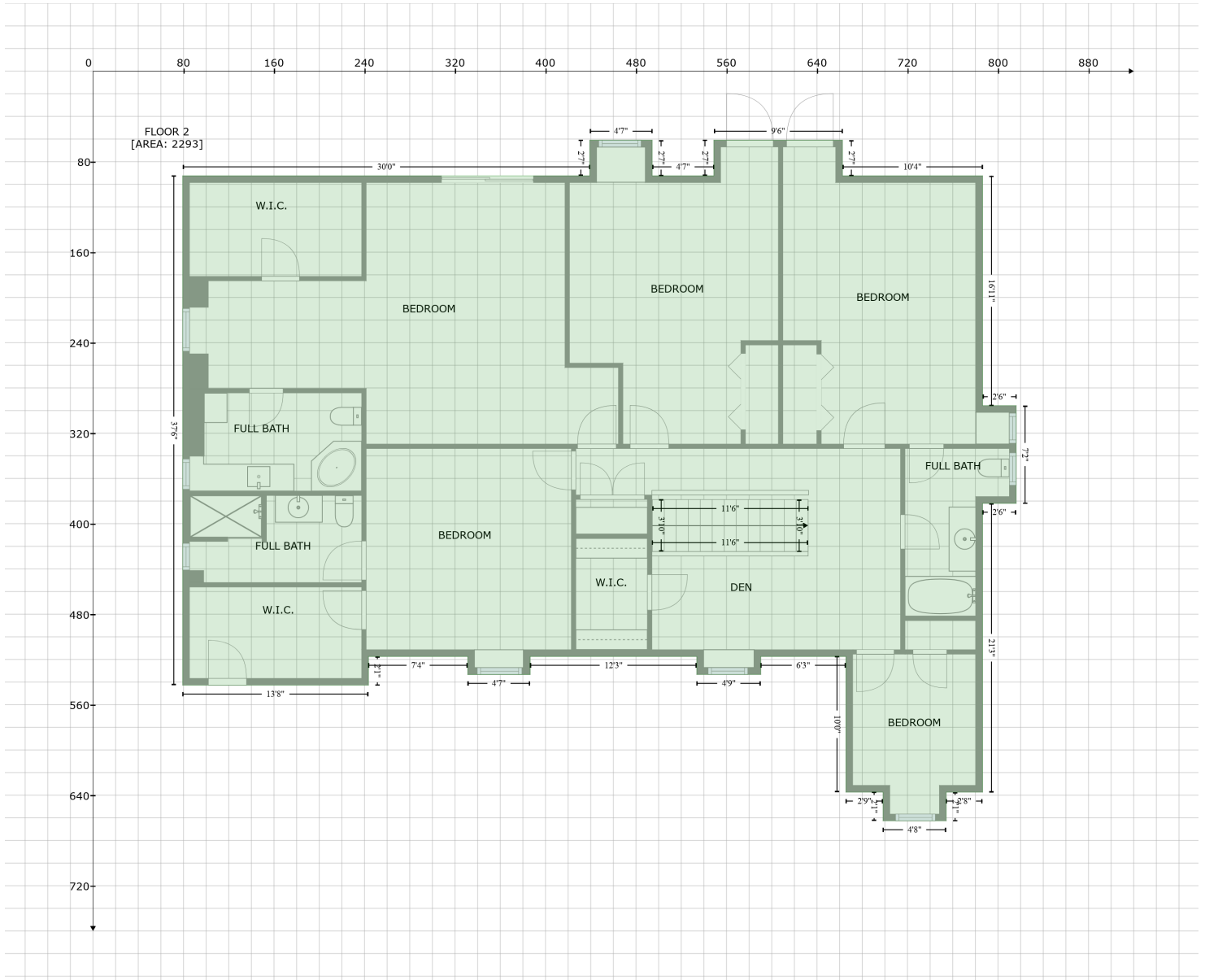
# 224 Harbor View Lane, Harbor Bluffs, Largo, Pinellas County, Florida, United States, 33770

Gross Living Area: 5358 sq. ft

Space	Area (sq. ft)	Calculation <small>Coordinate Polygon Area Algorithm using inches</small>
		$(355.3 + 355.3) * (717.3 - 787.4) + (355.3 + 349.3) * (787.4 - 793.4) + (349.3 + 121.5) * (793.4 - 793.4) + (121.5 + 121.5) * (793.4 - 230.5) + (121.5 + 109.9) * (230.5 - 210.3) + (109.9 + 104.6) * (210.3 - 188) + (104.6 + 104.6) * (188 - 166) + (104.6 + 109.6) * (166 - 143.5) + (109.6 + 121.5) * (143.5 - 123.2) + (121.5 + 121.5) * (123.2 - 92.5) + (121.5 + 183.6) * (92.5 - 92.5) + (183.6 + 203.8) * (92.5 - 80.9) + (203.8 + 226.1) * (80.9 - 75.6) + (226.1 + 248.2) * (75.6 - 75.6) * 0.5 * 0.00694$
GARAGE (Non-living area)	676	$-((121.5 + 121.5) * (787.4 - 793.4) + (121.5 + 349.3) * (793.4 - 793.4) + (349.3 + 355.3) * (793.4 - 787.4) + (355.3 + 355.3) * (787.4 - 1133.7) + (355.3 + 70.1) * (1133.7 - 1133.7) + (70.1 + 70.1) * (1133.7 - 787.4) + (70.1 + 121.5) * (787.4 - 787.4)) * 0.5 * 0.00694$

# 224 Harbor View Lane, Harbor Bluffs, Largo, Pinellas County, Florida, United States, 33770

Gross Living Area: 5358 sq. ft



Space	Area (sq. ft)	Calculation <small>Coordinate Polygon Area Algorithm using inches</small>
FLOOR 2 (Living area)	2293	$  \begin{aligned}  & -((494.3 + 494.3) * (61 - 92.5) + (494.3 + 548.8) * (92.5 - 92.5) + (548.8 + 548.8) * (92.5 - 61) + \\  & (548.8 + 662.5) * (61 - 61) + (662.5 + 662.5) * (61 - 92.5) + (662.5 + 786.4) * (92.5 - 92.5) + \\  & (786.4 + 786.4) * (92.5 - 295.7) + (786.4 + 816.1) * (295.7 - 295.7) + (816.1 + 816.1) * (295.7 - \\  & 382) + (816.1 + 786.4) * (382 - 382) + (786.4 + 786.4) * (382 - 637.3) + (786.4 + 754.2) * (637.3 - \\  & 637.3) + (754.2 + 754.2) * (637.3 - 662.7) + (754.2 + 698.4) * (662.7 - 662.7) + (698.4 + 698.4) * \\  & (662.7 - 637.3) + (698.4 + 665.6) * (637.3 - 637.3) + (665.6 + 665.6) * (637.3 - 517.3) + (665.6 + \\  & 590.3) * (517.3 - 517.3) + (590.3 + 590.3) * (517.3 - 533.3) + (590.3 + 533.7) * (533.3 - 533.3) + \\  & (533.7 + 533.7) * (533.3 - 517.3) + (533.7 + 386.5) * (517.3 - 517.3) + (386.5 + 386.5) * (517.3 - \\  & 533.3) + (386.5 + 331.3) * (533.3 - 533.3) + (331.3 + 331.3) * (533.3 - 517.3) + (331.3 + 243.5) * \\  & (517.3 - 517.3) + (243.5 + 243.5) * (517.3 - 542.7) + (243.5 + 79.3) * (542.7 - 542.7) + (79.3 + \\  & 79.3) * (542.7 - 92.5) + (79.3 + 439.1) * (92.5 - 92.5) + (439.1 + 439.1) * (92.5 - 61) + (439.1 + \\  & 494.3) * (61 - 61)) * 0.5 * 0.00694  \end{aligned}  $