



623 Elk Lane, Waukesha, Waukesha County, Wisconsin, United States, 53188



Property summary


 **1** Garages

 **3** Bedrooms

 **1** Bathrooms

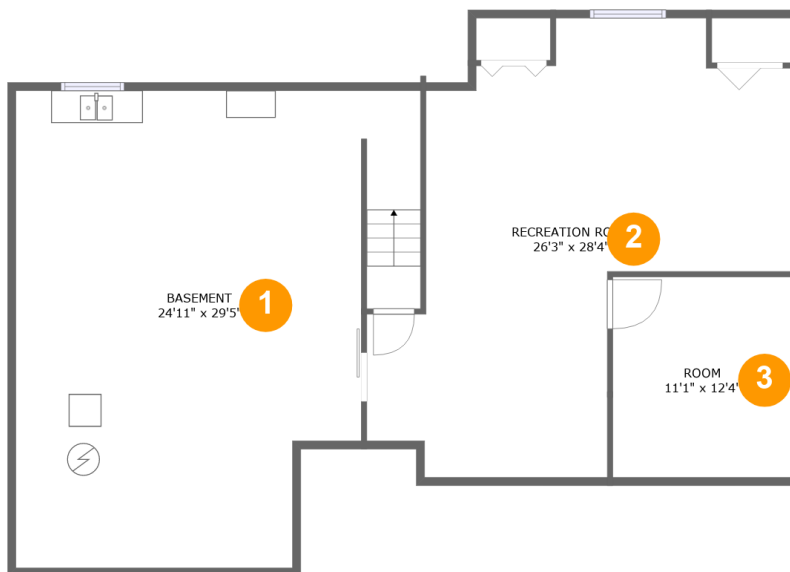
 **1** Half baths

 **2** Floors

 **2,251**
Gross living
area sqft

 **3,432**
Total sqft

623 Elk Lane, Waukesha, Waukesha County, Wisconsin, United States, 53188



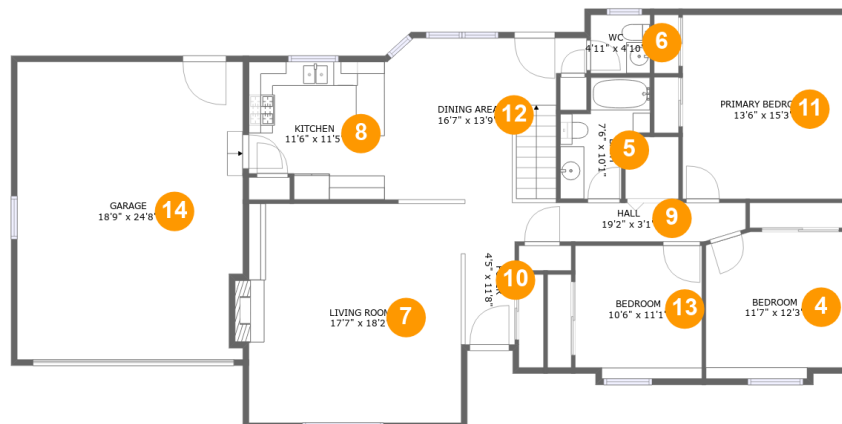
Room dimensions

Floor 1

Total sqft: 1391 Living area: 706

#		Dimensions	sqft	Counted as living area
1	Basement	24'11" x 29'5"	639 sq. ft	No
2	Recreation Room	26'3" x 28'4"	479 sq. ft	Yes
3	Room	11'1" x 12'4"	137 sq. ft	Yes

623 Elk Lane, Waukesha, Waukesha County, Wisconsin, United States, 53188



Room dimensions

Floor 2

Total sqft: 2041 Living area: 1545

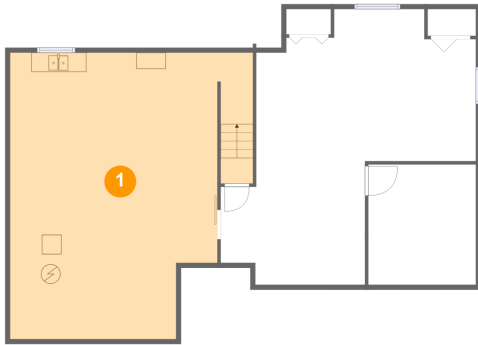
#		Dimensions	sqft	Counted as living area
4	Bedroom	11'7" x 12'3"	136 sq. ft	Yes
5	Bath	7'6" x 10'1"	55 sq. ft	Yes
6	WC	4'11" x 4'10"	24 sq. ft	Yes
7	Living Room	17'7" x 18'2"	327 sq. ft	Yes
8	Kitchen	11'6" x 11'5"	124 sq. ft	Yes
9	Hall	19'2" x 3'1"	59 sq. ft	Yes
10	Foyer	4'5" x 11'8"	52 sq. ft	Yes
11	Primary Bedroom	13'6" x 15'3"	206 sq. ft	Yes
12	Dining Area	16'7" x 13'9"	199 sq. ft	Yes
13	Bedroom	10'6" x 11'1"	114 sq. ft	Yes
14	Garage	18'9" x 24'8"	457 sq. ft	No

Scan captured on Wed, 22 Jan 2025 20:38:00 GMT

Information is calculated by Cubicasa technology deemed highly reliable but not guaranteed.

623 Elk Lane, Waukesha, Waukesha County, Wisconsin, United States, 53188

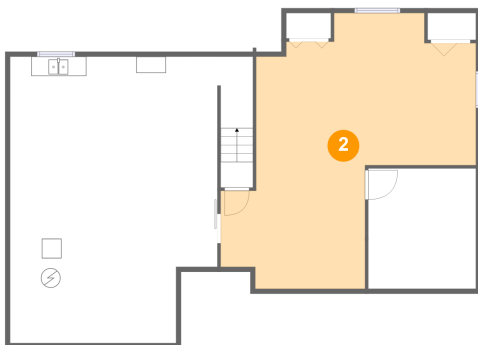
1 Floor 1 - Basement



Dimensions: 24'11" x 29'5"
Area: 639 sq. ft
Counted as living area: No

Heated: Yes
Finished: No
Enclosed: Yes
Contiguous: Yes
Permitted: Yes
Wet space: No
Addition: No
Conversion: No

2 Floor 1 - Recreation Room

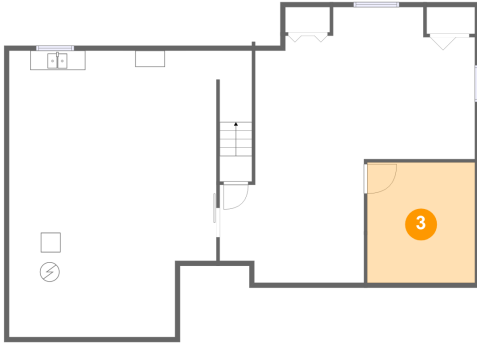


Dimensions: 26'3" x 28'4"
Area: 479 sq. ft
Counted as living area: Yes

Heated: Yes
Finished: Yes
Enclosed: Yes
Contiguous: Yes
Permitted: Yes
Wet space: No
Addition: No
Conversion: No

**623 Elk Lane, Waukesha, Waukesha County,
Wisconsin, United States, 53188**

3 Floor 1 - Room



Dimensions: 11'1" x 12'4"
Area: 137 sq. ft
Counted as living area: Yes

Heated: Yes
Finished: Yes
Enclosed: Yes
Contiguous: Yes
Permitted: Yes
Wet space: No
Addition: No
Conversion: No

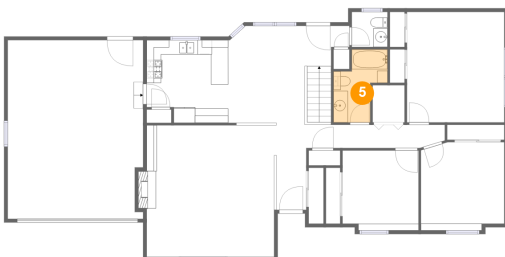
4 Floor 2 - Bedroom



Dimensions: 11'7" x 12'3"
Area: 136 sq. ft
Counted as living area: Yes

Heated: Yes
Finished: Yes
Enclosed: Yes
Contiguous: Yes
Permitted: Yes
Wet space: No
Addition: No
Conversion: No

5 Floor 2 - Bath

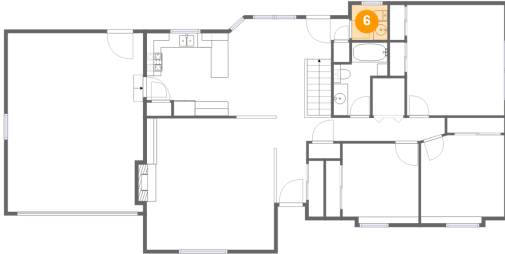


Dimensions: 7'6" x 10'1"
Area: 55 sq. ft
Counted as living area: Yes

Heated: Yes
Finished: Yes
Enclosed: Yes
Contiguous: Yes
Permitted: Yes
Wet space: Yes
Addition: No
Conversion: No

**623 Elk Lane, Waukesha, Waukesha County,
Wisconsin, United States, 53188**

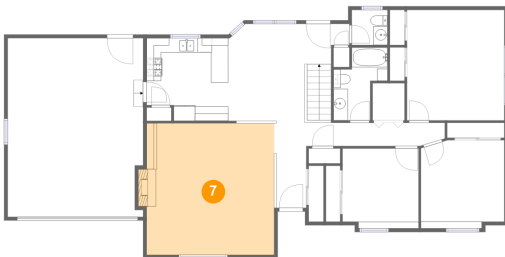
6 Floor 2 - WC



Dimensions: 4'11" x 4'10"
Area: 24 sq. ft
Counted as living area: Yes

Heated: Yes
Finished: Yes
Enclosed: Yes
Contiguous: Yes
Permitted: Yes
Wet space: Yes
Addition: No
Conversion: No

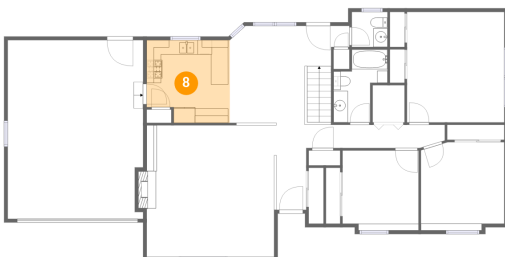
7 Floor 2 - Living Room



Dimensions: 17'7" x 18'2"
Area: 327 sq. ft
Counted as living area: Yes

Heated: Yes
Finished: Yes
Enclosed: Yes
Contiguous: Yes
Permitted: Yes
Wet space: No
Addition: No
Conversion: No

8 Floor 2 - Kitchen

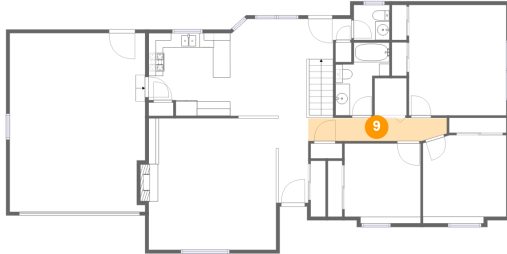


Dimensions: 11'6" x 11'5"
Area: 124 sq. ft
Counted as living area: Yes

Heated: Yes
Finished: Yes
Enclosed: Yes
Contiguous: Yes
Permitted: Yes
Wet space: No
Addition: No
Conversion: No

**623 Elk Lane, Waukesha, Waukesha County,
Wisconsin, United States, 53188**

9 Floor 2 - Hall



Dimensions: 19'2" x 3'1"
Area: 59 sq. ft
Counted as living area: Yes

Heated: Yes
Finished: Yes
Enclosed: Yes
Contiguous: Yes
Permitted: Yes
Wet space: No
Addition: No
Conversion: No

10 Floor 2 - Foyer



Dimensions: 4'5" x 11'8"
Area: 52 sq. ft
Counted as living area: Yes

Heated: Yes
Finished: Yes
Enclosed: Yes
Contiguous: Yes
Permitted: Yes
Wet space: No
Addition: No
Conversion: No

11 Floor 2 - Primary Bedroom



Dimensions: 13'6" x 15'3"
Area: 206 sq. ft
Counted as living area: Yes

Heated: Yes
Finished: Yes
Enclosed: Yes
Contiguous: Yes
Permitted: Yes
Wet space: No
Addition: No
Conversion: No

**623 Elk Lane, Waukesha, Waukesha County,
Wisconsin, United States, 53188**

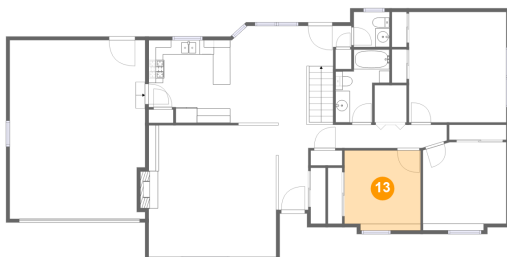
12 Floor 2 - Dining Area



Dimensions: 16'7" x 13'9"
Area: 199 sq. ft
Counted as living area: Yes

Heated: Yes
Finished: Yes
Enclosed: Yes
Contiguous: Yes
Permitted: Yes
Wet space: No
Addition: No
Conversion: No

13 Floor 2 - Bedroom



Dimensions: 10'6" x 11'1"
Area: 114 sq. ft
Counted as living area: Yes

Heated: Yes
Finished: Yes
Enclosed: Yes
Contiguous: Yes
Permitted: Yes
Wet space: No
Addition: No
Conversion: No

14 Floor 2 - Garage



Dimensions: 18'9" x 24'8"
Area: 457 sq. ft
Counted as living area: No

Heated: No
Finished: No
Enclosed: Yes
Contiguous: Yes
Permitted: Yes
Wet space: No
Addition: No
Conversion: No