




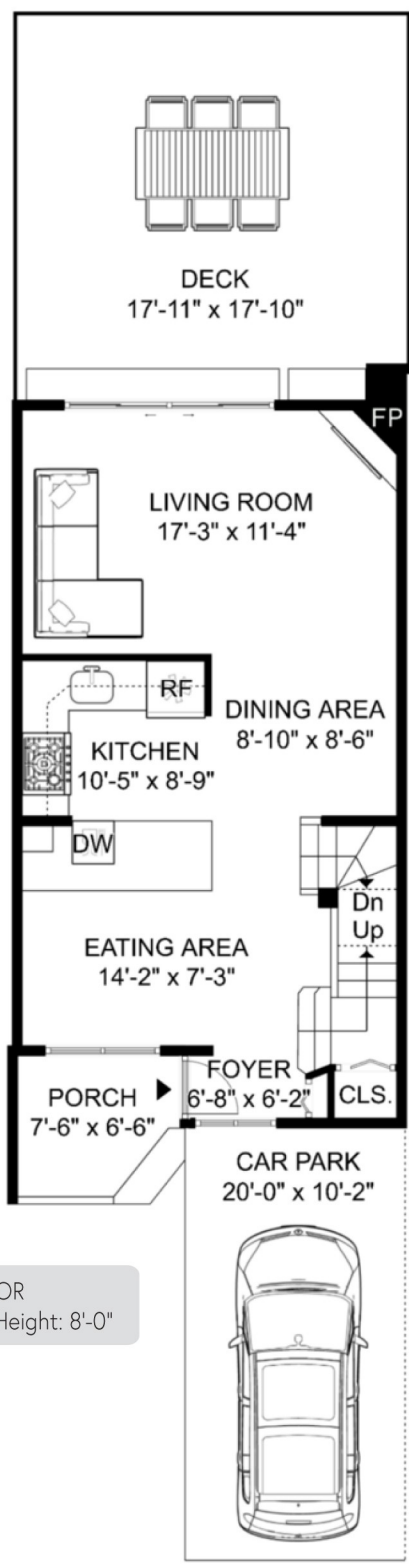
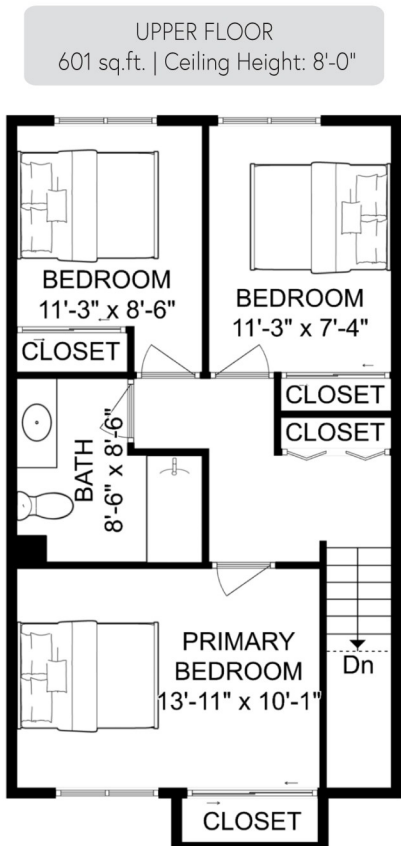
53 - 1930 Cedar Village Crescent North Vancouver

INTERIOR LIVING SPACE	(sq.ft.)
Upper Floor	601
Main Floor	606
Lower Floor	561
Total Area	1,768

AUXILIARY	
Porch	43
Car Park	203
Deck	320
Combined Total	2,334

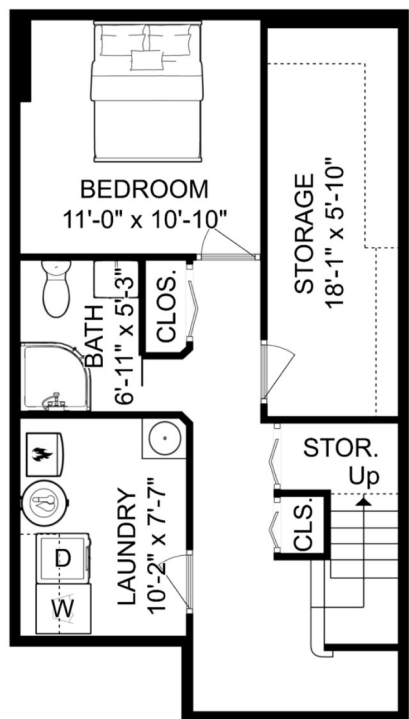
  

4 bed 2 bath 1 parking



MAIN FLOOR
606 sq.ft. | Ceiling Height: 8'-0"

LOWER FLOOR
561 sq.ft. | Ceiling Height: 7'-6"



The floor plan is not suitable for architectural/construction and is covered under E&O. All right reserved for Virtualized Studio. User shall not publish and distribute such material and/or incorporate it in other works in any form.

