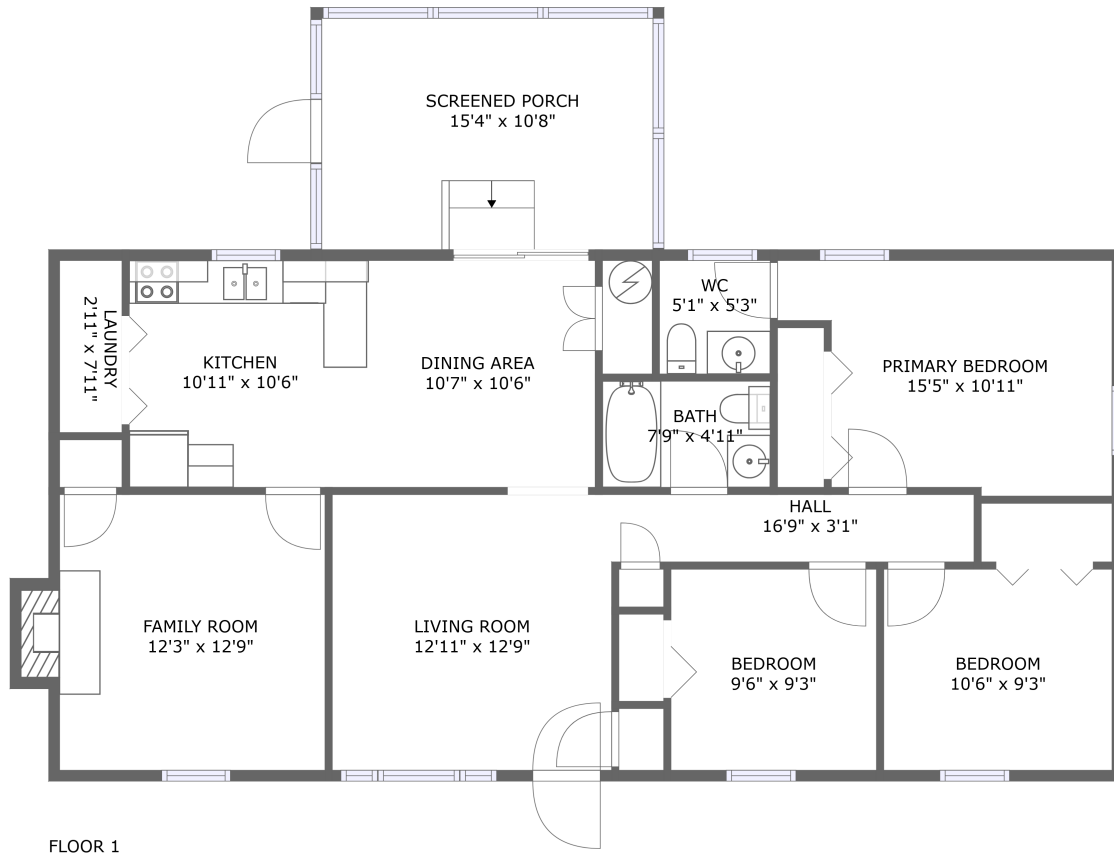



4002 Yorktown Drive, Hopewell, Hopewell, Virginia, United States, 23860



Property summary


 **0** Garages

 **3** Bedrooms

 **1** Bathrooms

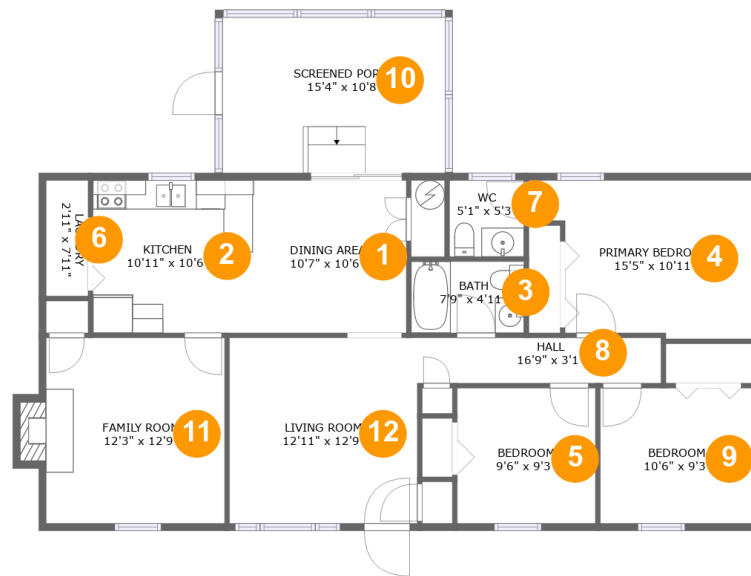
 **1** Half baths

 **1** Floors

 **1,216** Gross living area sqft

 **1,407** Total sqft

4002 Yorktown Drive, Hopewell, Hopewell, Virginia, United States, 23860



Room dimensions

Floor 1

Total sqft: 1407 Living area: 1216

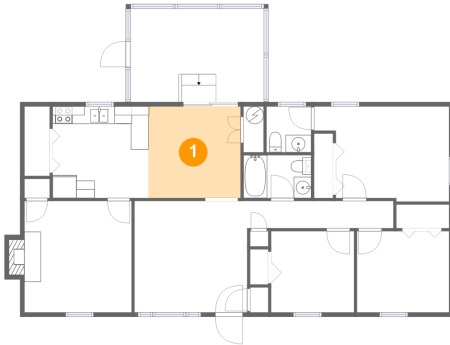
#		Dimensions	sqft	Counted as living area
1	Dining Room	10'7" x 10'6"	110 sq. ft	Yes
2	Kitchen	10'11" x 10'6"	115 sq. ft	Yes
3	Bath	7'9" x 4'11"	38 sq. ft	Yes
4	Bedroom	15'5" x 10'11"	145 sq. ft	Yes
5	Bedroom	9'6" x 9'3"	88 sq. ft	Yes
6	Utility	2'11" x 7'11"	23 sq. ft	Yes
7	Bath	5'1" x 5'3"	27 sq. ft	Yes
8	Hall	16'9" x 3'1"	52 sq. ft	Yes
9	Bedroom	10'6" x 9'3"	98 sq. ft	Yes
10	Outdoor	15'4" x 10'8"	163 sq. ft	No
11	Living Room	12'3" x 12'9"	163 sq. ft	Yes

**4002 Yorktown Drive, Hopewell, Hopewell, Virginia,
United States, 23860**

#		Dimensions	sqft	Counted as living area
12	Living Room	12'11" x 12'9"	164 sq. ft	Yes

4002 Yorktown Drive, Hopewell, Hopewell, Virginia,
United States, 23860

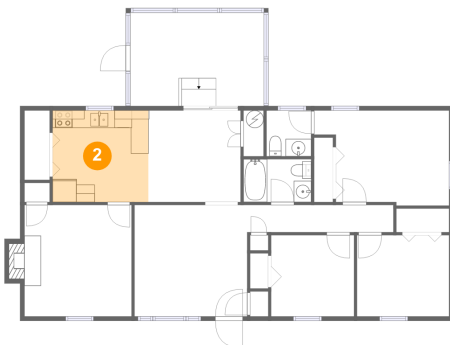
1 Floor 1 - Dining Room



Dimensions: 10'7" x 10'6"
Area: 110 sq. ft
Counted as living area: Yes

Heated: Yes
Finished: Yes
Enclosed: Yes
Contiguous: Yes
Permitted: Yes
Wet space: No
Addition: No
Conversion: No

2 Floor 1 - Kitchen

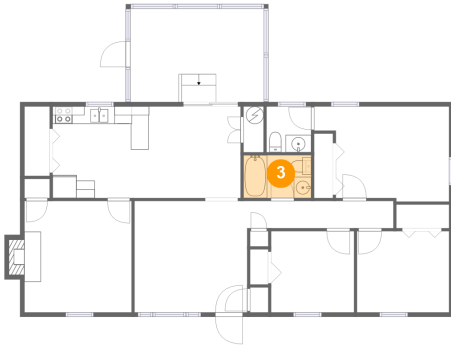


Dimensions: 10'11" x 10'6"
Area: 115 sq. ft
Counted as living area: Yes

Heated: Yes
Finished: Yes
Enclosed: Yes
Contiguous: Yes
Permitted: Yes
Wet space: No
Addition: No
Conversion: No

**4002 Yorktown Drive, Hopewell, Hopewell, Virginia,
United States, 23860**

3 Floor 1 - Bath



Dimensions: 7'9" x 4'11"
Area: 38 sq. ft
Counted as living area: Yes

Heated: Yes
Finished: Yes
Enclosed: Yes
Contiguous: Yes
Permitted: Yes
Wet space: Yes
Addition: No
Conversion: No

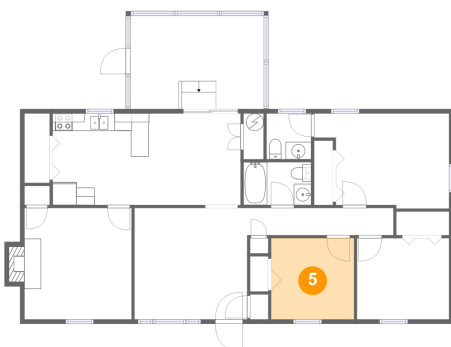
4 Floor 1 - Bedroom



Dimensions: 15'5" x 10'11"
Area: 145 sq. ft
Counted as living area: Yes

Heated: Yes
Finished: Yes
Enclosed: Yes
Contiguous: Yes
Permitted: Yes
Wet space: No
Addition: No
Conversion: No

5 Floor 1 - Bedroom



Dimensions: 9'6" x 9'3"
Area: 88 sq. ft
Counted as living area: Yes

Heated: Yes
Finished: Yes
Enclosed: Yes
Contiguous: Yes
Permitted: Yes
Wet space: No
Addition: No
Conversion: No

4002 Yorktown Drive, Hopewell, Hopewell, Virginia,
United States, 23860

6 Floor 1 - Utility



Dimensions: 2'11" x 7'11"
Area: 23 sq. ft
Counted as living area: Yes

Heated: Yes
Finished: Yes
Enclosed: Yes
Contiguous: Yes
Permitted: Yes
Wet space: No
Addition: No
Conversion: No

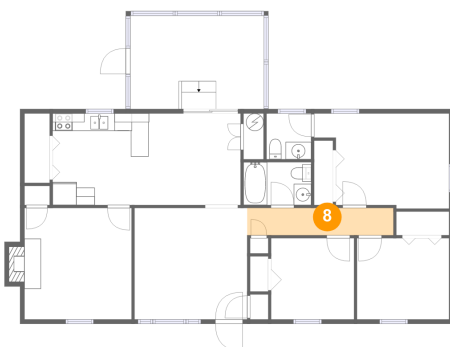
7 Floor 1 - Bath



Dimensions: 5'1" x 5'3"
Area: 27 sq. ft
Counted as living area: Yes

Heated: Yes
Finished: Yes
Enclosed: Yes
Contiguous: Yes
Permitted: Yes
Wet space: Yes
Addition: No
Conversion: No

8 Floor 1 - Hall

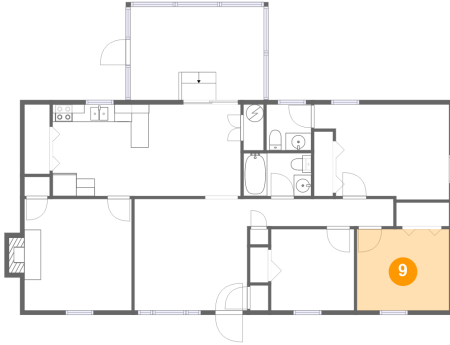


Dimensions: 16'9" x 3'1"
Area: 52 sq. ft
Counted as living area: Yes

Heated: Yes
Finished: Yes
Enclosed: Yes
Contiguous: Yes
Permitted: Yes
Wet space: No
Addition: No
Conversion: No

4002 Yorktown Drive, Hopewell, Hopewell, Virginia,
United States, 23860

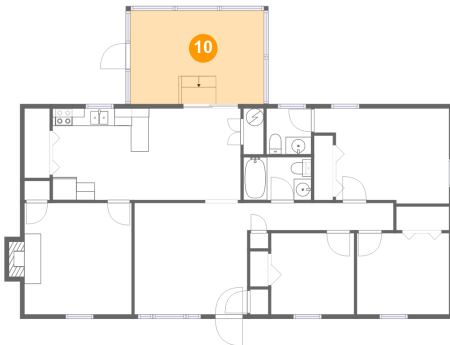
9 Floor 1 - Bedroom



Dimensions: 10'6" x 9'3"
Area: 98 sq. ft
Counted as living area: Yes

Heated: Yes
Finished: Yes
Enclosed: Yes
Contiguous: Yes
Permitted: Yes
Wet space: No
Addition: No
Conversion: No

10 Floor 1 - Outdoor



Dimensions: 15'4" x 10'8"
Area: 163 sq. ft
Counted as living area: No

Heated: No
Finished: Yes
Enclosed: No
Contiguous: Yes
Permitted: Yes
Wet space: No
Addition: No
Conversion: No

11 Floor 1 - Living Room



Dimensions: 12'3" x 12'9"
Area: 163 sq. ft
Counted as living area: Yes

Heated: Yes
Finished: Yes
Enclosed: Yes
Contiguous: Yes
Permitted: Yes
Wet space: No
Addition: No
Conversion: No

4002 Yorktown Drive, Hopewell, Hopewell, Virginia,
United States, 23860

12 Floor 1 - Living Room



Dimensions: 12'11" x 12'9"
Area: 164 sq. ft
Counted as living area: Yes

Heated: Yes
Finished: Yes
Enclosed: Yes
Contiguous: Yes
Permitted: Yes
Wet space: No
Addition: No
Conversion: No