



Home report


10417 W. Alyssa Ln.,Peoria,AZ,US





Property summary


 **1** Garages


 **3** Bedrooms

 **2** Bathrooms

 **1** Half baths

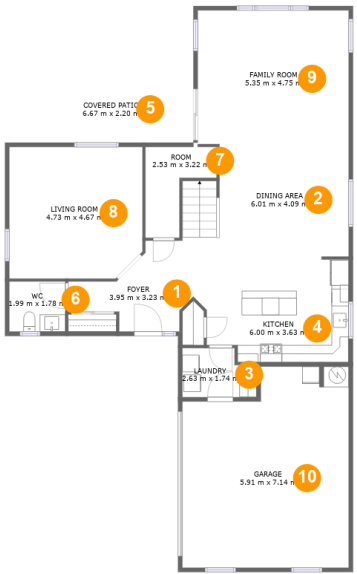
 **2** Floors

 **260** Gross living area m2

 **317** Total m2

Home report

10417 W. Alyssa Ln.,Peoria,AZ,US



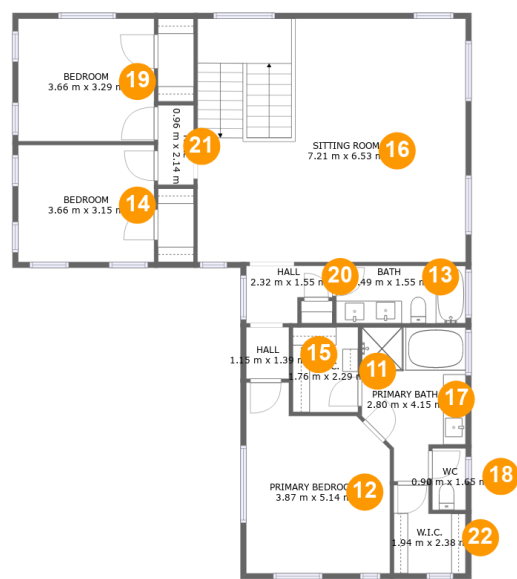
Room dimensions

Floor 1Total m2: 180 Living area: 123

#		Dimensions	m2	Counted as living area
1	Foyer	3.95 m x 3.23 m	8 m2	Yes
2	Dining Area	6.01 m x 4.09 m	22 m2	Yes
3	Laundry	2.63 m x 1.74 m	4 m2	Yes
4	Kitchen	6.00 m x 3.63 m	19 m2	Yes
5	Covered Patio	6.67 m x 2.20 m	15 m2	No
6	WC	1.99 m x 1.78 m	4 m2	Yes
7	Room	2.53 m x 3.22 m	5 m2	Yes
8	Living Room	4.73 m x 4.67 m	22 m2	Yes
9	Family Room	5.35 m x 4.75 m	25 m2	Yes
10	Garage	5.91 m x 7.14 m	39 m2	No

Home report

10417 W. Alyssa Ln.,Peoria,AZ,US



Room dimensions

Floor 2 Total m2: 137 Living area: 137

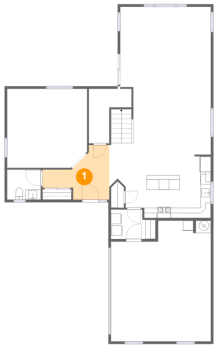
#		Dimensions	m2	Counted as living area
11	W.I.C.	1.76 m x 2.29 m	4 m2	Yes
12	Primary Bedroom	3.87 m x 5.14 m	17 m2	Yes
13	Bath	3.49 m x 1.55 m	5 m2	Yes
14	Bedroom	3.66 m x 3.15 m	12 m2	Yes
15	Hall	1.15 m x 1.39 m	2 m2	Yes
16	Sitting Room	7.21 m x 6.53 m	47 m2	Yes
17	Primary Bath	2.80 m x 4.15 m	9 m2	Yes
18	WC	0.90 m x 1.65 m	1 m2	Yes
19	Bedroom	3.66 m x 3.29 m	12 m2	Yes
20	Hall	2.32 m x 1.55 m	3 m2	Yes
21	Hall	0.96 m x 2.14 m	2 m2	Yes

Home report

10417 W. Alyssa Ln.,Peoria,AZ,US

#		Dimensions	m2	Counted as living area
22	W.I.C.	1.94 m x 2.38 m	4 m2	Yes

1 Floor 1 - Foyer



Dimensions: 3.95 m x 3.23 m
Area: 8 m2
Counted as living area: Yes

Heated: Yes
Finished: Yes
Enclosed: Yes
Contiguous: Yes
Permitted: Yes
Wet space: No
Addition: No
Conversion: No

2 Floor 1 - Dining Area



Dimensions: 6.01 m x 4.09 m
Area: 22 m2
Counted as living area: Yes

Heated: Yes
Finished: Yes
Enclosed: Yes
Contiguous: Yes
Permitted: Yes
Wet space: No
Addition: No
Conversion: No

3 Floor 1 - Laundry



Dimensions: 2.63 m x 1.74 m
Area: 4 m2
Counted as living area: Yes

Heated: Yes
Finished: Yes
Enclosed: Yes
Contiguous: Yes
Permitted: Yes
Wet space: No
Addition: No
Conversion: No

4 Floor 1 - Kitchen



Dimensions: 6.00 m x 3.63 m
Area: 19 m2
Counted as living area: Yes

Heated: Yes
Finished: Yes
Enclosed: Yes
Contiguous: Yes
Permitted: Yes
Wet space: No
Addition: No
Conversion: No

5 Floor 1 - Covered Patio



Dimensions: 6.67 m x 2.20 m
Area: 15 m2
Counted as living area: No

Heated: No
Finished: Yes
Enclosed: No
Contiguous: Yes
Permitted: Yes
Wet space: No
Addition: No
Conversion: No

6 Floor 1 - WC



Dimensions: 1.99 m x 1.78 m
Area: 4 m2
Counted as living area: Yes

Heated: Yes
Finished: Yes
Enclosed: Yes
Contiguous: Yes
Permitted: Yes
Wet space: Yes
Addition: No
Conversion: No

7 Floor 1 - Room



Dimensions: 2.53 m x 3.22 m
Area: 5 m2
Counted as living area: Yes

Heated: Yes
Finished: Yes
Enclosed: Yes
Contiguous: Yes
Permitted: Yes
Wet space: No
Addition: No
Conversion: No

8 Floor 1 - Living Room



Dimensions: 4.73 m x 4.67 m
Area: 22 m2
Counted as living area: Yes

Heated: Yes
Finished: Yes
Enclosed: Yes
Contiguous: Yes
Permitted: Yes
Wet space: No
Addition: No
Conversion: No

9 Floor 1 - Family Room



Dimensions: 5.35 m x 4.75 m
Area: 25 m2
Counted as living area: Yes

Heated: Yes
Finished: Yes
Enclosed: Yes
Contiguous: Yes
Permitted: Yes
Wet space: No
Addition: No
Conversion: No

10 Floor 1 - Garage



Dimensions: 5.91 m x 7.14 m
Area: 39 m2
Counted as living area: No

Heated: No
Finished: No
Enclosed: Yes
Contiguous: Yes
Permitted: Yes
Wet space: No
Addition: No
Conversion: No

11 Floor 2 - W.I.C.



Dimensions: 1.76 m x 2.29 m
Area: 4 m2
Counted as living area: Yes

Heated: Yes
Finished: Yes
Enclosed: Yes
Contiguous: Yes
Permitted: Yes
Wet space: No
Addition: No
Conversion: No

12 Floor 2 - Primary Bedroom



Dimensions: 3.87 m x 5.14 m
Area: 17 m2
Counted as living area: Yes

Heated: Yes
Finished: Yes
Enclosed: Yes
Contiguous: Yes
Permitted: Yes
Wet space: No
Addition: No
Conversion: No

13 Floor 2 - Bath



Dimensions: 3.49 m x 1.55 m
Area: 5 m2
Counted as living area: Yes

Heated: Yes
Finished: Yes
Enclosed: Yes
Contiguous: Yes
Permitted: Yes
Wet space: Yes
Addition: No
Conversion: No

14 Floor 2 - Bedroom



Dimensions: 3.66 m x 3.15 m
Area: 12 m2
Counted as living area: Yes

Heated: Yes
Finished: Yes
Enclosed: Yes
Contiguous: Yes
Permitted: Yes
Wet space: No
Addition: No
Conversion: No

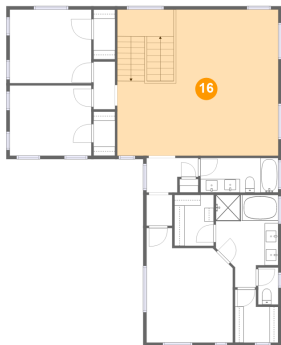
15 Floor 2 - Hall



Dimensions: 1.15 m x 1.39 m
Area: 2 m2
Counted as living area: Yes

Heated: Yes
Finished: Yes
Enclosed: Yes
Contiguous: Yes
Permitted: Yes
Wet space: No
Addition: No
Conversion: No

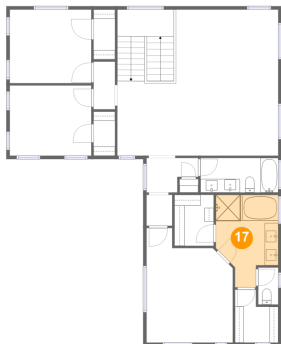
16 Floor 2 - Sitting Room



Dimensions: 7.21 m x 6.53 m
Area: 47 m2
Counted as living area: Yes

Heated: Yes
Finished: Yes
Enclosed: Yes
Contiguous: Yes
Permitted: Yes
Wet space: No
Addition: No
Conversion: No

17 Floor 2 - Primary Bath



Dimensions: 2.80 m x 4.15 m
Area: 9 m2
Counted as living area: Yes

Heated: Yes
Finished: Yes
Enclosed: Yes
Contiguous: Yes
Permitted: Yes
Wet space: Yes
Addition: No
Conversion: No

18 Floor 2 - WC



Dimensions: 0.90 m x 1.65 m
Area: 1 m2
Counted as living area: Yes

Heated: Yes
Finished: Yes
Enclosed: Yes
Contiguous: Yes
Permitted: Yes
Wet space: Yes
Addition: No
Conversion: No

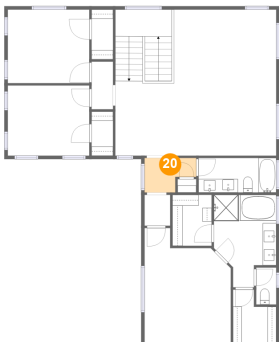
19 Floor 2 - Bedroom



Dimensions: 3.66 m x 3.29 m
Area: 12 m2
Counted as living area: Yes

Heated: Yes
Finished: Yes
Enclosed: Yes
Contiguous: Yes
Permitted: Yes
Wet space: No
Addition: No
Conversion: No

20 Floor 2 - Hall



Dimensions: 2.32 m x 1.55 m
Area: 3 m2
Counted as living area: Yes

Heated: Yes
Finished: Yes
Enclosed: Yes
Contiguous: Yes
Permitted: Yes
Wet space: No
Addition: No
Conversion: No

21 Floor 2 - Hall



Dimensions: 0.96 m x 2.14 m
Area: 2 m2
Counted as living area: Yes

Heated: Yes
Finished: Yes
Enclosed: Yes
Contiguous: Yes
Permitted: Yes
Wet space: No
Addition: No
Conversion: No

22 Floor 2 - W.I.C.



Dimensions: 1.94 m x 2.38 m
Area: 4 m2
Counted as living area: Yes

Heated: Yes
Finished: Yes
Enclosed: Yes
Contiguous: Yes
Permitted: Yes
Wet space: No
Addition: No
Conversion: No