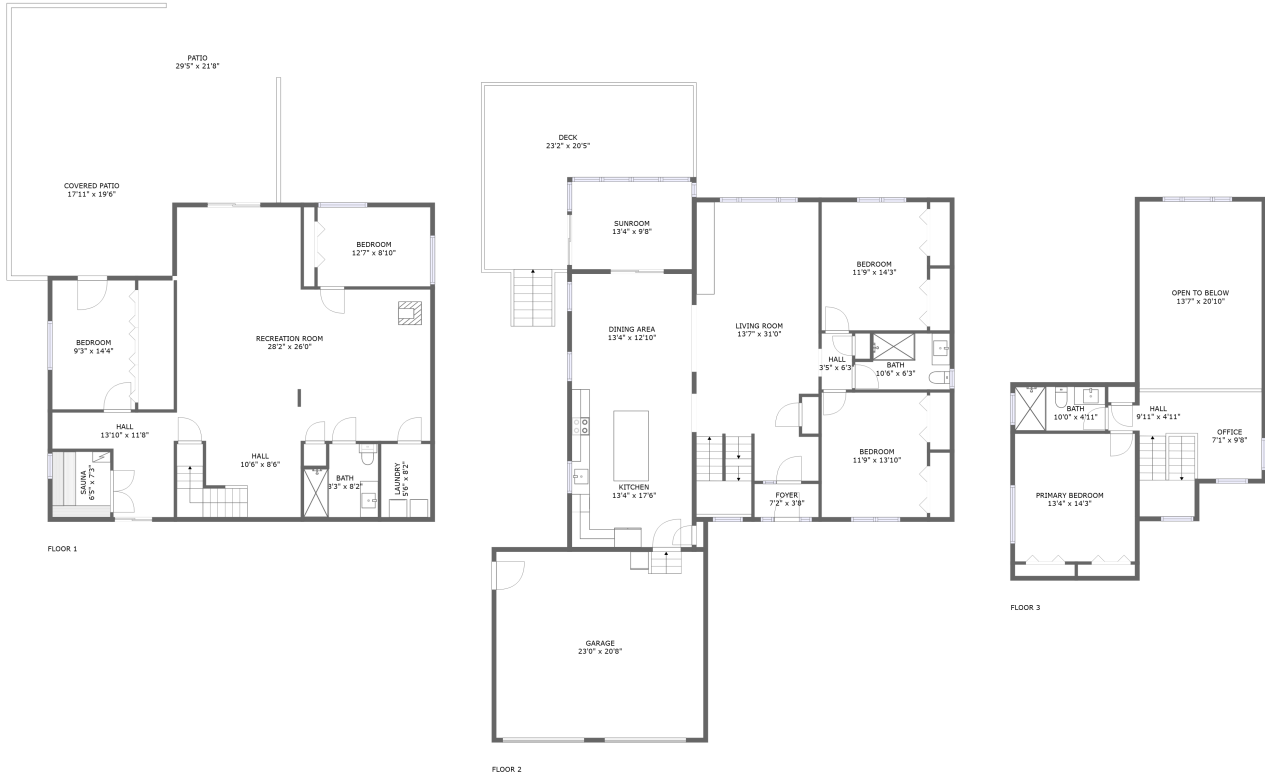
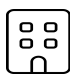



342 Scenic Dr, Albrightsville, Pennsylvania, United States




Property Summary


 **3** floors

 **5** bedrooms

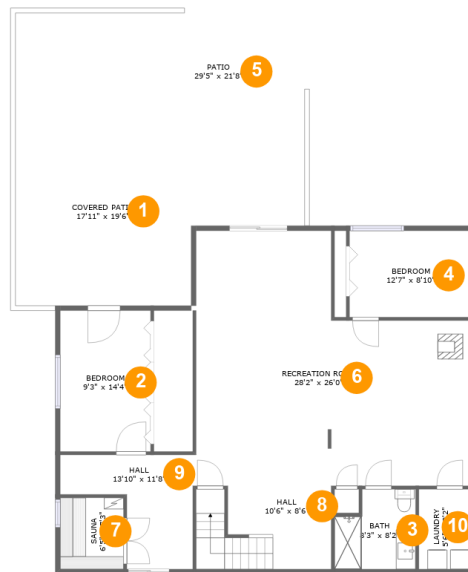
 **3** bathrooms

 **5,509** total sqft

 **1** garages

 **3,541** Gross Living Area sqft

342 Scenic Dr, Albrightsville, Pennsylvania, United States



Room Dimensions

Floor 1**Total sqft: 2199****Living area: 1414**

#	Room name	Dimensions	Area (sqft)	Counted as Living Area
1	Covered Patio	17'11" x 19'6"	349 sq. ft	No
2	Bedroom	9'3" x 14'4"	132 sq. ft	Yes
3	Bath	8'3" x 8'2"	60 sq. ft	Yes
4	Bedroom	12'7" x 8'10"	111 sq. ft	Yes
5	Patio	29'5" x 21'8"	436 sq. ft	No
6	Recreation Room	28'2" x 26'0"	601 sq. ft	Yes
7	Sauna	6'5" x 7'3"	47 sq. ft	Yes
8	Hall	10'6" x 8'6"	113 sq. ft	Yes
9	Hall	13'10" x 11'8"	107 sq. ft	Yes
10	Laundry	5'6" x 8'2"	45 sq. ft	Yes

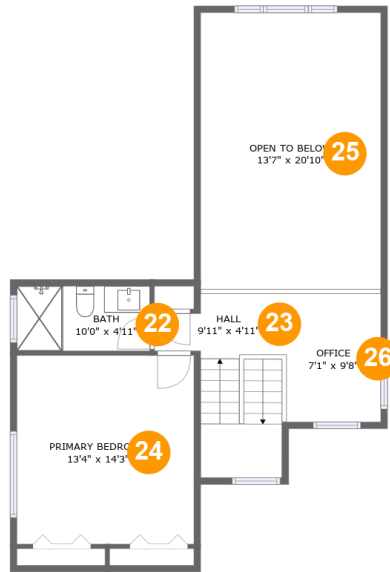
342 Scenic Dr, Albrightsville, Pennsylvania, United States**Room Dimensions****Floor 2****Total sqft: 2507****Living area: 1635**

#	Room name	Dimensions	Area (sqft)	Counted as Living Area
11	Hall	3'5" x 6'3"	21 sq. ft	Yes
12	Deck	23'2" x 20'5"	358 sq. ft	No
13	Bedroom	11'9" x 13'10"	163 sq. ft	Yes
14	Garage	23'0" x 20'8"	477 sq. ft	No
15	Dining Area	13'4" x 12'10"	172 sq. ft	Yes
16	Bath	10'6" x 6'3"	59 sq. ft	Yes
17	Kitchen	13'4" x 17'6"	234 sq. ft	Yes
18	Living Room	13'7" x 31'0"	434 sq. ft	Yes
19	Sunroom	13'4" x 9'8"	130 sq. ft	Yes
20	Foyer	7'2" x 3'8"	26 sq. ft	Yes
21	Bedroom	11'9" x 14'3"	167 sq. ft	Yes

Scan captured on Thu, 30 May 2024 21:16:31 GMT

Information is calculated by CubiCasa technology; deemed highly reliable but not guaranteed.

342 Scenic Dr, Albrightsville, Pennsylvania, United States



Room Dimensions

Floor 3

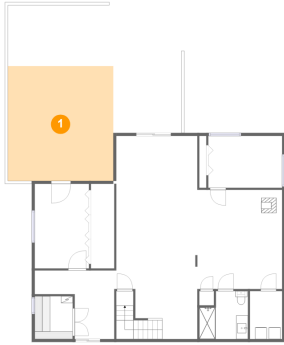
Total sqft: 803

Living area: 492

#	Room name	Dimensions	Area (sqft)	Counted as Living Area
22	Bath	10'0" x 4'11"	49 sq. ft	Yes
23	Hall	9'11" x 4'11"	100 sq. ft	Yes
24	Primary Bedroom	13'4" x 14'3"	190 sq. ft	Yes
25	Open To Below	13'7" x 20'10"	283 sq. ft	No
26	Office	7'1" x 9'8"	71 sq. ft	Yes

342 Scenic Dr, Albrightsville, Pennsylvania, United States

1 Floor 1 - Covered Patio



Dimensions: 17'11" x 19'6"
Area: 349 sq. ft
Counted as Living Area: No

Heated: No
Finished: Yes
Enclosed: No
Contiguous: Yes
Permitted: Yes
Wet Space: No
Addition: No
Conversion: No

2 Floor 1 - Bedroom



Dimensions: 9'3" x 14'4"
Area: 132 sq. ft
Counted as Living Area: Yes

Heated: Yes
Finished: Yes
Enclosed: Yes
Contiguous: Yes
Permitted: Yes
Wet Space: No
Addition: No
Conversion: No

342 Scenic Dr, Albrightsville, Pennsylvania, United States

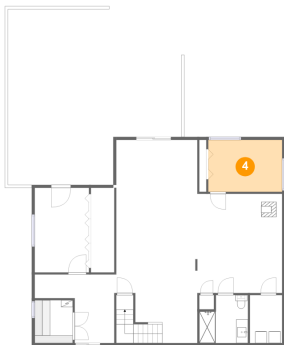
3 Floor 1 - Bath



Dimensions: 8'3" x 8'2"
Area: 60 sq. ft
Counted as Living Area:
Yes

Heated: Yes
Finished: Yes
Enclosed: Yes
Contiguous:
Yes
Permitted: Yes
Wet Space: Yes
Addition: No
Conversion: No

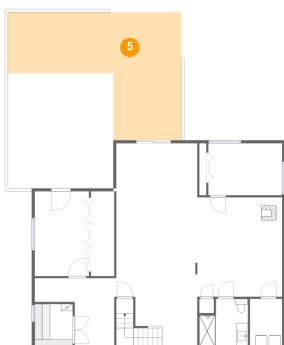
4 Floor 1 - Bedroom



Dimensions: 12'7" x 8'10"
Area: 111 sq. ft
Counted as Living Area:
Yes

Heated: Yes
Finished: Yes
Enclosed: Yes
Contiguous:
Yes
Permitted: Yes
Wet Space: No
Addition: No
Conversion: No

5 Floor 1 - Patio



Dimensions: 29'5" x 21'8"
Area: 436 sq. ft
Counted as Living Area: No

Heated: No
Finished: Yes
Enclosed: No
Contiguous: Yes
Permitted: Yes
Wet Space: No
Addition: No
Conversion: No

342 Scenic Dr, Albrightsville, Pennsylvania, United States

6 Floor 1 - Recreation Room



Dimensions: 28'2" x 26'0"
Area: 601 sq. ft
Counted as Living Area:
Yes

Heated: Yes
Finished: Yes
Enclosed: Yes
Contiguous:
Yes
Permitted: Yes
Wet Space: No
Addition: No
Conversion: No

7 Floor 1 - Sauna



Dimensions: 6'5" x 7'3"
Area: 47 sq. ft
Counted as Living Area:
Yes

Heated: Yes
Finished: Yes
Enclosed: Yes
Contiguous:
Yes
Permitted: Yes
Wet Space: No
Addition: No
Conversion: No

8 Floor 1 - Hall

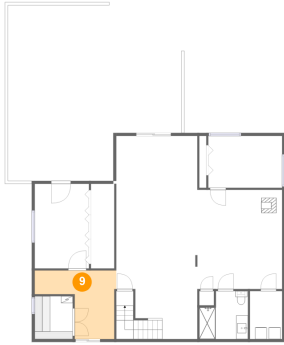


Dimensions: 10'6" x 8'6"
Area: 113 sq. ft
Counted as Living Area:
Yes

Heated: Yes
Finished: Yes
Enclosed: Yes
Contiguous:
Yes
Permitted: Yes
Wet Space: No
Addition: No
Conversion: No

342 Scenic Dr, Albrightsville, Pennsylvania, United States

9 Floor 1 - Hall



Dimensions: 13'10" x 11'8"
Area: 107 sq. ft
Counted as Living Area:
Yes

Heated: Yes
Finished: Yes
Enclosed: Yes
Contiguous:
Yes
Permitted: Yes
Wet Space: No
Addition: No
Conversion: No

10 Floor 1 - Laundry



Dimensions: 5'6" x 8'2"
Area: 45 sq. ft
Counted as Living Area:
Yes

Heated: Yes
Finished: Yes
Enclosed: Yes
Contiguous:
Yes
Permitted: Yes
Wet Space: No
Addition: No
Conversion: No

11 Floor 2 - Hall



Dimensions: 3'5" x 6'3"
Area: 21 sq. ft
Counted as Living Area:
Yes

Heated: Yes
Finished: Yes
Enclosed: Yes
Contiguous:
Yes
Permitted: Yes
Wet Space: No
Addition: No
Conversion: No

342 Scenic Dr, Albrightsville, Pennsylvania, United States

12 Floor 2 - Deck



Dimensions: 23'2" x 20'5"
Area: 358 sq. ft
Counted as Living Area: No

Heated: No
Finished: Yes
Enclosed: No
Contiguous: Yes
Permitted: Yes
Wet Space: No
Addition: No
Conversion: No

13 Floor 2 - Bedroom



Dimensions: 11'9" x 13'10"
Area: 163 sq. ft
Counted as Living Area: Yes

Heated: Yes
Finished: Yes
Enclosed: Yes
Contiguous: Yes
Permitted: Yes
Wet Space: No
Addition: No
Conversion: No

14 Floor 2 - Garage



Dimensions: 23'0" x 20'8"
Area: 477 sq. ft
Counted as Living Area: No

Heated: No
Finished: No
Enclosed: Yes
Contiguous: Yes
Permitted: Yes
Wet Space: No
Addition: No
Conversion: No

342 Scenic Dr, Albrightsville, Pennsylvania, United States

15 Floor 2 - Dining Area



Dimensions: 13'4" x 12'10"
Area: 172 sq. ft
Counted as Living Area:
Yes

Heated: Yes
Finished: Yes
Enclosed: Yes
Contiguous:
Yes
Permitted: Yes
Wet Space: No
Addition: No
Conversion: No

16 Floor 2 - Bath



Dimensions: 10'6" x 6'3"
Area: 59 sq. ft
Counted as Living Area:
Yes

Heated: Yes
Finished: Yes
Enclosed: Yes
Contiguous:
Yes
Permitted: Yes
Wet Space: Yes
Addition: No
Conversion: No

17 Floor 2 - Kitchen



Dimensions: 13'4" x 17'6"
Area: 234 sq. ft
Counted as Living Area:
Yes

Heated: Yes
Finished: Yes
Enclosed: Yes
Contiguous:
Yes
Permitted: Yes
Wet Space: No
Addition: No
Conversion: No

342 Scenic Dr, Albrightsville, Pennsylvania, United States

18 Floor 2 - Living Room



Dimensions: 13'7" x 31'0"
Area: 434 sq. ft
Counted as Living Area:
Yes

Heated: Yes
Finished: Yes
Enclosed: Yes
Contiguous:
Yes
Permitted: Yes
Wet Space: No
Addition: No
Conversion: No

19 Floor 2 - Sunroom



Dimensions: 13'4" x 9'8"
Area: 130 sq. ft
Counted as Living Area:
Yes

Heated: Yes
Finished: Yes
Enclosed: Yes
Contiguous:
Yes
Permitted: Yes
Wet Space: No
Addition: No
Conversion: No

20 Floor 2 - Foyer



Dimensions: 7'2" x 3'8"
Area: 26 sq. ft
Counted as Living Area:
Yes

Heated: Yes
Finished: Yes
Enclosed: Yes
Contiguous:
Yes
Permitted: Yes
Wet Space: No
Addition: No
Conversion: No

342 Scenic Dr, Albrightsville, Pennsylvania, United States

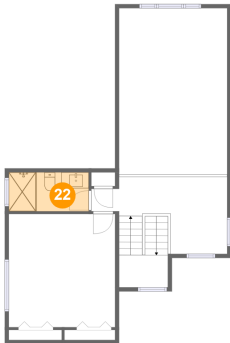
21 Floor 2 - Bedroom



Dimensions: 11'9" x 14'3"
Area: 167 sq. ft
Counted as Living Area:
Yes

Heated: Yes
Finished: Yes
Enclosed: Yes
Contiguous:
Yes
Permitted: Yes
Wet Space: No
Addition: No
Conversion: No

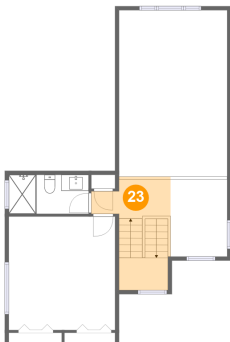
22 Floor 3 - Bath



Dimensions: 10'0" x 4'11"
Area: 49 sq. ft
Counted as Living Area:
Yes

Heated: Yes
Finished: Yes
Enclosed: Yes
Contiguous:
Yes
Permitted: Yes
Wet Space: Yes
Addition: No
Conversion: No

23 Floor 3 - Hall

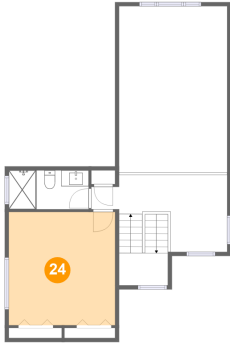


Dimensions: 9'11" x 4'11"
Area: 100 sq. ft
Counted as Living Area:
Yes

Heated: Yes
Finished: Yes
Enclosed: Yes
Contiguous:
Yes
Permitted: Yes
Wet Space: No
Addition: No
Conversion: No

342 Scenic Dr, Albrightsville, Pennsylvania, United States

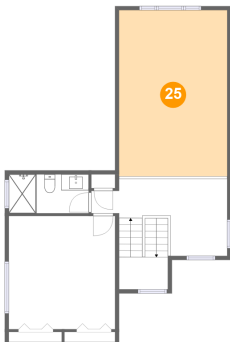
24 Floor 3 - Primary Bedroom



Dimensions: 13'4" x 14'3"
Area: 190 sq. ft
Counted as Living Area:
Yes

Heated: Yes
Finished: Yes
Enclosed: Yes
Contiguous:
Yes
Permitted: Yes
Wet Space: No
Addition: No
Conversion: No

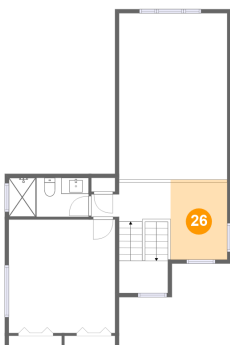
25 Floor 3 - Open To Below



Dimensions: 13'7" x 20'10"
Area: 283 sq. ft
Counted as Living Area: No

Heated: No
Finished: No
Enclosed: No
Contiguous: Yes
Permitted: No
Wet Space: No
Addition: No
Conversion: No

26 Floor 3 - Office



Dimensions: 7'1" x 9'8"
Area: 71 sq. ft
Counted as Living Area:
Yes

Heated: Yes
Finished: Yes
Enclosed: Yes
Contiguous:
Yes
Permitted: Yes
Wet Space: No
Addition: No
Conversion: No