

# Home data report

## 19700 Canada Rd, Gambier, OH, US



**Total Area: 2395 sq. ft**

Below Ground: 0 sq. ft, 1st Floor: 2395 sq. ft

Excluded: Basement 2171 sq. ft, Garage 636 sq. ft, Walls: 256 sq. ft

### Property summary


 **2** Floors

 **3** Bedrooms

 **2** Bathrooms

Home data report

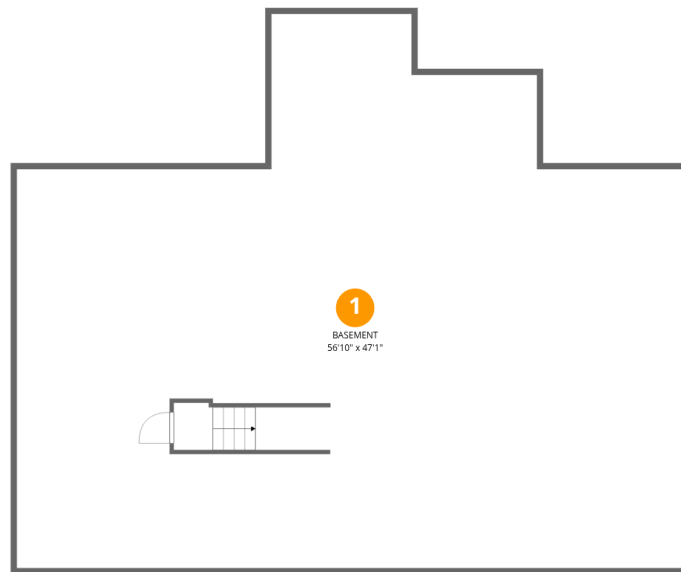
**19700 Canada Rd,Gambier,OH,US**

 **1**  
Half baths

 **1**  
Garages

Home data report

19700 Canada Rd, Gambier, OH, US



## Room dimensions

Floor 1 Below grade

Total: 0sqft

Excluded: 2171sqft

#		Dimensions	sqft	Counted as living area
1	Basement	56'10" x 47'1"	2171 sq. ft	No



## Room dimensions

Floor 2

Total: 2395 sqft Excluded: 636 sqft

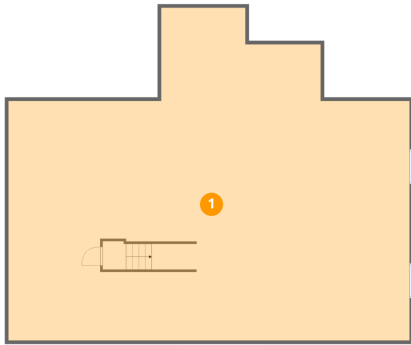
#		Dimensions	sqft	Counted as living area
2	W.I.C.	8'9" x 7'10"	69 sq. ft	Yes
3	Primary Bath	11'10" x 12'5"	131 sq. ft	Yes
4	Laundry	7'10" x 13'8"	96 sq. ft	Yes
5	Family Room	13'7" x 15'6"	210 sq. ft	Yes
6	Office	11'6" x 13'5"	133 sq. ft	Yes
7	Bath	8'3" x 5'5"	44 sq. ft	Yes
8	Bath	6'10" x 3'3"	22 sq. ft	Yes
9	Bedroom	12'3" x 11'10"	145 sq. ft	Yes
10	Dining Area	11'8" x 8'8"	101 sq. ft	Yes
11	Hall	3'8" x 6'7"	24 sq. ft	Yes
12	Primary Bedroom	14'0" x 14'11"	209 sq. ft	Yes

Home data report

19700 Canada Rd,Gambier,OH,US

#		Dimensions	sqft	Counted as living area
13	Foyer	10'6" x 14'0"	139 sq. ft	Yes
14	Hall	10'2" x 6'1"	62 sq. ft	Yes
15	Living Room	19'7" x 21'9"	426 sq. ft	Yes
16	Pantry	6'6" x 4'11"	32 sq. ft	Yes
17	Bedroom	12'3" x 10'5"	128 sq. ft	Yes
18	Hall	15'8" x 5'9"	67 sq. ft	Yes
19	W.I.C.	5'5" x 4'11"	26 sq. ft	Yes
20	Garage	26'4" x 24'2"	636 sq. ft	No
21	Kitchen	11'8" x 16'7"	191 sq. ft	Yes

## 1 Floor 1 - Basement



Dimensions: 56'10" x 47'1"  
Area: 2171 sq. ft  
Counted as living area: No

Heated: Yes  
Finished: No  
Enclosed: Yes  
Contiguous: Yes  
Permitted: Yes  
Wet space: No  
Addition: No  
Conversion: No

## 2 Floor 2 - W.I.C.



Dimensions: 8'9" x 7'10"  
Area: 69 sq. ft  
Counted as living area: Yes

Heated: Yes  
Finished: Yes  
Enclosed: Yes  
Contiguous: Yes  
Permitted: Yes  
Wet space: No  
Addition: No  
Conversion: No

### 3 Floor 2 - Primary Bath



Dimensions: 11'10" x 12'5"  
Area: 131 sq. ft  
Counted as living area: Yes

Heated: Yes  
Finished: Yes  
Enclosed: Yes  
Contiguous: Yes  
Permitted: Yes  
Wet space: Yes  
Addition: No  
Conversion: No

### 4 Floor 2 - Laundry



Dimensions: 7'10" x 13'8"  
Area: 96 sq. ft  
Counted as living area: Yes

Heated: Yes  
Finished: Yes  
Enclosed: Yes  
Contiguous: Yes  
Permitted: Yes  
Wet space: No  
Addition: No  
Conversion: No

### 5 Floor 2 - Family Room



Dimensions: 13'7" x 15'6"  
Area: 210 sq. ft  
Counted as living area: Yes

Heated: Yes  
Finished: Yes  
Enclosed: Yes  
Contiguous: Yes  
Permitted: Yes  
Wet space: No  
Addition: No  
Conversion: No

**6** Floor 2 - Office

---



Dimensions: 11'6" x 13'5"  
Area: 133 sq. ft  
Counted as living area: Yes

Heated: Yes  
Finished: Yes  
Enclosed: Yes  
Contiguous: Yes  
Permitted: Yes  
Wet space: No  
Addition: No  
Conversion: No

**7** Floor 2 - Bath

---



Dimensions: 8'3" x 5'5"  
Area: 44 sq. ft  
Counted as living area: Yes

Heated: Yes  
Finished: Yes  
Enclosed: Yes  
Contiguous: Yes  
Permitted: Yes  
Wet space: Yes  
Addition: No  
Conversion: No

**8** Floor 2 - Bath

---



Dimensions: 6'10" x 3'3"  
Area: 22 sq. ft  
Counted as living area: Yes

Heated: Yes  
Finished: Yes  
Enclosed: Yes  
Contiguous: Yes  
Permitted: Yes  
Wet space: Yes  
Addition: No  
Conversion: No

## 9 Floor 2 - Bedroom



Dimensions: 12'3" x 11'10"  
Area: 145 sq. ft  
Counted as living area: Yes

Heated: Yes  
Finished: Yes  
Enclosed: Yes  
Contiguous: Yes  
Permitted: Yes  
Wet space: No  
Addition: No  
Conversion: No

## 10 Floor 2 - Dining Area



Dimensions: 11'8" x 8'8"  
Area: 101 sq. ft  
Counted as living area: Yes

Heated: Yes  
Finished: Yes  
Enclosed: Yes  
Contiguous: Yes  
Permitted: Yes  
Wet space: No  
Addition: No  
Conversion: No

## 11 Floor 2 - Hall



Dimensions: 3'8" x 6'7"  
Area: 24 sq. ft  
Counted as living area: Yes

Heated: Yes  
Finished: Yes  
Enclosed: Yes  
Contiguous: Yes  
Permitted: Yes  
Wet space: No  
Addition: No  
Conversion: No

## 12 Floor 2 - Primary Bedroom



Dimensions: 14'0" x 14'11"  
Area: 209 sq. ft  
Counted as living area: Yes

Heated: Yes  
Finished: Yes  
Enclosed: Yes  
Contiguous: Yes  
Permitted: Yes  
Wet space: No  
Addition: No  
Conversion: No

## 13 Floor 2 - Foyer



Dimensions: 10'6" x 14'0"  
Area: 139 sq. ft  
Counted as living area: Yes

Heated: Yes  
Finished: Yes  
Enclosed: Yes  
Contiguous: Yes  
Permitted: Yes  
Wet space: No  
Addition: No  
Conversion: No

## 14 Floor 2 - Hall



Dimensions: 10'2" x 6'1"  
Area: 62 sq. ft  
Counted as living area: Yes

Heated: Yes  
Finished: Yes  
Enclosed: Yes  
Contiguous: Yes  
Permitted: Yes  
Wet space: No  
Addition: No  
Conversion: No

## 15 Floor 2 - Living Room



Dimensions: 19'7" x 21'9"  
Area: 426 sq. ft  
Counted as living area: Yes

Heated: Yes  
Finished: Yes  
Enclosed: Yes  
Contiguous: Yes  
Permitted: Yes  
Wet space: No  
Addition: No  
Conversion: No

## 16 Floor 2 - Pantry



Dimensions: 6'6" x 4'11"  
Area: 32 sq. ft  
Counted as living area: Yes

Heated: Yes  
Finished: Yes  
Enclosed: Yes  
Contiguous: Yes  
Permitted: Yes  
Wet space: No  
Addition: No  
Conversion: No

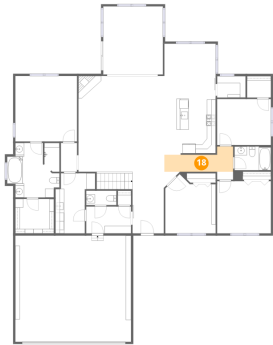
## 17 Floor 2 - Bedroom



Dimensions: 12'3" x 10'5"  
Area: 128 sq. ft  
Counted as living area: Yes

Heated: Yes  
Finished: Yes  
Enclosed: Yes  
Contiguous: Yes  
Permitted: Yes  
Wet space: No  
Addition: No  
Conversion: No

**18** Floor 2 - Hall



Dimensions: 15'8" x 5'9"  
Area: 67 sq. ft  
Counted as living area: Yes

Heated: Yes  
Finished: Yes  
Enclosed: Yes  
Contiguous: Yes  
Permitted: Yes  
Wet space: No  
Addition: No  
Conversion: No

**19** Floor 2 - W.I.C.



Dimensions: 5'5" x 4'11"  
Area: 26 sq. ft  
Counted as living area: Yes

Heated: Yes  
Finished: Yes  
Enclosed: Yes  
Contiguous: Yes  
Permitted: Yes  
Wet space: No  
Addition: No  
Conversion: No

**20** Floor 2 - Garage



Dimensions: 26'4" x 24'2"  
Area: 636 sq. ft  
Counted as living area: No

Heated: No  
Finished: No  
Enclosed: Yes  
Contiguous: Yes  
Permitted: Yes  
Wet space: No  
Addition: No  
Conversion: No

**21** Floor 2 - Kitchen

---



**Dimensions:** 11'8" x 16'7"

**Area:** 191 sq. ft

**Counted as living area:** Yes

**Heated:** Yes

**Finished:** Yes

**Enclosed:** Yes

**Contiguous:** Yes

**Permitted:** Yes

**Wet space:** No

**Addition:** No

**Conversion:** No